

Conservationist® **MAXIMUM ENERGY EFFICIENCY**

INTELLIGENT CONTROL LOGIC

- The internal microprocessor provides enhanced operating parameters and tighter differentials for precise sensing and faster heating response to optimize performance.

SELF-POWERED ELECTRONIC GAS VALVE

- Uses a thermopile to generate the power needed to operate the electronic gas control without requiring an external power source.

DIAGNOSTICS

- The electronic gas control incorporates an LED status indicator that monitors system operation & service diagnostics.

HIGHEST ENERGY FACTORS

- 2 Inch thick "Environmentally-Friendly" Non-CFC foam insulation, external heat traps and specially designed combustion chamber combine to produce a High Energy Factor for maximum savings on operating costs.

BLUE DIAMOND® GLASS COATING

- An A. O. Smith Water Products Company exclusive provides superior corrosion resistance compared to industry-standard glass lining.

A. O. SMITH DYNACLEAN™ II AUTOMATIC SEDIMENT-CLEANING SYSTEM

- Specially designed dip tube directs incoming cold water to create turbulence in the tank, which reduces lime and sediment buildup. DynaClean II helps prolong tank life, maintains high energy efficiency and maximizes hot water output. Made from long-lasting PEX cross-linked polymer.

COREGARD™ ANODE ROD

- A. O. Smith's exclusive magnesium anode with stainless steel core protects tank against corrosion.

GREEN CHOICE® GAS BURNER

- Patented "Eco-Friendly" design reduces NOx emissions by up to 33% and complies with requirements for low NOx emissions.

PUSH-BUTTON PIEZO IGNITOR

- Makes lighting pilot fast and easy with one-hand push-button spark ignition.

DURABLE, TAMPER-RESISTANT BRASS DRAIN VALVE

FACTORY-INSTALLED, CSA CERTIFIED & ASME RATED T&P RELIEF VALVE

- Top-mounted T&P valve available as option.

CODE COMPLIANCE

- Meets UBC, CEC, SBCC, HUD and BOCA National Codes. Meets the thermal efficiency and standby loss requirements of the U.S. Department of Energy and current edition of ASHRAE/IESNA 90.1 and meets the Federal Energy Efficiency Standards effective January 20, 2004, according to the National Appliance Energy Conservation Act (NAECA) of 1992.

DESIGN-CERTIFIED BY CSA INTERNATIONAL

- According to ANSI Z21.10.1 - CSA 4.1 standards governing storage-type water heaters.

FLAMMABLE VAPOR IGNITION RESISTANT COMPLIANT DESIGN

- See other side.

10-YEAR LIMITED TANK AND PARTS WARRANTY

- For complete information, consult written warranty or A. O. Smith Water Products Company.



SERIES 300/301



Conservationist[®] MAXIMUM ENERGY-EFFICIENCY SERIES 300/301

MODEL NUMBER	FIRST HOUR RATING GALLONS	ENERGY FACTOR	GALLON CAPACITY	BTU INPUT PER HOUR NATURAL †	RECOVERY 90°F RISE GALLONS PER HOUR	FOAM THICKNESS (INCHES)	DIMENSIONS IN INCHES							APPROX. SHIPPING WEIGHT (LBS)
							A	B	C	D	E	F	DRAFT HOOD OUTLET	
TALL MODELS														
XGV-40	70	.63	40	40,000	41	2	61-3/4	58-1/4	20	13	8	51-3/4	3 or 4	150
XGV-50	88	.62	50	40,000	41	2	61	57-1/4	22	13	8	50-1/4	3 or 4	165

Recovery capacity based on actual performance tests.

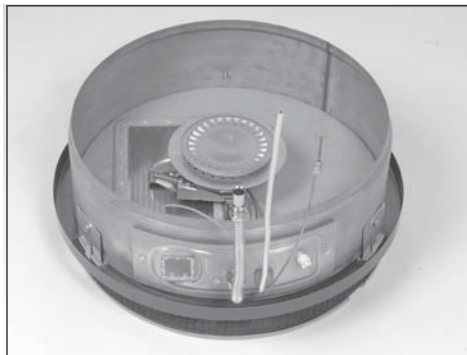
Water Connections – 3/4" male on all models.

† Propane gas – 36,000 BTU input on the 40 gallon model and 37,000 BTU input on the 50-gallon model.

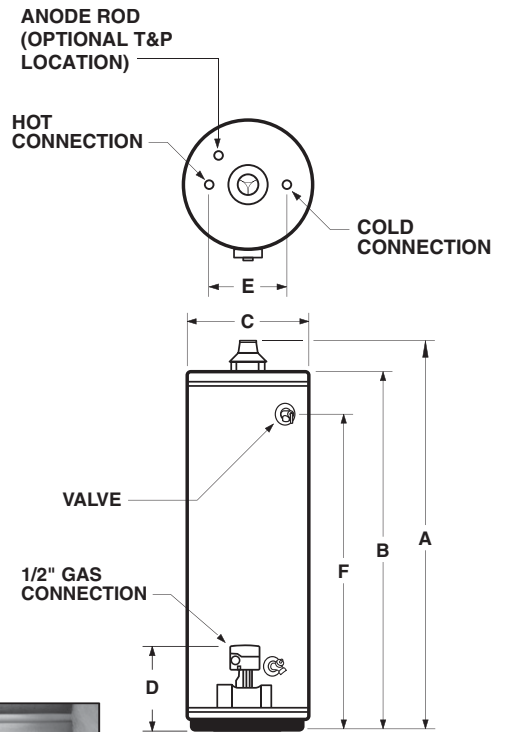
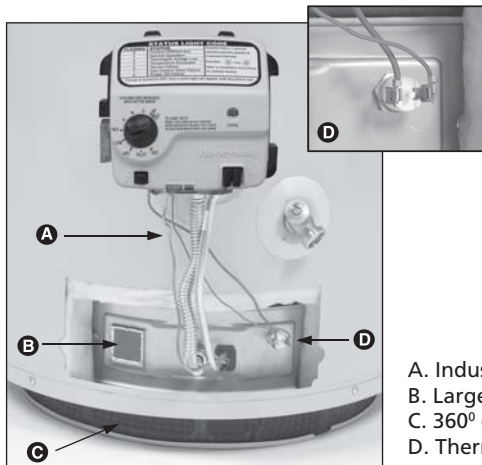
Flammable Vapor Ignition Resistant (FVIR) Water Heaters

A. O. Smith FVIR design meets the American National Standards Institute standards (ANSI Z21.10.1 - CSA 4.1) that deal with the accidental or unintended ignition of flammable vapors, such as those emitted by gasoline.

Feature a sealed combustion chamber with air intake filter and a flame arrestor built into the water heater base. In addition, a thermal cutoff (TCO) device, is designed to shut off gas flow to the burner and pilot if poor combustion is detected.



If flammable vapors accidentally enter the combustion chamber, the arrestor is designed so flames burn off the top surface and can not escape down through the arrestor.



Maximum Hydrostatic Working Pressure: 150 PSI.

- A. Industry standard thermopile
- B. Large View Port for easy burner inspection
- C. 360° combustion air filter
- D. Thermal Cutoff (TCO) with manual reset