

# Product Instructions

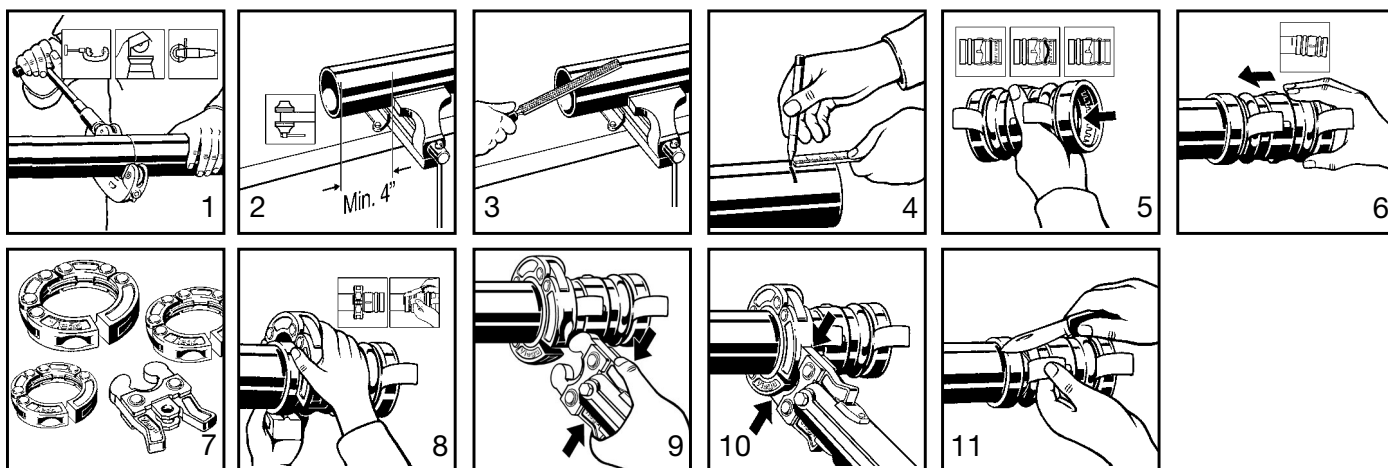
**viega**

## Viega ProPress XL

### Copper Fittings for Types K, L and M Hard Copper Tubing in 2-1/2" to 4"

#### **⚠ WARNING**

Read, understand and follow all instructions for installing ProPress XL fittings. Failure to follow all instructions may result in extensive property damage, serious injury or death.



ProPress XL Insertion Depth Chart

Tube Size	2-1/2"	3"	4"
Insertion Depth	2-1/8"	2-1/8"	2-1/2"

Note: All ProPress XL fittings to be installed with UL listed Ridge Tool Class II Pressing Tool.

1. Cut copper tubing at right angles using displacement type cutter or fine-toothed steel saw.
2. Keep end of tubing a minimum of 4" away from the contact area of the vise to prevent possible damage to the tubing in the press area.
3. Remove burr from inside and outside of tubing to prevent cutting sealing element.
4. Mark proper insertion depth as indicated by the ProPress XL insertion depth chart. Improper insertion depth may result in an improper seal.
5. Check seal and grip ring for correct fit.
6. While turning slightly, slide press fitting onto tubing to the marked depth. Do not use oils or lubricants.
7. ProPress XL fitting connections must be performed with ProPress XL Rings and Actuator. Use of other ring set or actuator will result in an improper connection. See Ridgid Operator's Manual for proper tool instructions.
8. Open XL Ring and place at right angle on the fitting. XL Ring must be engaged on the fitting bead. Check insertion depth.
9. With Actuator inserted into the tool, open the Actuator as shown.
10. Place Actuator onto XL Ring and start pressing process. Hold the trigger until the Actuator has engaged the XL Ring. Keep extremities and foreign objects away from XL Ring and Actuator during pressing operation to prevent injury or incomplete press.
11. Release Actuator from XL Ring and then remove the XL Ring from the fitting on completion of press. Remove tag from fitting indicating press has been performed.
12. For applications requiring ProPress XL with FKM sealing elements, remove the factory installed EPDM sealing element and replace with FKM sealing element.



**Pressure Testing:** Pressure testing is to be carried out in accordance with local codes. ProPress XL also includes the Smart Connect Feature providing quick and easy identification of unpressed connections during the pressure testing process. Unpressed connections are located by pressurizing the system with air or water. When testing with air the pressure range is 1/2 PSI to 85 PSI Maximum. When testing with water the pressure range is 15 PSI to 85 PSI Maximum. The Smart Connect Feature is an integral part of the design of the fitting assuring leakage of liquids and/or gases from inside the system past the sealing element of an unpressed connection. The Smart Connect Feature is removed during the pressing process creating a leak-proof, permanent connection.

**Viega... The global leader in plumbing, heating and pipe joining systems**

301 N. Main, 9th Floor • Wichita, KS 67202 • Ph: 800-976-9819 • Fax: 316-425-7618 • [www.viega.com](http://www.viega.com)

©2011, ProPress®, FostaPEX®, Seapress®, MegaPress®, MegaPressG® and Viega® are registered trademarks of Viega GmbH & Co. PureFlow®, Smart Connect®, Climate Panel®, Climate Mat®, Climate Trak®, MANABLOC®, Radiant Wizard®, S-no-Ice®, Snap Panel®, XL® and XL-C® are registered trademarks of Viega LLC. MiniBloc™, ProRadiant™, PolyAlloy™, SmartLoop™ and Zero Lead™ are trademarks of Viega LLC; GeoFusion™, ProPressG™ and ViegaPEX™ are trademarks of Viega GmbH & Co. KG.