



Submittal Data Information

101-140

Zone Sentry® Ball Valve Zone Valve

Effective: January 25, 2011

Supersedes: October 20, 2010

Job: _____ Engineer: _____ Contractor: _____ Rep: _____

ITEM NO.	MODEL NO.	

Product Specifications

Max. Operating Pressure...300 PSI (2100 kPa)
 Max. Shutoff Pressure 125 PSI (875 kPa)
 Fluid Temperature Range...20-240°F (7°-115°C)
 Service.....Water or
 Water/Glycol up
 to 50% Glycol
 Close Systems
 (Open System —
 Option Available)
 Ball Rotation Speed.....(90° turn),
 Approximately
 (after charge time)
 Electrical Rating.....24 VAC, 60Hz
 0.48 Amps
 Power Consumption.....11.4 W, 0.48 Amps
 (Charging)
 Power Consumption.....1.44W, 0.06 Amps
 (Power On)
 Heat Anticipator Setting...0.5 Amps
 End Switch Rating.....1 Amp @ 24 VAC

Materials of Construction, Actuator:

Body High Performance Engineered Polymer
 Gears High Performance Internally Lubricated
 Engineered Polymer

Materials of Construction, Valve:

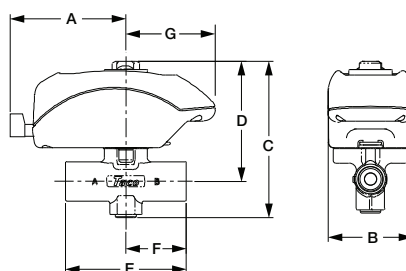
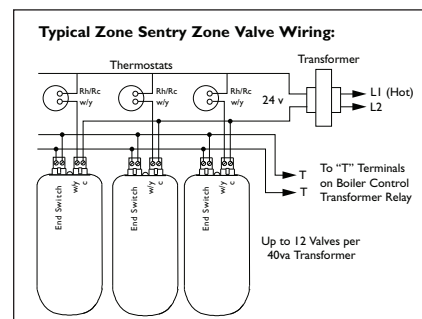
BodyForged Brass
 StemBrass
 Press Ring.....Brass
 BallBrass (Chrome Plated)
 SeatModified Teflon®
 O-RingsEPDM

Application:

Taco Zone Sentry® Zone Valves provide on-off, normally open or normally closed control in both open and closed hydronic systems. The valves can be used in a wide variety of heating and non condensing cooling applications, primarily designed for use with baseboard, fan coils, radiators, convectors, air handlers, heat pumps and radiant applications.

Ease of Installation / Operation:

The Taco Zone Sentry® is the most technologically advanced zone valve ever made. It's also simple to install and operate. The valve can be installed in any direction, in any orientation. We then went a step further, allowing the operator to be mounted to the valve body in either direction, great for those tight baseboard jobs. Snap-in quick connects on the back of the valve make for a simple, secure and fast wiring hook-up. A green LED light shows full functionality of the valve's operation and thermostat status. Under a no power situation the manual override button located on the top of the valve allows the ball to be rotated up to 90° and is also marked with a slot to indicate the position of the valve.



Valve Size	Cv (Kv) / Ft. of Pipe Equiv.**	Close-Off Pressure (kPa)
1/2"	4.9 (4.3) / 9.5	0-125 psi (0-862 kPa)
3/4"	10.3 (8.9) / 8.4	0-125 psi (0-862 kPa)
1"	8.9 (7.7) / 47.4	0-125 psi (0-862 kPa)

**At 4' per second
 (Maximum recommended residential flow rate).

Zone Sentry® Dimensions: (FOR REFERENCE PURPOSES)

Valve Size	A		B		C		D		E (Sweat)		E (Threaded)		F		G		Weight (Valve + Actuator)	
	in.	mm	in.	mm	in.	mm	in.	mm	in.	mm	in.	mm	in.	mm	in.	mm	Lbs.	Kg
1/2"	3"	76.2	2.375"	60.3	4.125"	104.7	2.06"	52.3	3.125"	79.3	4.750"	120.6	1.562"	39.7	2.312"	58.7	0.85	0.385
3/4"	3"	76.2	2.375"	60.3	4.125"	104.7	2.12"	53.8	3.125"	79.3	3.312"	84.1	1.562"	39.7	2.312"	58.7	0.90	0.408
1"	3"	76.2	2.375"	60.3	4.125"	104.7	2.12"	53.8	3.875"	98.4	3.875"	98.4	1.875"	47.6	2.312"	58.7	1.10	0.498

Do it Once. Do it Right.®

TACO INC., 1160 Cranston Street, Cranston, RI 02920 Telephone: (401) 942-8000 Fax: 942-2360
TACO (Canada), Ltd., 6180 Ordan Drive, Mississauga, Ontario L5T 2B3 Telephone: (905) 564-9422 Fax: (905) 564-9436
 Visit our website at: www.taco-hvac.com

Printed in USA
 Copyright 2011
 TACO, Inc.