



Potable Water Zone Sentry® Zone Valve

≤.25% Lead

The Taco Zone Sentry® Zone Valve enhances the overall performance of any zone valve system. The unique patented technology in the Zone Sentry® utilizes microcircuit based logic to control a gear driven electronic actuator which drives a ball valve based body design. All this adds up to a zone valve that leads the industry in energy efficiency, flow capacity (C_v), shutoff pressure rating, ease of installation, diagnostic capability and the number of valves (12) that can be use on a standard 40VA transformer.



Submittal Data Information Potable Water Zone Sentry® Ball Valve Zone Valve

Submittal Data # 101-160

Effective: 07/01/13

Supersedes: New

Product Specifications

Max. Operating Pressure	300 PSI (2100 kPa)
Max. Shutoff Pressure	125 PSI (875 kPa)
Fluid Temperature Range	33-240°F (6°-115°C)
Service.....	Potable Water
Ball Rotation Speed.....	(90° turn), Approximately 5 seconds (After charge time)
Electrical Rating.....	24 VAC, 60Hz 0.48 Amps
Power Consumption... (Charging)	11.4 W, 0.48 Amps
Power Consumption... (Power On)	1.44W, 0.06 Amps
End Switch Rating	1 Amp @ 24 VAC

Materials of Construction, Actuator:

Body.....	High Performance Engineered Polymer
Gears ...	High Performance Internally Lubricated Engineered Polymer

Materials of Construction, Valve:

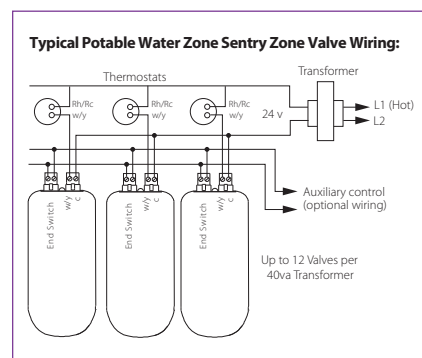
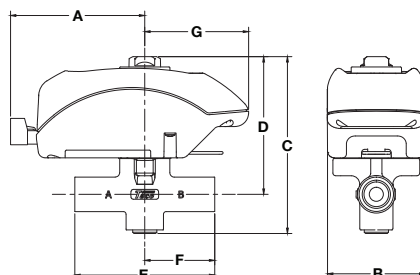
Body.....	Forged Brass
Stem	Brass
Press Ring	Brass
Ball	Brass (Chrome Plated)
Seat	Modified Teflon®
O-Rings	Viton

Application:

The Taco Potable Water Zone Sentry valve is available in a 2-way sweat configuration with either a normally open or normally closed actuator. Some typical installations would include a combination domestic water and hydronic heating system, culinary installation or water shut off to a potable system.

Ease of Installation / Operation:

The Taco Potable Water Zone Sentry is the most technologically advanced zone valve ever made. It's also simple to install and operate. The valve can be installed in any direction, in any orientation. We then went a step further, allowing the operator to be mounted to the 2-way valve body in either direction. Snap-in quick connects on the back of the valve make for a simple, secure and fast wiring hook-up. A green LED light shows full functionality of the valve's operation. Under a no power situation the manual override button located on the top of the valve allows the ball to be rotated up to 90° and is also marked with a slot to indicate the position of the valve.



Valve Size	Cv (Kv) / Ft. of Pipe Equiv. **	Close-Off Pressure (kPa)
1/2"	4.9 (4.3) / 9.5	0-125 psi (0-862 kPa)
3/4"	10.3 (8.9) / 8.4	0-125 psi (0-862 kPa)

**At 4' per second (Max. recommended residential flow rate).

Potable Water Zone Sentry® Dimensions: (FOR REFERENCE PURPOSES)

Part Number	Valve Size	Valve Type	A		B		C		D		E		F		G	
			in.	mm	in.	mm	in.	mm	in.	mm	in.	mm	in.	mm	in.	mm
V050C2D2ZA024Q4A1 (Normally Closed)	1/2"	2-way Sweat	3"	76.2	2.375"	60.3	4.125"	104.7	3.06"	77.72	3.125"	79.3	1.562"	39.7	2.312"	58.7
V075C2D2ZA024Q4A1 (Normally Closed)	3/4"	2-way Sweat	3"	76.2	2.375"	60.3	4.125"	104.7	3.12"	79.25	3.125"	79.3	1.562"	39.7	2.312"	58.7
V050C2D2ZB024Q4A1 (Normally Open)	1/2"	2-way Sweat	3"	76.2	2.375"	60.3	4.125"	104.7	3.06"	77.72	3.125"	79.3	1.562"	39.7	2.312"	58.7
V075C2D2ZB024Q4A1 (Normally Open)	3/4"	2-way Sweat	3"	76.2	2.375"	60.3	4.125"	104.7	3.12"	79.25	3.125"	79.3	1.562"	39.7	2.312"	58.7



Taco Inc., 1160 Cranston Street, Cranston, RI 02920 / (401) 942-8000 / Fax (401) 942-2360
Taco (Canada) Ltd., 8450 Lawson Road, Unit #3, Milton, Ontario L9T 0J8 / (905) 564-9422 / Fax (905) 564-9436
www.taco-hvac.com