

PowerPEX[®]

Complete PEX Solutions

ASTM F1807
Crimp[™]



ASTM F2080
Lock[™]



ASTM F1960
Grip[™]



Complete

Sioux Chief offers all PEX systems and connections: ASTM F1807 Crimp[™], ASTM F2080 Lock[™] & ASTM F1960 Grip[™]. The industry's most robust offering from valved terminations in Access Boxes, to water heater connectors, to copper assemblies, kits or manifolds. Grip fittings can be used with PEX-A tubing only

Warranted

25-year warranty on tube and fittings without limitation. The tube is warranted. The fittings are warranted. Connection types may be matched or mixed (hybrid systems) without a change in warranty

Proudly Made in America

Domestic materials. Domestic manufacture. **Made in America** using the best materials possible with the best people possible

Quality

Unmatched material quality. State-of-the-art equipment to assure lifelong plumbing systems



Supply

Drainage

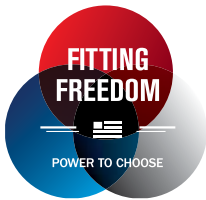
Support

www.siouxchief.com

TAKE THE FIELD.



PowerPEX®



Sioux Chief offers all major PEX systems. Sioux Chief's PEX offering is the most complete in the plumbing industry. All fitting and tubing solutions carry a 25-year warranty, mixed or matched. Sioux Chief does not limit its warranty on tube or fittings based on matching system connections. This is unique.

PowerPEX is warranted across all three of Sioux Chief's PEX system connection offerings, giving contractors the ability to choose the right tube or fitting connection for each application, layout or contractor comfort level. We call this **Fitting Freedom™**.

Sioux Chief believes intelligent systems may incorporate hybrid PEX offerings to maximize each connection system's benefit. This **Power to Choose™** puts the plumber back at the heart of smart plumbing.

| | | | |
|--|---|--|--|
| | <p>ASTM F1807 CRIMP</p>  <ul style="list-style-type: none"> Complete: copper and brass fittings, copper assemblies, tools, kits & manifolds Made In America Universal: can be used with all F876/877 PEX tubing Approved / Listed / Certified Economical: least expensive PEX system EcoBrass®, No Lead, fitting solutions | | <p>ASTM F2159 ACCUCRIMP</p> <ul style="list-style-type: none"> Accurate: positioning fingers perfectly align crimp ring / sleeve over sealing barbs of fitting Engineered: polymer material offered in white to show any harmful chemical exposure or UV degradation North American manufacture |
| | <p>CRIMP RING</p> <ul style="list-style-type: none"> Made in America Pure copper No burrs, perfect temper Tenured economical solution | | <p>ASTM F877 V-SLEEVE</p> <ul style="list-style-type: none"> Patented press solution: #8,123,257 Fully inserted tube is fully visible Locates itself over barbs Retains itself & doesn't slip Made in America |

| | |
|--|---|
| | <p>ASTM F1960 GRIP</p>  <ul style="list-style-type: none"> Complete: fittings, preformed copper, tools, kits & manifolds Full flow fittings Made in America EcoBrass®, No Lead, fitting solutions Approved / Listed / Certified |
|--|---|

| | |
|--|--|
| | <p>ASTM F2080 LOCK</p>  <ul style="list-style-type: none"> Leak Proof: highest axial compression and tube interference on sealing barbs of all PEX systems Complete: fittings, preformed copper, tools, kits & manifolds 100% visibly complete and assured seal with each connection Full flow fittings: the largest flow of any PEX fitting solution EcoBrass®, No Lead, fitting solutions Approved / Listed / Certified |
|--|--|



PowerPEX: PUTTING THE PLUMBER BACK AT THE HEART OF SMART PLUMBING.



PowerPEX Tubing

PEX-B utilizes the silane graft method of production which combines a catalyst with PE resin and through heated extrusion, provides a cross-linkable tubing. Cross-linking is then performed in a secondary and highly controlled curing process.

- Straight lengths and coils
- Barrier or standard tubing
- Red, white or blue
- ½" – 2" CTS

Offering

PowerPEX is available in copper tube sizes (CTS) ½" through 2". Coils are available up to 1". Straight lengths are available for every size. ½" – 1" available in red, white or blue. 1¼" – 2" available in white only.

Radiant/oxygen barrier tubing is available through 1" in straight lengths and coils in red color only.



PowerPEX[®] ASTM F1807

CRIMP[™]

ASTM F1807 Crimp[™] is the oldest and most popular PEX connection system. Since 1996 it has provided hundreds of millions of leak-free, permanent joints. From residential to commercial installations, F1807 connections have provided an easy and reliable plumbing connection and have stood the test of time.



F1807 IS THE PLUMBING INDUSTRY'S MOST POPULAR CHOICE. IT'S SIMPLE TO INSTALL, RELIABLE & ECONOMICAL.

Complete

- ASTM F1807 Crimp has an unmatched offering that covers everything from tools to kits
- Copper connectors and assemblies complement the F1807 offering, adding efficiencies by reducing joints, labor and potential for leaks

Made in America

Everything: rings, preformed copper assemblies, fittings, accessories & tube. No other manufacturer can claim that. Everything made with domestic materials in American factories.

Economical

- The lowest cost plumbing system
- Over 50% material savings when compared to other PEX system types



SYSTEM OFFERING

F1807 Crimp is a complete offering.

- Manifolds
- Stub out ells
- Tub valve connectors
- Water heater connectors
- Access boxes
- Valves
- Fittings
- Arresters
- Copper crimp rings
- SS compression sleeves
- Kits
- Tools
- Bracketing solutions

Preformed Copper

Water Heater Connectors

Valves

Fittings

Rings & Sleeves

Manifolds

Kits



**SHIUX CHIEF'S F1807
BREADTH OF OFFERING
AND PRECISION-MADE
COMPONENTS CAN
BECOME YOUR
"PLUMBING SIGNATURE".**

PowerPEX[®] ASTM F2080 LOCK[™]

ASTM F2080 Lock[™] gives the contractor peace of mind to choose a premium connection for the applications that demand strength, or for the jobs that just can't afford to fail. F2080 provides an assured connection that WILL NOT leak. From service to stub out...Sioux Chief F2080 Lock fittings provide the best solution for robust and reliable plumbing. ASTM F2080 Lock solutions provide an engineer, contractor, builder or homeowner their 'calling card' of quality. Bid quality. Bid F2080 Lock.



**NO
LEAD**



**MADE IN
USA**



**SIOUX CHIEF
QUALITY**



**COMPLETE
OFFERING**



**CERTIFIED
WARRANTY**



**TESTED &
APPROVED**



**SIMPLY THE STRONGEST
PEX CONNECTION AVAILABLE
TODAY. PERIOD.**

“BulletProof” & “LeakProof”

“Other PEX systems do not compare to the assured connection that F2080 Lock fittings provide. It's bulletproof. When plumbing commercial, multifamily or high-end residential, there is no choice...F2080 is it. Sioux Chief's Lock fittings allow me to sleep easy at night because I know the fitting is leak-proof.”

Quality

- Highest axial compression of any PEX connection. Most interference between tube and fitting = best PEX connection possible
- Largest flow diameter of any PEX connection, providing the best flow characteristics of any PEX connection system type
- Made in America
- When ring is pulled into position, fitting is visibly assured to be leak-free

Complete

1/2" – 2" fittings, tubing, connectors, assemblies, kits and access boxes for residential, commercial or industrial plumbing. From **Service to Stub Out**... F2080 Lock has you covered.



SYSTEM OFFERING

F2080 Lock is a complete offering. How much does a claim or callback cost? Lock systems offer the most assured PEX connection.

How much is your reputation worth? F2080 systems can help protect it.

- Manifolds
- Stub out ells
- Tub valve connectors
- Water heater connectors
- Access boxes
- Valves
- Fittings
- Arresters
- Brass sleeves
- Kits
- Tools
- Bracketing solutions



F2080 IS
UNPARALLELED IN
CONNECTION STRENGTH,
ERROR-FREE
INSTALLATIONS &
FLOW. A TRULY
“BULLETPROOF” SYSTEM.

PowerPEX[®] **ASTM F1960** PEX-A **GRIP[™]**

ASTM F1960 Grip[™] fittings are made from No Lead, dezincification resistant and stress corrosion cracking resistant brass. Preformed copper assemblies and kits complement the full range of fitting options available as PowerPEX Grip. F1960 fittings can only be used with PEX-A tubing. Each fitting provides a large I.D. for better flow characteristics. The expansion sleeve and tubing system provides a “can’t miss” visible connection.



**F1960 OFFERS
FULL FLOW &
A VISIBLE
CONNECTION.**

Full Flow

A larger I.D. provides quicker water delivery.

Made in America

Fitting solutions, preformed copper, assemblies, rings, etc. are proudly made in the USA from the best domestic materials available.

Complete

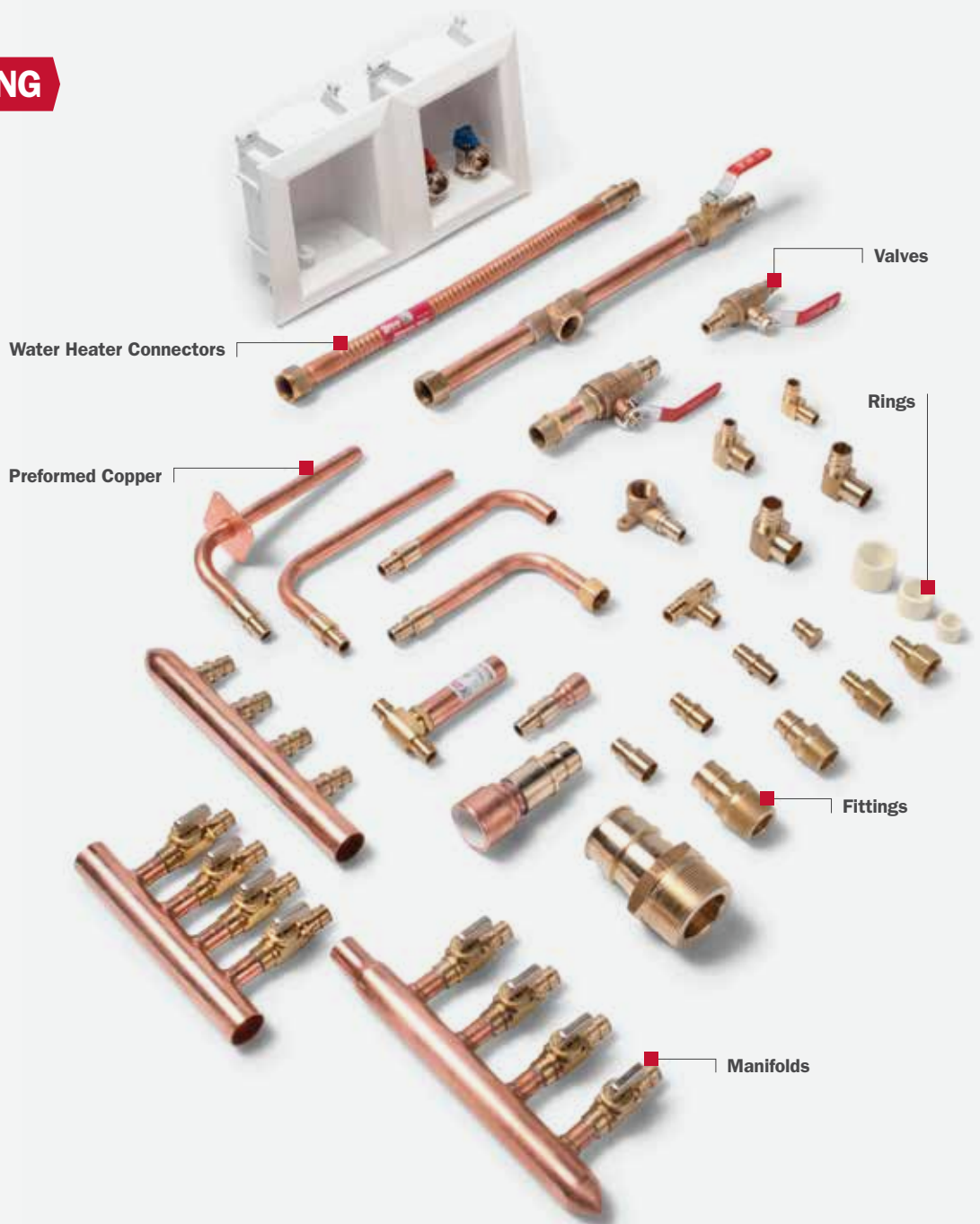
- From service to stub out, Sioux Chief provides every solution and application-fitting to complete the system offering
- The **Power to Choose** the right product for the application



SYSTEM OFFERING

F1960 Grip is a complete offering.

- Manifolds
- Stub out ells
- Tub valve connectors
- Water heater connectors
- Access boxes
- Valves
- Fittings
- Arresters
- PEX expansion ring
- Kits
- Tools
- Bracketing solutions



**F1960 IS RELIABLE
AND VERSATILE.**



PowerPEX[®] ASTM F877

TUBE

A full size range of quality PEX-B tubing allows Sioux Chief to complement their already extensive line of PEX solutions. From residential to commercial plumbing, fire-suppression, geothermal and radiant heating, PowerPEX tubing provides the perfect quality and economical solution.



EVERY INCH IS CHECKED FOR QUALITY USING THE BEST EQUIPMENT AVAILABLE FOR PEX TUBE EXTRUSION.

Quality

Sioux Chief offers both standard potable tubing and oxygen barrier tubing. PowerPEX PEX-B tubing is made using the industry's latest methods and equipment.

Advantage

Sioux Chief has capitalized on all the extrusion advances that have been made in recent years. Our quality is unequalled. The addition of tube is a HUGE complement to the already robust offering of PEX system solutions available from Sioux Chief. We have made it even easier to order from Sioux Chief with the assurance that as your source, we are complete, of the highest quality and 100% American Made.

Made in America

With over 50% of PEX tubing and fittings coming from overseas...Sioux Chief believes a better proposition is to **Buy American and Buy Quality**. Keep the jobs in America! Buy Sioux Chief PowerPEX.



| Available in these colors: | Red | White | Blue | Red | White | Blue | Red | White | Blue | Red | White | Blue | Red | White | | |
|-----------------------------|------|-------|------|--------|--------|------|------|-------|------|------|-------|------|------|-------|----|------|
| Available in these sizes: | 1/2" | 3/4" | 1" | 1 1/4" | 1 1/2" | 2" | 1/2" | 3/4" | 1" | 1/2" | 3/4" | 1" | 1/2" | 3/4" | 1" | 1/2" |
| Available in PEX-B: | X | X | X | X | X* | X* | X | X | X | X | X | X | X | X | X | X |
| Available in Barrier PEX-B: | X | X | X | | | | X | X | X | X | X | X | X | X | X | X |
| Number of coils/pallet: | | | | | | | 25 | 18 | 12 | 14 | 9 | 7 | 12 | 9 | 6 | 7 |

*PEX-A Tubing



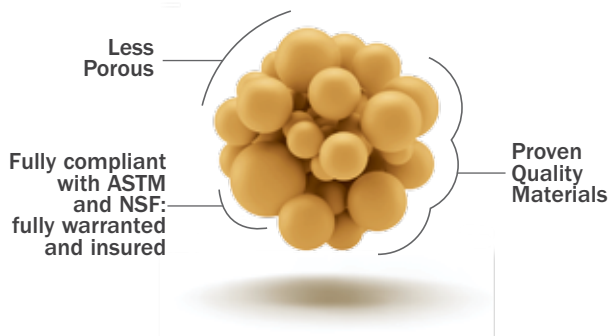
ALL THE NECESSARY TOOLS TO MAKE A PERFECT CONNECTION

Materials Make A Difference

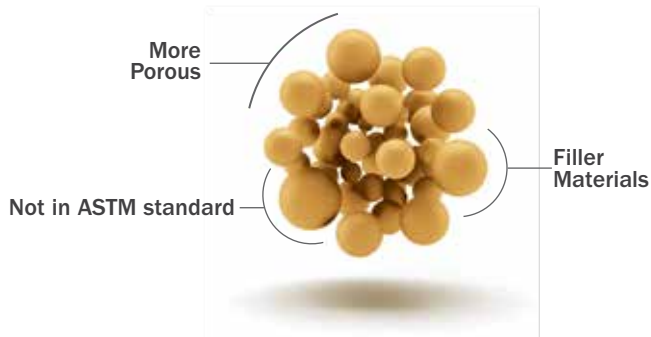
The majority of system wide failures are directly related to fitting material breakdowns or improperly made crimp joints. Inferior overseas materials have historically been suspect in design or manufacturing process. From wall thicknesses to the exact chemical composition of a fitting, PowerPEX fittings embody the strength to withstand harsh water conditions, are compliant with necessary certifications and will withstand a lifetime of plumbing service... even in the harshest of conditions. Sioux Chief believes in quality. We build quality into our fittings instead of inspecting it out. We warrant our products, without restriction of installation. We do this to provide our customers the peace of mind and the best plumbing solutions to last for the lifetime of the plumbing system.

Material Manufacture (Mix)

Domestic SCM Brass (EcoBrass)



Import/Foreign Brass (Muntz Metal/Bismuth Brass)



Material Composition (Makeup)



EcoBrass:

Tenured brass alternative. No Lead. Best industry protection against dezincification and stress corrosion cracking. Compliant to and listed within ASTM standards. SCM fittings are Made in America from domestic materials.

Muntz Metal:

Lead is replaced with more Zinc. Sioux Chief does not use alloy choices like this due to their inability to pass NSF-14 testing for dezincification and stress corrosion cracking.

Bismuth Brass:

Bismuth replaces lead. Sioux Chief does not use bismuth brass. Bismuth becomes brittle and has negative performance characteristics in high heat applications.

Why Choose Better Brass

Dezincification (dealloying)



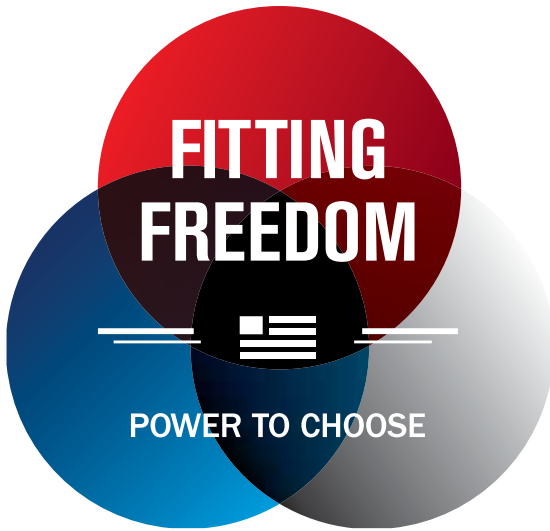
There are jurisdictions in every state that have harsh water that can cause premature fitting failure. Have you chosen a fitting material that will protect you?

Stress Corrosion Cracking (SCC)



Improperly made fittings or fittings made from the wrong material can be suspect to stress corrosion cracking. Are yours?

Hybrid Systems

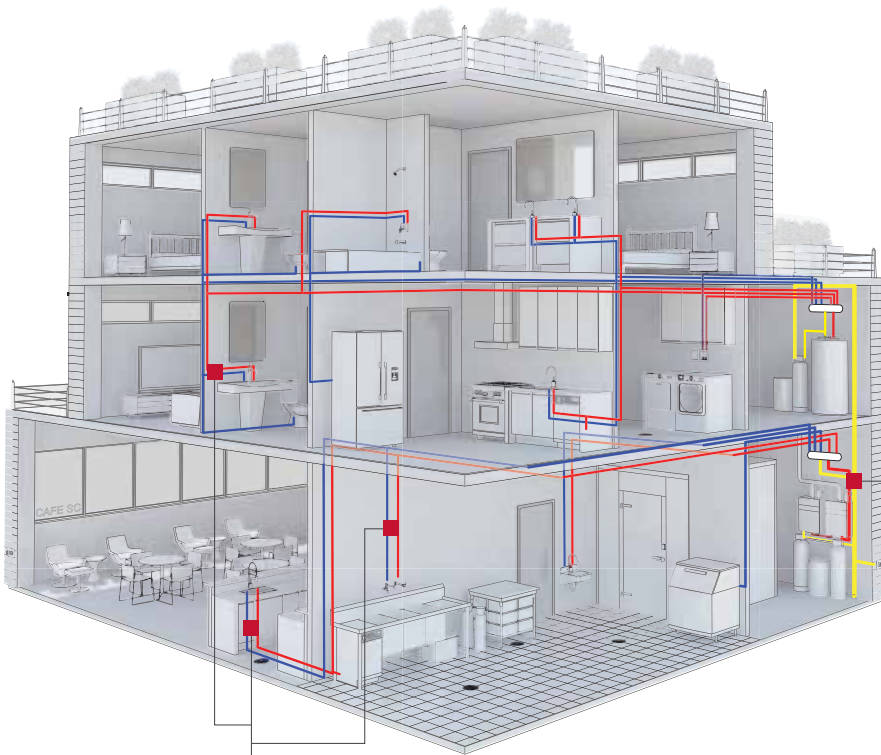


What: Hybrid systems combine multiple plumbing connection types within one system. A branch run may be plumbed in F1807 whereas an arterial water main may be plumbed in copper or CPVC.

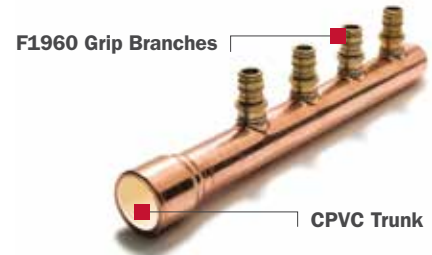
How: PowerPEX offers quality tube and quality fittings. Each is independently warranted regardless of system installation as long as they are in a compliant tube + fitting mix.

When: Hybrid applications work perfectly (as depicted) in applications where a header is plumbed in a more thermally stable tubing offering but branches off to a more flexible and cost-effective connection system solution.

Why: A plumber or building owner should not be restricted from choosing the strongest connection system that an application may require, or a connection system they are not comfortable with, or that does not allow them to compete.



ASTM F1960 Grip branches supply fixtures



Hybrid System Solution

Transition manifolds offer the perfect and warranted solution for changing from one supply tubing type to another

CPVC riser connects directly to manifold

PowerPEX & HYBRID PLUMBING: A NEW KIND OF BID WINNING STRATEGY.

Sioux Chief does not limit the warranty of PowerPEX tube and fitting systems





Fewer Leaks
Inventory Control
 Cost Control
Robust Solutions

Installation Consistency
 Expedite Bidding
 Aesthetically Pleasing
Unlimited Variety



Preformed Copper

- Fewer joints = less labor and fewer leaks
- Less labor = cost controls
- Fewer leaks = fewer claims and callbacks
- Each installation can maintain a standardized layout and design



Custom

- We cut, spin, form, bend, solder, braze & test copper tube using machines that we designed and built
- Custom fittings with your dimensions made for your jobs by American workers in our Missouri factory
- Every fitting we make is fully warranted



Kits

- Material management
- The right material on the right job at the right time
- No waste

SHOWERUP™
 SHOWER ASSEMBLY
 SYSTEM & KITS



Shower riser not shown

ROUGHUP™
 LAV STUB OUT
 SYSTEM & KITS



HEATUP™
 WATER HEATER CONNECTOR
 SYSTEM & KITS



PowerPEX Premium Products



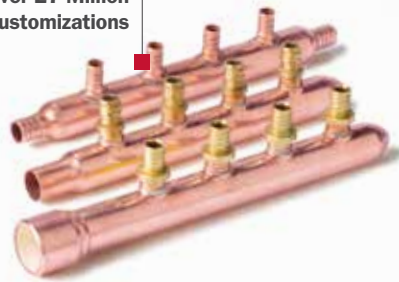
**SHIUX CHIEF
OFFERS ALL OF
OUR MOST
INNOVATIVE
PRODUCTS
WITH PowerPEX
CONNECTIONS.**

Preformed Copper (PFC)

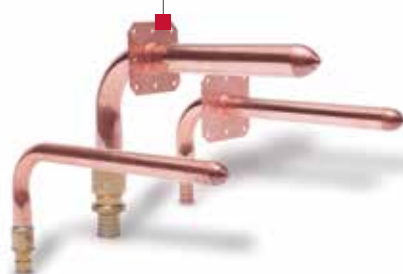


High-quality,
domestic
valve solutions

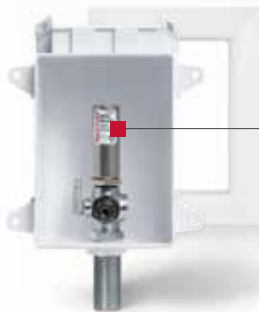
Over 27 Million
Customizations



Integral
Square O Strap



OxBox/Access



Made in USA
Arresters



Cost Saving
Solutions

Support



Complete CTS Hanging Options



Engineered Bracketing Solutions



TAKE THE FIELD.

24110 South Peculiar Drive
Peculiar, Missouri 64078
P 1.800.821.3944
F 1.800.758.5950

DISTRIBUTED BY

