

# Split System Submittal Data

Ceiling Recessed Heat Pump

System: 26PEU1U6 Indoor/Outdoor: S-26PU1U6/U-26PE1U6

Grille: CZ-24KPU1U



Job Name: \_\_\_\_\_  
 Location: \_\_\_\_\_  
 Engineer: \_\_\_\_\_  
 Submitted to: \_\_\_\_\_  
 Submitted by: \_\_\_\_\_  
 Reference: \_\_\_\_\_

Approval: \_\_\_\_\_  
 Date: \_\_\_\_\_  
 Construction: \_\_\_\_\_  
 Unit #: \_\_\_\_\_  
 Drawing #: \_\_\_\_\_



## General Data (at 230V)

Power V/PH/Hz 230/208/1/60  
 Circuit Ampacity (A) 15-30 Indoor-Outdoor  
 Fuse Size, Max. (A) 15-30 Indoor-Outdoor

Compressor DC Rotary Inverter  
 No. used 1  
 R.L. Amps - L.R. (A) 12.9-17.5

Outdoor Unit  
 Fan type Propeller  
 Dia. (in.) - No. Speeds 18-7/64-1  
 Type Drive - No. Speeds DC Motor  
 No. Poles (RPM) 8 - 800  
 No. Motors (W) 1 - 90  
 CFM (High) 1765  
 F.L. Amps (A) 13.8

Coil Type Aluminum Fin & Copper Pipe  
 Fin Type - Pipe Type Slit Plate - Inner Rifled  
 Rows - F.P.I. 1-15.9  
 Face Area (sq.ft.) 7.26  
 Tube Size (in.) 3/8"

Indoor Unit  
 Fan type Turbo  
 Dia. & Length (in.) - No. Speeds 17-7/16-1  
 No. Speeds 3 & Auto  
 No. Poles (RPM, High) 6 - 466  
 No. Motors (W) 1 - 40  
 CFM (Hi/Med/Lo) 710/530/450  
 Indoor Sound Rating (Hi) (dB-A) 38  
 F.L. Amps (A) 0.7

Coil Type Aluminum Plate Fin & Copper Tube  
 Fin Type - Pipe Type Slit Plate - Inner Rifled  
 Rows - F.P.I. 2 - 14.9  
 Face Area (sq.ft.) 3.69  
 Tube Size (in.) 9/32"  
 Drain Connection Size (in.) 1-17/64

Refrigerant R410A  
 Lbs. - R410a (outdoor unit) 4.19  
 Control Electric Expansion Valve  
 Connection Flare  
 Line Length, Max (ft.) 165  
 Lift Difference, Max (ft.) 50 (outdoor lower), 100 (outdoor higher)  
 Line Size (in. O.D. Discharge) 3/8"  
 Line Size (in. O.D. Suction) 5/8"

Dimensions (in.) H x W x D  
 Indoor Unit (Uncrated) 13-5/16 x 33-55/64 x 33-55/64  
 (Crated) 11-9/64 x 32-7/8 x 33-9/32  
 Outdoor Unit (Uncrated) 30-23/32 x 37 x 3-3/8  
 (Crated) 34-31/32 x 39-31/32 x 16-3/32

Weight Indoor Outdoor  
 Net (lbs.) 49 128  
 Shipping (lbs.) 57 148

Shipping Volume (cu.ft.) Indoor Outdoor  
 7.1 13.0

## Performance Data @ ARI Standard Conditions (230/208V)

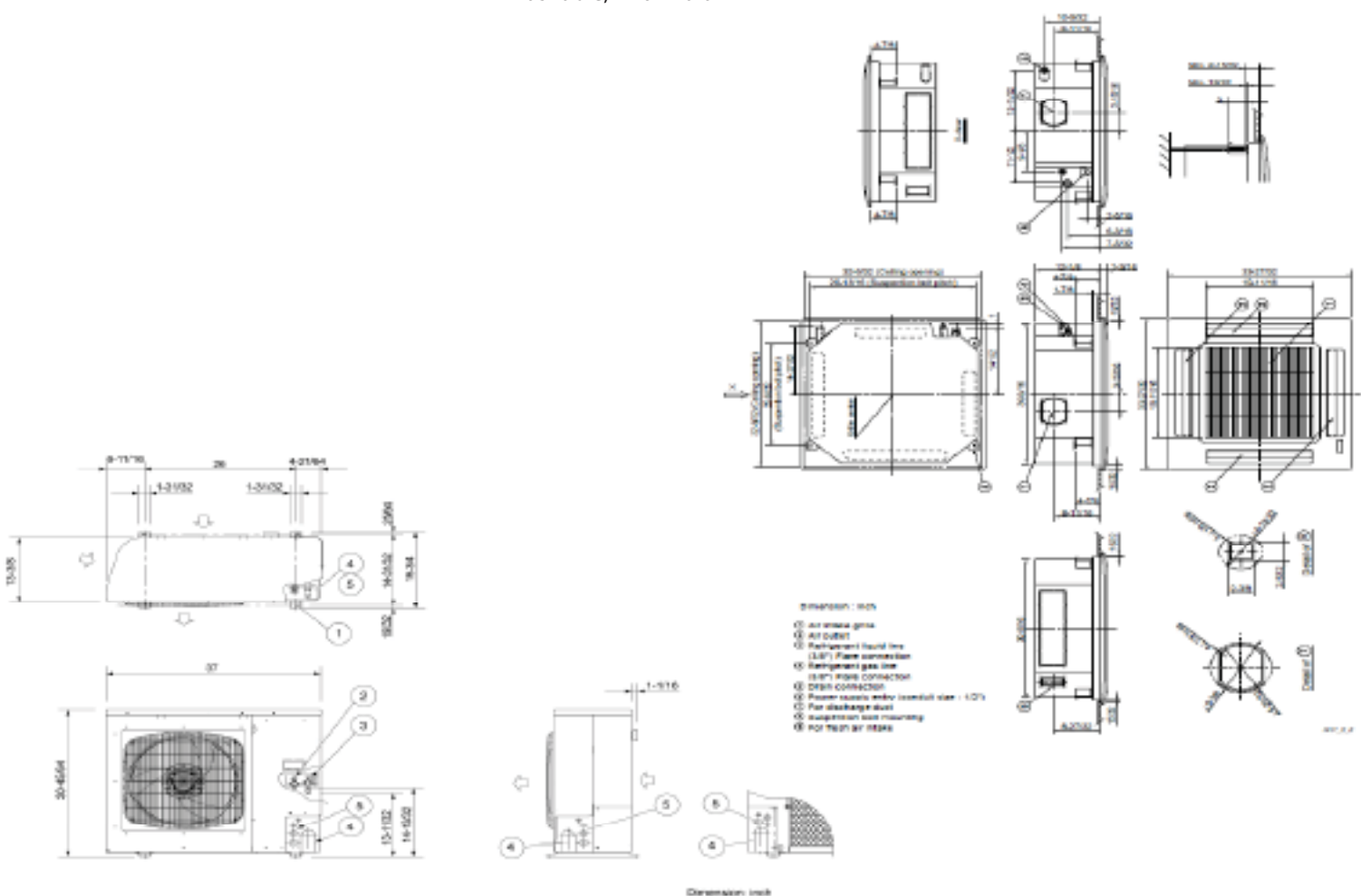
Cooling  
 Total Capacity (BTU/H) 24,800 (9,500-24,800)  
 Sensible Capacity (BTU/H) 14,810  
 Latent Capacity (BTU/H) 9,990  
 SEER 14.1  
 Dehumidification (Pints/H) 8.1  
 Amps (A) 15.6/17.3  
 Power Inputs (W) 2,920/2,920  
 Outdoor Sound Rating (dB-A) 49

Heating  
 Total Capacity (BTU/H) 29,800 (8,000-29,800)  
 HSPF 10.5

# Dimensions

Heating			Options	
Amps	(A)	14.8/16.4	Refrigerant Line Set	Available
Max. Amps	(A)	14.8/16.4	Fresh Air Intake	Available
Power Inputs	(W)	2,790/2,790	Air duct Extension	Knock-out
Back-up Strip Heater	(KW)	0.00/0.00	Condensate Drain Pump	Standard
Outdoor Sounds Rating	(dB-A)	49	Wireless Remote Controller	Available
			Non-Removeable Locking Remo-con Bracket	Available

Features			Operating Range	
Controls			Microprocessor	
Remote Controller	LCD Wired Type, Temp. Sensor Built In		Indoor Air Intake Temp.	Outdoor Air Intake Temp.
Temperature Control	IC Thermostat		Maximum	95F DB/71F WB
Timer	72 Hr. ON/OFF		Minimum	67F DB/57F WB
Night Setback	Built-In			115F DB
Air Louver	(Horizontal)	Manual		0F DB
	(Vertical)	Automatic	Indoor Air Intake Temp.	Outdoor Air Intake Temp.
Power Failure Automatic Restart	Built-In		Maximum	80F DB/67F WB
Heating/Cooling Automatic Changeover	Built-In		Minimum	-DB/-WB
Self-Diagnosis	Built-In			75F DB/65F WB
Air Filter	Washable, Anti-Mold			5F DB



Panasonic ideas for life

Panasonic North America

Air Conditioning Division

1690 Roberts Blvd., NW, Suite 110

Kennesaw, GA. 30144

<http://www.panasonic.com/aircon>

