

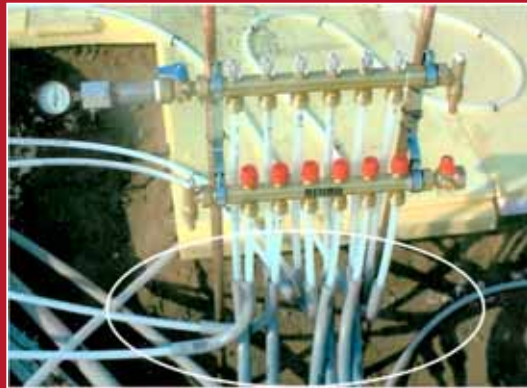
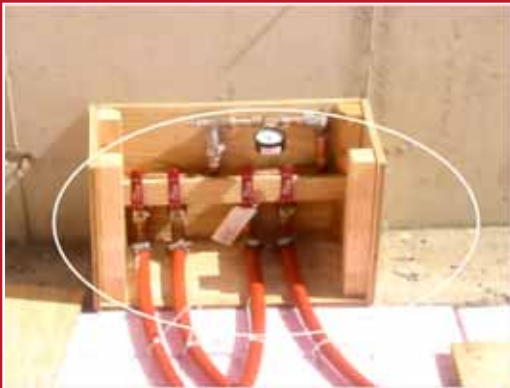
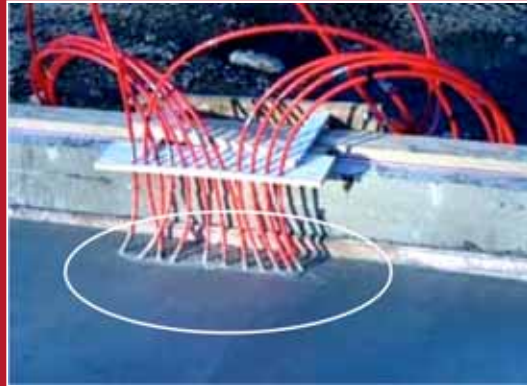
This presentation is brought to you by:



EZ Route products are ideal for *in-floor radiant heating* and *domestic water supply* where a stable, self supporting base is needed.

Tomahawk, Wisconsin U.S.A.

*The old method: Time consuming unprofessional finish!*





*The new method: faster, easier, cost reducing...*



**EZROUTE™**  
The next generation in PEX routing.

... and have a clean, professional finished look like this!



## **Things you need to know about our systems**

- **Route Pex & Pex-AI-Pex.**
- **Supply and Return! In Unison!**  
of 1/2", 5/8" or 3/4" diameter.
- **2 Tubes installed per channel!**  
(ex: 6 loop system requires 6 channels)
- **Cut to size.** Use a utility knife or reciprocating saw to cut to your specifications. Remaining channels can be used for your next job!
- **Secures to the ground!**
- **Great for concrete applications!**  
(can also be used in floor truss or joist systems)
- **Plumbers** use for underground plumbing slab applications.
- **100% Recyclable** made with HDPE  
(High Density Polyethylene)



• **RADIUS ONLY**



• **STRAIGHT**



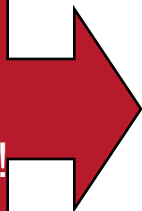
• **PREMIER**



**EZROUTE™**  
The next generation in PEX routing.

2009 Product Line

Choose the  
right  
product for  
the right job!



**EZ ROUTE PREMIER Everything you need to complete an installation!**

*Slab Application:* The Premier System is a complete package providing the contractors all of the materials needed to make routing quick and easy.

*included materials:* 12 channel EZ Route Base, 8" pole barn spikes, Installation Instructions

**EZ ROUTE RADIUS Our signature "Curve" product!**

*Slab or Floor Joist Application:* The Radius is sold by itself. If you have access to supporting and installation materials, then this will be a good, economical choice to make your 90 degree turns easy and organized.

*included materials:* 12 channel EZ Route Radius, Installation Instructions

**EZ ROUTE STRAIGHT Added security to keep your tubes up and away from the concrete pour.**

*Application:* The Straight is an add-on accessory that can be used with the Premier or the Radius, keeping your tubes directed upward and straight. This allows for easy labeling as well as keeping the tubes out of the way of the masons. This will save time, money and hassle.

*included materials:* 12 Channel EZ Route Straight, Installation Instructions



*No wasted time or material.  
Use remainder on your next project!*

**EZROUTE™**



**The next generation in PEX routing.**



[www.theEZRoute.com](http://www.theEZRoute.com)

For more information please call:  
(715) 453-1111