

PARTS CATALOG



MrPEX[®]
SYSTEMS

WHY MR PEX® SYSTEMS?

Mr PEX® Systems is one of the leading radiant floor heating and domestic hot and cold water systems suppliers in North American marketplace. Our core product, Mr PEX® Tubing, is considerably more flexible, kink-resistant and able to hold more pressure than any other PEX Tubing on the market today! Combined with our highly technical knowledge and dedication to customer service it's no wonder Mr PEX® Systems is one of the fastest growing radiant system suppliers in North America.

The Mr PEX® Radiant Panel System:

The Mr PEX® Radiant Panel Heating System is a complete heat distribution system, consisting of tubing, fittings, manifolds, controls and accessories that are matched for high performance and reliability over many years of service. When used together, these components provide trouble free installation and long-term reliability. The Mr PEX® tubing and fittings meet current national standards of performance and dimensional tolerances. Products from other manufacturers may deviate significantly from these national standards with minimum tolerances or products that are completely outside the tolerances set by national standards. Therefore, it is recommended, as a best course, to only use Mr PEX® radiant heating pipe and fittings components as a complete system.

WHO IS MR PEX®?

Mr PEX®—Tomas Lenman—started at Wirsbo Bruks AB in Sweden as a development engineer in 1971, developing the very first PEX process ever invented. He developed many Standard Specifications for PEX Tubing in Europe and Australia. Mr PEX® wrote the ASTM F 876/877 for PEX Tubing during 1982–84. In 1982 he co-authored the book “Water and Pipes”. He founded and managed Wirsbo Company (USA) 1984–1992 and continued consulting for this group until 1996. He authored the CSA B137.5 standard for PEX Tubing in 1989.

Mr PEX® managed the successful start-up of Roth Industries PEX Tubing Division 1997–2001 after which he started his own radiant floor heating supply company: Mr PEX® Systems using PEX Tubing with exclusive distribution in North America for LK PEX AB in Sweden. The unique production process is invented by Mr. Lennart Aagren of Sweden, previously manager of Uponor Innovation AB for many years, and his second innovation of a PEX Tubing manufacturing process.



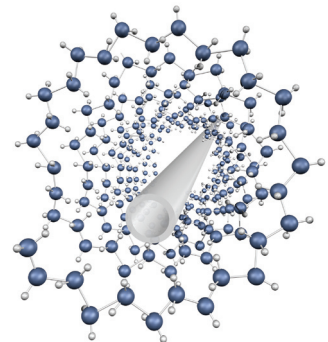
No one has more knowledge and experience with PEX Tubing and Radiant Floor Heating Systems than Mr PEX®.

MR PEX® TUBING

A Slinky® is suspended on elastic threads around itself. There is no reinforcement along its length. Thus making it free to move and remarkably flexible. The shape remains round. It never kinks, although the bending radius is minimal.

Similarly, PEX molecular chains extend around the tubing like the Slinky® string circles around itself. This makes Mr PEX® Tubing extremely flexible and kink-resistant. The molecular chain is aligned to resist stress around its perimeter. It is unusually strong, resisting inside pressure.

The molecular orientation is achieved during extrusion which is a very unique process. Crosslinking occurs simultaneously with the orientation. Peroxide crosslinking guarantees optimal Tubing properties.



OXYGEN DIFFUSION

Mr PEX® Tubing with Barrier is available with an external Oxygen Diffusion Barrier which meets the stringent requirements of the European DIN 4726 standard. This standard restricts the amount of oxygen that is allowed to permeate the pipe and affect corrodible cast iron or steel components within the system. The standard allows permeation of less than or equal to 0.10 g/(m³ d) equivalent to 0.32 mg/(m² d). This is an amount that is consistent with approximately half a system refill with fresh water on an annual basis.

PEX-A TUBING

Mr PEX® Barrier PEX tubing is Cross-Linked Polyethylene (PEX-a) manufactured in accordance with ASTM F 876. Tubing is listed to ASTM F 876/877 (CSA B137.5), ICC ES PMG, and also certified by NSF (NSF-rfh). Mr PEX® Barrier PEX tubing is rated by the Hydrostatic Stress Board of PPI (Plastics Pipe Institute) at: 160 psi at 73.4°F; 100 psi at 180°F; 80 psi at 200°F. Mr PEX® Barrier PEX tubing has an EVOH oxygen barrier that meet DIN 4726. Tubing sizes 3/8" through 3/4" also have a thin coating of PE on top of the barrier in order to reduce noise when installed in Aluminum heat transfer plates.



Part#	Description	Type	Unit
1210060	3/8" – Mr PEX® Tubing with Oxygen Barrier	600 ft.	Coil
1210100		1,000 ft.	Coil
1220030	1/2" – Mr PEX® Tubing with Oxygen Barrier	300 ft.	Coil
1220050		500 ft.	Coil
1220100		1,000 ft.	Coil
1220120		1,200 ft.	Coil
1220160		1,600 ft.	Coil
1230033	5/8" – Mr PEX® Tubing with Oxygen Barrier	330 ft.	Coil
1230050		500 ft.	Coil
1230100		1,000 ft.	Coil
1240030	3/4" – Mr PEX® Tubing with Oxygen Barrier	300 ft.	Coil
1240050		500 ft.	Coil
1250030	1" – Mr PEX® Tubing with Oxygen Barrier	300 ft.	Coil

PEX-AL-PEX TUBING

Mr PEX® PEX-AL-PEX tubing is a composite pipe manufactured to ASTM F 1281–2005 (CSA B137.10). Our tubing is certified by NSF (NSF-pw & NSF-rfh) and temperature/pressure rated by the Hydrostatic Stress Board of PPI (Plastics Pipe Institute) in accordance with ASTM F 1281–2005 (CSA B137.10) to 160 psi at 200°F. Mr PEX® PEX-AL-PEX tubing is in compliance with; chlorine resistance test method ASTM F2023 and carries the cNSF and cNSFus mark, and AWWA C903 for water service. Mr PEX® PEX-AL-PEX tubing has an aluminum core that is 100% gas/oxygen tight. This gives it the advantages of both metal and plastic pipe, but not the disadvantages.



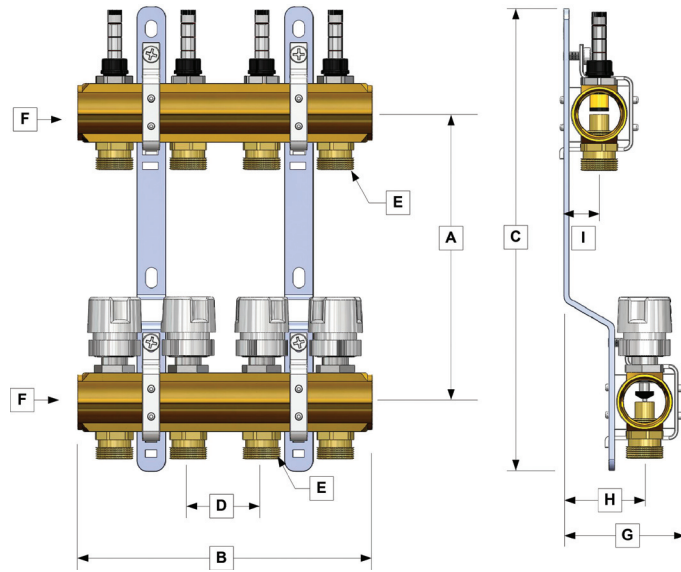
Part#	Description	Type	Unit
1310120	3/8" – Mr PEX® PEX-AL-PEX Tubing	Orange coil of 1200 ft.	Coil
1320025	1/2" – Mr PEX® PEX-AL-PEX Tubing	Orange coil of 250 ft.	Coil
1320030		Orange coil of 300 ft.	Coil
1320100		Orange coil of 1000 ft.	Coil
1321080		Orange sticks of 20 ft.	Tube of 40
1322030		Orange coil of 100 ft.	Box of 3
1330040	5/8" – Mr PEX® PEX-AL-PEX Tubing	Orange coil of 400 ft.	Coil
1330050		Orange coil of 500 ft.	Coil
1340030	3/4" – Mr PEX® PEX-AL-PEX Tubing	Orange coil of 300 ft.	Coil
1340050		Orange coil of 500 ft.	Coil
1341032		Orange sticks of 20 ft.	Tube of 16
1342020		Orange coil of 100 ft.	Box of 2
1350010	1" – Mr PEX® PEX-AL-PEX Tubing	Orange coil of 100 ft.	Coil
1350030		Orange coil of 300 ft.	Coil
1350050		Orange coil of 500 ft.	Coil
1351020		Orange sticks of 20 ft.	Tube of 10
1420030	1/2" – Mr PEX® PEX-AL-PEX Tubing	Blue coil of 300 ft.	Coil
1421080		Blue sticks of 20 ft.	Tube of 40
1422030		Blue coil of 100 ft.	Box of 3
1440030	3/4" – Mr PEX® PEX-AL-PEX Tubing	Blue coil of 300 ft.	Coil
1441032		Blue sticks of 20 ft.	Tube of 16
1442020		Blue coil of 100 ft.	Box of 2
1450010		1" – Mr PEX® PEX-AL-PEX Tubing	Blue coil of 100 ft.
1450030	Blue coil of 300 ft.		Coil
1451020	Blue sticks of 20 ft.		Tube of 10

MANIFOLDS

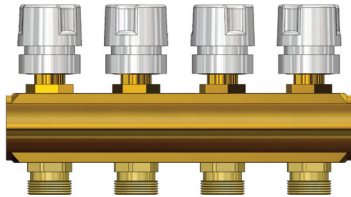
1.25" BRASS MANIFOLDS

Mr PEX® 1.25" Brass Manifolds are made from high-quality extruded brass and offered in 2–6 loop modular sections. These sections are available in three different types; valved, valveless and balancing with flow-meter. On the supply side, use either the balancing section with adjustable flow-meters for flows up to 1.6 gpm per loop, or the valveless section. For the return side use the valved section with on/off valves. The manual plastic cap on the return valve can be removed to accommodate a valve actuator. The return balancing valve disc is designed to enable exact adjustments of small flows while still being able to handle large flows with minimal resistance. The combined branch C_v value is 1.64 gpm and the manifold body accommodates flows up to 14 gpm.

All manifold sections come with brackets for mounting. Each inlet of the manifold has a G1" thread (BSP straight metric thread) to accommodate the "Mr PEX® Manifold Options" multi-function swivel End Cap allowing for Fill/Drain or Vent, basic end caps or adapters for appropriate connection. The branches have Eurokonus (EK20) connections, and all Mr PEX® EK20 compression fitting assemblies (PEX to EK20 or PEX-AL-PEX to EK20) can be used to connect tubing to the manifold.



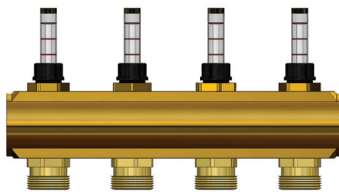
NOTE: When zoning with #700 actuator on this manifold, use light grey adapter VA-10.



Supply or Return

1.25" Valved Manifolds Ready for Actuators ▶ Sizes per chart above

Part#	Type	A	B	C	D	E	F	G	H	I
3130200	2 Branches	8.25"	4"	13"	2"	EK 20	1" BSP	3.5"	2.37"	1.13"
3130300	3 Branches	8.25"	6"	13"	2"	EK 20	1" BSP	3.5"	2.37"	1.13"
3130400	4 Branches	8.25"	8"	13"	2"	EK 20	1" BSP	3.5"	2.37"	1.13"
3130500	5 Branches	8.25"	10"	13"	2"	EK 20	1" BSP	3.5"	2.37"	1.13"
3130600	6 Branches	8.25"	12"	13"	2"	EK 20	1" BSP	3.5"	2.37"	1.13"



Supply Only

1.25" Supply Manifolds with Balancing Valves & Flow Meter ▶ Sizes per chart above

Part#	Type	A	B	C	D	E	F	G	H	I
3120200	2 Branches	8.25"	4"	13"	2"	EK 20	1" BSP	3.5"	2.37"	1.13"
3120300	3 Branches	8.25"	6"	13"	2"	EK 20	1" BSP	3.5"	2.37"	1.13"
3120400	4 Branches	8.25"	8"	13"	2"	EK 20	1" BSP	3.5"	2.37"	1.13"
3120500	5 Branches	8.25"	10"	13"	2"	EK 20	1" BSP	3.5"	2.37"	1.13"
3120600	6 Branches	8.25"	12"	13"	2"	EK 20	1" BSP	3.5"	2.37"	1.13"



Supply or Return

1.25" Basic Manifolds without Valves ▶ Sizes per chart above

Part#	Type	A	B	C	D	E	F	G	H	I
3110200	2 Branches	8.25"	4"	13"	2"	EK 20	1" BSP	3.5"	2.37"	1.13"
3110300	3 Branches	8.25"	6"	13"	2"	EK 20	1" BSP	3.5"	2.37"	1.13"
3110400	4 Branches	8.25"	8"	13"	2"	EK 20	1" BSP	3.5"	2.37"	1.13"
3110500	5 Branches	8.25"	10"	13"	2"	EK 20	1" BSP	3.5"	2.37"	1.13"
3110600	6 Branches	8.25"	12"	13"	2"	EK 20	1" BSP	3.5"	2.37"	1.13"

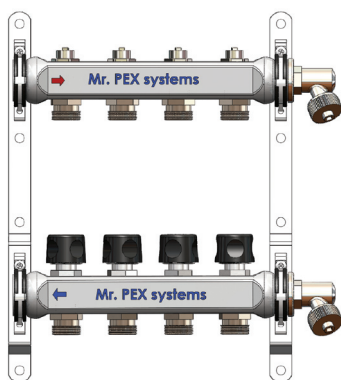
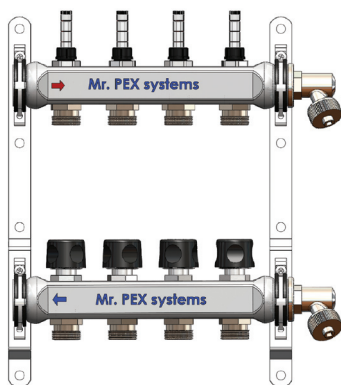
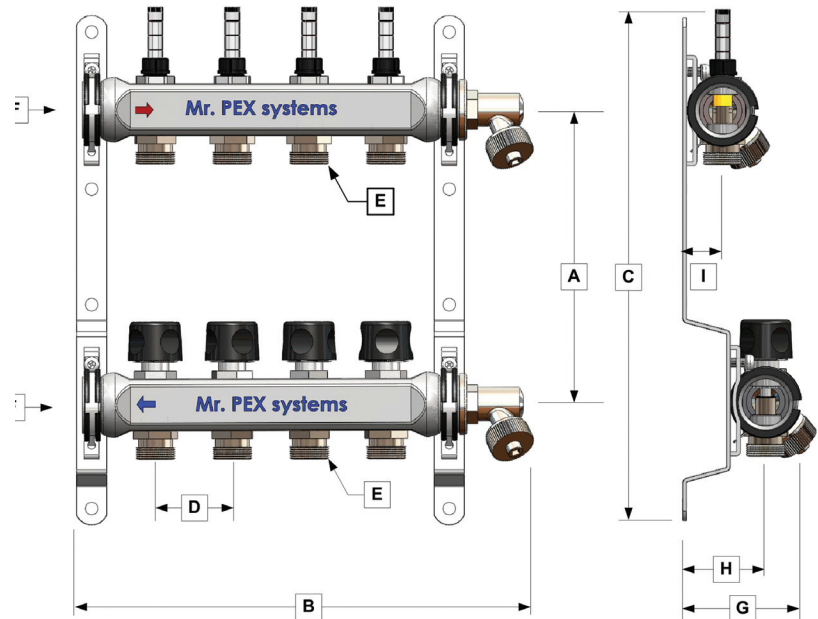
1.25" STAINLESS STEEL MANIFOLDS

Mr PEX® Stainless Steel manifolds achieves the highest level of long term corrosion resistance by using a bright annealed high-grade stainless steel with high nickel content. This creates a stable material structure with low levels of ferrite and magnetism. To eliminate the possibility of contact corrosion, all fittings connected to the manifold are nickel-plated.

The manifolds are fully assembled, ready for mounting. These manifolds come in two versions, with or without flowmeters. The supply side features either adjustable flow-meters for visual flow indication, or a manual balancing valve for flows up to 2 gpm per loop, and the return side has balancing on/off valves, in accordance with DIN EN 1264-4. The adjustable flow-meter and balancing valves allow for a positive shut-off and the manual plastic cap on the return valve can be removed to accommodate a valve actuator. The return balancing valve disc is designed to enable exact adjustments of small flows while still being able to handle large flows with minimal resistance. The combined branch C_v value is 1.64 gpm and the manifold body accommodates flows up to 14 gpm.

The supply and return manifold bodies both have a multi-function swivel End Cap allowing for Fill/Drain or Vent. Each inlet of the manifold has a G1" thread (BSP straight metric thread) allowing for easy connections of the supply and return mains. Use only "Mr PEX® Manifold Options" adapters for appropriate connection. The branches have Eurokonus (EK20) connections, and all Mr PEX® EK20 compression fitting assemblies (PEX to EK20 or PEX-AL-PEX to EK20) can be used to connect tubing to the manifold.

NOTE: When zoning with #700 actuator on this manifold, use dark grey adapter VA-50.



Valve & Balancing, Flow Meter, Fully Assembled ▶ Sizes per chart above

Part#	Type	A	B	C	D	E	F	G	H	I
3210200	2 Branches	8"	7.75"	13.4"	2"	EK 20	1" BSP	3.13"	2.25"	1.1"
3210300	3 Branches	8"	9.75"	13.4"	2"	EK 20	1" BSP	3.13"	2.25"	1.1"
3210400	4 Branches	8"	11.75"	13.4"	2"	EK 20	1" BSP	3.13"	2.25"	1.1"
3210500	5 Branches	8"	13.75"	13.4"	2"	EK 20	1" BSP	3.13"	2.25"	1.1"
3210600	6 Branches	8"	15.75"	13.4"	2"	EK 20	1" BSP	3.13"	2.25"	1.1"
3210700	7 Branches	8"	17.75"	13.4"	2"	EK 20	1" BSP	3.13"	2.25"	1.1"
3210800	8 Branches	8"	19.75"	13.4"	2"	EK 20	1" BSP	3.13"	2.25"	1.1"
3210900	9 Branches	8"	21.75"	13.4"	2"	EK 20	1" BSP	3.13"	2.25"	1.1"
3211000	10 Branches	8"	23.75"	13.4"	2"	EK 20	1" BSP	3.13"	2.25"	1.1"

Valve & Balancing, Fully Assembled ▶ Sizes per chart above

Part#	Type	A	B	C	D	E	F	G	H	I
3220200	2 Branches	8"	7.75"	13.4"	2"	EK 20	1" BSP	3.13"	2.25"	1.1"
3220300	3 Branches	8"	9.75"	13.4"	2"	EK 20	1" BSP	3.13"	2.25"	1.1"
3220400	4 Branches	8"	11.75"	13.4"	2"	EK 20	1" BSP	3.13"	2.25"	1.1"
3220500	5 Branches	8"	13.75"	13.4"	2"	EK 20	1" BSP	3.13"	2.25"	1.1"
3220600	6 Branches	8"	15.75"	13.4"	2"	EK 20	1" BSP	3.13"	2.25"	1.1"
3220700	7 Branches	8"	17.75"	13.4"	2"	EK 20	1" BSP	3.13"	2.25"	1.1"
3220800	8 Branches	8"	19.75"	13.4"	2"	EK 20	1" BSP	3.13"	2.25"	1.1"
3220900	9 Branches	8"	21.75"	13.4"	2"	EK 20	1" BSP	3.13"	2.25"	1.1"
3221000	10 Branches	8"	23.75"	13.4"	2"	EK 20	1" BSP	3.13"	2.25"	1.1"

MANIFOLDS

LARGE DIMENSION 1.5" BRASS MANIFOLDS

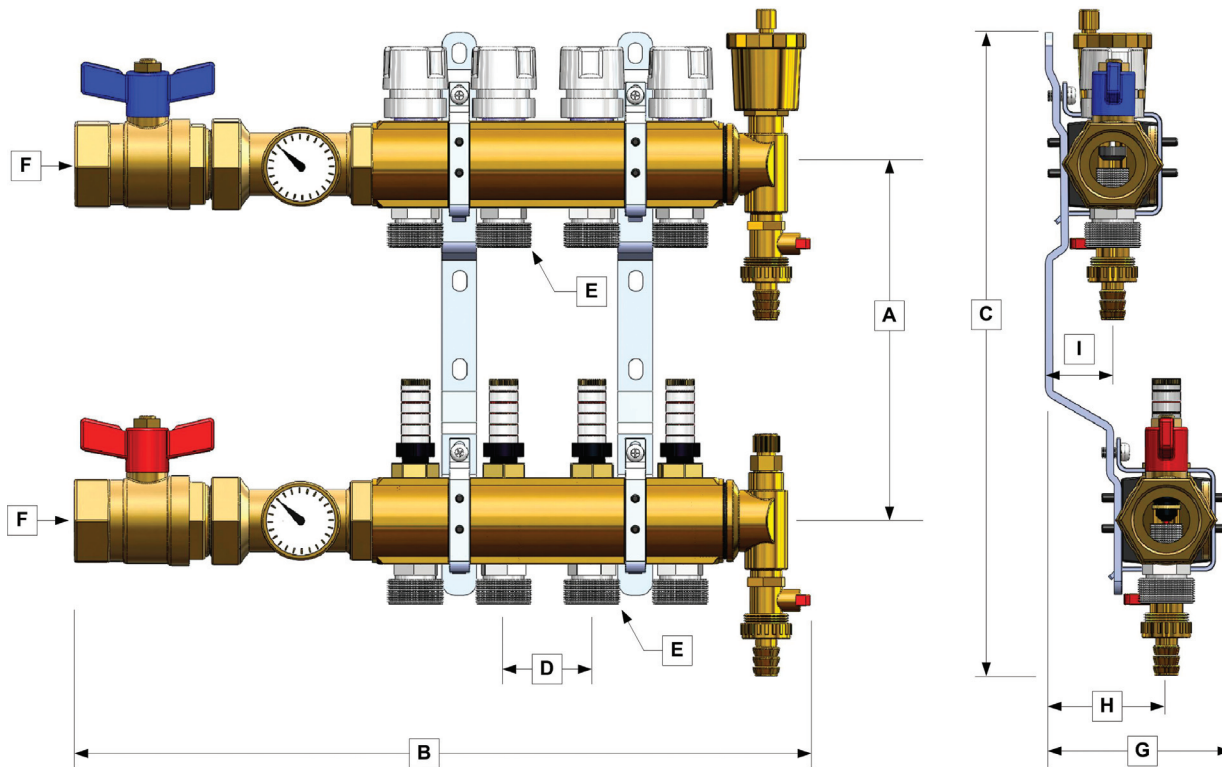
Mr PEX® 1.5" Brass Manifolds are made from high-quality extruded brass and offered in 2–10 loop pre-assembled configurations (no 7 or 9 loop version). The supply side features balancing manifold with adjustable flow-meters for flows up to 1.6 gpm per loop. The return side features a valved manifold with on/off valves. The manual plastic cap on the return valve can be removed to accommodate a valve actuator. The return balancing valve disc is designed to enable exact adjustments of small flows while still being able to handle large flows with minimal resistance. The combined branch C_v value is 1.64 gpm and the manifold body accommodates flows up to 22 gpm.

All manifolds come mounted on brackets. Each inlet of the manifold has a G 1.25" thread (BSP straight metric thread) to accommodate the isolation ball valve. The isolation ball valve threads into the manifold body and features a 1.25" NPT female thread to accommodate any standard connections. The branches have Eurokonus (EK25) connections, and all Mr PEX® EK25 compression fitting assemblies (PEX to EK25 or PEX-AL-PEX to EK25) can be used to connect tubing to the manifold.

NOTE: When zoning with #700 actuator on this manifold, use light grey adapter VA-10.

1.5" Brass Manifold, Valve & Balancing Flow Meter, Fully Assembled ▶ Sizes per chart below

Part#	Type	A	B	C	D	E	F	G	H	I
3310200	2 Branches	8.25"	12.4"	13"	2"	EK 25	1.25" BSP	4.5"	2.87"	1.68"
3310300	3 Branches	8.25"	14.4"	13"	2"	EK 25	1.25" BSP	4.5"	2.87"	1.68"
3310400	4 Branches	8.25"	16.4"	13"	2"	EK 25	1.25" BSP	4.5"	2.87"	1.68"
3310500	5 Branches	8.25"	18.4"	13"	2"	EK 25	1.25" BSP	4.5"	2.87"	1.68"
3310600	6 Branches	8.25"	20.4"	13"	2"	EK 25	1.25" BSP	4.5"	2.87"	1.68"
3310800	8 Branches	8.25"	24.4"	13"	2"	EK 25	1.25" BSP	4.5"	2.87"	1.68"
3311000	10 Branches	8.25"	28.4"	13"	2"	EK 25	1.25" BSP	4.5"	2.87"	1.68"



COPPER MANIFOLDS

Mr PEX® Copper Manifolds are available in 1", 1.5" and 2" modular bodies with branches offering copper sweat, crimp, or EK connections.

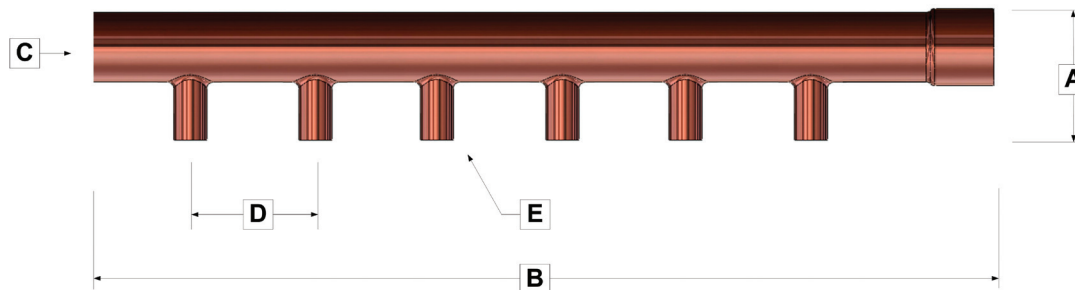
The **1" Copper Manifolds** have Female x Male Trunks so they can easily be expanded to any number of branches. The 2, 3, or 4 branches are 2" on Center. The **1.5" and 2" Copper Manifolds** have Female x Male Trunks. They have each six 3/4" Copper Branches 3" on center. Cut, and/or sweat together in order to receive at any number of branches.

1.5" Copper; Male x Female with 3/4" CU Branches ▶ *Sizes per chart below*

Part#	Type	A	B	C	D	E
3440600	6 Branches	4.0"	21.5"	1.5"	3"	3/4" CU

2" Copper Manifold; Male x Female with 3/4" CU Branches ▶ *Sizes per chart below*

Part#	Type	A	B	C	D	E
3450600	6 Branches	4.25"	21.5"	2"	3"	3/4" CU



MANIFOLD ACCESSORIES & REPLACEMENT PARTS

COPPER MANIFOLD ACCESSORIES

Mr PEX® Copper Manifold accessories offer mini-ball valves with EK connections, Copper End Cap and ASTM F1807 PEX Crimp Tools.



Part#	Description	Type	Unit
3465020	Mini Ball Valve	1/2" CU to EK 20	Box of 10
3465021	Mini Ball Valve w/ Balancing	1/2" CU to EK 20	Box of 10
3467525	Mini Ball Valve	3/4" CU to EK 25	Box of 10
3467526	Mini Ball Valve w/ Balancing	3/4" CU to EK 25	Box of 10
3481500	1.5" Copper End Cap	1/8" FIP for Vent & 1/2" Drain	Each
3482000	2" Copper End Cap	1/8" FIP for Vent & 1/2" Drain	Each

MANIFOLD ACCESSORIES AND REPLACEMENT PARTS

Mr PEX® Manifold Options are fittings that are designed to fit at either end of the 1.25" Brass or Stainless Steel manifold body using the G1" BSP straight thread, such as end caps and manifold transitions. Or, fittings designed to fit on the EK 20 or EK 25 loop branch connections.



Part#	Description	Type	Unit
3610001	End Cap with Swivel Fill/Drain Valve	for 1.25" Brass Manifold	Box of 2
3610002	Basic End Cap	for 1.25" Brass Manifold	Box of 2
3610003	Loop End Cap	EK 20	Bag of 2
3610004	Loop End Cap	EK 25	Bag of 2
3610005	Pressure Test Kit (100psi gauge, Air valve & Basic End Cap)	for 1.25" Brass & SS Manifolds	Each
3610006	Loop Branch Ball Valve	EK 20 x EK 20	Box of 10
3620001	Manifold Transition for 1.25" Brass and Stainless Steel	1" BSP to 1" and 1.25" CU	Bag of 2
3620002		1" BSP to 3/4" NPT	Bag of 2
3620003		1" BSP to 1" NPT	Bag of 2
3620004		1" BSP to 1" FIP	Bag of 2
3620005		1" BSP to 1" BSP, (Manifold Double Nipple)	Bag of 2
3620006		1" BSP to EK 25	Bag of 2
3620007		1" BSP to EK 32	Bag of 2
3620008		1" BSP Isolation Union Ball Valve	Bag of 2
3620009		1" BSP Angle Isolation Union Ball Valve	Bag of 2
3620018	Manifold Transition Ball Valve for 1.25" Manifolds	1" BSP Union to 1" Female NPT w/ Thermometer	Box of 2

COMPRESSION FITTINGS

PEX FITTINGS AND EUROKONUS (EK) FITTINGS

Mr PEX® Compression Fitting Assemblies for connection of Mr PEX® Barrier PEX tubing to Mr PEX® Manifolds or transition fittings with EK (Eurokonus) connection. Fittings consist of a nut, insert and compression ring made of brass. Insert features o-ring and EK (Eurokonus) seat.



Part#	Description	Type	Unit
4310375	PEX Fitting Assembly (Nut, Ring & Insert) for EK	3/8" PEX to EK 20	Bag of 10
4310500		1/2" PEX to EK 20	Bag of 10
4310625		5/8" PEX to EK 20	Bag of 10
4310750	(includes Adapter)	3/4" PEX to EK 20	Bag of 10
4320625	Copper Sweat Transition	5/8" PEX to EK 25	Bag of 10
4320750		3/4" PEX to EK 25	Bag of 10
4331000		1" PEX to EK 32	Bag of 10
4342050		EK 20 to 1/2" & 3/4" CU	Bag of 10
4342575	Copper Sweat Transition	EK 25 to 3/4" & 1" CU	Bag of 10
4343210		EK 32 to 1" & 1.25" CU	Bag of 2
4352020	Coupling Nipple for PEX to PEX	EK 20 to EK 20	Bag of 10
4352525		EK 25 to EK 25	Bag of 10
4353232		EK 32 to EK 32	Bag of 10

COMPRESSION FITTINGS FOR PEX-AL-PEX TUBING

Mr PEX® Compression Fitting Assemblies for connection of Mr PEX® PEX-AL-PEX tubing to Mr PEX® Manifolds or transition fittings with EK (Eurokonus) connection. Fittings consists of a nut, insert and compression ring made of brass. Insert features double o-ring and EK (Eurokonus) seat.

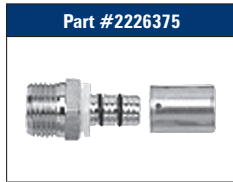
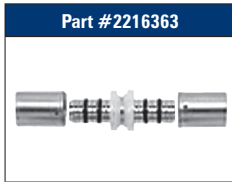


Part#	Description	Type	Unit
2410375	PEX-AL-PEX Fitting Assemblies	3/8" PAP to EK 20	Bag of 10
2410500		1/2" PAP to EK 20	Bag of 10
2410625		5/8" PAP to EK 20	Bag of 10
2430750		3/4" PAP to EK 25	Bag of 10
2445050	PEX-AL-PEX Transition w/ Fitting Assembly	1/2" PAP to 1/2" NPT	Bag of 10
2446375		5/8" PAP to 3/4" NPT	Bag of 10
2447575		3/4" PAP to 3/4" NPT	Bag of 10
2441010		1" PAP to 1" NPT	Bag of 10
2451010	PEX-AL-PEX Transition w/ Fitting Assembly	1" PAP to 1" FIP	Bag of 10
2461013	PEX-AL-PEX Transition w/ Fitting Assembly	1" PAP to 1.25" CU	Bag of 10
2421010	PEX-AL-PEX Repair Coupling w/ Fitting Assembly	1" PAP to 1" PAP	Bag of 10

PRESS FITTINGS

PRESS FITTINGS FOR PEX-AL-PEX TUBING (For Heating Only) *NOTE: Requires Mr PEX® Press Tool and reamer to complete the fitting.*

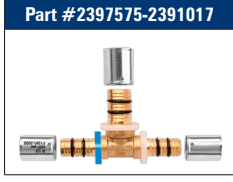
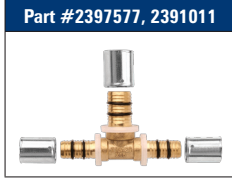
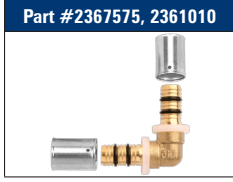
Mr PEX® Press Fittings for use with Mr PEX® ASTM F1281–2005 PEX-AL-PEX tubing in radiant applications. The body is made from nickel plated brass, double o-rings, and a stainless steel press sleeve. An accurately installed press fitting offers a fast, reliable, and permanent connection.



Part#	Description	Type	Unit
2110500	Press Fitting Assemblies	1/2" PAP to EK 20	Bag of 10
2110625		5/8" PAP to EK 20	Bag of 10
2216363	Press Coupling	5/8" PAP to 5/8" PAP	Bag of 10
2226375	Press Transition to NPT	5/8" PAP to 3/4" NPT	Bag of 10

DZR PRESS FITTINGS FOR PEX-AL-PEX TUBING (For Heating)

Mr PEX® Dezincification Resistant (DZR) press fittings for use with Mr PEX® ASTM F1281–2005 PEX-AL-PEX tubing and are optimal for use in potable water or radiant applications. These DZR fitting are in compliance with chlorine resistance test method ASTM F2023 and carries the cNSF and cNSFus mark and are designed for use in applications with poor water quality. The body is made from dezincification resistant brass, double o-rings, and a stainless steel press sleeve. (See Mr PEX® Price sheet for a larger selection of plumbing fittings.)



Part#	Description	Type	Unit
2315050	Press Coupling, DZR	1/2" PAP to 1/2" PAP	Bag of 10
2317575		3/4" PAP to 3/4" PAP	Bag of 10
2311010		1" PAP to 1" PAP	Bag of 5
2317550	Press Reducing Coupling, DZR	3/4" PAP to 1/2" PAP	Bag of 10
2311075		1" PAP to 3/4" PAP	Bag of 5
2325050	Press Transition to NPT, DZR	1/2" PAP to 1/2" NPT	Bag of 10
2325075		1/2" PAP to 3/4" NPT	Bag of 10
2327575		3/4" PAP to 3/4" NPT	Bag of 10
2321010		1" PAP to 1" NPT	Bag of 5
2335050	Press Transition to FIP, DZR	1/2" PAP to 1/2" FIP	Bag of 10
2337575		3/4" PAP to 3/4" FIP	Bag of 10
2331010		1" PAP to 1" FIP	Bag of 5
2355050	Press Sweat Adapter, DZR	1/2" PAP to 1/2" CU	Bag of 10
2355075		1/2" PAP to 3/4" CU	Bag of 10
2357575		3/4" PAP to 3/4" CU	Bag of 10
2351010		1" PAP to 1" CU	Bag of 5
2345050	Press Sweat Fitting Adapter, DZR	1/2" PAP to 1/2" CU	Bag of 10
2347575		3/4" PAP to 3/4" CU	Bag of 10
2345075		1/2" PAP to 3/4" CU	Bag of 10
2341010		1" PAP to 1" CU	Bag of 5
2367575	Press Elbow, DZR	3/4" PAP to 3/4" PAP	Bag of 10
2361010		1" PAP to 1" PAP	Bag of 5
2397577	Press Tee, DZR	3/4" PAP x 3/4" PAP x 3/4" PAP	Bag of 10
2391011		1" PAP x 1" PAP x 1" PAP	Bag of 5
2397575	Press Reducing Tee, DZR	3/4" PAP x 3/4" PAP x 1/2" PAP	Bag of 10
2391015		1" PAP x 1" PAP x 1/2" PAP	Bag of 5
2391017		1" PAP x 1" PAP x 3/4" PAP	Bag of 5
2380077	Press Elbow to Sweat Adapter, DZR	3/4" PAP to 3/4" CU	Bag of 10
2380177	Press Elbow to Sweat Fitting Adapter, DZR	3/4" PAP to 3/4" CU	Bag of 10
2300075	Press In-line Ball Valve, DZR	3/4" PAP to 3/4" PAP	Bag of 5
2300010		1" PAP to 1" PAP	Each

CONTROLS

Mr PEX® Controls offer electronic zone control featuring thermostats, zone boxes, valve actuators, zone valves, as well as thermostatic and electronic water temperature control valves and motors.



Part#	Description	Type	Unit
5120700	Valve Actuator, 4-wire (includes Manifold Valve adapters)	For Valved Manifolds	Each
5110740	Digital Room Thermostat (air only)		Each
5110741	Digital Room Thermostat Air and Floor	w/ Floor Sensor	Each
5130706	Zone Controller, w/ End-Switch and Pump Output Relay	Up to 6 Zones	Each
5120711	1/2" Zone Valve (includes Actuator w/ End Switch, C _v 2.1)	CU Union x CU Union	Each
5120712	3/4" Zone Valve (includes Actuator w/ End Switch, C _v 3.2)	CU Union x CU Union	Each
5120721	1/2" Zone Valve (includes Actuator w/ End Switch, C _v 2.1)	Female NPT x Male NPT	Each
5120722	3/4" Zone Valve (includes Actuator w/ End Switch, C _v 3.2)	Female NPT x Male NPT	Each
5120723	1" Zone Valve (includes Actuator w/ End Switch, C _v 4.0)	Female NPT x Male NPT	Each
5120724	1.25" Zone Valve (includes Actuator w/ End Switch, C _v 4.7)	Female NPT x Male NPT	Each
5210742	1" 3-way Thermostatic Mixing Valve	CU Union	Each
5240748	Strap on Pipe Thermometer, 70–200°F	For pipes 1/2"–4"	Box of 2
5230010	AUTOMIX 10: Room Temperature Reset Control Kit	Valve Motor w/ Built-in Control	Each
5230011	AUTOMIX CT: Constant Temp. Control Kit	32°F–194°F, Valve Motor w/ Built-in Control	Each
5230012	AUTOMIX CTR: Constant Temp. Control Kit w/ Remote Control	50°F–176°F, Valve Motor w/ Built-in Control	Each
5230013	Electronic Room Sensor w/ 49 ft Wire for AUTOMIX 10	Spare Part	Each
5230014	Remote Control w/ 49 ft Wire for AUTOMIX 10	Spare Part	Each
5220051	Valve Motor, 24 VAC, 90°, 70 sec, 5 Nm,	Floating Action w/ Mounting Kit NRA	Each
5220058	Valve Motor, 24 VAC, 90°, 70 sec, 5 Nm,	0–10 V w/ Mounting Kit NRA	Each
5220320	3-way Compact Mixing Valve of Brass, C _v 4.6	3/4" Female NPT	Each
5220325	3-way Compact Mixing Valve of Brass, C _v 9.3	1" Female NPT	Each
5220332	3-way Compact Mixing Valve of Brass, C _v 17.4	1.25" Female NPT	Each
5220420	4-way Compact Mixing Valve of Brass, C _v 4.6	3/4" Female NPT	Each
5220425	4-way Compact Mixing Valve of Brass, C _v 9.3	1" Female NPT	Each
5220432	4-way Compact Mixing Valve of Brass, C _v 17.4	1.25" Female NPT	Each
5221332	3-way Mixing Valve of Cast Iron, C _v 27.8	1.25" Female NPT	Each
5221340	3-way Mixing Valve of Cast Iron, C _v 36	1.5" Female NPT	Each
5221350	3-way Mixing Valve of Cast Iron, C _v 47.6	2" Female NPT	Each
5221432	4-way Mixing Valve of Cast Iron, C _v 27.8	1.25" Female NPT	Each
5221440	4-way Mixing Valve of Cast Iron, C _v 36	1.5" Female NPT	Each
5221450	4-way Mixing Valve of Cast Iron, C _v 47.6	2" Female NPT	Each

ACCESSORIES

Mr PEX® Accessories feature two styles aluminum heat transfer plates for even heat distribution in suspended applications. For retro-fit application on existing concrete or subfloor, consider the RetroPanel, a very efficient low profile product. Also, our manifold cabinets and a rough-in manifold stand aid in making a clean and professional installation.



Part#	Description	Type	Unit
6110702	Omega Aluminum Heat Transfer Plates for 1/2" Tubing	18" x 5"	Box of 100
6110732	Extruded C-Fin Aluminum Heat Transfer Plate for 1/2" Tubing	48" x 4"	Box of 20
6114001	RetroPanel Straight	15.75" x 31.5"	Box of 10
6114002	RetroPanel Turn-around	15.75" x 15.75"	Box of 20
6114003	Tube Shield for RetroPanel Straight	Replacement Part	Each
6114004	Cover for RetroPanel Turn-around	Replacement Part	Each
6114005	Filler Piece for RetroPanel	Small	Each
6114006	Filler Piece for RetroPanel	Large	Each
6114007	Fasteners for RetroPanel		Bag of 4
6210705	Rough-In Manifold Stand for slab installations		Each
6210707	Manifold Cabinet, for surface mounting	30.5" W x 30.75" H x 4.75" D	Each
6210709	Manifold Cabinet, for recess mounting	30.5" W x 30.75" H x 4.25" D	Each

FASTENERS

Mr PEX® Fasteners and associated tools allow for easy and fast installations of the tubing in slab or suspended applications.



Part#	Description	Type	Unit
7110228	Anchor Clips for foam insulation boards	for 3/8" to 5/8" PEX and PAP Tubing	Box of 900
7110229	Anchor Clips for foam insulation boards	for 3/8" to 5/8" PEX and PAP Tubing	Bag of 50
7110232	Anchor Tool to mount #7110228, 7110229		Each
7110235	Rider Staples for plywood	for 3/8" to 5/8" PEX and PAP Tubing	Box of 500
7110236	Rider Gun to mount #7110235		Each
7110224	2" Tacker Staples for foam insulation boards	for 3/8" to 5/8" PEX and PAP Tubing	Box of 300
7110227	1.25" Tacker Staples for foam insulation boards	for 3/8" to 5/8" PEX and PAP Tubing	Box of 270
7110223	Tacker Tool to mount #7110224, 7110227		Each
7120221	Octa Rail; for mounting 3/8" – 3/4" PEX	Length: 3.3 ft	Bundle of 10
7120222	Holding pin #7120221 to foam board		Bag of 100
7120225	Quip Clip to fasten 1/2" PEX to wire mesh		Bag of 250
7120226	Quip Clip to fasten 5/8" & 3/4" PEX to wire mesh		Bag of 250
7130211	Plastic Bend Support	for 3/8" PEX Tubing	Bag of 10
7130212		for 1/2" PEX Tubing	Bag of 10
7130213		for 5/8" PEX Tubing	Bag of 10
7130214		for 3/4" PEX Tubing	Bag of 10
7130215		for 1" PEX Tubing	Bag of 10

INSTALLATION TOOLS

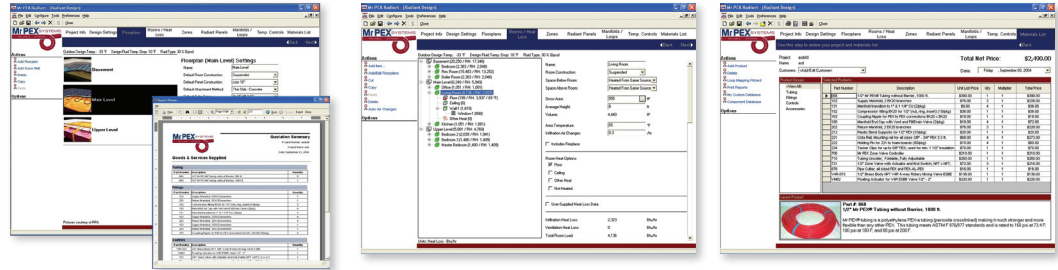
Mr PEX® Installation Tools features tube handling tools for PEX or PEX-AL-PEX as well as prep and press fitting tools for PEX-AL-PEX.



Part#	Description	Type	Unit
8110710	Tubing Uncoiler, fully adjustable and collapsible		Each
8120878	Pipe Cutter, For all sizes PEX and PEX-AL-PEX Tubing		Each
8221882	External Bending Spring for PEX-AL-PEX	1/2"	Each
8220884		3/4"	Each
8220885		1"	Each
8210872	Burring Reamer for PEX-AL-PEX	5/8", 3/4", 1"	Each
8210873		3/8", 1/2", 3/4"	Each
8220874	Bending Tool for PEX-AL-PEX	1/2", 5/8", 3/4", 1"	Each
8230892	Manual Press Tool for PEX-AL-PEX	1/2" - 5/8"	Each
8230893	Insert for Manual Press Tool #8230892	1/2"	Each
8230894		5/8"	Each
8230895	Manual Press Tool for PEX-AL-PEX, w/ inserts	1/2", 3/4", 1"	Each
8230896	Insert for Manual Press Tool #8230895	1/2"	Each
8230897		5/8"	Each
8230898		3/4"	Each
8230899		1"	Each
8243000	Battery Press Tool Basic Kit (no jaws)	for 1/2", 5/8", 3/4", 1"	Each
8243001	Battery Press Tool Basic Kit with 1/2", 3/4" & 1" Jaws	for 1/2", 5/8", 3/4", 1"	Each
8243002	Spare Battery for Press Tool		Each
8243003	Spare Battery Charger for Press Tool		Each
8243016	PAP Press Jaw for part #8243000	1/2"	Each
8243020		5/8"	Each
8243025		3/4"	Each
8243032		1"	Each
8243050	PEX Crimp Jaw (F1807) for part #8243000	1/2"	Each
8243063		5/8"	Each
8243075		3/4"	Each
8243010		1"	Each
8243013		1.25"	Each

MR PEX® RADIANT SOFTWARE

Introducing the new Mr PEX® Radiant software for the design and quotation of Mr PEX® radiant heating and snow melting systems. Mr PEX® Radiant is a valuable time-saving tool, and it's easy-to-use for both beginner and advanced system designers. It will also integrate with LoopCAD®, helping you to complete the entire design package fast.



WARRANTY

LIMITED WARRANTY – Effective March 1, 2009 – Valid for Mr PEX® tubing and Panel Heating Components

Mr PEX® Systems warrants to its "clients" that the Mr PEX® Tubing and Panel Heating Components, used for Panel Heating applications, sold hereunder shall be free from defects in material and workmanship and that the components will conform to specifications stated in Mr PEX® Publications. This Limited Warranty shall expire twenty-five (25) years for the Mr PEX® tubing, five (5) years for DZR Press Fittings and two (2) years for all other components, from date of shipment by Mr PEX® Systems unless otherwise specified in writing. Mr PEX® Systems further warrants that products listed are compatible with Each other, but at the same time we disclaim warranty for claims related to compatibility with non-Mr PEX® products. Components sold under this Limited Warranty must (1) be selected, designed, and installed according to the instructions in Mr PEX® Publications using appropriate trade workmanship and according to the local building code(s), (2) remain in their originally installed location, (3) are connected to appropriate water and power supplies, (4) show no evidence of tampering, mishandling, neglect, accidental damage, modification or repair without the approval of Mr PEX® Systems or damage done to the product by anyone other than Mr PEX® Systems authorized personnel. Mr PEX® Systems' sole obligation hereunder shall be, at its option, to issue credit, repair or replace any component or part thereof which is proved to be other than as warranted. No allowance shall be made to clients for transportation or labor charges unless such charges are authorized in writing in advance by Mr PEX® Systems. Any repairs without the express written consent of Mr PEX® Systems, shall render this Limited Warranty invalid. Warranty claims must be received by Mr PEX® Systems within the applicable warranty period and within thirty (30) days from the time when the cause for the claim occurred or was discovered. Upon receipt of prompt notice of a warranty claim, Mr PEX® Systems shall have ten (10) business days in which to determine whether it acknowledges responsibility for any asserted defects in material or workmanship and the appropriate action to be taken. This Limited Warranty and any claims arising from breach of warranty, or any other claim arising hereunder, shall be governed and construed under the laws of the State of Minnesota. No other persons than Mr PEX® employees have any express or implied authority to bind Mr PEX® to any agreement or warranty of any kind without the express written consent of Mr PEX® Systems.

DISCLAIMER OF WARRANTIES:

MR PEX® SYSTEMS DISCLAIMS ANY WARRANTY NOT PROVIDED HEREIN INCLUDING THE IMPLIED WARRANTY OF MERCHANTABILITY AND IMPLIED WARRANTY OF FITNESS FOR A PARTICULAR PURPOSE. IT IS EXPRESSLY UNDERSTOOD THAT MR PEX® SYSTEMS IS NOT RESPONSIBLE FOR ANY CONSEQUENTIAL OR OTHER DAMAGES THAT MAY ARISE FROM USING MR PEX® SYSTEM COMPONENTS. DAMAGE RESULTING FROM WATER FREEZING IN THE TUBING DOES NOT CONSTITUTE A DEFECT IN MATERIAL OR WORKMANSHIP, AND SHALL NOT BE COVERED BY THIS WARRANTY. MR PEX® TUBING MAY NOT BE STORED IN DIRECT SUNLIGHT FOR ANY PERIOD LONGER THAN THREE WEEKS OR THIS LIMITED WARRANTY BECOMES INVALID. MR PEX® SYSTEMS DISCLAIMS ANY STATUTORY OR IMPLIED WARRANTY OF HABITABILITY. MR PEX® SYSTEMS FURTHER DISCLAIMS ANY RESPONSIBILITY FOR LOSSES, EXPENSES, INCONVENIENCES, SPECIAL, INDIRECT, SECONDARY, INCIDENTAL OR CONSEQUENTIAL DAMAGES ARISING FROM OWNERSHIP OR USE OF THE ARTICLES SOLD HEREUNDER. THERE ARE NO WARRANTIES WHICH EXTEND BEYOND THE FACE HEREOF.

www.mrpexsystems.com

**2613 87th Court W.
Northfield, MN 55057
mrpex@mrpexsystems.com**

**800-716-3406
952-652-2472
Fax: 952-652-2378**

**Sales Office:
763-856-8120
Fax: 763-856-8121
sales@mrpexsystems.com**