

Job Name/Location:

Tag #:

Date:

For: ☐ File ☐ Resubmit

PO No.:

☐ Approval ☐ Other \_\_\_\_\_

Architect:

GC:

Engr:

Mech:

Rep:

(Company)

(Project Manager)



PQWRHDF0

**LMAN095HVT**

Flex Multi-Split ArtCool™ Mirror

9,000 Btu/h Indoor Unit

**Performance:**

Nominal Capacity (Btu/h)	9,000
--------------------------	-------

Cooling Nominal Test Conditions:

Indoor: 80°F DB/67°F WB

Outdoor: 95°F DB/75°F WB

Heating Nominal Test Conditions:

Indoor: 70°F DB/60°F WB

Outdoor: 47°F DB/43°F WB

**Electrical:**

Power Supply (V/Hz/Ø)	208-230/60/1
Rated Amps (A)	0.15

**Piping:**

Liquid Line (in, OD)	1/4
Vapor Line (in, OD)	3/8
Drain OD, ID (in)	13/16, 5/8
Temperature Sensor	Thermistor
Max Length Each Pipe (ft)	82
Max Elevation between ODU and IDU (ft)	49.2
Max Elevation between IDU and IDU (ft)	24.6

**Controls Features:**

- 24-Hour on/off timer
- Auto operation (artificial intelligence)
- Auto restart
- Chaos Swing
- Inverter (variable speed fan)
- Jet Cool
- Plasma air purifying system
- Self-cleaning indoor coil

**Optional Accessories:**

- ☐ PI485 (PMNFP14A0)
- ☐ 7 Day Programmable Controller (PQRCVSL0(QW))
- ☐ Simple Controller with Mode (PQRCVCL0Q(W))
- ☐ AC Smart II (PQCSW320A1E)
- ☐ ACP without Digital I/O (PQCPA11A03)
- ☐ ACP with Digital I/O (PQCPB11A0E)
- ☐ LonWorks Gateway (PQNFB16A1)
- ☐ BACnet Gateway (PQNFB17B0)

**Changeable Front Panel (field installed):**

- ☐ Standard Mirror (PSAPECR10)
- ☐ Art Flower Gold (PSAPECF10)
- ☐ Organic Cream White (PSAPECW10)
- ☐ Snow Flower White (PSAPECT10)

**Entering Mixed Air:**

Cooling (°F DB)	54-73
Heating (°F DB)	61-86

**Unit Data:**

Refrigerant Type	R410A
Refrigerant Control:	EEV
Sound Pressure H/M/L (±3 dB(A))	31/26/22
Primary Filter	Washable Pre-filter
Secondary Filter	Plasma
Net Unit Weight (lbs)	20.9
Shipping Weight (lbs)	24.2
Communication Cable (No x AWG)	4 x 18

**Fan:**

Type	Cross Flow
Quantity	1
Motor/Drive	Brushless Digitally Controlled/Direct
Airflow Rate H/M/L (CFM)	283/247/177
Dehumidification Rate (pts/h)	2.5

**Standard Features:**

- Limited Warranty with LG Certified Installation
  - Limited Two Year Functional Parts Warranty
- Standard Mirror Front Panel

**Notes:**

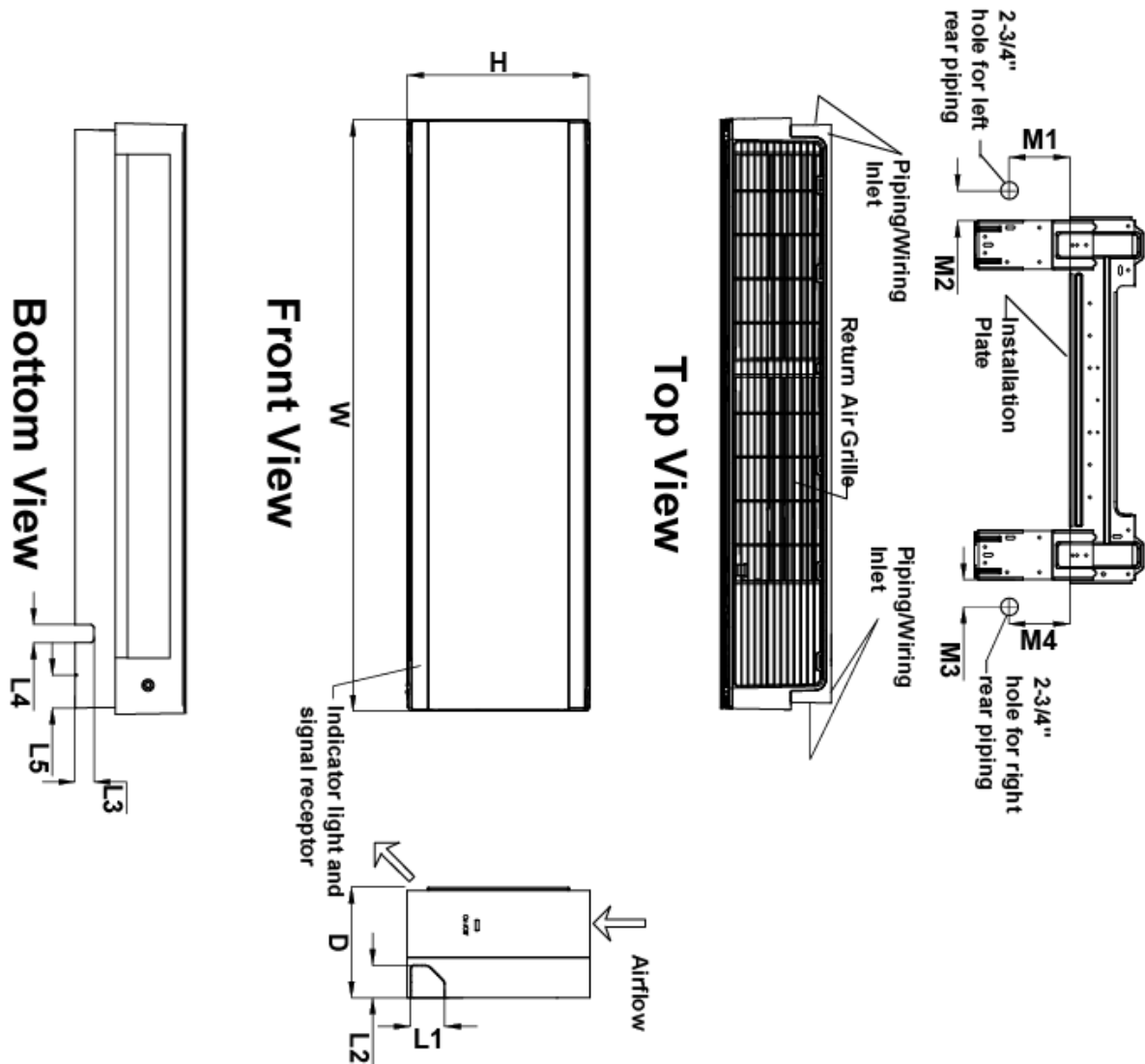
1. See Engineering Manual for sensible and latent capacities.
2. Sound Pressure levels are tested in an anechoic chamber under ISO Standard 1996.
3. All communication cable to be minimum 18 AWG, 2-conductor, stranded, shielded and must comply with applicable local and national code.
4. Power wiring cable size must comply with the applicable local and national code.
5. This unit comes with a dry nitrogen charge.
6. This data is rated 0 ft above sea level, with 24.6 ft of refrigerant line per indoor unit and a 0 ft level difference between outdoor and indoor units. All capacities are net with a combination ratio between 95 – 105%.
7. Must follow installation instructions in the applicable LG installation manual.



LMAN095HVT  
Flex Multi-Split ArtCool™ Mirror  
9,000 Btu/h Indoor Unit



Tag #: \_\_\_\_\_  
Date: \_\_\_\_\_  
PO No.: \_\_\_\_\_



W	36-1/32"
H	11-3/32"
D	6-1/2"
M1	4-11/32"
M2	3-17/32"
M3	2-3/4"
M4	4-11/32"
L1	2-3/32"
L2	2"
L3	1-15/32"
L4	2"
L5	2"

Note - All dimensions have a tolerance of ± 0.25 in.