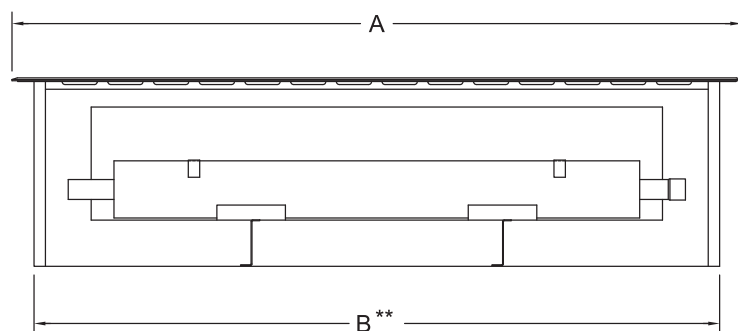


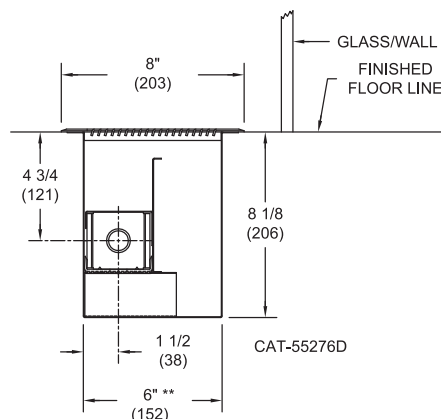
# Beacon/Morris Floor Vector Installation Instructions

BIIFVX-3

## Dimensional Data



MODEL	A	B**
FV-3	40" (1,016)	39" (991)
FV-4	52" (1,321)	51" (1,295)
FV-5	64" (1,626)	63" (1,600)



NOTE: DIMENSIONS IN "( ) " ARE SHOWN IN MILLIMETERS.

## Ratings

Model	Water Flow (GPM)	Average Water Temperature (°F) - Btu/Hr Total							Press. Drop (millinches)	Shipping Weight
		150°	160°	170°	180°	190°	200°	210°		
FV-3 (3 ft.)	1	1245	1435	1640	1840	2045	2250	2455	141	26 lbs.
	4	1320	1515	1725	1940	2160	2375	2590	1575	
FV-4 (4 ft.)	1	1660	1910	2185	2455	2725	3000	3270	188	32 lbs.
	4	1760	2020	2300	2590	2880	3165	3455	2100	
FV-5 (5 ft.)	1	2075	2390	2730	3070	3410	3750	4090	235	41 lbs.
	4	2200	2530	2880	3240	3600	3960	4320	2625	

Note: Based on 65°F entering air temperature.

In the interest of product improvement, we reserve the right to make changes without notice.



260 North Elm Street, Westfield, MA 01085 • Tel: (413) 562-5423 • Fax: (413) 572-3764  
7555 Transmere Drive, Mississauga, Ontario L5S 1L4 Canada • Tel: (905) 672-2991 • Fax: (905) 672-2883  
www.beacon-morris.com





**Preparation:** As near as possible to the doors or windows, frame an opening to fit the heater (see dimensions). Allow approximately 1/4" clearance all around the cabinet, and plan that the flanges will be flush with the finished floor.

With floor joists running parallel to the exposure, wooden headers nailed to the joists may be all that is required.

With joists perpendicular to the exposure, strong support framing will be required in accordance with good building practice. Bore a 2" diameter hole through end frames to allow piping to enter (see dimensions below).

In poured slab floors, either a supported wooden frame or stakes can be used, and an opening should be left to allow concrete to flow under the cabinet. To prevent damage to framing or cabinet during pouring, cut 3 or 4 wood cross braces to fit tight inside the cabinet, and be sure to enclose the top and end holes temporarily to prevent all foreign matter from entering.

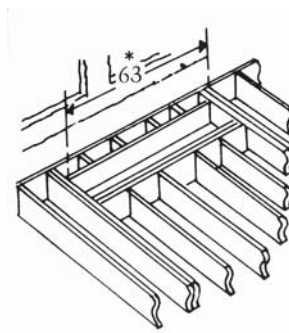
**Installation:** After the frame preparation, remove the floor grille, heating element, cradles and air baffle and put aside in a safe place. Set the cabinet into the framing so that the heating element will be towards the center of the room, the element support bracket should be on the inside of the room. Once properly in place, nail the cabinet securely to the frame or stakes. The metal flanges may be pierced with a sharp punch as required for nailing.

Check the heating element for straightness and fin damage. Set into the cabinet with the cradles centered on the 2 supports. Make sure that it slides freely, and the fin edges do not contact the side of the cabinet.

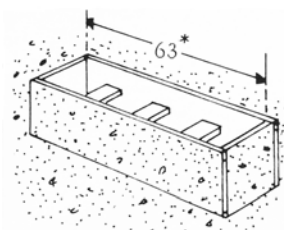
The element connection is 3/4" (nominal) one end, and expanded to fitting size opposite end. Since soldered joints must be made up inside the floor cabinet, proceed as follows: Cut 2 pieces of water tubing approx. 8" long to enter at each end,

using a sweat coupling at the unexpanded end.

Slide the element as far as needed to the left and solder the right end, then slide it to the right and solder the left end. Recenter the element and cradles on the supports. All other pipe connections can now be made externally. In poured floor installations all piping must be properly insulated to allow for protection and expansion.



*wood floor opening*



*masonry floor opening*

*\*Or 51" or 39" depending on model.*

*Add 1/4" to opening for length & width.*

Center the air baffle along the finned area and drop in place with the hooks on the element tubing. When properly in place, the top edge of the hooks should be flush with the top of the fins. This completes the mechanical installation of the heater. The floor grille may be set in place after the flooring has its final finish or carpeting is put down. Carpeting should be brought to the edges of the cabinet opening. The floor register flanges have clearance for carpeting and neatly cover the opening. It is not necessary to fasten the register to the floor, and the home owner should be instructed to remove the register, and the air baffle if necessary, for periodic cleaning.