

2016 **SHARKBITE** CATALOG



SHARKBITE

THE MARK OF QUALITY



Lead-Free/Safety*

All SharkBite fittings are made of Lead Free DZR Brass and exceed ASSE 1061 Section IV, 4.1 Materials-Dezincification (DZR)-ISO 6509 standards.

**Reference Page 26 for additional information.*



Versatile

The ultimate range of push-to-connect plumbing fittings-the SharkBite Connection System has really taken hold with its ability to join Copper, CPVC, PEX or PE-RT pipe in any combination.



Proven and Guaranteed

In 1999, SharkBite became the first push-to-connect fitting to be release into the market. Manufacturing 100% of the components to our fittings and never outsourcing production to a 3rd party, we own the entire manufacturing process. All products are stamped with a manufacturing date and as of 2015, \$75M has been invested towards improvement and additions to our products. With over 1.5M successful SharkBite connections made each week, SharkBite continues to be the market leader in "push-to-connect" products.



No Tools

No glue, solder, clamps or unions required when using SharkBite fittings, providing a quick and easy application that saves installers time, labor, and money.



Flexibility

SharkBite fittings can be rotated even after assembly allowing for easier installation in tight places.



Range

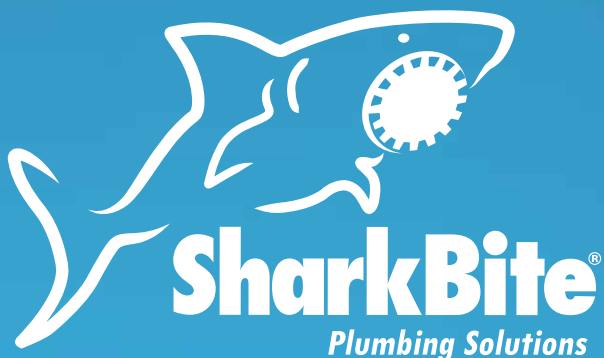
With the largest range of fittings in the industry, SharkBite SKU selection carries sizes ranging from 1/4"-2".

Certifications

- Approved to be used underground and behind walls without access panels
- Fittings are certified to 200 °F (93 °C) max and 200 PSI max
- Design certified to ANSI/NSF-61 and ASSE 1061 product standard for use in potable water and hydronic heating water distribution

CONTENTS

THE SHARKBITE® CONNECTION SYSTEM	3
CORE FITTINGS	3
RADIANT FITTINGS	6
TRANSITION FITTINGS	6
FIRE FITTINGS	7
KITS	7
ADDITIONAL PRODUCTS	8
STOPS & FIXTURE SUPPLY FITTINGS	9
TOOLS	10
SHARKBITE® VALVES	11
BALL VALVES & CHECK VALVES	11
PRESSURE REGULATING VALVES	11
THERMOSTATIC MIXING VALVES	12
THE SHARKBITE® 2XL CONNECTION SYSTEM	12
2XL CORE FITTINGS	12
2XL BALL VALVES	13
2XL TOOLS & PEX STIFFENERS	13
SHARKBITE® PEX BARB FITTINGS	14
PEX BARB CORE FITTINGS	14
PEX FIRE FITTINGS	17
PEX POLY ALLOY FITTINGS	17
PEX BARB STOP & FIXTURE SUPPLY FITTINGS	18
PEX BARB ACCESSORIES	19
PEX BARB TOOLS	19
MADE IN THE USA	20
BENEFITS OF SHARKBITE® PEX	21
SHARKBITE® PEX PIPE	22
POTABLE WATER PEX PIPE	22
SPECIAL APPLICATION PEX PIPE	23
LIMITED WARRANTY	24



Visit us online or on the go
www.sharkbite.com

SHARKBITE

PUSH-TO-CONNECT PRODUCTS

The ultimate range of push-to-connect plumbing fittings—the SharkBite® Connection System has really taken hold with its ability to join Copper, CPVC, PEX or PE-RT pipe in any combination—with no solder, clamps, unions or glue. From residential service & repair to commercial new construction, SharkBite plumbing solutions provide a quick and easy application that saves installers time, labor and money, and the freedom to move on to the next project.

SharkBite continues to develop a hallmark of push-to-connect plumbing solutions for professional contractors and DIYers alike, and also features an extensive range of PEX Pipe in a wide range of colors and sizes to suit specific applications for use with both hot and cold water.

Use for new installation and repair of potable water distribution systems. See Certifications on back cover.



PRODUCT DESCRIPTION	PART NUMBER
THE SHARKBITE® CONNECTION SYSTEM	
CORE FITTINGS	
COUPLINGS	
1/4" (3/8" OD) X 1/4" (3/8" OD)	U004LF
3/8" (1/2" OD) X 3/8" (1/2" OD)	U006LF
1/2" X 1/2"	U008LF
3/4" X 3/4"	U016LF
1" X 1"	U020LF
REDUCING COUPLINGS	
1/4" (3/8" OD) X 1/2" Reducing Lead Free	U050LF
3/8" (1/2" OD) X 1/2" Reducing Lead Free	U009LF
3/4" X 1/2" Reducing	U058LF
1" X 3/4" Reducing	U060LF

SLIP FITTINGS

SharkBite Slip Couplings and Tees are ideal for repairing and tapping into existing rigid pipe lines. The Slip feature ensures the pipe is fully engaged into the fitting when the pipe is in a fixed position. Slip end is only suitable for use with Copper and CPVC pipe.

SLIP COUPLINGS (SLIP END ONLY SUITABLE FOR COPPER AND CPVC)

Slip Couplings are the most efficient way to repair a burst pipe or leak. Slip fittings simply repair by doing the job that two couplings and extra pipe used to do. Only one end of the coupling has a stop, allowing the opposite end to slide freely over the end of a pipe. The fittings can then be released with a disconnect tool and slid back onto the other end of the pipe for a successful connection and leak repair.

1/2" X 1/2"	U3008LF
3/4" X 3/4"	U3016LF
1" X 1"	U3020LF

SLIP TEES (SLIP END ONLY SUITABLE FOR COPPER AND CPVC)

Slip Tees are a great solution for tapping into existing pipe where additional supply lines are needed. Easily add an ice maker or dishwasher line using in conjunction with SharkBite Straight and Angle Stops.

1/2" X 1/2" X 1/2"	U3362LF
3/4" X 3/4" X 3/4"	U3370LF

FEMALE CENTRE SLIP TEES (SLIP END ONLY SUITABLE FOR COPPER AND CPVC)

1/2" X 1/2" X 1/2" FNPT Female Center Lead Free	U3482LF
3/4" X 3/4" X 3/4" FNPT Female Center	U3486LF

SERVICE SLIP TEE ADAPTER (SLIP END ONLY SUITABLE FOR COPPER AND CPVC)

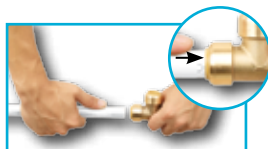
1/2" X 1/2" X 1/2" CTS Tail Adapter Service Line Tee (CTS end inserts into any 1/2" SB fitting)	U4482LF
---	---------



HOW TO INSTALL SHARKBITE PUSH-TO-CONNECT PRODUCTS



CUT:
Cut the pipe square removing rough edges and debris. Mark the pipe to the correct insertion depth.



PUSH:
Push pipe and fitting together up to the depth mark.



DONE.



*Using the disconnect clip, fittings can be easily changed, removed and reused.



PRODUCT DESCRIPTION	PART NUMBER
FEMALE CONNECTORS	
1/4" (3/8" OD) X 1/2" FNPT Reducing	U066LF
3/8" (1/2" OD) X 1/2" FNPT Reducing	U070LF
1/2" X 3/4" FNPT Reducing	U068LF
1/2" X 1/2" FNPT Straight	U072LF
3/4" X 3/4" FNPT Straight	U088LF
3/4" X 1/2" FNPT Bullnose	U092LF
3/4" X 1" FNPT Straight	U086LF
1" X 1" FNPT Straight	U094LF
MALE CONNECTORS	
1/4" X 1/2" MNPT Reducing	U110LF
3/8" (1/2" OD) X 1/2" MNPT Reducing	U118LF
1/2" X 3/4" MNPT Reducing	U116LF
1/2" X 1/2" MNPT Straight	U120LF
3/4" X 3/4" MNPT Straight	U134LF
3/4" X 1/2" MNPT Bullnose	U138LF
3/4" X 1" MNPT Straight	U139LF
1" X 1" MNPT Straight Lead Free	U140LF
1" X 3/4" MNPT Reducing	U142LF
THREADED ADAPTERS	
3/4" CTS X 3/4" FNPT Threaded (CTS end inserts into any 3/4" SB fitting)	U766LF
1" CTS X 1" FNPT Threaded (CTS end inserts into any 1" SB fitting)	U772LF
90° ELBOWS	
1/4" (3/8" OD) X 1/4" (3/8" OD)	U244LF
3/8" (1/2" OD) X 3/8" (1/2" OD)	U246LF
1/2" X 1/2"	U248LF
3/4" X 3/4"	U256LF
1" X 1"	U260LF
FEMALE ELBOWS	
1/2" X 1/2" FNPT	U308LF
3/4" X 3/4" FNPT (Utilizes a U766LF thread adapter)	U314LF
MALE ELBOWS	
1/2" X 1/2" MNPT	U280LF
3/4" X 3/4" MNPT	U286LF
REDUCING ELBOWS	
1/2" X 3/8" (1/2" OD)	U272LF
3/4" X 1/2"	U274LF
1" X 3/4"	U278LF

PRODUCT DESCRIPTION	PART NUMBER
DROP-EAR ELBOWS	
3/8" (1/2" OD) X 1/2" FNPT Drop Ear	U332LF
1/2" X 1/2" Drop Ear	U249LF
1/2" X 1/2" FNPT Drop Ear	U334LF
3/4" X 3/4" FNPT Drop Ear	U340LF
HY-EAR EAR ELBOWS	
1/2" X 1/2" Hy-Ear	U335LF
DISHWASHER ELBOWS	
1/4" (3/8" OD) X 3/8" MNPT Dishwasher	U276LF
1/4" (3/8" OD) X 3/4" Garden Hose Nut	U2276LF
1/2" X 3/8" MNPT Dishwasher	U281LF
TEES	
1/4" (3/8" OD) X 1/4" (3/8" OD) X 1/4" (3/8" OD)	U358LF
3/8" (1/2" OD) X 3/8" (1/2" OD) X 3/8" (1/2" OD)	U360LF
1/2" X 1/2" X 1/2"	U362LF
3/4" X 3/4" X 3/4"	U370LF
1" X 1" X 1"	U374LF
REDUCING TEES	
3/8" (1/2" OD) X 3/8" (1/2" OD) X 1/2" Reducing	U364LF
1/2" X 1/2" X 1/4" (3/8" OD) Reducing Lead Free	U359LF
1/2" X 1/2" X 3/8" (1/2" OD) Reducing	U363LF
3/4" X 3/4" X 1/2" Reducing	U412LF
3/4" X 1/2" X 3/4" Reducing	U444LF
3/4" X 1/2" X 1/2" Reducing	U454LF
1" X 1" X 3/4" Reducing	U416LF
FEMALE CENTRE TEES (REFER TO SLIP TEES ON PAGE 3 FOR ADDITIONAL INSTALLATION OPTIONS)	
3/4" X 3/4" X 3/4" FNPT	U462LF
1" X 1" X 1" FNPT	U464LF
END CAPS	
3/8" (1/2" OD)	U512LF
1/2"	U514LF
3/4"	U518LF
1"	U520LF
FITTING REDUCERS (USE TO CONNECT TO SMALLER PIPE SIZES)	
3/8" (1/2" OD) X 1/2" CTS (CTS end inserts into any 1/2" SB fitting)	U719LF
3/8" (1/2" OD) X 3/4" CTS (CTS end inserts into any 3/4" SB fitting)	U721LF
1/2" X 1" CTS (CTS end inserts into any 1" SB fitting)	U722LF
3/4" X 1" CTS (CTS end inserts into any 1" SB fitting)	U724LF
STUB-OUT ELBOWS	
The SharkBite Stub-Out Elbows come with pre-fitted mounting brackets that provide four fixed installation positions on all wooden surfaces (studs, joists and subfloors) by simply rotating or repositioning the mounting bracket.	
1/2" SB X 1/2" Copper Tube 8" Length	U351LFA





PRODUCT DESCRIPTION	PART NUMBER
RADIANT FITTINGS	
RADIANT FITTINGS (NON-POTABLE WATER APPLICATION)	
Non-potable water application fittings are manufactured with standard DZR brass.	
5/8" X 5/8" Coupling	U012
3/4" X 5/8" Reducing Coupling	U057
5/8" X 3/4" MNPT Reducing Adapter	U126
5/8" X 5/8" Elbow	U252
3/4" X 5/8" Elbow	U273
5/8" X 5/8" X 5/8" Tee	U366
5/8" End Stop	U516

TRANSITION FITTINGS	
POLYBUTYLENE TRANSITION COUPLINGS	
1/2" PB X 1/2" SB PB Transition Coupling	U4008LF
3/4" PB X 3/4" SB PB Transition Coupling	U4016LF
PVC SLIP COUPLINGS	
SharkBite PVC transition fittings connect Copper, PEX, CPVC, or PE-RT pipe to PVC pipe (Sch. 40, 80 and 120) without soldering, clamps, unions, or glue.	
1/2" PVC X 1/2" PVC Slip Repair Coupling	UIP3008
3/4" PVC X 3/4" PVC Slip Repair Coupling	UIP3016
1" PVC X 1" PVC Slip Repair Coupling	UIP3020
PVC TRANSITION COUPLINGS	
1/2" CTS X 1/2" PVC Transition Coupling	UIP4008
3/4" CTS X 3/4" PVC Transition Coupling	UIP4016
1" CTS X 1" PVC Transition Coupling	UIP4020
PVC TRANSITION SLIP TEES (SLIP END ONLY SUITABLE FOR COPPER AND CPVC)	
1/2" CTS X 1/2" CTS X 1/2" PVC Transition Slip Tee	UIP363
1/2" PVC X 1/2" PVC X 1/2" CTS Transition Slip Tee	UIP364
3/4" CTS X 3/4" CTS X 3/4" PVC Transition Slip Tee	UIP371
3/4" PVC X 3/4" PVC X 3/4" CTS Transition Slip Tee	UIP372
1" CTS X 1" CTS X 1" PVC Transition Slip Tee	UIP375
1" PVC X 1" PVC X 1" CTS Transition Slip Tee	UIP376
PVC MALE ADAPTERS	
1/2" PVC X 1/2" MNPT Male Connector	UIP120
3/4" PVC X 3/4" MNPT Male Connector	UIP134
1" PVC X 1" MNPT Male Connector	UIP140
PVC DEPTH GAUGE AND DISCONNECT CLIPS	
1/2" PVC Depth Gauge and Disconnect Clip	UIP710
3/4" PVC Depth Gauge and Disconnect Clip	UIP712
1" PVC Depth Gauge and Disconnect Clip	UIP714

PRODUCT DESCRIPTION	PART NUMBER
FIRE FITTINGS	
HORIZONTAL TEES	
3/4" x 3/4" SB x 1/2" FNPT	UF12128H
1" x 3/4" SB x 1/2" FNPT	UF16128H
1" x 1" SB x 1/2" FNPT	UF16168H
VERTICAL TEES	
3/4" x 3/4" SB x 1/2" FNPT	UF12128V
1" x 3/4" SB x 1/2" FNPT	UF16128V
1" x 1" SB x 1/2" FNPT	UF16168V
ELBOW UP	
3/4" SB x 1/2" FNPT	UF128U
1" SB x 1/2" FNPT	UF168U
STRAIGHT ADAPTER	
3/4" SB x 1/2" FNPT	UF128S
ANGLED ADAPTER	
3/4" x 3/4" SB x 1/2" FNPT	UF12128A
ELBOWS	
3/4" SB x 1/2" FNPT	UF128L
3/4" SB x 1/2" FNPT	UF128R
1" SB x 1/2" FNPT	UF168L
1" SB x 1/2" FNPT	UF168R

KITS	
WATER HEATER INSTALLATION KITS (KITS INCLUDE 2 SHARKBITE CONNECTOR FITTINGS AND A DISCONNECT CLIP)	
1/2" X 3/4" FNPT	22604LF
3/4" X 3/4" FNPT	22441LF
CONTRACTOR KITS (KIT INCLUDES ORANGE TOOLBOX)	
These SharkBite Kits include a variety of push-to-connect fittings, disconnect tongs and clips, and a sturdy case for storage and transport.	
Contractor Kit: 2 each (U008LF, U016LF, U058LF, U072LF, U088LF, U120LF, U134LF, U248LF, U256LF) and 1 each (U362LF, U370LF, U514LF, U518LF, U710, U711, U713 and U702)	22486LF
Contractor Tool Box Only	U3001A
FAUCET KIT	
Faucet kits come with 2 faucet connectors, 2 straight or angle stops and 2 coils of 5' 1/4" PEX Pipe.	
Faucet Kit in Retail Bag	25087
TOILET KIT	
Toilet kits come with 1 toilet connector, 1 straight or angle stop and 1 coil of 5' 1/4" PEX Pipe.	
Toilet Kit in Retail Bag	25088
ICE MAKER CONNECTION KIT	
Ice Maker Kit in Retail Bag	25024
ICE MAKER OUTLET BOX KIT	
1/2" SB X 1/8" Compression Ice Maker Outlet Box	25096
1/2" SB X 1/8" Compression Ice Maker Outlet Box With Water Hammer Arrestor	25097
WASHING MACHINE OUTLET BOX KIT	
1/2" SB X 3/4" MHT Washing Machine Outlet Box	25098
1/2" SB X 3/4" MHT Washing Machine Outlet Box With Water Hammer Arrestor	25099





PRODUCT DESCRIPTION	PART NUMBER
ADDITIONAL PRODUCTS	
MANIFOLDS WITH PUSH-TO-CONNECT BRANCHES	
Manifolds are traditionally used in PEX systems, but this SharkBite manifold will allow easy incorporation into Copper or CPVC systems. Use SharkBite push-to-connect fittings to install these manifolds anywhere in a plumbing system. All manifolds have a 1" trunk with 3/4" tube inlets and outlets and 1/2" push-to-connect ports (2" on center).	
3 Port - Open 1" trunk, 3/4" X 3/4", 3 - 1/2" branches 2" on center	22995LF
3 Port - Closed 1" trunk, 3/4" X Spun Closed, 3 - 1/2" branches 2" on center	22996LF
4 Port - Open 1" trunk, 3/4" X 3/4", 4 - 1/2" branches 2" on center	22997LF
4 Port - Closed 1" trunk, 3/4" X Spun Closed, 4 - 1/2" branches 2" on center	22998LF
WATER HAMMER ARRESTORS	
Proves maintenance free, continuous protection against water hammer. The arrestor can be positioned vertically or horizontally and installed in seconds using SharkBite connectors.	
1/2" Residential	22630LF
1/2" Commercial	22631LF
3/4" Residential	22632LF
1" Commercial	22633LF

FLEXIBLE CONNECTORS

The SharkBite Flexible Connectors are used in residential and commercial applications to easily connect pipe in any combination. The connectors are EPDM knitted with braided stainless steel. The SharkBite fitting allows the installer to connect to Copper, CPVC and PEX Pipe eliminating the need for an additional transition fitting.

BRAIDED FLEXIBLE WATER HEATER CONNECTORS

The SharkBite Water Heater Connectors are used in residential and commercial applications to connect the hot and cold supply lines to the water heater. The connectors are available in 12", 15", 18" and 24" lengths (with and without ball valve).

1/2" X 3/4" FIP, 12" Stainless Steel Braided Water Heater Connector	U3068FLEX12LF
1/2" X 3/4" FIP, 15" Stainless Steel Braided Water Heater Connector	U3068FLEX15LF
1/2" X 3/4" FIP, 18" Stainless Steel Braided Water Heater Connector	U3068FLEX18LF
1/2" X 3/4" FIP, 24" Stainless Steel Braided Water Heater Connector	U3068FLEX24LF
3/4" X 3/4" FIP, 12" Stainless Steel Braided Water Heater Connector	U3088FLEX12LF
3/4" X 3/4" FIP, 15" Stainless Steel Braided Water Heater Connector	U3088FLEX15LF
3/4" X 3/4" FIP, 18" Stainless Steel Braided Water Heater Connector	U3088FLEX18LF
3/4" X 3/4" FIP, 24" Stainless Steel Braided Water Heater Connector	U3088FLEX24LF

CORRUGATED STAINLESS STEEL WATER HEATER CONNECTORS

3/4" x 3/4" FIP, 18" Stainless Steel Corrugated Water Heater Connector	SS3088FLEX18LF
3/4" x 3/4" FIP, 24" Stainless Steel Corrugated Water Heater Connector	SS3088FLEX24LF
3/4" x 1" FIP, 24" Stainless Steel Corrugated Water Heater Connector	SS3086FLEX24LF

BRAIDED FLEXIBLE WATER HEATER CONNECTORS WITH BALL VALVES

1/2" X 3/4" FIP, 18" Stainless Steel Braided Water Heater Connector with Ball Valve	U3068FLEX18BVL
3/4" X 3/4" FIP, 18" Stainless Steel Braided Water Heater Connector with Ball Valve	U3088FLEX18BVL

BRAIDED FLEXIBLE COUPLING HOSES

1/2" X 1/2", 18"	U3008FLEX18LF
3/4" X 3/4", 18"	U3016FLEX18LF

WATER SOFTENER HOSES

The SharkBite Water Softener Hose can be used for connection of new water softeners or replacement of existing connectors. The 3/4" SharkBite x 1" FIP swivel nut connectors makes for quick and easy installation.

3/4" X 1" FIP, 24"	U3086FLEX24LF
--------------------	---------------

PRODUCT DESCRIPTION	PART NUMBER
WATER SOFTENER FITTINGS	
3/4" X 1" FIP	U086LF
PRESSURE GAUGES	
1/2" SB Tee with Pressure Gauge	24436
3/4" SB Tee with Pressure Gauge	24438
1" SB Tee with Pressure Gauge	24440
1/2" CTS Pressure Gauge (inserts into any 1/2" SB fitting)	24442
3/4" CTS Pressure Gauge (inserts into any 3/4" SB fitting)	24444
TEMPERATURE GAUGES	
1/2" SB Tee with Temperature Gauge	24437
3/4" SB Tee with Temperature Gauge	24439
1" SB Tee with Temperature Gauge	24441
1/2" CTS Temperature Gauge (inserts into any 1/2" SB fitting)	24443
3/4" CTS Temperature Gauge (inserts into any 3/4" SB fitting)	24445



STOPS & FIXTURE SUPPLY FITTINGS

Connecting supply lines to fixtures and appliances using these new SharkBite products brings the speed and convenience of push-to-connect connections to the final phase of your plumbing jobs. Regular and chrome plated fittings are now available, including the newest 1/2" X 1/4" (3/8" OD) SharkBite stop valves. Stops in 1/2" X 3/8" or 1/4" compression sizes are also available. With these new SharkBite push-to-connect fittings, stop valves and the 5' lengths or 50' coils of 1/4" (3/8" OD) PEX Pipe, it's easy to make risers the exact length needed for connecting fixtures and appliances. No more problems with flexible lines that are too long or too short.

ANGLE STOPS	
1/2" X 3/8" Compression Angle Stop	23036-0000LF
1/2" X 3/8" Compression Loose Key	24731LF
1/2" X 1/4" (3/8" OD) Angle Stop	23048-0000LF
1/2" X 1/4" (3/8" OD) Loose Key	24733LF
1/2" X 1/4" Compression Angle Stop	23336-0000LF
1/2" X 1/2" Compression Angle Stop	23489
STRAIGHT STOPS	
1/2" X 3/8" Compression Straight Stop	23037-0000LF
1/2" X 3/8" Compression Loose Key	24732LF
1/2" X 1/4" (3/8" OD) Straight Stop	23049-0000LF
1/2" X 1/4" (3/8" OD) Loose Key	24734LF
1/2" X 1/4" Compression Straight Stop	23337-0000LF
1/2" X 1/2" Compression Straight Stop	23490
TEE STOPS	
1/2" X 1/2" X 1/4" Compression	24983
1/2" X 1/2" X 3/8" Compression	24984
3/4" X 3/4" X 1/4" Compression	24985
3/4" X 3/4" X 3/8" Compression	24986
1/2" X 1/2" X 1/4" (3/8" OD) SB	24987





PRODUCT DESCRIPTION	PART NUMBER
DUAL TEE STOP VALVE ADAPTERS Insert onto Stub-Out then fit any of the eight SharkBite Stop Valves to create any combination desired.	
1/2" CTS X 1/2" CTS X 1/2" Dual Tee Stop Valve Adapter Lead Free (CTS ends insert into any 1/2" SB fitting. Recommended use with Angle/Straight Stops.)	U782LF
STOP VALVE CONNECTORS	
1/4" (3/8" OD) X 3/8" Compression Stop Valve Connector Lead Free (Converts 3/8" comp stop to SharkBite)	U3523LF
1/4" (3/8" OD) X 1/4" Compression Nut Lead Free	U3524LF
STOP VALVE TEE ADAPTERS	
1/4" (3/8" OD) X 1/4" (3/8" OD) X 3/8" Compression Stop Valve Tee Adapter Lead Free	U3358LF
1/4" (3/8" OD) X 1/4" (3/8" OD) X 1/4" (3/8" OD) Tube Stop Valve Tee Adapter Lead Free	U4358LF
FAUCET CONNECTORS	
1/4" (3/8" OD) X 1/2" Threaded Faucet Connector Lead Free	U3525LF
TOILET CONNECTORS	
1/4" (3/8" OD) X 7/8" Ballcock Threads Toilet Connector Lead Free	U3531LF
1/4" (3/8" OD) X 7/8" Ballcock Threads Toilet Elbow Lead Free	U3537LF

TOOLS	
DEBURR & GAUGE TOOL	
Deburr & Gauge Tool (Use for 1/4", 3/8", 1/2", 5/8", 3/4" and 1" Copper)	U702
Shark Safe Deburr & Gauge Tool (Use with 1-1/4", 1-1/2", 2")	SBG03
DISCONNECT CLIPS	
1/4" Disconnect Clip	U706
3/8" Disconnect Clip	U708
1/2" Disconnect Clip	U710
5/8" Disconnect Clip	U3712
3/4" Disconnect Clip	U712
1" Disconnect Clip	U714
DISCONNECT TONGS	
1/2" Disconnect Tong	U711
3/4" Disconnect Tong	U713
1" Disconnect Tong	U715

PRODUCT DESCRIPTION	PART NUMBER
SHARKBITE® VALVES	
BALL VALVES & CHECK VALVES	
BALL VALVES SHARKBITE X SHARKBITE	
1/2" X 1/2" Lead Free	22222-0000LF
3/4" X 3/4" Lead Free	22185-0000LF
1" X 1" Lead Free	22223-0000LF
BALL VALVES SHARKBITE X FNPT	
1/2" SharkBite X 1/2" FNPT Lead Free	22182-0000LF
3/4" SharkBite X 3/4" FNPT Lead Free	22186-0000LF
1" SharkBite X 1" FNPT Lead Free	22187-0000LF
BALL VALVES WITH DRAIN/VENT	
1/2" with drain Lead Free	22304-0000LF
3/4" with drain Lead Free	22305-0000LF
1" with drain Lead Free	22306-0000LF
CHECK VALVES	
1/2" X 1/2" Lead Free	U2008-0000LF
3/4" X 3/4" Lead Free	U2016-0000LF
1" X 1" Lead Free	U2020-0000LF
SLIP BALL VALVES Slip Run is only suitable for Copper and CPVC.	
1/2" Lead Free	24735LF
3/4" Lead Free	24736LF
1" Lead Free	24737LF



PRESSURE REGULATING VALVES

The innovative, labor reducing EB25 and the EB45 pressure reducing regulators are available with double union and direct SharkBite connectors. The EB25 is set at 45 psi and features a twist cap with a numerical pressure indicator for easy one-man adjustment. The EB45 is factory set at 45 or 60 psi and is adjustable to 10-70 psi.

EB45 SHARKBITE CONNECTIONS	
1/2" EB45-DSB Direct SharkBite Lead Free	23807-0045
1/2" EB45-DUSB Double Union SharkBite Lead Free	23893-0045
3/4" EB45-DSB Direct SharkBite Lead Free	23808-0045
3/4" EB45-DUSB Double Union SharkBite Lead Free	23894-0045
3/4" EB-45 Double Union SharkBite (60 psi Setting) Lead Free	23896-0060
3/4" EB45-DUSB Double Union SharkBite with Gauge Port Lead Free	24449-0045
1" EB45-DSB Direct SharkBite Lead Free	22675-0045
1" EB45-DUSB Double Union SharkBite Lead Free	23358-0045
1" EB45-DUSB Double Union SharkBite (60 psi Setting) Lead Free	23945-0060
EB45 SHARKBITE CONNECTIONS W/ SLIP FEATURE	
1/2" EB45-SDSB Slip Feature Direct SharkBite Lead Free	24383-0045
3/4" EB45-SDSB Slip Feature Direct SharkBite Lead Free	24384-0045
EB25 SHARKBITE CONNECTIONS	
3/4" EB25-DUSB Double Union SharkBite Lead Free	23955-0045
1" EB25-DUSB Double Union SharkBite Lead Free	23956-0045





PRODUCT DESCRIPTION

PART NUMBER

THERMOSTATIC MIXING VALVES

Direct or double union SharkBite push-to-connect connectors provide a simplified, time and labor saving installation. Heatguard® valves deliver water at a safe 120°F (49°C) or lower from all outlets, while allowing the thermostat to be set at a germ-killing 140°F (60°C) or higher which aids in preventing the growth of legionella bacteria in the water heater. The higher tank temperature means hot water demands can be satisfied longer. Every valve is tested for performance and includes a unique adjuster tool that minimizes tampering with the valve setting. Rugged, simple construction incorporates a precise engineered polymer piston and the latest in thermostatic technology.

HG110-D (ASSE 1070, 1017 & 1069, DISTRIBUTION AND IN-LINE)

1/2" HG110-D with SharkBite Connections Lead Free

24504

3/4" HG110-D with SharkBite Connections Lead Free

24505

HG160 (ASSE 1070 & 1069, IN-LINE)

1/2" HG160 with SharkBite Connections Lead Free

24529

3/4" HG160 with SharkBite Connections Lead Free

24530

THE SHARKBITE® 2XL CONNECTION SYSTEM

2XL CORE FITTINGS

(FOR PEX APPLICATIONS, STIFFENERS ARE SOLD SEPARATELY)

COUPLINGS

1-1/4" X 1-1/4" Coupling Lead Free

SB0135

1-1/2" X 1-1/2" Coupling Lead Free

SB0141

2" X 2" Coupling Lead Free

SB0154

SLIP COUPLINGS (SLIP END ONLY SUITABLE FOR COPPER AND CPVC)

1-1/4" X 1-1/4" SLIP Coupling Lead Free

SB0635

1-1/2" X 1-1/2" SLIP Coupling Lead Free

SB0641

2" X 2" SLIP Coupling Lead Free

SB0654

REDUCING COUPLINGS

1-1/4" X 1" Reducing Coupling Lead Free

SB013528

1-1/2" X 1-1/4" Reducing Coupling Lead Free

SB014135

2" X 1-1/2" Reducing Coupling Lead Free

SB015441

FEMALE CONNECTORS

1-1/4" X 1-1/4" FNPT Lead Free

SB113532F

1-1/2" X 1-1/2" FNPT Lead Free

SB114140F

2" X 2" FNPT Lead Free

SB115450F

MALE CONNECTORS

1-1/4" X 1-1/4" MNPT Lead Free

SB113532M

1-1/2" X 1-1/2" MNPT Lead Free

SB114140M

2" X 2" MNPT Lead Free

SB115450M

90° ELBOWS

1-1/4" X 1-1/4" Elbow 90° Lead Free

SB0235

1-1/2" X 1-1/2" Elbow 90° Lead Free

SB0241

2" X 2" Elbow 90° Lead Free

SB0254

45° ELBOWS

1-1/4" X 1-1/4" Elbow 45° Lead Free

SB0535

1-1/2" X 1-1/2" Elbow 45° Lead Free

SB0541

2" X 2" Elbow 45° Lead Free

SB0554

PRODUCT DESCRIPTION	PART NUMBER
45° STREET ELBOWS	
1-1/4" X 1-1/4" Street Elbow 45° Lead Free	SB0735
1-1/2" X 1-1/2" Street Elbow 45° Lead Free	SB0741
2" X 2" Street Elbow 45° Lead Free	SB0754
SLIP TEES (SLIP END ONLY SUITABLE FOR COPPER AND CPVC)	
1-1/4" X 1-1/4" SLIP Tee Lead Free	SB0335
1-1/2" X 1-1/2" SLIP Tee Lead Free	SB0341
2" X 2" SLIP Tee Lead Free	SB0354
REDUCING SLIP TEES (SLIP END ONLY SUITABLE FOR COPPER AND CPVC)	
1-1/4" X 1-1/4" X 1/2" Reducing Tee Lead Free	SB03353516
1-1/4" X 1-1/4" X 3/4" Reducing Tee Lead Free	SB03353522
1-1/4" X 1-1/4" X 1" Reducing Tee Lead Free	SB03353528
1-1/2" X 1-1/2" X 3/4" Reducing Tee Lead Free	SB03414122
1-1/2" X 1-1/2" X 1" Reducing Tee Lead Free	SB03414128
1-1/2" X 1-1/2" X 1-1/4" Reducing Tee Lead Free	SB03414135
2" X 2" X 1" Reducing Tee Lead Free	SB03545428
2" X 2" X 1-1/4" Reducing Tee Lead Free	SB03545435
2" X 2" X 1-1/2" Reducing Tee Lead Free	SB03545441
END CAPS	
1-1/4" End Cap Lead Free	SB0435
1-1/2" End Cap Lead Free	SB0441
2" End Cap Lead Free	SB0454
2XL BALL VALVES	
BALL VALVES	
SharkBite 1-1/4" Ball Valve Lead Free	SBBV35
SharkBite 1-1/2" Ball Valve Lead Free	SBBV41
SharkBite 2" Ball Valve Lead Free	SBBV54
2XL TOOLS & PEX STIFFENERS	
DEBURR & GAUGE TOOL	
1-1/4", 1-1/2", 2" Deburr & Gauge Tool	SBG03
DE-MOUNT CLIPS	
1-1/4" De-Mount Clip	SBDC35
1-1/2" De-Mount Clip	SBDC41
2" De-Mount Clip	SBDC54
1-1/4", 1-1/2", 2" De-Mount Clip Set	SBDC354154
LARGE DIAMETER PEX STIFFENERS	
1-1/4" PEX Stiffener	SBTL35
1-1/2" PEX Stiffener	SBTL41
2" PEX Stiffener	SBTL54



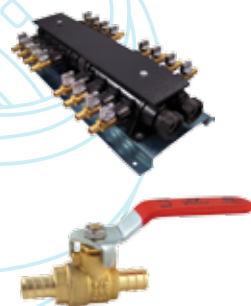
PRODUCT DESCRIPTION	PART NUMBER
SHARKBITE® PEX BARB FITTINGS	
PEX BARB CORE FITTINGS	

The SharkBite PEX/Barb Connection System is the best option for connecting PEX Pipe in water distribution systems when lower material cost is desired. Robustly constructed with Lead Free DZR brass, the SharkBite Barb fittings are corrosion resistant. With a wide range of fittings, manifolds, valves, clamp rings, crimp rings, ball valves and tools available, the SharkBite PEX/Barb Connection System is perfect for your next plumbing project.

COUPLINGS	
3/8" Lead Free	UC006LF
1/2" Lead Free	UC008LF
5/8" Lead Free	UC012LF
3/4" Lead Free	UC016LF
1" Lead Free	UC020LF
REDUCING COUPLINGS	
3/8" X 1/2" Reducing Lead Free	UC009LF
1/2" X 3/4" Reducing Lead Free	UC058LF
3/4" X 5/8" Reducing Lead Free	UC057LF
3/4" X 1" Reducing Lead Free	UC060LF
THREADED FEMALE ADAPTERS	
1/2" X 3/4" FNPT Lead Free	UC068LF
1/2" X 1/2" FNPT Lead Free	UC072LF
3/4" X 3/4" FNPT Lead Free	UC088LF
1" X 1" FNPT Lead Free	UC094LF
THREADED MALE ADAPTERS	
1/2" X 3/4" MNPT Lead Free	UC116LF
3/8" X 1/2" MNPT Lead Free	UC118LF
1/2" X 1/2" MNPT Lead Free	UC120LF
3/4" X 3/4" MNPT Lead Free	UC134LF
3/4" X 1/2" MNPT Lead Free	UC138LF
3/4" X 1" MNPT Lead Free	UC139LF
1" X 1" MNPT Lead Free	UC140LF
1" X 3/4" MNPT Lead Free	UC142LF
SWEAT FEMALE ADAPTERS	
1/2" X 1/2" Female Sweat Adapter Lead Free	UC600LF
3/4" X 3/4" Female Sweat Adapter Lead Free	UC606LF
1" X 1" Female Sweat Adapter Lead Free	UC605LF
SWEAT MALE ADAPTERS	
1/2" X 1/2" Male Sweat Adapter Lead Free	UC607LF
3/4" X 3/4" Male Sweat Adapter Lead Free	UC608LF
POLYBUTYLENE ADAPTERS (WITH PB CRIMP RING)	
3/8" PB Coupling Lead Free	UC4006LF
1/2" PB Coupling Lead Free	UC4008LF
3/4" PB Coupling Lead Free	UC4016LF

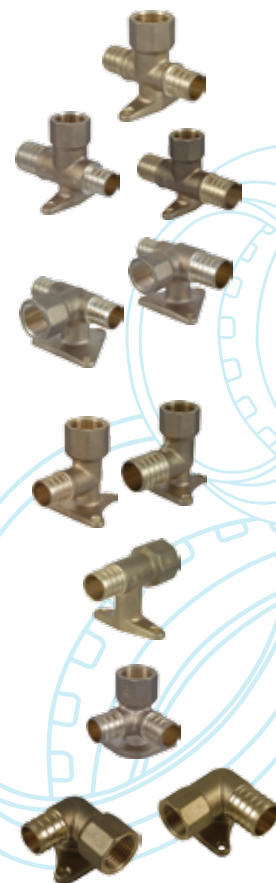
PRODUCT DESCRIPTION	PART NUMBER
ELBOWS	
3/8" X 3/8" Lead Free	UC246LF
1/2" X 1/2" Lead Free	UC248LF
3/4" X 3/4" Lead Free	UC256LF
1" X 1" Lead Free	UC260LF
REDUCING ELBOWS	
1/2" X 3/8" Lead Free	UC272LF
1/2" X 3/4" Lead Free	UC274LF
DROP-EAR ELBOWS	
1/2" X 1/2" FNPT Drop Ear Lead Free	UC334LF
3/4" X 3/4" FNPT Drop Ear Lead Free	UC340LF
3/4" X 1/2" FNPT Drop Ear Lead Free	UC342LF
ADAPTER ELBOWS	
1/2" X 1/2" MNPT Lead Free	UC280LF
1/2" X 3/4" MNPT Lead Free	UC278LF
3/4" X 3/4" MNPT Lead Free	UC286LF
3/4" X 3/4" Female Sweat Lead Free	UC626LF
3/4" X 3/4" Male Sweat Lead Free	UC628LF
TEES	
3/8" X 3/8" X 3/8" Lead Free	UC360LF
1/2" X 1/2" X 1/2" Lead Free	UC362LF
3/4" X 3/4" X 3/4" Lead Free	UC370LF
1" X 1" X 1" Lead Free	UC374LF
BULLNOSE TEES	
1/2" X 1/2" X 3/4" Bull Nose Lead Free	UC408LF
3/4" X 3/4" X 1" Bull Nose Lead Free	UC413LF
REDUCING TEES	
3/8" X 3/8" X 1/2" Reducing Lead Free	UC364LF
1/2" X 3/8" X 3/8" Reducing Lead Free	UC452LF
1/2" X 1/2" X 3/8" Reducing Lead Free	UC363LF
1/2" X 3/8" X 1/2" Reducing Lead Free	UC434LF
3/4" X 3/4" X 3/8" Reducing Lead Free	UC417LF
3/4" X 3/4" X 1/2" Reducing Lead Free	UC412LF
3/4" X 1/2" X 1/2" Reducing Lead Free	UC454LF
3/4" X 1/2" X 3/4" Reducing Lead Free	UC444LF
1" X 3/4" X 3/4" Reducing Lead Free	UC414LF
1" X 1" X 1/2" Reducing Lead Free	UC415LF
1" X 1" X 3/4" Reducing Lead Free	UC416LF
1" X 3/4" X 1" Reducing Lead Free	UC418LF





PRODUCT DESCRIPTION	PART NUMBER
SWIVEL ADAPTERS	
3/8" X 3/8" FNPT Swivel Adapter Lead Free	UC527LF
1/2" X 1/2" FNPT Swivel Adapter Lead Free	UC526LF
1/2" X 3/4" FNPT Swivel Adapter Lead Free	UC534LF
3/4" X 3/4" FNPT Swivel Adapter Lead Free	UC530LF
3/4" X 1" Swivel Adapter Lead Free	UC529LF
1" X 1" FNPT Swivel Adapter Lead Free	UC594LF
SWIVEL ELBOWS	
3/8" X 1/2" FNPT Swivel Elbow Lead Free	UC531LF
1/2" X 1/2" FNPT Swivel Elbow Lead Free	UC532LF
SWIVEL TOILET CONNECTION ELBOWS	
1/2" X 7/8" Straight Swivel Toilet Connectors Lead Free	UC528LF
3/8" X 7/8" Elbow Swivel Toilet Connectors Lead Free	23068LF
1/2" X 7/8" Elbow Swivel Toilet Connectors Lead Free	23067LF
PLUGS	
3/8" Lead Free	UC512LF
1/2" Lead Free	UC514LF
3/4" Lead Free	UC518LF
1" Lead Free	UC520LF
COPPER STUB OUT ELBOWS (ALL COPPER STUB OUT ELBOWS ARE LEAD FREE)	
1/2" X Closed (4" X 8") Lead Free	22791
3/8" X 1/2" (4" X 4") Lead Free	23069
1/2" X 1/2" (4" X 4") Lead Free	23070
COPPER MANIFOLDS WITH BARB BRANCHES (1" TRUNK WITH 3/4" BARB INLETS & OUTLETS AND 1/2" BARB PORTS – 2" ON CENTER)	
3 Port Closed Lead Free	22783
3 Port Open Lead Free	22784
4 Port Closed Lead Free	22785
4 Port Open Lead Free	22786
6 Port Closed Lead Free	22787
6 Port Open Lead Free	22788
8 Port Closed Lead Free	22789
8 Port Open Lead Free	22790
BARB MANIFOLDS WITH BALL VALVES	
Manifold 16 Port with Ball Valves Lead Free	RM22716
Manifold 20 Port with Ball Valves Lead Free	RM22720
Manifold 24 Port with Ball Valves Lead Free	RM22724
BARB BALL VALVES	
1/2" Lead Free	22461LF
3/4" Lead Free	22462LF
1" Lead Free	22463LF

PRODUCT DESCRIPTION	PART NUMBER
PEX FIRE FITTINGS	
HORIZONTAL TEES	
3/4" x 3/4" SB x 1/2" FNPT	UCF12128H
1" x 3/4" SB x 1/2" FNPT	UCF16128H
1" x 1" SB x 1/2" FNPT	UCF16168H
VERTICAL TEES	
3/4" x 3/4" SB x 1/2" FNPT	UCF12128V
1" x 3/4" SB x 1/2" FNPT	UCF16128V
1" x 1" SB x 1/2" FNPT	UCF16168V
ELBOW UP	
3/4" SB x 1/2" FNPT	UCF128U
1" SB x 1/2" FNPT	UCF168U
STRAIGHT ADAPTER	
3/4" SB x 1/2" FNPT	UCF128S
ANGLED ADAPTER	
3/4" x 3/4" SB x 1/2" FNPT	UCF12128A
ELBOWS	
3/4" SB x 1/2" FNPT	UCF128L
3/4" SB x 1/2" FNPT	UCF128R
1" SB x 1/2" FNPT	UCF168L
1" SB x 1/2" FNPT	UCF168R

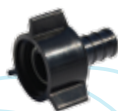


PEX POLY ALLOY FITTINGS

The SharkBite PEX Poly Alloy Fittings range is an advanced plumbing solution when corrosion may effect DZR Brass products.

COUPLINGS	
1/2" Straight Coupling Lead Free	UP008
3/4" Straight Coupling Lead Free	UP016
1" Straight Coupling Lead Free	UP020
REDUCING COUPLINGS	
3/4" X 1/2" Reducing Coupling Lead Free	UP058
1" X 3/4" Reducing Coupling Lead Free	UP060
CONNECTORS	
1/2" X 1/2" MNPT Straight Connector Lead Free	UP120
3/4" X 3/4" MNPT Straight Connector Lead Free	UP134
1" X 1" MNPT Straight Connector Lead Free	UP140
REDUCING CONNECTORS	
3/4" X 1/2" MNPT Reducing Connector Lead Free	UP138
ELBOWS	
1/2" Elbow Lead Free	UP248
3/4" Elbow Lead Free	UP256
1" Elbow Lead Free	UP260





PRODUCT DESCRIPTION	PART NUMBER
MALE ELBOWS	
1/2" X 1/2" MNPT Elbow Lead Free	UP280
REDUCING ELBOWS	
3/4" X 1/2" Elbow Lead Free	UP274
TEES	
3/8" Tee Lead Free	UP360
1/2" Tee Lead Free	UP362
3/4" Tee Lead Free	UP370
1" Tee Lead Free	UP374
REDUCING TEES	
1/2" X 1/2" X 3/4" Tee Lead Free	UP408
3/4" X 3/4" X 1/2" Tee Lead Free	UP412
3/4" X 1/2" X 3/4" Tee Lead Free	UP444
3/4" X 1/2" X 1/2" Tee Lead Free	UP454
1" X 3/4" X 3/4" Tee Lead Free	UP414
1" X 1" X 1/2" Tee Lead Free	UP415
1" X 1" X 3/4" Tee Lead Free	UP416
PLUGS	
1/2" Plug Lead Free	UP514
3/4" Plug Lead Free	UP518
1" Plug Lead Free	UP520
SWIVEL ADAPTERS	
1/2" Female Swivel Adapter Lead Free	UP526
3/8" Female Swivel Adapter Lead Free	UP527
1/2" X 1/2" Swivel Elbow Adapter Lead Free	UP532

PEX BARB STOP & FIXTURE SUPPLY FITTINGS	
PEX CHROME PLATED 1/4 TURN ANGLE STOPS	
1/2" X 3/8" OD Compression Angle Stop (Quarter Turn) Lead Free	23058LF
1/2" X 1/4" OD Compression Angle Stop (Quarter Turn) Lead Free	23056LF
PEX CHROME PLATED 1/4 TURN STRAIGHT STOPS	
3/8" X 3/8" Straight Stop (Quarter Turn) Lead Free	23382LF
1/2" X 3/8" OD Compression Straight Stop (Quarter Turn) Lead Free	23057LF
PEX CHROME PLATED STRAIGHT STOPS	
1/2" X 3/8" Compression Straight Stop Lead Free	23059LF
1/2" X 3/8" Straight Stop Lead Free	23062LF
1/2" X 1/2" MPT Straight Stop Lead Free	23061LF
1/2" X 1/2" Straight Stop Lead Free	23063LF
PEX CHROME PLATED ANGLE STOPS	
1/2" X 3/8" Compression Angle Stop Lead Free	23060LF
1/2" X 3/4" MHT Angle Stop Lead Free	23064LF



PRODUCT DESCRIPTION	PART NUMBER
PEX BARB ACCESSORIES	
CLAMP RINGS (STAINLESS STEEL)	
3/8"	UC952
1/2"	UC953
5/8"	UC954
3/4"	UC955
1"	UC956
CRIMP RINGS (COPPER)	
3/8"	23101
1/2"	23102
3/4"	23103
1"	23104
PEX BEND SUPPORTS, SUSPENSION CLAMPS AND INSULATORS	
3/8" J Hook Pex Pipe Clamp	23065
1/2" J Hook Pex Pipe Clamp	23220
3/4" J Hook Pex Pipe Clamp	23221
1/2" Insulated Suspension Clamp	23071A10
3/4" Insulated Suspension Clamp	23072A10
1" Insulated Suspension Clamp	23073A10
1/2" Pipe Insulator	23074A10
3/4" Pipe Insulator	23075A10
1" Pipe Insulator	23076A10
1/2" Polymer Bend Support with mounting bracket	23050
3/4" Polymer Bend Support	23051
1/2" Metal Pipe Support	23053
3/4" Metal Pipe Support	23054

PEX BARB TOOLS

SharkBite PEX/Barb tools provide everything needed to ensure a dependable trouble-free installation or repair of PEX/Barb Connection Systems. From our PEX crimp tool to our plastic pipe cutters, our line of rugged tools offer everything needed to cut, secure or remove PEX Pipe.

PEX CRIMP TOOLS	
3/8" Large PEX Crimp Tool	23077
1/2", 3/4" PEX Combo Crimp Tool	23251
3/8", 1/2", 3/4" PEX Pocket Crimp Tool	23383
PEX CRIMP TOOL KITS	
3/8", 1/2", 3/4", 1" PEX Crimp Ring Tool Kit	23100
CRIMP RING GAUGES	
3/8", 1/2", 3/4" PEX Crimp Ring Gauge	23080
PEX CLAMP TOOLS	
PEX Clamp Tool One-hand Operation	UC961
PEX Clamp Tool Standard Handles	23081
PEX PIPE CUTTERS	
PEX Pipe Cutter	U701
CRIMP RING REMOVAL TOOL	
PEX Crimp Ring Removal Tool	23055
PEX DECOILER	
PEX Decoiler	UFH034



MADE IN THE USA

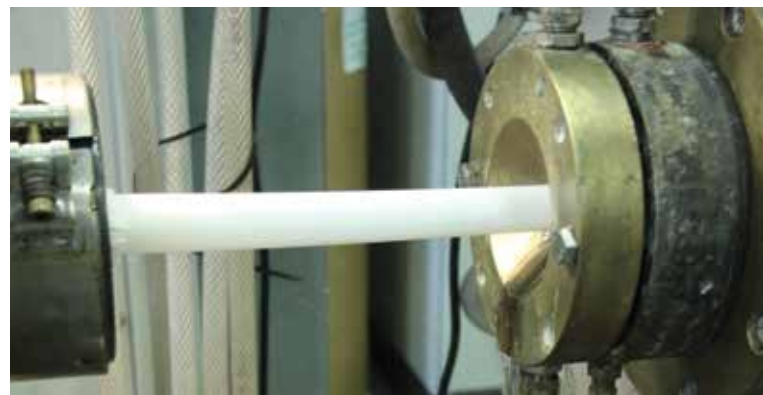
SharkBite® PEX Pipe is an cost effective piping solution approved for use in both hot and cold plumbing installations. Meeting the highest chlorine resistance standards and utilizing the most energy efficient manufacturing processes, our PEX Pipe is proudly produced in Alabama. We own our manufacturing process from start to finish, so every piece of SharkBite PEX Pipe is guaranteed from concept to delivery.

PEX Pipe was introduced to North America in 1984 based on European market success, and was tested extensively for durability and material performance. All USA-installed PEX Pipe must meet the qualification requirements as specified in the ASTM PEX Standards. SharkBite PEX Pipe can bend up to six times the outside diameter of the pipe—which is the maximum bend radius recommended by PEX Pipe manufacturers.

SharkBite PEX Pipe can be used in a variety of applications including:

- **Fire suppression systems (residential fire sprinklers)**
- **Municipal water service pipe for use in underground applications**
- **Radiant heating systems for suspended floor systems or in slab construction**
- **Snow and ice melt systems for sidewalks, driveways, entrances, and ramps**
- **Turf conditioning for greenhouses, golf courses, and sports fields**
- **Water reuse and reclamations systems**

Discover the flexibility of SharkBite PEX Pipe.



Benefits of SharkBite® PEX



Health/Safety

No glue, solder, or solvents required for the connection process, which keeps potentially dangerous chemicals out of plumbing systems. Additionally, SharkBite PEX Pipe eliminates the need for open flames in the house that could be a potential fire hazard. There is no risk of copper traces in water from breakdown of pipe that has been linked to heart disease and Alzheimer's.



Versatile

SharkBite PEX Pipe can be installed in dry or wet conditions. SharkBite PEX Pipe can lend itself to many applications due to its physical properties of flexibility, reliability and installation ease such as hydronic heating, fire protection, etc.



Chlorine Resistance

SharkBite PEX Pipe is tested to the highest level of chlorine resistance standards, testing at 100% chlorine at 140°F.



Proven and Guaranteed

SharkBite PEX Pipe has been around for more than 35 years with over 12 Billion feet of tubing installed worldwide.



Freeze Resistant

SharkBite PEX Pipe is freeze resistant as the pipe can expand and contract as water freezes and thaws within the pipe.



Flexibility

Able to bend pipe around corners which removes the need for 45° or 90° elbows in certain situations. SharkBite's new coiling process increases the flexibility of our coiled pipe even more.



Cost Effective

SharkBite PEX Pipe is substantially more cost effective than Copper pipe—SharkBite PEX Pipe costs a third of the price of Copper. SharkBite PEX Pipe is a fixed cost as prices don't fluctuate daily like Copper pipe.

PROUDLY AMERICAN MADE

SHARKBITE PEX – CERTIFICATIONS



NSF 14/61



ASTM F 877



AWWA C904



ASTM F 876



CSA B137.5

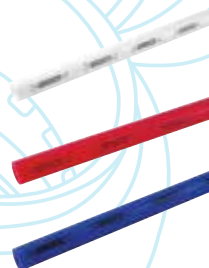


UL 1821

PRODUCT DESCRIPTION	PART NUMBER	PART NUMBER	PART NUMBER
SHARKBITE® PEX PIPE			

SharkBite PEX Pipe is a cross-linked polyethylene pipe for a wide range of residential and commercial plumbing applications. Manufactured without an oxygen barrier for potable water systems and with an oxygen barrier for radiant floor and hydronic heating applications. A repeating SharkBite imprint pattern provides a visual aid to determine if the pipe has been inserted all the way into the SharkBite Push-to-Connect Fitting. This feature only works if the pipe is cut between the SharkBite imprint pattern.

APPROVALS: The SharkBite pipe with and without oxygen barrier is approved for use in all model codes in the US and Canada for use in hydronic and potable water systems and is certified to the following standards: ASTM F876, ASTM F877, CSA B137.5 and AWWA C904.



POTABLE WATER PEX PIPE

PEX PIPE (COILS)	WHITE	RED	BLUE
1/4" (3/8" OD) 50' Coil Pipe	U850W50		
3/8" 50' Coil Pipe	U855W50		
3/8" 100' Coil Pipe	U855W100	U855R100	U855B100
1/2" 25' Coil Pipe	U860W25W	U860R25W	U860B25W
1/2" 50' Coil Pipe	U860W50W	U860R50W	U860B50W
1/2" 100' Coil Pipe	U860W100W	U860R100W	U860B100W
1/2" 300' Coil Pipe	U860W300W	U860R300W	U860B300W
1/2" 500' Coil Pipe	U860W500W	U860R500W	U860B500W
1/2" 1000' Coil Pipe	U860W1000W	U860R1000W	U860B1000W
3/4" 25' Coil Pipe	U870W25W	U870R25W	U870B25W
3/4" 50' Coil Pipe	U870W50W	U870R50W	U870B50W
3/4" 100' Coil Pipe	U870W100W	U870R100W	U870B100W
3/4" 300' Coil Pipe	U870W300W	U870R300W	U870B300W
3/4" 500' Coil Pipe	U870W500W	U870R500W	U870B500W
1" 100' Coil Pipe	U880W100W	U880R100W	U880B100W
1" 300' Coil Pipe	U880W300W	U880R300W	U880B300W
1" 500' Coil Pipe	U880W500W	U880R500W	U880B500W
1-1/4" 100' Coil Pipe	U885W100		
1-1/2" 100' Coil Pipe	U890W100		
2" 100' Coil Pipe	U895W100		
PEX PIPE (STRAIGHT LENGTHS)	WHITE	RED	BLUE
1/4" (3/8" OD) 5' Length Pipe	U850W5		
3/8" 5' Length Pipe	U855W5		
3/8" 10' Length Pipe	U855W10		
1/2" 5' Length Pipe	U860W5	U860R5	U860B5
1/2" 10' Length Pipe	U860W10	U860R10	U860B10
1/2" 20' Length Pipe	U860W20	U860R20	U860B20
3/4" 5' Length Pipe	U870W5	U870R5	U870B5
3/4" 10' Length Pipe	U870W10	U870R10	U870B10
3/4" 20' Length Pipe	U870W20	U870R20	U870B20
1" 5' Length Pipe	U880W5	U880R5	U880B5
1" 10' Length Pipe	U880W10	U880R10	U880B10
1" 20' Length Pipe	U880W20	U880R20	U880B20
1-1/4" 20' Length Pipe	U885W20		
1-1/2" 20' Length Pipe	U890W20		
2" 20' Length Pipe	U895W20		

PRODUCT DESCRIPTION	PART NUMBER
SPECIAL APPLICATION PEX PIPE	
RECLAIMED WATER PEX PIPE (FOR USE WITH GRAY WATER, RAINWATER HARVESTING AND RECLAIMED WATER SYSTEMS ONLY. AVAILABLE IN 100 AND 300 FOOT PURPLE COILS RANGING IN SIZE FROM 1/2" – 1".)	
SharkBite Reclaimed Water PEX is cross-linked polyethylene pipe for gray water, rainwater harvesting and reclaimed water systems only. Manufactured with a purple color background, the pipe meets color code requirements of national and state code bodies to clearly identify reclaimed water lines. SharkBite Reclaimed Water PEX is manufactured and is available in 1/2" to 1".	
1/2" 100' Coil Purple Pipe	U860P100
1/2" 300' Coil Purple Pipe	U860P300
3/4" 100' Coil Purple Pipe	U870P100
3/4" 300' Coil Purple Pipe	U870P300
1" 100' Coil Purple Pipe	U880P100
1" 300' Coil Purple Pipe	U880P300
OXYGEN BARRIER PEX PIPE (COILS AVAILABLE IN 100, 300, 500 AND 1000 FOOT COILS RANGING IN SIZE FROM 3/8" – 1".)	
Use for underfloor radiant and hydronic heating applications. The oxygen diffusion barrier is applied to the exterior and limits oxygen permeation through the pipe wall in hydronic heating applications. This prevents corrosion of ferrous metal parts in the heating system.	
3/8" 100' Coil PEX Pipe Orange Color w/ Black Text	U8550100
3/8" 300' Coil PEX Pipe Orange Color w/ Black Text	U8550300
3/8" 500' Coil PEX Pipe Orange Color w/ Black Text	U8550500
1/2" 100' Coil PEX Pipe Orange Color w/ Black Text	U8600100
1/2" 300' Coil PEX Pipe Orange Color w/ Black Text	U8600300
1/2" 500' Coil PEX Pipe Orange Color w/ Black Text	U8600500
1/2" 1000' Coil PEX Pipe Orange Color w/ Black Text	U86001000
5/8" 300' Coil PEX Pipe Orange Color w/ Black Text	U8650300
3/4" 100' Coil PEX Pipe Orange Color w/ Black Text	U8700100
3/4" 300' Coil PEX Pipe Orange Color w/ Black Text	U8700300
3/4" 500' Coil PEX Pipe Orange Color w/ Black Text	U8700500
3/4" 1000' Coil PEX Pipe Orange Color w/ Black Text	U87001000
1" 100' Coil PEX Pipe Orange Color w/ Black Text	U8800100
1" 300' Coil PEX Pipe Orange Color w/ Black Text	U8800300
1" 500' Coil PEX Pipe Orange Color w/ Black Text	U8800500
OXYGEN BARRIER PEX PIPE (STRAIGHT LENGTHS AVAILABLE IN 20 FOOT STICKS RANGING IN SIZE FROM 1/2" – 1".)	
Use for radiant floor and hydronic heating applications. The oxygen diffusion barrier is applied to the exterior and limits oxygen permeation through the pipe wall in hydronic heating applications. This prevents corrosion of ferrous metal parts in the heating system.	
1/2" 20' Length O2 barrier PEX Pipe Orange Color	U860020
3/4" 20' Length O2 barrier PEX Pipe Orange Color	U870020
1" 20' Length O2 barrier PEX Pipe Orange Color	U880020



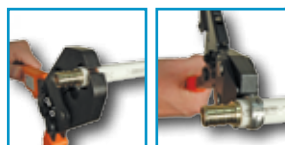
HOW TO INSTALL SHARKBITE PEX BARB PRODUCTS



CUT:
Cut the pipe square removing rough edges and debris.



SET:
Slide the ring over the pipe and insert the fitting. Make sure the ring is 1/8" - 1/4" from the edge of the pipe.



PRESS:
Apply pressure to secure the ring over the pipe and fitting.



DONE.

LIMITED WARRANTY

SharkBite® And Cash Acme® Products

WHAT DOES THIS WARRANTY COVER?

Subject to conditions outlined in this statement, RWC (in the USA, Reliance Worldwide Corporation® and in Canada, Reliance Worldwide Corporation (Canada) Inc.) warrants to owners of real property in the United States and Canada that SharkBite® and Cash Acme® products, when used and installed in accordance with the requirements set forth below, to be free from defects in material and workmanship for the applicable Warranty Period. This Limited Warranty is in effect for installations made after July 1, 2015 and is applicable to product installed in the country it was purchased.

Proof of purchase is required to validate the warranty period; if proof of purchase is not available, the warranty period shall default to the date of manufacture for each product.

WHAT ARE THE CONDITIONS OF THIS WARRANTY?

1. All products must be installed in accordance with all then applicable codes, good plumbing practice, in accordance with any local, state, provincial or federal requirements, and installed in a potable water or radiant heating application unless a non-potable water service is specifically allowed for in the pertinent product literature.
2. The installing contractor must use construction techniques compliant with then applicable codes to install the range of products and use the product(s) within the design parameters specified in any installation guidelines and technical notes for the applicable system. This shall include field pressure testing prior to concealing with concrete or by other means. Failure to install RWC products according to manufacturer's installation instruction will void all applicable warranties and may result in severe water damage.
3. Products must not be installed in a system that may operate at temperatures or at pressures that exceed the printed rating on the product, packaging or installation instructions.
4. Without limiting the foregoing, this Limited Warranty does not apply if the product failure or resulting damage is caused by: (a) evidence of tampering, mishandling, neglect, accidental damage, freeze damage (it is expressly understood that failure as a result of any freezing fluids within the pipes does not constitute a defect in material or workmanship and shall not be covered by this warranty) or unauthorized modifications or repairs that cause damage to RWC warranted products; (b) exposure to harmful, unauthorized, or unanticipated chemicals or substances or corrosive water conditions; (c) exposure to ultraviolet light; (d) faulty installation including failure to follow proper burial instructions; (e) damage from faulty operating conditions; (f) components not manufactured or sold by RWC; and (g) acts of nature such as earthquakes, fire, flood or lightning.
5. Although RWC provides a plumbing system to facilitate a complete installation, other manufacturers pipe and/or fittings may be installed in any given installation provided manufacturing of the pipe and/or fittings demonstrates compliance with the applicable ASTM/CSA standards, and the product has been certified by a recognized third-party testing agency. The RWC product in the given installation will continue to be covered under this Limited Warranty although limits on Warranty Period may apply. RWC will be responsible only for proven defects in material or workmanship in RWC products. Problems in products manufactured by another company should be reported to that manufacturer. RWC does not warrant the integrity or workmanship of the contractor/installer.

HOW DO YOU GET SERVICE?

In order to be eligible for service under this Limited Warranty you must return the defective product within thirty (30) days after detection of alleged failure or defect occurring within applicable warranty period (with shipping charges prepaid) to the original place of purchase. You also must include the model number of the product, the original date of purchase, proof of purchase and the nature of the problem. Products returned without shipping charges prepaid will be refused. For questions or inquiries to the Manufacturer, in the U.S. call 1-877-700-4242 and in Canada 1-888-820-0120.

WHAT WILL RWC DO?

If, after inspection, we find that a product covered by this limited warranty has failed due to a defect in material or workmanship during the specified warranty period, we will repair or replace, at our sole option, free of charge, the defective product during normal working hours and through a place of business as determined by RWC. This shall constitute the sole and exclusive remedy for any defective product.

WHAT DOES THIS LIMITED WARRANTY NOT COVER?

RWC shall not be responsible for any incidental, indirect, contingent, special or consequential damages, including without limitation, lost profits or the cost of repairing or replacing other property which is damaged if these warranted products do not work properly, other costs resulting from labor charges, delays, vandalism, negligence, fouling caused by foreign material, damage from adverse water conditions, adverse chemical environments, or any other circumstances over which RWC has no control. This limitation applies even if RWC could have foreseen or has been advised of the possibility of these damages. This Limited Warranty shall be invalidated by any abuse, misuse, misapplication or improper installation of the product.

HOW DOES STATE/PROVINCIAL LAW APPLY?

Some States/Provinces do not allow limitations on how long an implied warranty lasts, and some States/Provinces do not allow the exclusion or limitation of incidental or consequential damages. Therefore, the above limitations may not apply to you. This Limited Warranty gives you the specific legal rights, and you may have other rights that vary from State/Province to State/Province. You should consult applicable State/Provincial laws to determine your rights.

SO FAR AS IS CONSISTENT WITH APPLICABLE STATE/PROVINCIAL/FEDERAL LAW, THE EXPRESS WARRANTY SET FORTH HEREIN IS THE ONLY WARRANTY GIVEN BY RWC WITH RESPECT TO THE SharkBite® AND CASH ACME® PRODUCTS AND RWC MAKES NO OTHER WARRANTIES, EXPRESSED OR IMPLIED, AND HEREBY SPECIFICALLY DISCLAIMS ALL OTHER WARRANTIES, EXPRESSED OR IMPLIED, INCLUDING BUT NOT LIMITED TO THE IMPLIED WARRANTIES OF MERCHANTABILITY AND FITNESS FOR A PARTICULAR PURPOSE.

HOW LONG DOES THE LIMITED WARRANTY COVERAGE LAST?

CATEGORY	SUBCATEGORY	WARRANTY PERIOD (FROM COMMENCEMENT DATE)	COMMENTS
SharkBite Universal Brass Push-To-Connect Fittings And SharkBite 2XL Large Diameter Push-To-Connect Fittings	Fittings	Twenty-Five (25) Years	Shall be used with: Copper—ASTM B 88 hard drawn Copper tube K, L, and M PEX—ASTM f876/CSA b137.5 CPVC—ASTM D2846 or CSA B137.6 PE-RT—ASTM F2769
	Fittings	Five (5) Years	Shall be used with: HDPE SDR-9 ASTM D2737
SharkBite PEX Pipe	—	Twenty-Five (25) Years	Shall be used with: ASSE 1061, ASTM F1807, ASTM F2098, OR ASTM F2159 FITTINGS
SharkBite Barb Fittings	Brass PEX Barb Fittings/ Copper Manifold	Five (5) Years	Shall be used on: PEX – ASTM F876/CSA B137.5 Copper Crimp Rings – ASTM F1807 Stainless Steel Clamp Rings – ASTM F2098
	Poly PEX Barb Fittings	Five (5) Years	Shall be used on: PEX – ASTM F876/CSA B137.5 Copper Crimp Rings – ASTM F2159
	PEX Barb Tools	One (1) Year	From date of purchase.
Cash Acme® Products	Thermostatic Mixing Valves	Five (5) Years	Shall be installed per installation instructions.
	Other Cash Acme®	Two (2) Years	Shall be installed per installation instructions.
Valves with SharkBite Push-To-Connect Connections	Ball Valves, Supply Hoses, Supply Stops	Two (2) Years	Shall be installed per installation instructions.
Valves with SharkBite Push-To-Connect Connections Continued	Thermostatic Mixing Valves	Five (5) Years	Shall be installed per installation instructions.
	Other Cash Acme®	Two (2) Years	Shall be installed per installation instructions.
	SharkBite Connection	Twenty-Five (25) Years	Shall be used with: Copper - ASTM B 88 HARD DRAWN Copper Tube Type K, L, AND M PEX – ASTM F876/CSA B137.5 CPVC - ASTM D 2846 OR CSA B137.6 PE-RT - ASTM F2769
	SharkBite Connection	Five (5) Years	Shall be used with: HDPE SDR-9 ASTM D2737

SHARKBITE®

PUSH-TO-CONNECT FITTINGS

- The SharkBite push-to-connect range is made from Lead Free DZR Brass and all products were converted as of October 2012.
- The standard material versions of SharkBite push-to-connect fittings are no longer in production, but we do continue to offer a small range of 5/8" fittings in standard material, specifically intended for radiant heating applications. As a running change, these fittings will be converted to Lead Free in due course.
- Our SharkBite 2XL Large Diameter fittings have been Lead Free since their introduction in February 2011.

SHARKBITE

PEX/BARB FITTINGS

- Our PEX/barb range is made from Lead Free DZR brass and all products were converted as of October 2012.
- We have also implemented an extended range of engineered polymer barb fittings.

**LEAD
FREE***



Lead Free
Sin Plomo
Sans Plomb

As of January 2014 a new Federal law came into effect that introduced a similar requirement across the whole country.

More information is available on our websites at:

www.cashacme.com

www.sharkbite.com

In this document, products are marked "Lead Free" or "Non-Potable" as applicable.

- "Lead Free" indicates that a product is suitable for use in an application that is anticipated or intended to deliver water for human consumption.
- "Non-Potable" designates that a product is only suitable for applications that are not anticipated or intended to deliver water for human consumption.

If a product is not marked "Lead Free" or "Non-Potable" it is either:

- Not designed to come into contact with water (e.g. tools, crimp rings, pipe hangers), or
- It is a replacement part or component for a valve or piece of Original Equipment, where it is necessary for the function of that valve or equipment to use the identical specification component with which it was originally designed and certified.

** A device is defined as Lead Free if its wetted surface has a weighted average lead content not exceeding 0.25%.*

Part Number	Page	Part Number	Page	Part Number	Page	Part Number	Page	Part Number	Page
22182-0000LF	11	23103	19	S80435	13	U120LF	4	U8550100	23
22185-0000LF	11	23104	19	S80441	13	U126	6	U8550300	23
22186-0000LF	11	23220	19	S80454	13	U134LF	4	U8550500	23
22187-0000LF	11	23221	19	S80535	12	U138LF	4	U855W5	22
22222-0000LF	11	23251	19	S80541	12	U139LF	4	U855W10	22
22223-0000LF	11	23336-0000LF	9	S80554	12	U140LF	4	U855W50	22
22304-0000LF	11	23337-0000LF	9	S80635	12	U142LF	4	U855W100	22
22305-0000LF	11	23358-0045	11	S80641	12	U244LF	4	U860B5	22
22306-0000LF	11	23382LF	18	S80654	12	U246LF	4	U860B10	22
22441LF	7	23383	19	S80735	13	U248LF	4	U860B20	22
22461LF	16	23489	9	S80741	13	U249LF	5	U860B25W	22
22462LF	16	23490	9	S80754	13	U252	6	U860B50W	22
22463LF	16	23807-0045	11	S8013528	12	U256LF	4	U860B100W	22
22486LF	7	23808-0045	11	S8014135	12	U260LF	4	U860B300W	22
22604LF	7	23893-0045	11	S8015441	12	U272LF	4	U860B500W	22
22630LF	8	23894-0045	11	S8113532F	12	U273	6	U860B1000W	22
22631LF	8	23896-0060	11	S8113532M	12	U274LF	4	U860020	23
22632LF	8	23945-0060	11	S8114140F	12	U276LF	5	U8600100	23
22633LF	8	23955-0045	11	S8114140M	12	U278LF	4	U8600300	23
22675-0045	11	23956-0045	11	S8115450F	12	U280LF	4	U8600500	23
22783	16	24383-0045	11	S8115450M	12	U281LF	5	U86001000	23
22784	16	24384-0045	11	S803353516	13	U286LF	4	U860P100	23
22785	16	24436	9	S803353522	13	U308LF	4	U860P300	23
22786	16	24437	9	S803353528	13	U314LF	4	U860R5	22
22787	16	24438	9	S803414122	13	U332LF	5	U860R10	22
22788	16	24439	9	S803414128	13	U334LF	5	U860R20	22
22789	16	24440	9	S803414135	13	U335LF	5	U860R25W	22
22790	16	24441	9	S803545428	13	U340LF	5	U860R50W	22
22791	16	24442	9	S803545435	13	U351LFA	5	U860R100W	22
22995LF	8	24443	9	S803545441	13	U358LF	5	U860R300W	22
22996LF	8	24444	9	S8BV35	13	U359LF	5	U860R500W	22
22997LF	8	24445	9	S8BV41	13	U360LF	5	U860R1000W	22
22998LF	8	24449-0045	11	S8BV54	13	U362LF	5	U860W5	22
23036-0000LF	9	24504	12	S8DC35	13	U363LF	5	U860W10	22
23037-0000LF	9	24505	12	S8DC41	13	U364LF	5	U860W20	22
23048-0000LF	9	24529	12	S8DC54	13	U366	6	U860W25W	22
23049-0000LF	9	24530	12	S8DC354154	13	U370LF	5	U860W50W	22
23050	19	24731LF	9	S8G03	10	U374LF	5	U860W100W	22
23051	19	24732LF	9	S8G03	13	U412LF	5	U860W300W	22
23053	19	24733LF	9	S8TL35	13	U416LF	5	U860W500W	22
23054	19	24734LF	9	S8TL41	13	U444LF	5	U860W1000W	22
23055	19	24735LF	11	S8TL54	13	U454LF	5	U8650300	23
23056LF	18	24736LF	11	SS3086FLEX24LF	8	U462LF	5	U870B5	22
23057LF	18	24737LF	11	SS3088FLEX18LF	8	U464LF	5	U870B10	22
23058LF	18	24983	9	SS3088FLEX24LF	8	U512LF	5	U870B20	22
23059LF	18	24984	9	U004LF	3	U514LF	5	U870B25W	22
23060LF	18	24985	9	U006LF	3	U516	6	U870B50W	22
23061LF	18	24986	9	U008LF	3	U518LF	5	U870B100W	22
23062LF	18	24987	9	U009LF	3	U520LF	5	U870B300W	22
23063LF	18	25024	7	U012	6	U701	19	U870B500W	22
23064LF	18	25087	7	U016LF	3	U702	10	U870020	23
23065	19	25088	7	U020LF	3	U706	10	U8700100	23
23067LF	16	25096	7	U050LF	3	U708	10	U8700300	23
23068LF	16	25097	7	U057	6	U710	10	U8700500	23
23069	16	25098	7	U058LF	3	U711	10	U87001000	23
23070	16	25099	7	U060LF	3	U712	10	U870P100	23
23071A10	19	RM22716	16	U066LF	4	U713	10	U870P300	23
23072A10	19	RM22720	16	U068LF	4	U714	10	U870R5	22
23073A10	19	RM22724	16	U070LF	4	U715	10	U870R10	22
23074A10	19	S80135	12	U072LF	4	U719LF	5	U870R20	22
23075A10	19	S80141	12	U086LF	4	U721LF	5	U870R25W	22
23076A10	19	S80154	12	U086LF	9	U722LF	5	U870R50W	22
23077	19	S80235	12	U088LF	4	U724LF	5	U870R100W	22
23080	19	S80241	12	U092LF	4	U766LF	4	U870R300W	22
23081	19	S80254	12	U094LF	4	U772LF	4	U870R500W	22
23100	19	S80335	13	U110LF	4	U782LF	10	U870W5	22
23101	19	S80341	13	U116LF	4	U850W5	22	U870W10	22
23102	19	S80354	13	U118LF	4	U850W50	22	U870W20	22

Part Number	Page	Part Number	Page	Part Number	Page	Part Number	Page
U870W25W	22	U3531LF	10	UC528LF	16	UIP3008	6
U870W50W	22	U3537LF	10	UC529LF	16	UIP3016	6
U870W100W	22	U3712	10	UC530LF	16	UIP3020	6
U870W300W	22	U4008LF	6	UC531LF	16	UIP4008	6
U870W500W	22	U4016LF	6	UC532LF	16	UIP4016	6
U880B5	22	U4358LF	10	UC534LF	16	UIP4020	6
U880B10	22	U4482LF	3	UC594LF	16	UP008	17
U880B20	22	UC006LF	14	UC600LF	14	UP016	17
U880B100W	22	UC008LF	14	UC605LF	14	UP020	17
U880B300W	22	UC009LF	14	UC606LF	14	UP058	17
U880B500W	22	UC012LF	14	UC607LF	14	UP060	17
U880O20	23	UC016LF	14	UC608LF	14	UP120	17
U880O100	23	UC020LF	14	UC626LF	15	UP134	17
U880O300	23	UC057LF	14	UC628LF	15	UP138	17
U880O500	23	UC058LF	14	UC952	19	UP140	17
U880P100	23	UC060LF	14	UC953	19	UP248	17
U880P300	23	UC068LF	14	UC954	19	UP256	17
U880R5	22	UC072LF	14	UC955	19	UP260	17
U880R10	22	UC088LF	14	UC956	19	UP274	18
U880R20	22	UC094LF	14	UC961	19	UP280	18
U880R100W	22	UC116LF	14	UC4006LF	14	UP360	18
U880R300W	22	UC118LF	14	UC4008LF	14	UP362	18
U880R500W	22	UC120LF	14	UC4016LF	14	UP370	18
U880W5	22	UC134LF	14	UCF128L	17	UP374	18
U880W10	22	UC138LF	14	UCF128R	17	UP408	18
U880W20	22	UC139LF	14	UCF128S	17	UP412	18
U880W100W	22	UC140LF	14	UCF128U	17	UP414	18
U880W300W	22	UC142LF	14	UCF168L	17	UP415	18
U880W500W	22	UC246LF	15	UCF168R	17	UP416	18
U885W20	22	UC248LF	15	UCF168U	17	UP444	18
U885W100	22	UC256LF	15	UCF12128A	17	UP454	18
U890W20	22	UC260LF	15	UCF12128H	17	UP514	18
U890W100	22	UC272LF	15	UCF12128V	17	UP518	18
U895W20	22	UC274LF	15	UCF16128H	17	UP520	18
U895W100	22	UC278LF	15	UCF16128V	17	UP526	18
U2008-0000LF	11	UC280LF	15	UCF16168H	17	UP527	18
U2016-0000LF	11	UC286LF	15	UCF16168V	17	UP532	18
U2020-0000LF	11	UC334LF	15	UF128L	7		
U2276LF	5	UC340LF	15	UF128R	7		
U3001A	7	UC342LF	15	UF128S	7		
U3008FLEX18LF	8	UC360LF	15	UF128U	7		
U3008LF	3	UC362LF	15	UF168L	7		
U3016FLEX18LF	8	UC363LF	15	UF168R	7		
U3016LF	3	UC364LF	15	UF168U	7		
U3020LF	3	UC370LF	15	UF12128A	7		
U3068FLEX12LF	8	UC374LF	15	UF12128H	7		
U3068FLEX15LF	8	UC408LF	15	UF12128V	7		
U3068FLEX18BVLf	8	UC412LF	15	UF16128H	7		
U3068FLEX18LF	8	UC413LF	15	UF16128V	7		
U3068FLEX24LF	8	UC414LF	15	UF16168H	7		
U3086FLEX24LF	8	UC415LF	15	UF16168V	7		
U3088FLEX12LF	8	UC416LF	15	UFH034	19		
U3088FLEX15LF	8	UC417LF	15	UIP120	6		
U3088FLEX18BVLf	8	UC418LF	15	UIP134	6		
U3088FLEX18LF	8	UC434LF	15	UIP140	6		
U3088FLEX24LF	8	UC444LF	15	UIP363	6		
U3358LF	10	UC452LF	15	UIP364	6		
U3362LF	3	UC454LF	15	UIP371	6		
U3370LF	3	UC512LF	16	UIP372	6		
U3482LF	3	UC514LF	16	UIP375	6		
U3486LF	3	UC518LF	16	UIP376	6		
U3523LF	10	UC520LF	16	UIP710	6		
U3524LF	10	UC526LF	16	UIP712	6		
U3525LF	10	UC527LF	16	UIP714	6		

NOTES

[illegible]

CERTIFICATIONS



The SharkBite push-to-connect fittings have been design certified and listed to ASSE 1061/NSF 61. The SharkBite push-to-connect fittings are listed by IAPMO and are certified for potable and hydronic heating water distribution (Note: Glycol mixture for hydronics is acceptable up to and including 100%). The SharkBite push-to-connect fittings have been certified for underground applications and as a manufactured joint without access panels and they meet UPC, IPC and cUPC requirements. Any SharkBite fitting listed as Lead Free is compliant with NSF/ANSI 372. Please consult with local plumbing codes concerning specific applications.

The SharkBite pipe without oxygen barrier is approved for all model codes in the US and Canada for use in potable water systems and is certified to the following standards: ASTM F 876, ASTM F 877, CSA B137.5 and AWWA C904.

The SharkBite pipe with oxygen barrier is approved for use in all model codes in the US and Canada for use in hydronic and potable water systems and is certified to the following standards: ASTM F 876, ASTM F 877, CSA B137.5 and AWWA C904.

Note: The SharkBite push-to-connect fittings are not approved for use with chrome-plated pipe. SharkBite Polybutylene Couplings are designed to work with ASTM D3309 spec polybutylene, do not install onto damaged or decayed PB pipe.



Reliance Worldwide Corporation

2727 Paces Ferry Road SE
Building 2, Suite 1800
Atlanta, GA 30339

Phone: 1-877-700-4242 • Fax: 1-877-700-4280
www.rwc.com



www.sharkbite.com | www.cashacme.com

Manufactured and Distributed by Reliance Worldwide Corporation