

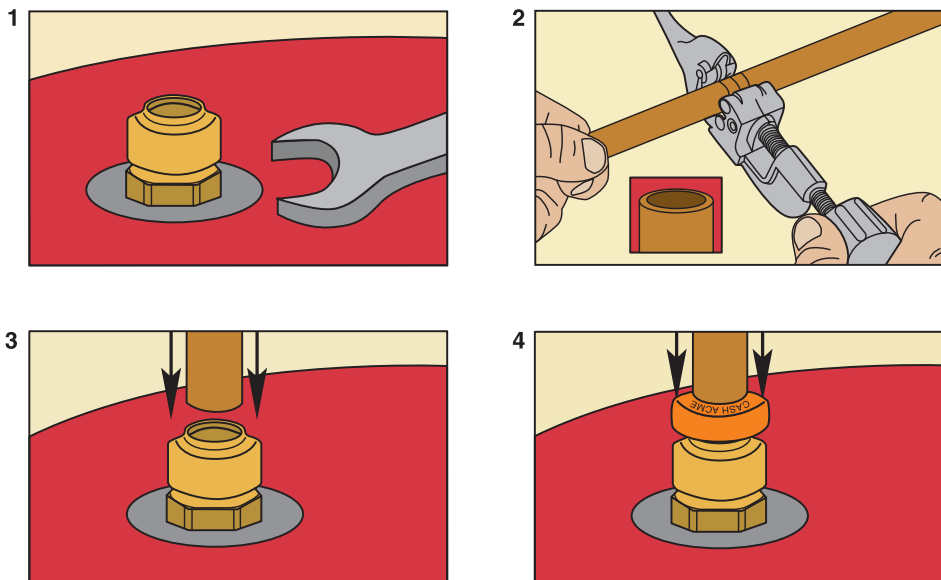
SharkBite® Water Heater Installation Kit

The SharkBite® Water Heater Installation Kit is designed to simplify water heater installation. The kit features special push-fit fittings that allow the user to connect water distribution pipe in seconds with relative ease.

- Instant push-fit connection for increased ease-of-use: *No soldering, clamps, unions, or glue required.*
- Fittings certified to 200 PSI and 200°F (93°C): *Proven durability and quality.*
- Fits copper tubing, and CTS CPVC and PEX: *Connects all three types in any combination.*
- Integral tube liner for PEX installations: *Integrated design means no loose components, ensures secure, reliable connection.*
- Design certified and agency listed: *Inspector friendly, peace of mind!*
- Compact, robust DZR brass body: *Foundation of a strong, corrosion resistant, durable fitting.*
- Design certified to ANSI/NSF-61 and ASSE 1061 product standard for use in potable water and hydronic heating water distribution: *Quality engineered and manufactured.*
- Approved to be used underground and behind walls without access panels.
- Designed for hydronic heating as well as potable water distribution.



TYPICAL INSTALLATION

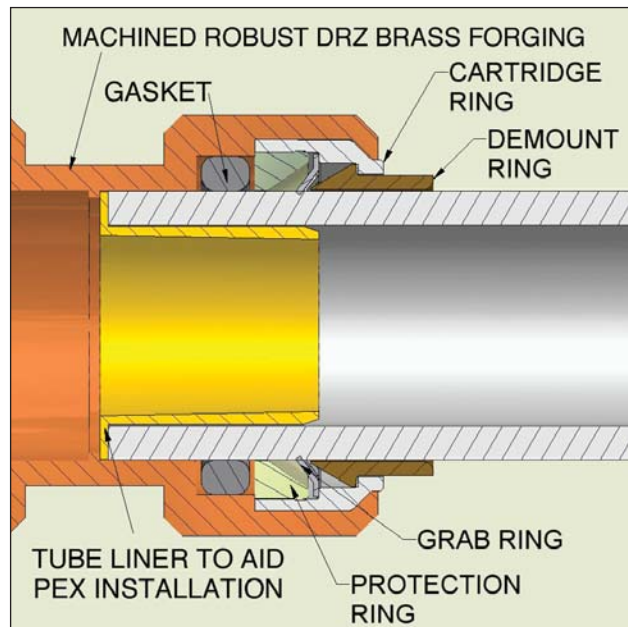


(Please consult with local plumbing codes concerning specific water heater piping requirements.)





SharkBite® Water Heater Installation Kit



SIZES

| Kit | A | B | C |
|-------------------------|------|-------|-----------|
| 1/2" X 1/2" MNPT (U068) | 1/2" | 1.75" | 3/4" FNPT |
| 3/4" X 3/4" FNPT (U088) | 3/4" | 1.79" | 3/4" FNPT |

CERTIFICATIONS

The SharkBite® push-fit fittings have been design certified and listed to **ASSE 1061/ NSF 61**. The SharkBite® push-fit fittings are listed by **IAPMO** and are certified for potable and hydronic heating water distribution (note: Glycol mixture for hydronics is not to exceed 50% concentration). The SharkBite® push-fit fittings have been certified for underground applications and as a manufactured joint without access panels and they meet **UPC, IPC** and **cUPC** requirements.