

## Multi/Split System Submittal Data

CS-KS18NB4UW

Grille: CZ-18BT1U

Ceiling Recessed Indoor Unit - Multi System Air Conditioner

Job Name: \_\_\_\_\_  
 Location: \_\_\_\_\_  
 Engineer: \_\_\_\_\_  
 Submitted to: \_\_\_\_\_  
 Submitted by: \_\_\_\_\_  
 Reference: \_\_\_\_\_

Approval: \_\_\_\_\_  
 Date: \_\_\_\_\_  
 Construction: \_\_\_\_\_  
 Unit #: \_\_\_\_\_  
 Drawing #: \_\_\_\_\_



### General Data (at 230V)

Power	V/P/Hz	230/1/60
Circuit Ampacity	(A)	20
Fuse Size, Max.	(A)	20
Running Amps	(A)	.15
Power Input	(W)	35

### Indoor Unit

Fan type		Turbo
Dia. & Length (in.) - No. Speeds		D12-5/8 L5-3/4 - 1
No. Speeds		3 & Auto
No. Poles	(RPM, High)	8 - 720
No. Motors	(W)	30 - 1
CFM	(HI/Med/Low)	341/294/253
Operation Sound	(HI) dB-A	44

Coil Type	Aluminum Plate Fin & Copper Tube
Fin Type - Pipe Type	Slit Plate - Inner Rifled
Rows - F.P.I.	2 - 18.1
Face Area	(sq.ft.) 2.94
Tube Size	(in.) 9/32"
Drain Connection Size	(in.) 23/32"

Refrigerant		R410A
Line Size	(in. O.D. Discharge)	1/4"(Flare)
Line Size	(in. O.D. Suction)	1/2"(Flare)

Dimensions	(in.)	H x W x D
Indoor Unit	(Uncrated)	12-5/16 x 24-19/32 x 24-19/32
	(Crated)	11-13/32 x 24-13/16 x 28-1/8

Weight		Indoor
Net	(lbs.)	41.3
Shipping	(lbs.)	41.9

Shipping Volume	(cu.ft.)	Indoor 4.59
-----------------	----------	-------------

### Performance Data @ ARI Standard Conditions (230V)

Cooling		
Total Capacity	(BTU/H)	17,500
Moisture Removal (HI)	(Pint/H)	4.89

### Feature

Controls	Microprocessor
Remote Controller	LCD Wireless Type, Temp. Sensor Built In
Temperature Control	IC Thermostat
Timer	24 Hr. Program, 1 Hr. Off
Night Setback	Built-In
Air Louver	Automatic
Power Failure Automatic Restart	Built-In
Self-Diagnosis	Built-In
Quiet Operation	Built-In
Air Filter	Washable, Anti-Mold

### Option

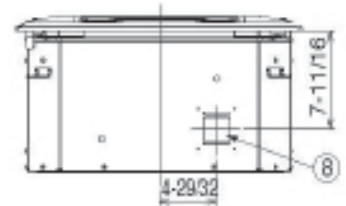
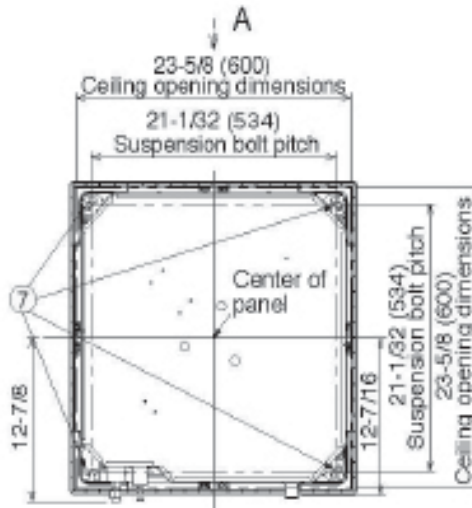
Refrigerant Line Set	Available
Fresh Air Intake	Knock-out
Air duct Extension	N/A
Condensate Drain Pump	Standard
Hard Wired Remote Controller	Available
Non-Removeable Remo-con Bracket	Available

# ➡➡➡ Dimensions

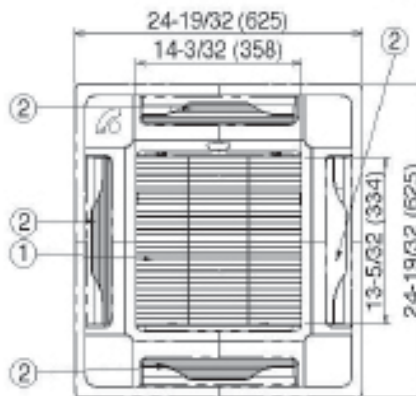
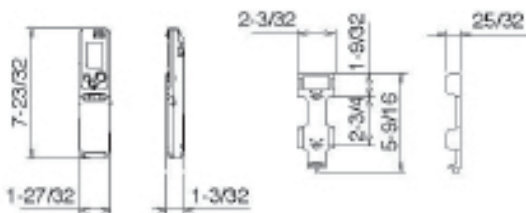
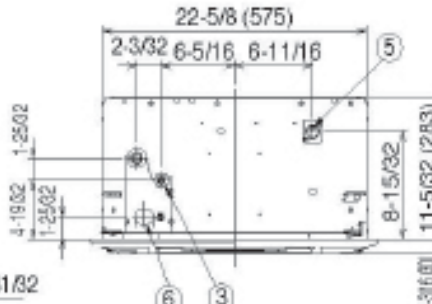
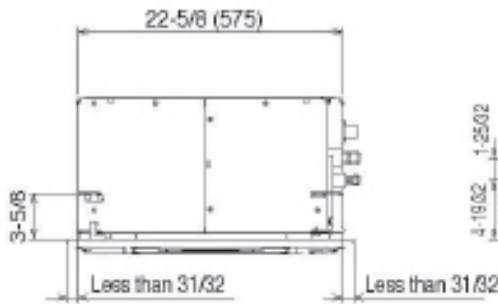
## Operating Range

		IndoorAirIntakeTemp.	OutdoorAirIntakeTemp.
Cooling	Maximum	95F DB/71F WB	115F DB
	Minimum	67F DB/57F WB	67F DB

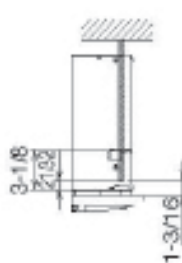
①	Air intake
②	Discharge outlet
③	Refrigerant tubing (liquid tube) dia. 1/4" (flared)
④	Refrigerant tubing (gas tube) dia. 1/2" (flared)
⑤	Drain tube connection port VP20 (outer dia. 1")
⑥	Power supply port
⑦	Suspension bolt hole (4 - 1/2" x 1-1/8" hole)
⑧	Fresh air intake duct connection port (dia. 3-7/8")



A View



The length of the suspension bolts should be selected so that there is a gap of 1-3/16" or the ceiling (21/32" or more below the lower surface of the main unit), as shown in the figure at right. If the suspension bolts is too long, it will contact the ceiling panel and the unit cannot be installed.



Panasonic ideas for life

Panasonic North America

Air Conditioning Division

1690 Roberts Blvd., NW, Suite 110

Kennesaw, GA. 30144

<http://www.panasonic.com/aircon>

