

K2

BOILER SYSTEM

Turn a K2™ installation into a high efficiency home heating system with these enhancements

FastPipe™

Ready-made primary/secondary piping

- Connects to boiler in seconds
- Includes five additional connections

Sage Zone Control Circulator Panel

- Optimizes heating system efficiency
- Virtually eliminates short cycling to extend boiler life

Wireless Outdoor Reset Adapter

- Reduces installation time
- Ability to mount outdoor sensor in optimal location

Instant Combi Kit

Includes mixing valve and FastPipe primary/secondary piping

- Easy addition of DHW capability to K2 boiler

U.S. Boiler Company



K2 BOILER SYSTEM



The K2 Boiler System is a series of individual enhancements available now for the K2 boiler. Offering ease of installation, exclusive features, and outstanding overall value and performance, they are like the K2 itself...designed with YOU in mind! Most components that comprise the K2 boiler system are **designed to be used with the Sage2.2 control system***, and can be installed either individually or as a comprehensive upgrade package.

K2 FastPipe™

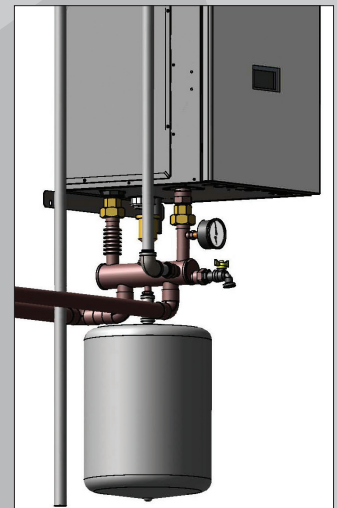
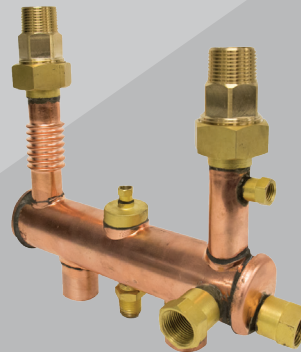
Ready-made primary/secondary piping

Completes boiler loop plumbing and water connections on a K2 condensing boiler in mere seconds, saving installation time and cost.

- **Reliable hydraulic separation** optimizes boiler loop flow and zone supply
- **Superb value** – inexpensive to purchase and install
- **Factory built, 100% water tested** – fewer callbacks
- **Additional connections** for add-ons (expansion tank, relief valve, gauge, drain valve, and air separator)

PART NUMBERS: (K280-120) 106259-01,
(K2150-180) 106259-02

*FastPipe can be used on any K2 installation regardless of control system version



Wireless Outdoor Reset Adapter

Lowers cost of installation by eliminating outdoor wiring

- **Fast hook-up** – Receiver is wired to the boiler with a short 1-2-3 T-stat wire (EnviraCOM).
- **No limitations** – The outdoor sensor (transmitter) can be mounted in the most ideal location for optimal temperature monitoring and highest efficiency.
- **Includes** Redlink® transmitter, receiver, and two AA-lithium batteries
- **Reliable** – “2-month low battery” warning displays on boiler touchscreen.
- **Input ratings:** 24 VAC, 60 hz, (from boiler), FCC compliant.

PART NUMBER: 105121-01 (for condensing boilers)



Sage Zone Control Circulator Panel

Calculates heating demand from different zones and “re-sizes” for optimum efficiency and whole home comfort.

- **Pre-programmed HeatMatch™ software** calculates zone demand, measures supply water temperature, and automatically adjusts maximum firing rates starting at low fire
- **Reduces boiler “short cycling”** and extends heating system life. Increases condensing and efficiency.
- **Three-temperature versatility** is perfect for buildings with a mix of high and low heat radiation and/or an indirect water heater.
- **Advanced freeze protection** monitors individual zone activity during freezing temperatures.
- **Plug & play** – Snap-in RJ45 cable (included), eliminates labor for boiler wiring. Includes factory settings for ease of setup.
- **Touch Screen** (on the boiler) controls settings and adjustments and monitors BTUs and cycle history
- **Easy setup!** No high voltage (120V) wire prep needed for domestic hot water priority.

PART NUMBER: 104590-01



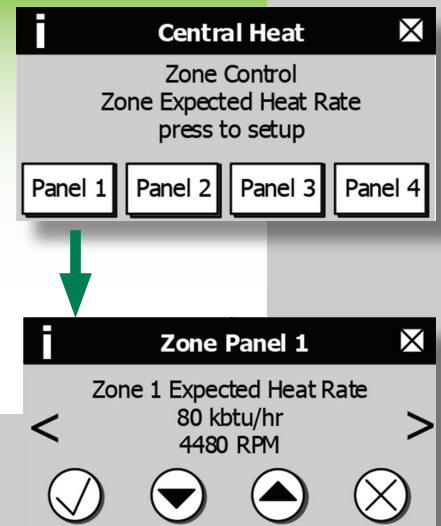
HeatMatch™ is EASY!



Factory pre-sets provide a quick and easy out-of-the box heating solution.



Full zone control at your fingertips giving full custom control over the heating system. Interact with zone control and efficiency information via the touchscreen on Sage2.2-equipped K2 boilers.



Unmatched Efficiency and Boiler Preservation

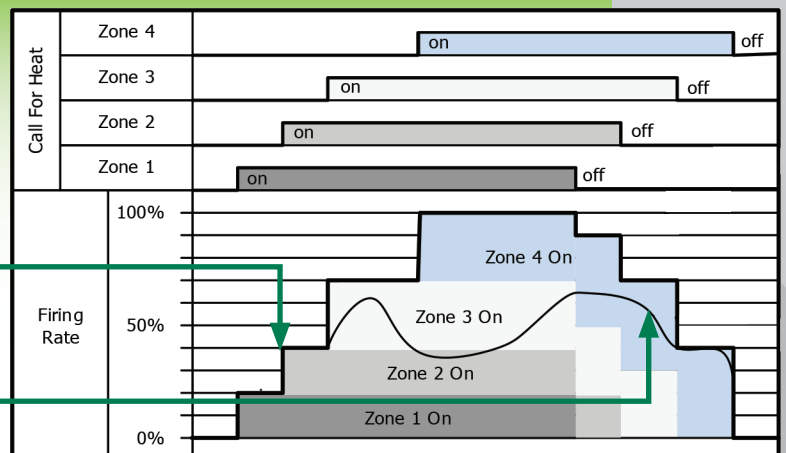


Less over-firing and short-cycling means less boiler wear

Summed maximum firing rates for each zone on the coldest days

and

Actual, modulated firing rates on most other days



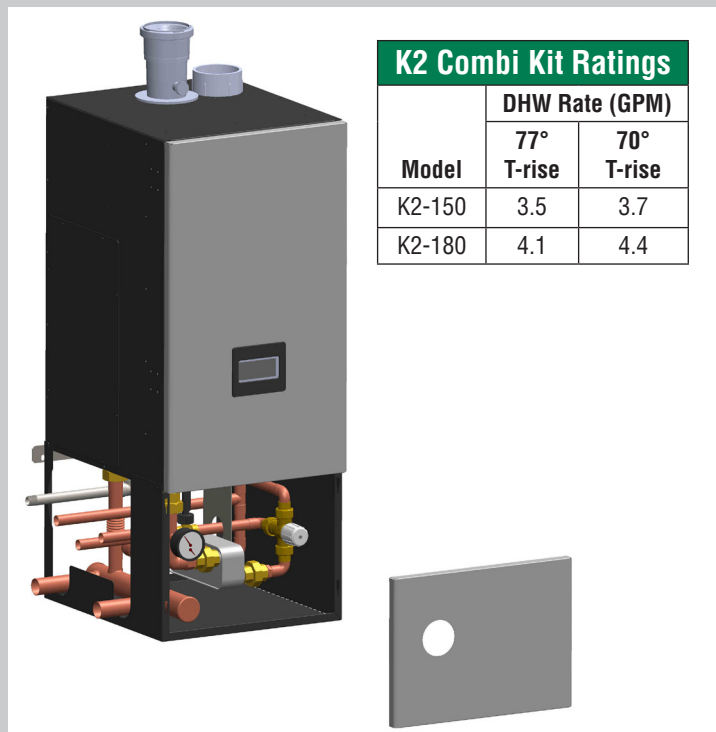
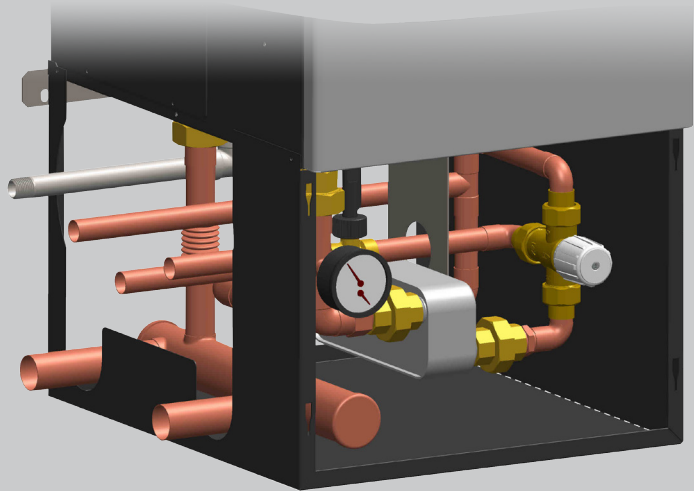
K2 Instant Combi Kit

Includes mixing valve and FastPipe primary/secondary piping

Fast and easy way to add domestic hot water capability directly to a K2 installation. Kit includes flat plate heat exchanger.

- **Factory designed add-on component** offers easy attachment to the bottom of the K2 boiler, precisely matching existing connection fittings
- **Superb value** – inexpensive to purchase and install
- **Factory built, quality tested** – fewer callbacks
- **Includes FastPipe primary/secondary loop**
- **Built-in hot water temperature control**
 - Teflon coated mixing valve
 - Prevents excessively hot water sent to sinks & showers
 - Meets safety certifications (ASSE1017, CSA, IAPMO)
 - Adjustment between 70°F and 145°F
 - Lockable handwheel temperature control
 - Uses temperature/pressure gauge included with K2 boilers
- **Designed to provide ample hot water for most domestic needs**
 - 150 kit can support demand up to 2 showers and 2 sinks
 - 180 kit can support demand up to 2 showers and 3 sinks
- **Innovative design reduces “cold water sandwich” effect**

PART NUMBER: (K2150, 180) 106341-01



K2 Combi Kit Ratings

Model	DHW Rate (GPM)	
	77° T-rise	70° T-rise
K2-150	3.5	3.7
K2-180	4.1	4.4



www.usboiler.net

© 2015 U.S. Boiler Company, Inc., Lancaster, PA
Phone: 1-888-432-8887