

# ARM Control Expandable Zone Relays 2, 3, 4 and 6 Zone Controls



## SWITCHING RELAYS & ACCESSORIES

### ARM4P



| MODEL | ZONES | TRANSFORMER VOLTAGE   |
|-------|-------|-----------------------|
| ARM2P | 2     | 120 VAC, 60 Hz, 20 VA |
| ARM3P | 3     | 120 VAC, 60 Hz, 30 VA |
| ARM4P | 4     | 120 VAC, 60 Hz, 30 VA |
| ARM6P | 6     | 120 VAC, 60 Hz, 30 VA |

**Features:**

- Priority Safety Timer - Ensures Other Zones Get Heat Every 30 Minutes & Prevents Freeze-ups
- 5-second Time Delay for Boiler Shut-off
- Premium plug-in replaceable relays
- Electronic Fuse - Auto Reset
- 30VA Transformer\*† - Robust Enough to Handle up to 15 Zones
- 24 VAC Transformer Terminals
- Plug-in, Add-on Zone Modules (AD-1 or AD-4)
- Switchable Priority
- High relay load rating - 7.2 Amp / 1/3HP
- CSA listed
- Double-sided printed circuit board construction - 100% Factory Tested For Reliability
- Separate xx (isolated switch) & ZC/ZR Relays protect Boiler Aquastat.
- Relay Diagnostic Light - Easily Seen Through Window On Cover
- Clearly marked Terminals With Clamping Plates

\* ARM-2P uses 20 VA Transformer. † Requires dry contact type thermostat or use of IR822 Isolation Relay

### AD-4 Add-On Zoning Modules For ARM Relay Control

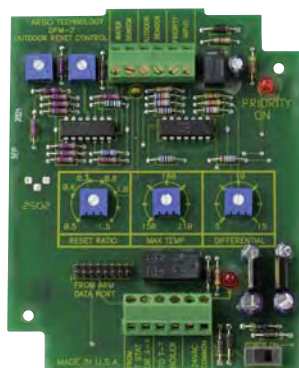


#### SPECIFICATIONS:

| MODEL | ZONES | TRANSFORMER VOLTAGE | SWITCHING ACTION | THERMOSTAT CURRENT | SINGLE PHASE MOTOR RATING 120V AC |
|-------|-------|---------------------|------------------|--------------------|-----------------------------------|
| AD-1  | 1     | N/A                 | 0.085            | SPST               | 1/3HP                             |
| AD-4  | 4     | N/A                 | 0.085            | SPST               | 1/3HP                             |

### DPM2 Outdoor Reset Control

The DPM2 monitors outside temperature and adjusts boiler water temperature to match the outdoor demand – maximizing efficiency and reducing fuel usage.



- Can be used with any Argo Relay or Zone Value Control
- Or can work with most competitors' relays
- Reduces heating costs an average of 10% to 15% a year (depending on climate).

#### Standard Equipment:

