




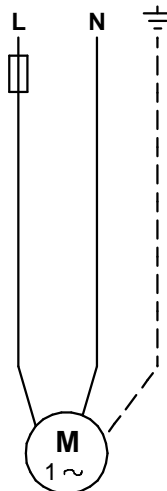
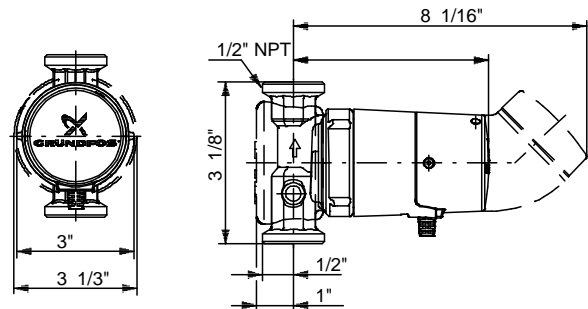
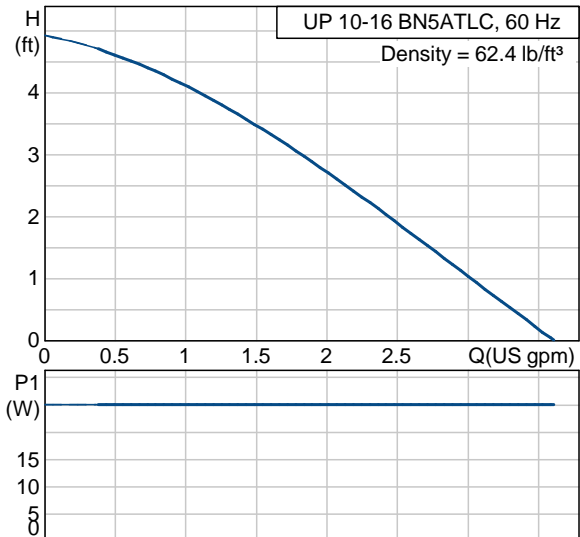
Company name: -  
 Created by: -  
 Phone: -  
 Fax: -  
 Date: -

Position	Count	Description	Unit price
	-1	<p><b>UP 10-16 BN5ATLC</b></p>  <p>Product photo could vary from the actual product</p> <p>Product No.: 96433899</p> <p>The pump is equipped with a spherical motor. In contradistinction to the conventional canned-rotor motors, the spherical motor does not have a rotating bearing shaft. The stator transfers the magnetic field to the rotor in the water-conducting part of the pump.</p> <p>The water-conducting part of the pump is hermetically separated from the stator with a stainless steel spherical separator.</p> <p>The built-in timer enables the pump to start and stop automatically at set intervals of minimum 20 minutes.</p> <p>The built-in thermostat can be set to stop the pump at a preset liquid temperature.</p> <p><b>The pump is characterized by:</b></p> <ul style="list-style-type: none"> <li>* Self-adjusting, gimbal-mounted rotor bearing lubricated by the pumped liquid.</li> <li>* High-quality bearing material.</li> <li>* The motor can be separated from the pump housing, enabling easy maintenance and replacement.</li> <li>* Corrosion-resistant impeller, Stainless steel, EPDM, PPO, PTFE, Graphit.</li> <li>* Brass pump housing.</li> </ul> <p>The motor is a 1-phase motor. It does not require external motor protection.</p> <p><b>Liquid:</b></p> <p>Liquid temperature range: 35.6 .. 203 °F              Density: 62.4 lb/ft³</p> <p><b>Technical:</b></p>	On request

Position	Count	Description	Unit price
		TF class: 95 Maximum operating pressure: 145 psi Approvals on nameplate: UL, CSA  <b>Materials:</b> Pump housing: Brass MS 68 Impeller: Stainless steel, EPDM, PPO, PTFE, Graphit  <b>Installation:</b> Maximum operating pressure: 145 psi Flange standard: USA Threaded Pipe connection: NPT 1/2" Pressure stage: 10 Port-to-port length: 3 1/8 in  <b>Electrical data:</b> Max. power input: 25 W Main frequency: 60 Hz Rated voltage: 1 x 115 V Current in speed 3: 0.23 A Capacitor size - run: 2.2 µF Enclosure class (IEC 34-5): 42 Insulation class (IEC 85): F Type of cable plug: NEMA 5-15P  <b>Others:</b> Net weight: 2.93 lb Gross weight: 3.37 lb Shipping volume: 0.15 ft <sup>3</sup>	

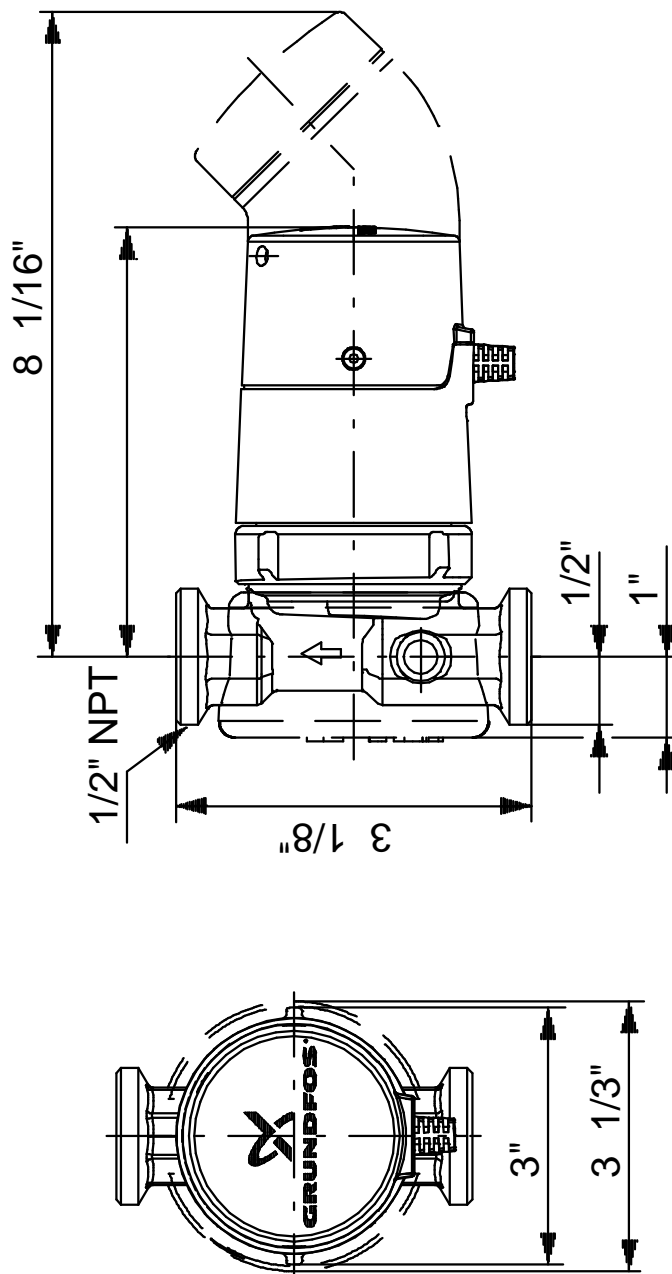
Company name: -  
 Created by: -  
 Phone: -  
 Fax: -  
 Date: -

Description	Value
Product name:	UP 10-16 BN5ATLC
Product Number:	96433899
EAN number:	5700393609709
Technical:	
Speed Number:	1
Head max:	5.25 ft
TF class:	95
Maximum operating pressure	145 psi
Approvals on nameplate:	UL, CSA
Materials:	
Pump housing:	Brass MS 68
Impeller:	Stainless steel, EPDM, PPO, PTFE, Graphit
Installation:	
Maximum operating pressure	145 psi
Flange standard:	USA Threaded
Pipe connection:	NPT 1/2"
Pressure stage:	10
Port-to-port length:	3 1/8 in
Liquid:	
Liquid temperature range	35.6 .. 203 °F
Density:	62.4 lb/ft³
Electrical data:	
Max. power input:	25 W
Main frequency:	60 Hz
Rated voltage:	1 x 115 V
Current in speed 3	0.23 A
Capacitor size - run	2.2 µF
Enclosure class (IEC 34-5):	42
Insulation class (IEC 85):	F
Motor protection:	NONE
Thermal protec:	Impedance protected
Type of cable plug:	NEMA 5-15P
Controls:	
Thermostat:	built in to stop the pump at preset liquid temperatures
Range of thermostat temperature	95 .. 149 °F
Time switch:	internal on/off time switch included
Others:	
Net weight:	2.93 lb
Gross weight:	3.37 lb
Shipping volume:	0.15 ft³





96433899 UP 10-16 BN5ATLC 60 Hz



Note! All units are in [mm] unless others are stated.  
 Disclaimer: This simplified dimensional drawing does not show all details.