

HOLDRITE®

CONVERTING MAKESHIFT METHODS INTO ENGINEERED SOLUTIONSSM

PEXRITE® THE TORCHLESS INSTALLATION™

**PEX
Stub-Out**



**PEX to Copper
Stub-Out**



**Pick Your
Stub-Out
Method**



Patents Issued or Pending

**PEXRITE®
6PAK™**

NEW

**FLOOR/COUNTER
CASE DISPLAY**



6PAK



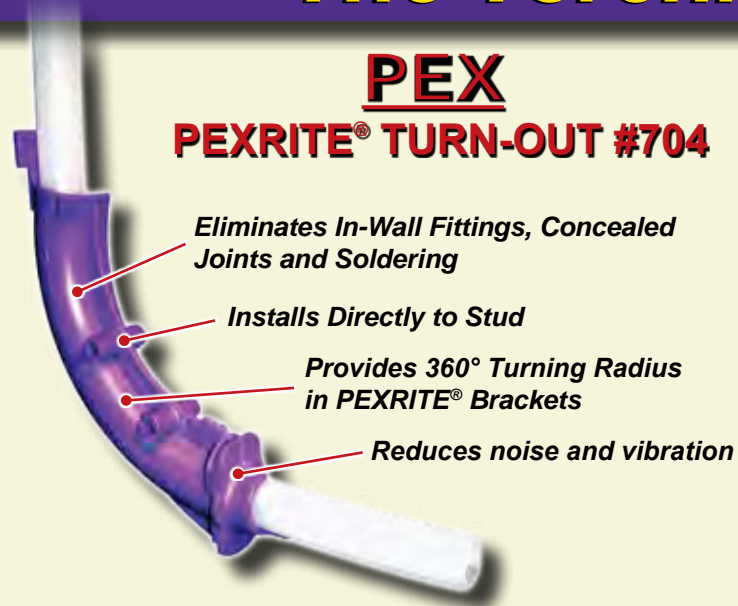
**CONTRACTOR
KIT**

MODEL #	DESCRIPTION
704-PR	PEX Stub-Out
701-PR	PEX to Copper Stub-Out

(800) 321-0316 • www.holdrite.com

PEXRITE®

The Torchless Installation™



Pick Your
Stub-Out
Method

For use with
PEXRITE®
Brackets Only



#103-18

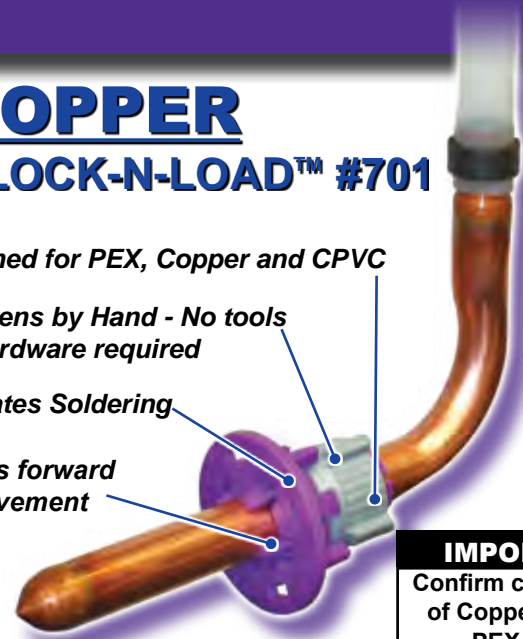
COPPER
PEXRITE® LOCK-N-LOAD™ #701

Designed for PEX, Copper and CPVC

Tightens by Hand - No tools or hardware required

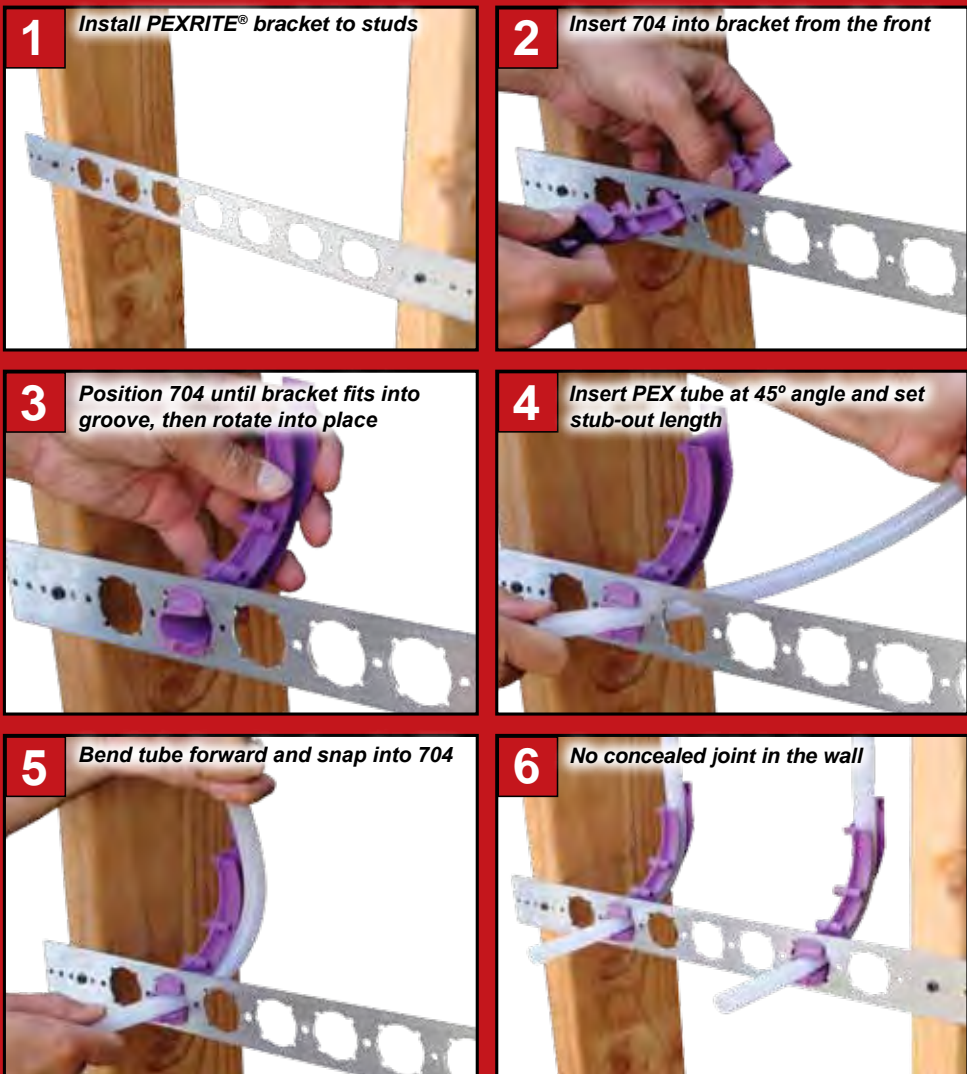
Eliminates Soldering

Secure fit prevents forward and backward movement

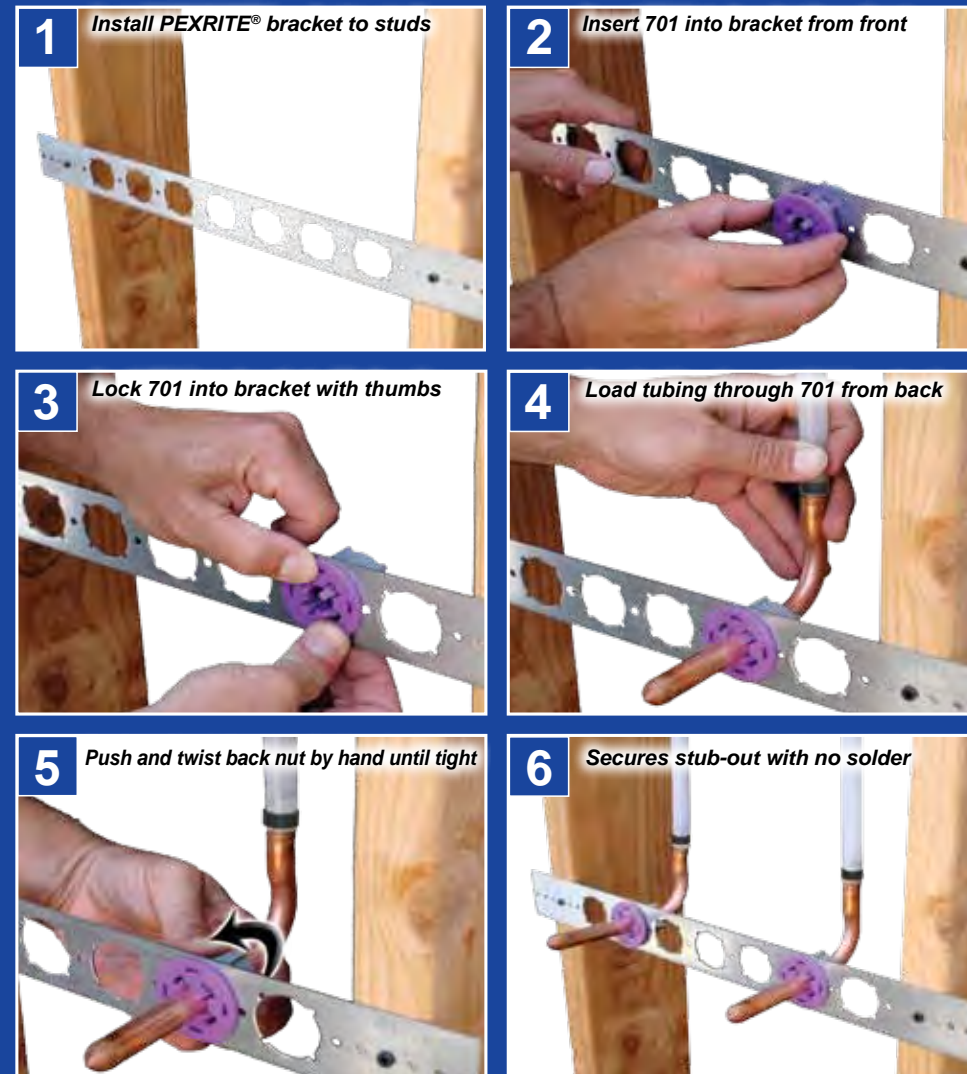


IMPORTANT:
Confirm compatibility of Copper Ells with PEX tubing manufacturer.

PEXRITE TURN-OUT #704 INSTALLATION INSTRUCTIONS



PEXRITE LOCK-N-LOAD #701 INSTALLATION INSTRUCTIONS



ADDITIONAL APPLICATION SOLUTIONS

PEXRITE® #705

- 3/8" & 1/2" CTS PEX tubing
- Sink/Lavatory & Toilet stub-out
- Overhead 90° turn
- In-slab turn-out from decking into wall



PEXRITE® #706

- 3/8" & 1/2" CTS PEX tubing
- Ideal for radiant heating application
- Multi-run versatility for manifolds



PEXRITE® #707

- Up to 7/8" O.D. PEX tubing, soft copper, and flexible conduit
- In-slab installation at ground-work with rebar or wood decking
- Multi-run versatility for manifolds



PEXRITE® #708

- Double run Pop-up with side entry
- Up to 1-1/8" O.D. PEX tubing, soft copper, and flexible conduit
- In-slab installation at ground-work with rebar or wood decking
- Multi-run versatility for manifolds



PEXRITE® #708-E

- Double run Pop-up
- Up to 2-1/2" IPS rigid conduit 90s, flexible conduit (smirf tubing), PEX, and soft copper
- Mounts directly to decking or with rebar for slab-on-grade installation



PEXRITE POP-UP INSTALLATION INSTRUCTIONS



PIPE SUPPORT BRACKETS AND STUB-OUT SUPPORTS

MODEL #	DESCRIPTION	BOX QTY
103-18	Galvanized bracket with 1-3/8" keyed holes, 20" long.	50
103-26	Galvanized bracket with 1-3/8" keyed holes, 26" long.	50
709	Galvanized bracket with 1-3/8" keyed holes, 7-1/5" long.	50
709-L	Galvanized "L" bracket with 1-3/8" keyed holes.	50
709-EXT	Galvanized bracket with 1-3/8" keyed holes and up to 8" center line off floor.	50
721	Galvanized bracket 3.38" x 2.25" with keyed hole. Integrates with the HOLDRITE STOUT BRACKET® or mounts directly to stud.	50
110-R	Galvanized bracket for lavatory/sink.	50
SB1S	Galvanized telescoping bracket, 10" - 18", supports PEX, Copper and CPVC.	50
SB2S	Galvanized telescoping bracket, 13" - 25", supports PEX, Copper and CPVC.	50

PEXRITE® PEX STUB-OUTS

MODEL #	DESCRIPTION	BOX QTY
704	Turn-out supports 3/8" & 1/2" CTS PEX tubing. No tools required. Temp. range: -10° F to +180° F	100
705	Turn-out supports 3/8" & 1/2" CTS PEX tubing. Mount to block of wood. Sink/lavatory & toilet stub-out support & overhead 90° turns. Temp. range: -10° F to	50

PEXRITE® PEX TO COPPER STUB-OUTS

MODEL #	DESCRIPTION	BOX QTY
701	Stub-out clamp supports 1/2" CTS PEX, Copper & CPVC tubing. No tools required. Temperature range: -10° F to +140° F	50
701-0536P	Stub-out clamp supports 1/2" CTS PEX tubing & 1/2" CTS 3.5" x 6" Copper Ell.	25
701-0538P	Stub-out clamp supports 1/2" CTS PEX tubing & 1/2" CTS 3.5" x 8" Copper Ell.	25
103-18-701	20" flat, galvanized bracket & 1/2" CTS #701 stub out clamps.	50 brackets/ 100 clamps
103-26-701	26" flat, galvanized bracket & 1/2" CTS #701 stub out clamps.	50 brackets/ 100 clamps

PEXRITE® 6 PAKs

MODEL #	DESCRIPTION	KIT QTY	6PAK QTY
704-PR	PEX stub-out Kit for Sink/Lavatory & Toilet applications. (1) #103-18 and (2) #704 Turn outs. (List Price: 6PAK=\$32.88, CASE=\$197.28)	1	6
701-PR	PEX to Copper stub-out Kit. (1) #103-18, (2) #701 Clamps, & (2) 1/2" CTS 3.5" x 8" Copper Ells. (List Price: 6PAK=\$88.14, CASE=\$528.84)	1	6

PEX POP-UP™ SUPPORTS

MODEL #	DESCRIPTION	BOX QTY
706	Single run 3/8" & 1/2" CTS Pop-up for PEX. Ideal for in-slab and radiant heating. Temp. range: -10° F to +190° F.	50
707	Single run Pop-up for PEX, soft copper and flexible conduit. Tube sizes up to 7/8" O.D. Temp. range: -10° F to +190° F.	25
708	Double run Pop-up for PEX, soft copper and flexible conduit. Tube sizes up to 1-1/8" O.D. Temp. range: -10° F to +190° F.	15
708-E	Double run Pop-up for PEX, flexible conduit (smirf tubing), & rigid conduit 90s. Tube sizes up to 2-1/2" IPS. Temp. range: -10° F to +190° F.	15

INSERTS/CLAMPS

MODEL #	DESCRIPTION	BAG QTY	MASTER CASE QTY
161, 162, 163	Thru-stud isolator for 1/2", 3/4" and 1" tubing.	50/50/25	500/500/250
181, 182, 183	Single-nail clamp for 1/2", 3/4" and 1" tubing.	100/50/25	1000/500/250
404-R, 405-R, 406-R	1/2", 3/4" and 1" CTS Fire Retardant inserts. Meets UL94 V-2.	100	N/A