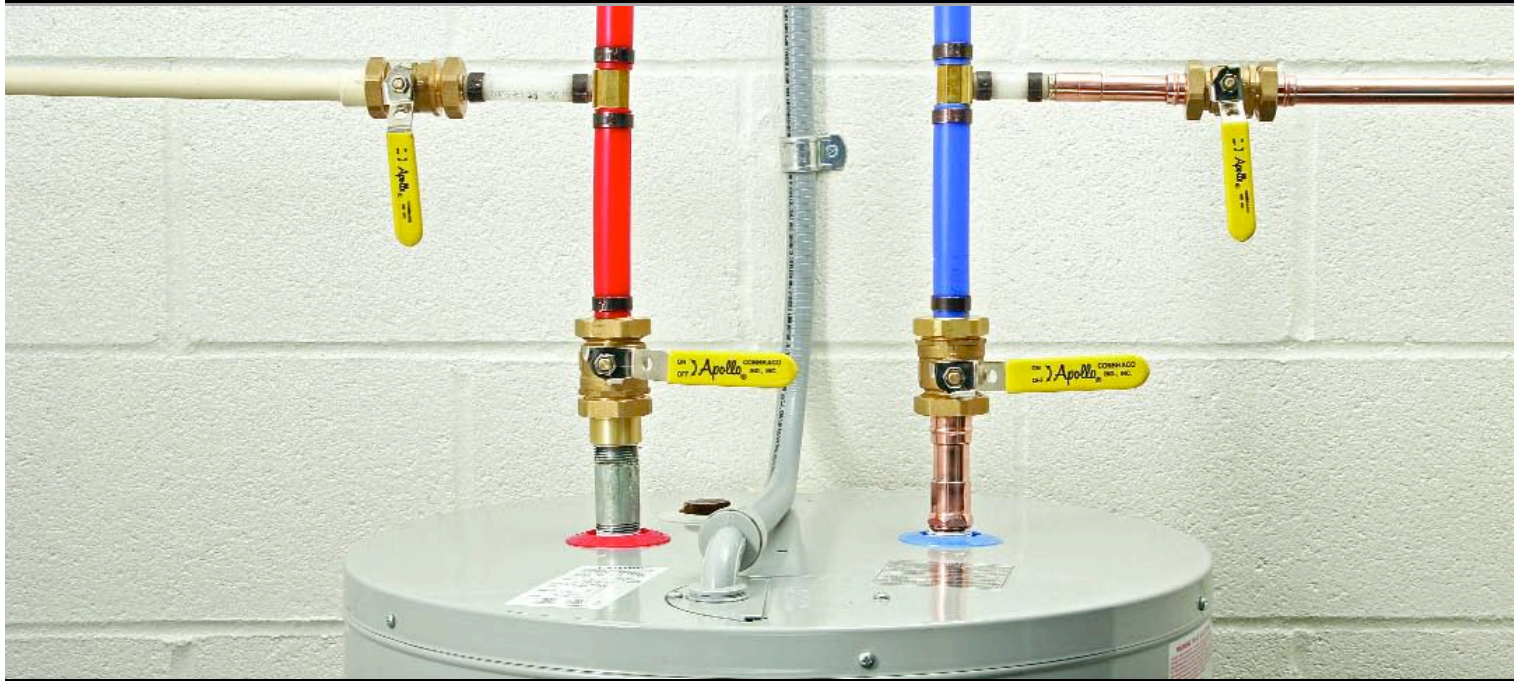


# Pipe Master™ Ball Valves

## TYPICAL APPLICATION



Part #	Size (in.)/Description	Inner Carton Quantity	Inner Carton Weight	Inner Carton Cube	UPC Code	UCC-14 Code
<b>PIPE MASTER 1/2" Products</b>						
69bv0301pz	1/2 Ball Valve Body	20	15.20	0.253	670750094316	20670750094310
69bv0302pz	1/2 Sweat (Pre-Soldered) - Pipe Adapter	40	1.36	0.074	670750094552	40670750094550
69bv0303pz	1/2 MNPT - Pipe Adapter	40	5.36	0.074	670750094613	40670750094611
69bv0304pz	1/2 FNPT - Pipe Adapter	40	4.16	0.074	670750094637	40670750094635
69bv0305pz	1/2 PVC - Pipe Adapter	40	0.48	0.074	670750094699	40670750094697
69bv0306pz	1/2 CPVC - Pipe Adapter	40	0.36	0.074	670750094705	40670750094703
69bv0307pz	1/2 PEX - Pipe Adapter	40	2.72	0.074	670750094729	40670750094727
69bv0308pz	1/2 Compression - Pipe Adapter	40	3.64	0.074	670750094743	40670750094741
69bv0309pz	1/2 Push Fitting - Pipe Adapter	40	2.56	0.074	670750094767	40670750094765
69bv0310pz	1/2 PE (Poly Pipe) - Pipe Adapter	40	4.48	0.074	670750094774	40670750094772
69bv0311pz	1/2 Apollo Press - Pipe Adapter	40	2.72	0.074	670750094804	40670750094802
<b>PIPE MASTER 3/4" Products</b>						
69bv0401pz	3/4 Ball Valve Body	30	38.40	0.500	670750094392	30670750094393
69bv0402pz	3/4 Sweat (Pre-Soldered) - Pipe Adapter	60	3.18	0.097	670750094811	60670750094811
69bv0403pz	3/4 MNPT - Pipe Adapter	60	9.54	0.097	670750094828	60670750094820
69bv0404pz	3/4 FNPT - Pipe Adapter	60	9.84	0.097	670750094835	60670750094837
69bv0405pz	3/4 PVC - Pipe Adapter	60	1.02	0.097	670750094859	60670750094851
69bv0406pz	3/4 CPVC - Pipe Adapter	60	0.78	0.097	670750094897	60670750094899
69bv0407pz	3/4 PEX - Pipe Adapter	60	5.64	0.097	670750094958	60670750094950
69bv0408pz	3/4 Compression - Pipe Adapter	30	5.01	0.097	670750094965	30670750094966
69bv0409pz	3/4 Push Fitting - Pipe Adapter	30	2.76	0.097	670750094972	30670750094973
69bv0410pz	3/4 PE (Poly Pipe) - Pipe Adapter	60	9.48	0.097	670750094989	60670750094981
69bv0411pz	3/4 Apollo Press - Pipe Adapter	60	5.70	0.097	670750094996	60670750094998
<b>PIPE MASTER 1" Products</b>						
69bv0501pz	1 Ball Valve Body	10	19.40	0.244	670750094477	10670750094474
69bv0502pz	1 Sweat (Pre-Soldered) - Pipe Adapter	20	1.80	0.074	670750095009	20670750095003
69bv0503pz	1 MNPT - Pipe Adapter	20	4.70	0.074	670750095016	20670750095010
69bv0504pz	1 Fnpt - Pipe Adapter	20	4.68	0.074	670750095030	20670750095034
69bv0505pz	1 Pvc - Pipe Adapter	20	0.62	0.074	670750095047	20670750095041
69bv0506pz	1 Cpvc - Pipe Adapter	20	0.56	0.074	670750095061	20670750095065
69bv0507pz	1 Pex - Pipe Adapter	20	3.8	0.074	670750095085	20670750095089
69bv0508pz	1 Compression - Pipe Adapter	10	2.65	0.074	670750095092	10670750095099
69bv0509pz	1 Push Fitting - Pipe Adapter	10	1.28	0.074	670750095122	10670750095129
69bv0510pz	1 Pe (Poly Pipe) - Pipe Adapter	20	5.12	0.074	670750095146	20670750095140
69bv0511pz	1 Apollo Press - Pipe Adapter	20	2.86	0.074	670750095153	20670750095157

Conbraco Industries, Inc. • PO Box 247 • Matthews, NC 28106 • Phone: (704) 841-6000 • Fax: (704) 841-6020

*'Apollo' Valves*

Conbraco® and Apollo® are registered trademarks of Conbraco Industries, Inc. Pipe Master™ is a trade mark of Conbraco Industries, Inc. Conbraco Industries, Inc. reserves the right to change specifications without notice. © 2007 Conbraco Industries, Inc. Printed in USA PMBR9000 0807 20k DKG

# APOLLO<sup>®</sup> PIPE MASTER<sup>™</sup> BALL VALVES

**"Always  
the Right  
Connection"**

**Save  
Time!  
Save  
Money!**

- For use with Copper, PEX, PVC, CPVC, PE (Poly), Galvanized Steel and Cast Iron pipe.
- Interchangeable connections for total flexibility, minimum inventory!
- More than 300 possible combinations!

Patent Pending

**'Apollo' Valves**  
Manufactured by Conbraco Industries, Inc.



Apollo®  
Pipe Master™  
Ball Valves

# “Always the Right Connection”

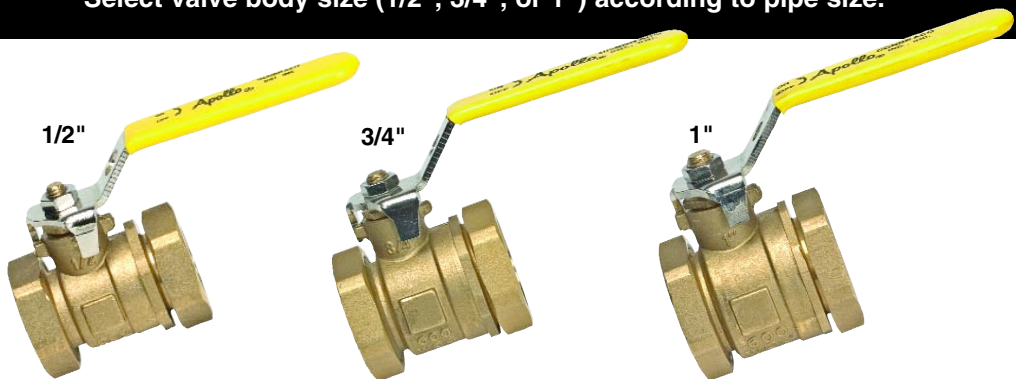
Today a plumber or homeowner may need a valve that connects to copper pipe at the inlet and pex at the outlet, or galvanized pipe at the inlet and CPVC at the outlet, or poly by CPVC or all of the above and then some. Making sure you have the right valve with the right end connections is more complicated and costly than ever.

New Apollo® Pipe Master™ Ball Valves are the universal solution. They make it easy to choose and install the right ball valves for virtually any residential or commercial plumbing application.

**Easy 3-step  
process:**

Select valve body size (1/2", 3/4", or 1") according to pipe size.

**1**



**2**

Select inlet and outlet pipe adapters based on your inlet and outlet piping.



**3**

Connect pipe adapters to valve body, and your custom Pipe Master Valve is ready for use.



# One Valve, Three Sizes, 10 Connections, Over 300 Combinations!

## PIPE ADAPTER OPTIONS



**SWEAT**



**MNPT**



**FNPT**



**PVC**



**CPVC**



**PEX**



**COMPRESSION**



**PUSH**



**PE**



**APOLLO-PRESS  
(CRIMP)**

## MORE THAN 300 POSSIBLE VALVE CONFIGURATIONS

### INLETS

### OUTLETS

<b>SWEAT</b>	X	SWT	MNPT	FNPT	PVC	CPVC	PEX	COMP	PUSH	PE	Apollo-Press
<b>MNPT</b>	X	SWT	MNPT	FNPT	PVC	CPVC	PEX	COMP	PUSH	PE	Apollo-Press
<b>FNPT</b>	X	SWT	MNPT	FNPT	PVC	CPVC	PEX	COMP	PUSH	PE	Apollo-Press
<b>PVC</b>	X	SWT	MNPT	FNPT	PVC	CPVC	PEX	COMP	PUSH	PE	Apollo-Press
<b>CPVC</b>	X	SWT	MNPT	FNPT	PVC	CPVC	PEX	COMP	PUSH	PE	Apollo-Press
<b>PEX</b>	X	SWT	MNPT	FNPT	PVC	CPVC	PEX	COMP	PUSH	PE	Apollo-Press
<b>COMPRESSION</b>	X	SWT	MNPT	FNPT	PVC	CPVC	PEX	COMP	PUSH	PE	Apollo-Press
<b>PUSH</b>	X	SWT	MNPT	FNPT	PVC	CPVC	PEX	COMP	PUSH	PE	Apollo-Press
<b>PE (POLY)</b>	X	SWT	MNPT	FNPT	PVC	CPVC	PEX	COMP	PUSH	PE	Apollo-Press
<b>APOLLO-PRESS</b>	X	SWT	MNPT	FNPT	PVC	CPVC	PEX	COMP	PUSH	PE	Apollo-Press