

THIS SPACE FOR DESIGNER/ENGINEER APPROVAL

| | | |
|-------------------------|------------|------------------------|
| Job/Customer _____ | Date _____ | Contractor _____ |
| Model Specified _____ | Qty _____ | Approved By _____ |
| Designer/Engineer _____ | Date _____ | Contractor's PO# _____ |
| Submitted by _____ | Date _____ | Other _____ |

5240 Series

**Full Port Forged Brass Uni-Flange Ball Valves
w/ Replaceable Integral Spring Check
Bonus Wing Style "T" Handle, Nuts & Bolts
SWT x Flange
600 WOG – 150 PSI @ 200°F - ISO 9001**



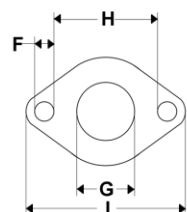
| ITEM # | SIZE | CTN | CASE | A | B | C | D | E | F | G | H | I |
|--|--------|-----|------|-------|---------|---------|-------|-----|-----|---------|---------|-------|
| 52403 | 3/4" | 1 | 10 | 3/4 | 3 7/16 | 2 5/16 | 4 | 3/8 | 1/2 | 1 | 2 11/16 | 4 1/8 |
| 52404 | 1" | 1 | 10 | 1 | 4 7/16 | 2 1/2 | 4 5/8 | 3/8 | 1/2 | 1 1/4 | 2 11/16 | 4 1/8 |
| 52405 | 1 1/4" | 1 | 10 | 1 1/4 | 5 13/16 | 2 15/16 | 4 5/8 | 3/8 | 1/2 | 1 9/16 | 2 11/16 | 4 1/8 |
| 52406 | 1 1/2" | 1 | 10 | 1 1/2 | 5 13/16 | 3 3/8 | 5 1/2 | 3/8 | 1/2 | 1 15/16 | 2 11/16 | 4 1/8 |
| HV MODELS FIT BOTH STANDARD & HIGH VELOCITY PUMPS | | | | | | | | | | | | |
| 52404HV | 1" | 1 | 10 | 1 | 4 7/16 | 2 1/2 | 4 5/8 | 3/8 | 5/8 | 1 1/4 | 2 11/16 | 4 1/8 |
| 52405HV | 1 1/4" | 1 | 10 | 1 1/4 | 5 13/16 | 2 15/16 | 4 5/8 | 3/8 | 5/8 | 1 9/16 | 2 11/16 | 4 1/8 |
| 52406HV | 1 1/2" | 1 | 10 | 1 1/2 | 5 13/16 | 3 3/8 | 5 1/2 | 3/8 | 5/8 | 1 15/16 | 2 11/16 | 4 1/8 |



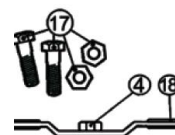
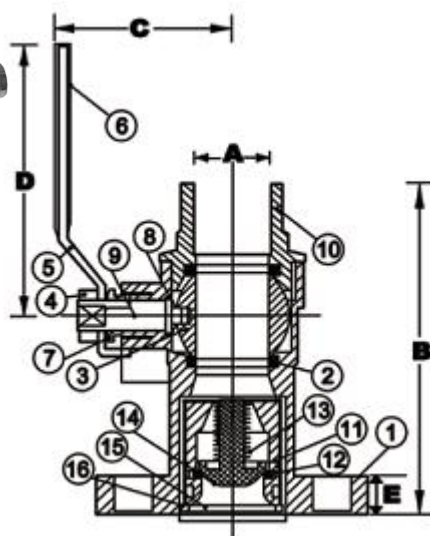
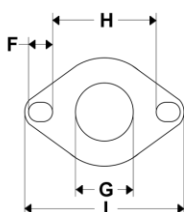
| Size | Cv | Cracking Pressure (PSI) | Recommended Flow Range (gpm) |
|--------|------|-------------------------|------------------------------|
| 3/4" | 15.6 | 0.22 | 9-30 |
| 1" | 27.4 | 0.15 | 16-50 |
| 1 1/4" | 42.4 | 0.16 | 23-80 |
| 1 1/2" | 66.6 | 0.17 | 55-120 |
| 2" | 66.6 | 0.17 | 55-120 |

| NO. | DESCRIPTION | MATERIAL |
|-----|-----------------------|-------------------------|
| 1 | FLANGED BODY | BRASS |
| 2 | SEATS | PTFE |
| 3 | BALL | BRASS HCP |
| 4 | HANDLE NUT | BRASS |
| 5 | LEVER HANDLE | STEEL CP |
| 6 | HANDLE JACKET | VINYL |
| 7 | PACKING GLAND | BRASS |
| 8 | STEM SEAL | PTFE |
| 9 | STEM | BRASS |
| 10 | END CAP | BRASS |
| 11 | CHECK VALVE BODY | ABS |
| 12 | O-RING - INNER SEAL | NBR |
| 13 | SPRING | STAINLESS STEEL 316 |
| 14 | POPPET | ABS |
| 15 | O-RING - OUTER SEAL | ABS |
| 16 | RETAINING RING | STAINLESS STEEL 316 |
| 17 | FLANGE BOLTS & NUTS | STEEL ZP |
| 18 | WING STYLE "T" HANDLE | STEEL CP W/ VINYL GRIPS |

FLANGE FOR REGULAR MODELS



FLANGE FOR HIGH VELOCITY PUMP MODELS



| TEMP °F | PSI |
|---------|-----|
| 100 | 150 |
| 150 | 150 |
| 200 | 150 |
| 250 | N/A |
| 300 | N/A |
| 350 | N/A |
| 366 | N/A |

Specifications: Designed for residential, commercial or industrial use with water or a glycol mixture in conjunction with circulator pumps without integral checks. The valve operates in a horizontal or vertical position. This approved Webster valve is actuated by a blowout proof stem and features an adjustable packing gland. Solder joint temperature ratings are per ASME B16.18 Annex A for 95-5 solder. Other solder materials have lower pressure/temperature limits. Do not silver braze or over heat valves when soldering.

Webstone
VALVE INNOVATION

Quality and Commitment Since 1954

www.webstonevalves.com · P: (800) 225-9529 · F: (800) 336-5133

Webstone product specifications in U.S. customary units are approximate and are provided for reference only. Webstone reserves the right to change or modify product design, construction, specifications or materials without prior notice and without incurring any obligation to make such changes and modifications on Webstone products previously or subsequently sold.

5240Spec_090811