

THIS SPACE FOR DESIGNER/ENGINEER APPROVAL

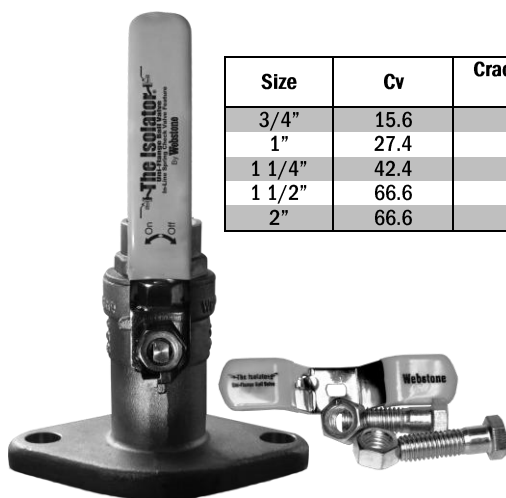
Job/Customer _____	Date _____	Contractor _____
Model Specified _____	Qty _____	Approved By _____
Designer/Engineer _____	Date _____	Contractor's PO# _____
Submitted by _____	Date _____	Other _____

4240 Series

**Full Port Forged Brass Uni-Flange Ball Valves
w/ Replaceable Integral Spring Check
Bonus Wing Style "T" Handle, Nuts & Bolts
IPS x Flange
600 WOG – 150 PSI @ 200°F - ISO 9001**



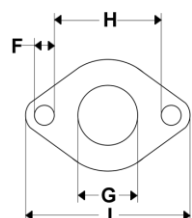
ITEM #	SIZE	CTN	CASE	A	B	C	D	E	F	G	H	I
42403	3/4"	1	10	3/4	3 1/4	2 1/4	4	3/8	1/2	1	2 11/16	4 1/8
42404	1"	1	10	1	4 1/16	2 1/2	4 5/8	3/8	1/2	1 1/4	2 11/16	4 1/8
42405	1 1/4"	1	10	1 1/4	4 15/16	2 15/16	4 5/8	3/8	1/2	1 9/16	2 11/16	4 1/8
42406	1 1/2"	1	10	1 1/2	4 15/16	3 3/8	5 1/2	3/8	1/2	1 15/16	2 11/16	4 1/8
HV MODELS FIT BOTH STANDARD & HIGH VELOCITY PUMPS												
42404HV	1"	1	10	1	4 1/16	2 1/2	4 5/8	3/8	5/8	1 1/4	2 11/16	4 1/8
42405HV	1 1/4"	1	10	1 1/4	4 15/16	2 15/16	4 5/8	3/8	5/8	1 9/16	2 11/16	4 1/8
42406HV	1 1/2"	1	10	1 1/2	4 15/16	3 3/8	5 1/2	3/8	5/8	1 15/16	2 11/16	4 1/8



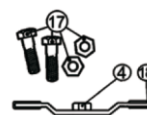
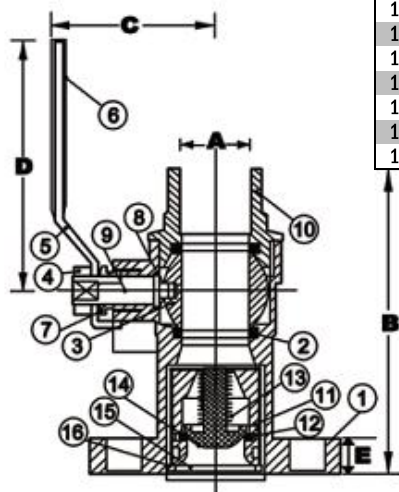
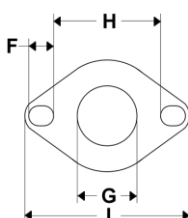
Size	Cv	Cracking Pressure (PSI)	Recommended Flow Range (gpm)
3/4"	15.6	0.22	9-30
1"	27.4	0.15	16-50
1 1/4"	42.4	0.16	23-80
1 1/2"	66.6	0.17	55-120
2"	66.6	0.17	55-120

NO.	DESCRIPTION	MATERIAL
1	FLANGED BODY	BRASS
2	SEATS	PTFE
3	BALL	BRASS HCP
4	HANDLE NUT	BRASS
5	LEVER HANDLE	STEEL CP
6	HANDLE JACKET	VINYL
7	PACKING GLAND	BRASS
8	STEM SEAL	PTFE
9	STEM	BRASS
10	END CAP	BRASS
11	CHECK VALVE BODY	ABS
12	O-RING - INNER SEAL	NBR
13	SPRING	STAINLESS STEEL 316
14	POPPET	ABS
15	O-RING - OUTER SEAL	ABS
16	RETAINING RING	STAINLESS STEEL 316
17	FLANGE BOLTS & NUTS	STEEL ZP
18	WING STYLE "T" HANDLE	STEEL CP W/ VINYL GRIPS

FLANGE FOR REGULAR MODELS



FLANGE FOR HIGH VELOCITY PUMP MODELS



TEMP °F	PSI
100	150
150	150
200	150
250	N/A
300	N/A
350	N/A
366	N/A

Specifications: Designed for residential, commercial or industrial use with water or a glycol mixture with circulator pumps without integral checks. The valve operates in a horizontal or vertical position. This approved Webstone valve is actuated by a blowout proof stem and features an adjustable packing gland. Threaded ends comply with ANSI B1.20.1

Webstone
VALVE INNOVATION

Quality and Commitment Since 1954

www.webstonevalves.com • P: (800) 225-9529 • F: (800) 336-5133

Webstone product specifications in U.S. customary units are approximate and are provided for reference only. Webstone reserves the right to change or modify product design, construction, specifications or materials without prior notice and without incurring any obligation to make such changes and modifications on Webstone products previously or subsequently sold.

4240spec_090811