

SharkBite® Temperature & Pressure Gauges

DESCRIPTION

The SharkBite® temperature and pressure gauges are used to measure water conditions in domestic potable water and radiant heating systems.

FEATURES AND BENEFITS

Instant push-fit connection for increased ease-of use:

No soldering, clamps, unions, or glue required.

Gauges can be installed as a reusable or permanent device.

SharkBite® push-fit fitting fits copper tubing, and CTS CPVC and PEX:

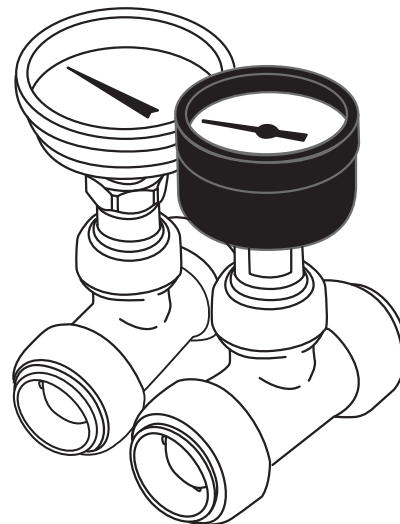
Connects all three types in any combination.

SharkBite® push-fit fitting is design certified to ASSE 1061/NSF 61 product standard for use in potable water and hydronic heating water distribution:

Quality engineered and manufactured.

SharkBite® push-fit fitting contains integral tube liner for PEX installations:

Integrated design means no loose components, ensures secure, reliable connection.

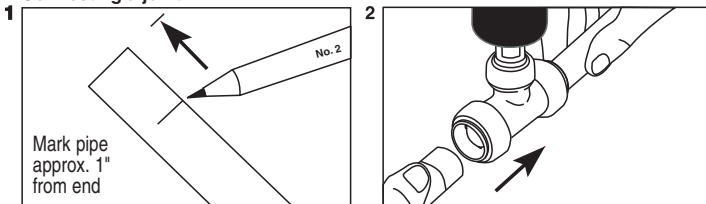


SPECIFICATION

The SharkBite® Temperature and Pressure Gauges are designed for use with SharkBite® push-fit fittings. The tube assembly shall be inserted into the fitting. In the first stage through a release collar and then through a stainless steel grab ring. The grab ring has teeth that open out and grip onto the tube. At the second stage the tube shall be pushed through an O-ring protector which aligns the tube. A specifically formulated EPDM O-ring shall be compressed between the wall of the fitting and the tube before the end of the tube reaches the tube stop. Only when the tube has passed through the O-ring and reached the tube stop shall a secure joint be created. The gauge shall be a **SharkBite® Gauge**.

TYPICAL INSTALLATION

Connecting a joint:

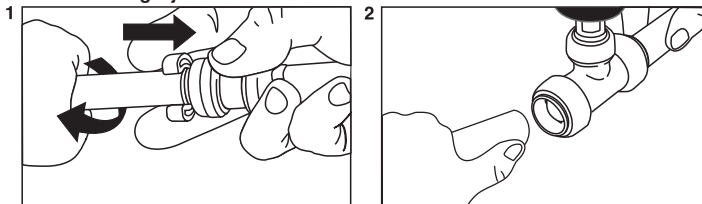


Push the pipe firmly with a twisting action until it clicks.

Allow 1" clearance between the fitting and the wall for disconnection.

(Please consult with local plumbing codes concerning specific water heater piping requirements.)

Disconnecting a joint:



Push the disconnecting clip against the release collar and pull the pipe with a twisting action.

CERTIFICATIONS

The SharkBite® push-fit fittings have been design certified and listed to ASSE1061/NSF 61. The SharkBite® push-fit fittings are listed by IAPMO and are certified for potable and hydronic heating water distribution (note: Glycol mixture for hydronics is not to exceed 50% concentration). The SharkBite® push-fit fittings have been certified for underground applications and as a manufactured joint without access panels and they meet UPC, IPC and cUPC requirements

SharkBite® Temperature & Pressure Gauges

SPECIFICATION DATA

Performance:

Maximum pressure 200psi
 Maximum temperature (w/Tee) 200°F
 Maximum temperature (without Tee) 250°F
 Service Potable water

Tee Materials:

Body DZR brass
 O-ring EPDM
 Grab ring Stainless steel
 Tube support liner Polysulfone

Pressure Gauge Materials and Performance:

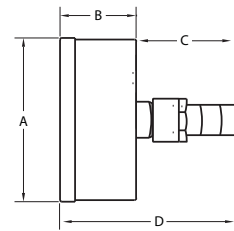
Case Drawn steel, black finished.
 Ring Drawn steel, black finished.
 Lens Acrylic.
 Dial Aluminum, white finished with black markings.
 Pointer Black, non-adjustable.
 Movement Brass with precision-milled teeth.
 Tube & Socket Brass
 Accuracy ±3% (ASME B40.100 Grade B).
 Process Temperature -40° to 150°F
 Ambient Temperature -40° to 140°F
 Pressure Range 0 to 200psi

Temperature Gauge Materials:

Case & Ring Hermetically sealed 300 series stainless steel.
 Lens Double strength glass standard, with polycarbonate.
 Dial Aluminum with white finish and black markings.
 Stem 300 series stainless steel, 0.250".
 Temperature range 0°F to 250°F
 Accuracy ±1% full range
 Ambient Temperature -40 to 250°F

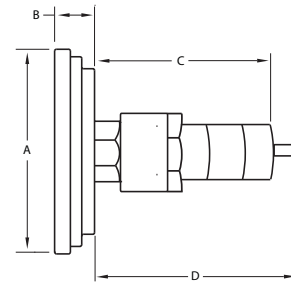
CONNECTIONS

1/2" Pressure Gauge with SharkBite® tee (22770)
 1/2" Temperature Gauge with SharkBite® tee (22771)
 3/4" Pressure Gauge with SharkBite® tee (22772)
 3/4" Temperature Gauge with SharkBite® tee (22773)
 1" Pressure Gauge with SharkBite® tee (22774)
 1" Temperature Gauge with SharkBite® tee (22775)
 1/2" Pressure Gauge with tube assembly (22883)
 1/2" Temperature Gauge with tube assembly (22884)
 3/4" Pressure Gauge with tube assembly (22885)
 3/4" Temperature Gauge with tube assembly (22886)



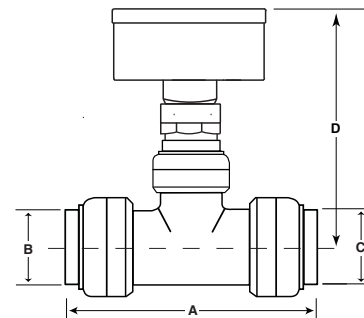
Pressure Gauge Dimensions

Part Number	Size	Dial Size	A	B	C	D
22883	0.625	1 1/2"	1.5	1.00	1.45	3.00
22885	0.825	1 1/2"	1.5	1.00	1.45	3.18



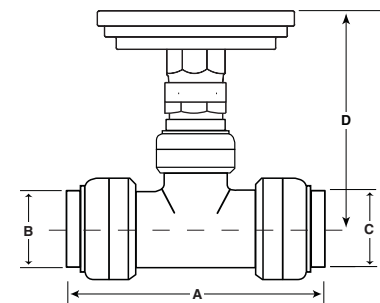
Temperature Gauge Dimensions

Part Number	Size	Dial Size	A	B	C	D
22884	0.625	2"	2.15	0.675	1.597	2.462
22886	0.825	2"	2.15	0.675	1.760	2.462



Pressure Gauge with Fittings Dimensions

Part Number	Size	Dial Size	A	B	C	D
22770	1/2"	1-1/2"	2.72"	1/2"	1/2"	3.000
22772	3/4"	1-1/2"	3.24"	3/4"	3/4"	3.125
22774	1"	1-1/2"	3.84"	1"	1"	3.375



Temperature Gauge with Fittings Dimensions

Part Number	Size	Dial Size	A	B	C	D
22771	1/2"	2"	2.72"	1/2"	1/2"	3.000
22773	3/4"	2"	3.24"	3/4"	3/4"	3.125
22775	1"	2"	3.84"	1"	1"	3.375