

**Save Time
and Energy!**

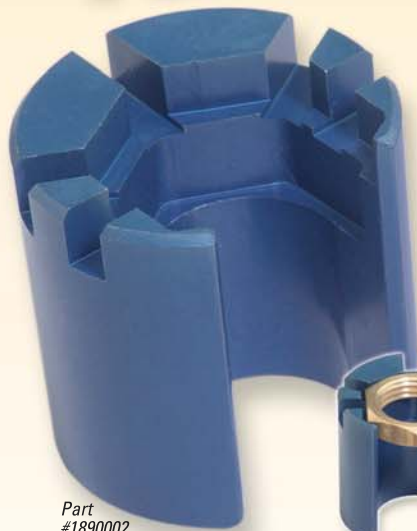
NEW!

Basin Buddy[®]

UNIVERSAL Faucet Nut Wrench

Stop fumbling with traditional basin wrenches trying to access hard-to-reach faucet nuts!

**Spend
Less Time
Under The Sink!**



Part #1890002



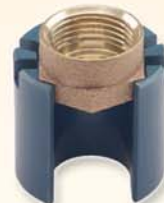
Metal Locknuts



Coupling Nuts



PVC Locknuts



Metal Ballcock Nuts



Includes
3/8" Ratchet
Adapter

One Tool Does It All! Order Yours Today!

Available **EXCLUSIVELY** from Wal-Rich!



WAL-RICH
CORPORATION

Call **800-221-1157**
www.wal-rich.com

97-36 43rd Avenue, Corona, NY 11368 • Fax: 718-672-0018

MADE IN USA

Patent #6701807

Ratchet Sold Separately





SPECIALTY TOOLS



GENUINE CHANNELLOCK® TONGUE & GROOVE PLIERS

W-R#	Size	Channellock#	Box
CL002	6 1/2"	426	6
CL004	9 1/2"	420	6
CL006	10"	430	6
CL008	12"	440	6
CL010	16"	460	6



GENUINE CHANNELLOCK® SMOOTH-JAW PLIERS

W-R#	Size	Channellock#	Box
CL012	10"	415	6



GENUINE CHANNELLOCK® "V-JAW" PLIERS

W-R#	Size	Channellock#	Box
CL014	10" "V-Jaw"	432	6
CL016	12" Curve Jaw	442	6



GENUINE CHANNELLOCK® WIRING TOOL

W-R#	Size	Channellock#	Box
CL502	Wiring Tool	908	6



GENUINE CHANNELLOCK® CUTTING PLIERS

W-R#	Size	Channellock#	Box
CL302	7" Cutting Pliers	337	6



GENUINE CHANNELLOCK® CABLE CUTTERS

W-R#	Size	Channellock#	Box
CL304	Cable Cutter	911	6



GENUINE CHANNELLOCK® LONG-NOSE PLIERS

W-R#	Size	Channellock#	Box
CL402	7 1/2" Long Nose	317	6

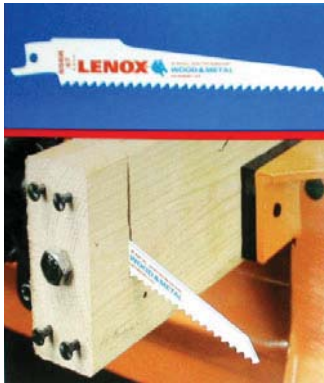


GENUINE CHANNELLOCK® CRIMPING TOOL

W-R#	Size	Channellock#	Box
CL504	Crimping Tool	909	6



SPECIALTY TOOLS



**LENOX® BI-METAL
RECIPROCATING SAW
BLADES - METAL**

W-R#	Length x TPI	Thick	Lenox#	Box
LX102	4" x 18T	.035	418R	5
LX104	6" x 10T	.035	610R	5
LX106	6" x 14T	.035	614R	5
LX108	6" x 18T	.035	618R	5
LX110	6" x 24T	.035	624R	5

**LENOX® BI-METAL
RECIPROCATING SAW
BLADES - WOOD**

W-R#	Length x TPI	Thick	Lenox#	Box
LX120	6" x 6T	.050	656R	5
LX122	8" x 10T	.050	810R	5
LX124	9" x 6T	.050	956R	5



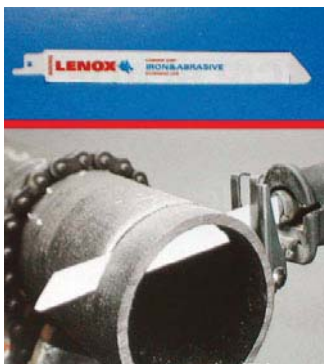
**LENOX® LAZER™
SAW BLADES - HEAVY
METAL**

W-R#	Length x TPI	Thick	Lenox#	Box
LX204	6" x 18T	.042	6118R	5
LX206	9" x 14T	.042	9114R	5
LX208	9" x 18T	.042	9118R	5



**LENOX®
RECIPROCATING SAW
BLADES - DEMOLITION**

W-R#	Length x TPI	Thick	Lenox#	Box
LX302	9" x 6T	.062	966R	5
LX304	9" x 10T	.062	960R	5

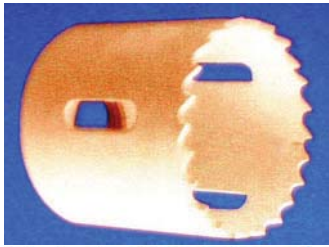


**LENOX® MASTER-GRIT™
RECIPROCATING SAW
BLADES - CAST-IRON**

W-R#	Length x TPI	Thick	Lenox#	Box
LX306	8" x 6T	.040	800RG	2



SPECIALTY TOOLS



LENOX® BI-METAL HOLE SAWS

W-R#	Diameter	Lenox#	Box
LX410	1 1/2"	24L	1
LX412	1 5/8"	26L	1
LX414	1 3/4"	28L	1
LX416	1 7/8"	30L	1
LX418	2"	32L	1
LX420	2 1/4"	36L	1
LX422	2 1/2"	40L	1
LX424	2 5/8"	42L	1
LX426	3"	48L	1
LX428	3 1/2"	56L	1
LX430	4 1/8"	66L	1



LENOX® HOLE SAW ARBORS

W-R#	Description	Lenox#	Shank	Box
LX502	2L Arbor	2L	1/2"	1
LX504	4L Arbor	4L	3-side	1
LX506	6L Arbor	6L	3/8"	1

LX502 (2L) LX504 (4L) LX506 (6L)



LENOX® ARBOR ADAPTERS

W-R#	Description	Lenox#	Box
LX512	AA1 Adapter	AA1	5



LENOX® PILOT DRILLS

W-R#	Description	Lenox#	Box
LX514	1/4" Pilot Drill	4321	5



LENOX® ARBOR EXTENSIONS

W-R#	Description	Lenox#	Box
LX508	5 1/2"	55X	1
LX510	12"	12X	1





SPECIALTY TOOLS



LENOX® PVC SAW

W-R#	Description	Lenox#	Box
LX702	18" PVC Saw	HSF18	1
LX704	18" Blade only	HSB18	1



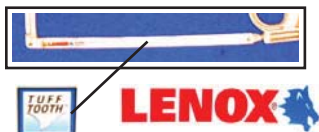
LENOX® 4012 HIGH-TENSION HACKSAW FRAME

W-R#	Description	Lenox#	Box
LX708	4012 Hacksaw	4012	1



LENOX® 2012 LIGHTWEIGHT HACKSAW FRAME

W-R#	Description	Lenox#	Box
LX706	2012 Hacksaw	2012	1



LENOX® BI-METAL HACKSAW BLADES

W-R#	Description	Lenox#	Box
LX602	10" x 24T	024H	5
LX604	10" x 32T	032H	5
LX606	12" x 24T	224H	5
LX608	12" x 32T	232H	5



QUICKBLADE® DUAL-BLADE CUTTER

W-R#	Description	Min	Box
1812700	Quickblade®	1	6



- Reduces fatigue
- Precision cuts against a straight edge
- Ergonomic shape
- Adjustable blade depth
- Non-slip rubber grip
- Replacement blade compartment



Closed Position



Razor Mode



Hook Mode

SPECIALTY TOOLS



“SAFETY-GRIP” UTILITY KNIFE



W-R#	Description	Min	Box
1812108	Safety-Grip	1	6



HEAVY-DUTY BLADES FOR UTILITY KNIFE

W-R#	Description	Min	Box
1812102	Blades	5	100



“SNAP-OFF” BREAKAWAY UTILITY KNIVES

W-R#	Description	Min	Box
1812104	Standard	1	12



MINI HACKSAW

W-R#	Description	Min	Box
1812208	Mini Hacksaw	1	10

MINI HACKSAW BLADES

W-R#	Description	Min	Box
1812210	Blades	10	100



PIPE TAPS

W-R#	Description	Drill Size	Box
1820002	1/8"	11/32"	5
1820004	1/4"	7/16"	5
1820006	3/8"	9/16"	5
1820008	1/2"	3/4"	1
1820010	3/4"	7/8"	1
1820012	1"	1 1/8"	1
1820014	1 1/4"	1 1/2"	1
1820016	1 1/2"	1 3/4"	1
1820018	2"	2 1/4"	1



SCREW EXTRACTORS

W-R#	Description	Drill Size	Box
1843002	#4 -- 1/8"	1/4"	5
1843004	#5 -- 1/4"	17/64"	5
1843006	#6 -- 3/8"	13/32"	1
1843008	#7 -- 1/2"	17/32"	1
1843010	#8 -- 3/4"	13/16"	1
1843012	#9 -- 1"	1 1/8"	1

SPECIALTY TOOLS



**INTERNAL PIPE
WRENCH**

W-R#	Description	Min	Box
1818122	1/2"	1	6
1818124	3/4"	1	6

- Tool to remove nipples, eccentric action grips inside of pipe.



**IRWIN SPEEDBOR
'2000'® WOOD
BORING BITS**



“Lock’n Load”
Quick-Change
System



W-R#	Description	Irwin #	Min	Box
1812514	5/8"	88810	1	6
1812518	3/4"	88812	1	6
1812522	7/8"	88814	1	6
1812526	1"	88816	1	6
1812528	1 1/8"	88818	1	6
1812530	1 1/4"	88820	1	6
1812532	1 3/8"	88822	1	6
1812534	1 1/2"	88824	1	6

W-R#	Description	Irwin #	Box
1812540	6" Old-Style	88702	1
1812538	12" Old-Style	88601	1
1812544	6" Lock'n Load	90106	1
1812542	12" Lock'n Load	90112	1



**COPPER TUBE
BENDING SPRINGS**

W-R#	Description	Min	Box
1806002	1/4" O.D.	1	6
1806004	3/8" O.D.	1	6
1806006	1/2" O.D.	1	6
1806008	5/8" O.D.	1	6
1806010	7/8" O.D.	1	6

• For bending supply lines and copper tubing.



**PROFESSIONAL
RATCHETING COPPER
TUBING CUTTER**

W-R#	Description	Min	Box
1807026	1/4" - 2"	1	6
1807028	1/4" - 2 5/8"	1	1
1807030	Wheel only	1	1

- Spring loaded cutter wheel arm allows slide action size adjustment and quick release
- Aluminum alloy body
- Extra wheel

SPECIALTY TOOLS



**PROFESSIONAL
MINI-TUBING CUTTER**

W-R#	Description	Min	Box
1807020	5/8"-1 1/8"	1	6
1807030	Wheel only	1	1

- Aluminum alloy body
- Extra wheel



**ECONOMY COPPER
TUBE CUTTER**

W-R#	Description	Min	Box
1807002	1/8" - 1"	1	6



**ECONOMY MIDGET
COPPER TUBE CUT-
TER**

W-R#	Description	Min	Box
1807004	1/8" - 7/8"	1	6



**"CROWN-RATCH"
CUTTER**

W-R#	Description	Min
1807005	1/4" - 7/8"	1

- Economical alternative to original RATCH-CUT.



PVC PIPE CUTTER

W-R#	Description	Min	Box
1812028	1" Sch 40 Cutter	1	6

- Ratchet action
- Cuts up to 1" Sch. 40 PVC pipe
- Cuts up to 1 1/4" PVC Tubular



PEX TUBING CUTTER

W-R#	Description	Min	Box
1812040	1 1/2" OD	1	6

- Sharp cutting edge for PEX & vinyl tubing

SPECIALTY TOOLS



“QUICK-DRAW” PVC SAW



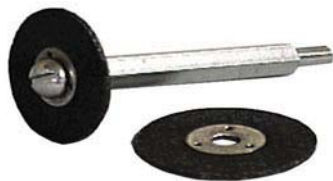
W-R#	Description	Min	Box
1812302	“Quick Draw”	1	12
1812304	Blade Only	1	1



18” PVC SAW



W-R#	Description	Min	Box
1812402	18” PVC Saw	1	12
1812404	Blade Only	1	1



PVC INSIDE PIPE CUTTER

WITH ABRASIVE CUTTER WHEEL

W-R#	Description	Min	Box
1812030	Abrasive Cutter	1	12
1812032	Set of 3 Wheels	1	1



WITH METAL CUTTER WHEEL



W-R#	Description	Min	Box
1812070	Metal Blade	1	12



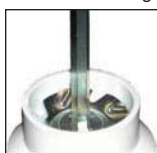
PVC CABLE SAW

W-R#	Description	Min	Box
1812212	26” Cable Saw	1	6



“FITT’N SAVER” PVC SOCKET REAMER

1. Saw PVC flush with fitting
2. Ream remainder out to renew fitting



W-R#	Description	Min	Box
1812060	1 1/2” Fitt’n Saver	1	6
1812062	2” Fitt’n Saver	1	6
1812064	3” Fitt’n Saver	1	6
1812066	4” Fitt’n Saver	1	6

SPECIALTY TOOLS



BLOCK FLARING TOOL

W-R#	Description	Min	Box
1808004	3/16" - 5/8"	1	6
- 3/16", 1/4", 5/16", 3/8", 7/16", 1/2", 5/8"			



COPPER SWEDGE TOOL

W-R#	Description	Min	Box
1808215	3/8" - 7/8"	1	6



**WIRE-HANDLE
COPPER FITTING
BRUSH**



W-R#	Description	Min	Box
1809002	3/8"	10	100
1809004	1/2"	10	100
1809006	3/4"	10	100
1809008	1"	10	100
1809010	1 1/4"	10	100
1809012	1 1/2"	10	100
1809014	2"	10	100



**PLASTIC-HANDLE
COPPER FITTING
BRUSH**



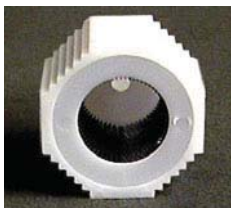
W-R#	Description	Min	Box
1811002	3/8"	10	100
1811004	1/2"	10	100
1811006	3/4"	10	100
1811008	1"	10	100
1811010	1 1/4"	10	100
1811012	1 1/2"	10	100
1811014	2"	10	100



**4-IN-1 COPPER FITTING
BRUSH**



W-R#	Description	Box
1809000	1/2" X 3/4" Brush	1



**OUTSIDE COPPER
TUBE BRUSH**



W-R#	Description	Min	Box
1810002	1/2"	1	6
1810004	3/4"	1	6

SPECIALTY TOOLS



**BLUE WATERPROOF
EMERY CLOTH**

W-R#	Description	Min	Box
1835000	5 yard	1	25
1835002	10 yards	1	25
1835004	25 yards	1	25

- 1½" Wide, 120 grit



**OPEN-MESH GRIT
CLOTH**

W-R#	Description	Min	Box
1835006	5 yards	1	25
1835008	10 yards	1	25

- Our open mesh abrasive is a fully waterproof product coated on a synthetic nylon backing.



**"CROWN-BRITE"
ABRASIVE HAND PADS**

W-R#	Description	Min	Box
1847500	6" x 9 1/2" pad	60	60

• A quality substitute for the Scotch Brite® pad.



SCOTCH BRITE® PADS

W-R#	Description	Min	Box
1848000	6" x 9½" pad	20	60
1848001	6" x 9½" pad	60	60



**#0 INDUSTRIAL
STEEL WOOL PADS**

W-R#	Description	Min	Box
2433002	6 sleeves/ctn	1	1

- 16 large pads per sleeve
- "0" size.



DOPE BRUSH

W-R#	Description	Min	Box
1813002	3/8"	36	36



ACID BRUSHES

W-R#	Description	Min	Box
1812002	1/4"	1 gr.	1 gr.



**WOOD HANDLE CHIP
BRUSHES**

W-R#	Description	Min	Box
1814002	1"	10	10
1814006	2"	10	10

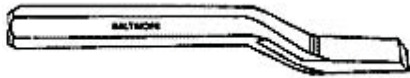
SPECIALTY TOOLS



LONG-HANDLE WIRE SCRATCH BRUSH

W-R#	Description	Min	Box
1811102	Scratch Brush	1	10

- 3 x 19 rows
- 13" long



5/8" CAULKING IRONS



W-R#	Description	Min	Box
1872002	Inside - Short	1	6
1872004	Outside - Short	1	6
1872006	Straight - Short	1	6
1872008	12" Packing Tool	1	6
1872010	16" Packing Tool	1	6



STEEL SOLDER LADLE

W-R#	Description	Min	Box
1804002	3"	1	6
1804006	4"	1	6



CAST IRON SOLDER POT

W-R#	Description	Min	Box
1805006	8"	1	6



NON-ASBESTOS JOINT RUNNER



W-R#	Description	Min	Box
1823002	#1 (2" to 4")	1	6
1823004	#2 (4" to 6")	1	6
1823006	#3 (6" to 10")	1	6
1823008	#4 (10" to 14")	1	6



PLUMBERS CANDLES

W-R#	Description	Min	Box
1840002	Candles	1	120



SPARK LIGHTER

REPLACEMENT FLINTS

W-R#	Description	Min	Box
1848002	Round File	1	10
1848006	Flat File	1	10
1848004	Flint only	10	10

SPECIALTY TOOLS



**“TRIPLE-HEAD”
STRIKE LIGHTER**



W-R#	Description	Min	Box
1848010	Triple Strikers	1	10
1848012	Triple Flints	5	5



FLAME SHIELD PADS



W-R#	Description	Min	Box
1905000	12" x 12" Pad	1	12

- Fire Proof Non asbestos material protects wood and metal during sodling and brazing.
- Aluminum backing holds shape
- Working temp: 2500 °F



B-TANK KEYS



W-R#	Description	Min	Box
1701210	B-Tank Key	12	12



**“My-KEY” SNAP-ON
B-TANK KEYS**

W-R#	Description	Min	Box
1885002	“My-Key” B-Tank key	12	12



KWICK-WICK SPOOLS



W-R#	Description	Min	Box
1906004	Spool	25	400

- Individual spools of single strand wicking for packing in threaded joints.



LAMPWICK BALLS



W-R#	Description	Min	Box
1906018	2 oz. Fine	12	12
1906020	2 oz. Medium	12	12



DUCT TAPE



W-R#	Description	Min	Box
2426002	2" x 60 yds-Gray	1	24
2426003	2" x 60 yds-Black	1	24



ELECTRICAL TAPE

W-R#	Description	Min	Box
1841002	3/4" x 60'	1	10

SPECIALTY TOOLS



**RED RUBBER
SQUARE-PAK**



W-R#	Description	Min	Box
1910002	6" x 6"	12	12
1910004	12" x 12"	10	10

- 1/16" thick red SBR rubber.

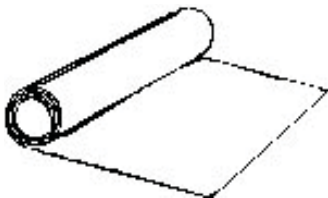


**RED RUBBER
PACKING SHEET**



W-R#	Description	Min
1909002	1/16" thick	100 lbs
1909014	1/8" thick	100 lbs

- Roll dimensions: 3' x 27'
-20 to 170° Farenheit



**HIGH-TEMPERATURE
GASKETING MATERIAL**



W-R#	Description	Min
1904002	60" x 60"	1
1904004	30" x 30"	1

- 1/16" Thick
- Non asbestos pressed fiber
- Rated at up to 1200°F



**BROWN JERSEY
WORK GLOVES**

W-R#	Description	Min	Box
1839002	Brown Jersey	1 dz	12 dz



**BLACK-DOT
WORK GLOVES**



W-R#	Description	Min	Box
1839012	Black Dots	1 dz	12 dz



**"SPLATTER-PALM"
WORK GLOVES**

W-R#	Description	Min	Box
1839008	Red "Splatter"	10 pr	100 pr
1839009	Blue "Splatter"	10 pr	100 pr



LATEX GLOVES

W-R#	Description	Min	Box
1839006	Latex Gloves	50 pr	50 pr

- Size: Large



BLUE NITRILE GLOVES

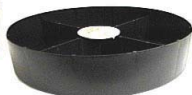
W-R#	Description	Min	Box
1839010	Nitrile Gloves	50 pr	50 pr

- Size: Large

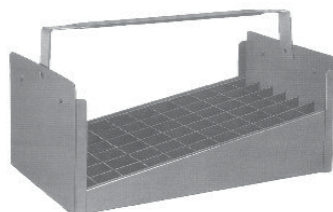
SPECIALTY TOOLS



STUFF-SORTER® ORGANIZER BUCKETS



W-R#	Description	Min	Box
1861000	Bucket with 4 trays	1	8
1861001	Cover	1	1
1861004	Shallow (3") Tray	1	1
1861006	Deep (6") Tray	1	1

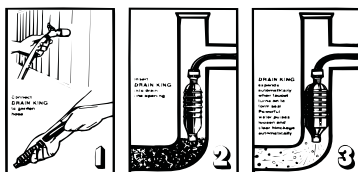


STEEL NIPPLE TRAYS

W-R#	Description	Min	Box
1871002	1/2"		
1871004	3/4"		
1871006	1"		
1871008	1 1/4"		
1871010	1 1/2"		
1871012	2"		
1871500	1/2" x 3/4"		



DRAIN-KING® DRAIN CLEANERS



W-R#	Description	Drain King#	Min
1821000	1"-2"	501	1
1821002	1 1/2" - 3"	186	1
1821003	3" - 4"	H34	1
1821004	3" - 6"	750	1



"HANDY HAND" PICK-UP TOOL

W-R#	Description	Min	Box
1824504	24"	1	6



4-PIECE DENTAL PICK SET

W-R#	Description	Min	Box
1845004	4 pc. Set	1	6

- Useful for removing stubborn o-rings, & stem packing

SPECIALTY TOOLS



**HEAVY-DUTY
CLOSET AUGER**

W-R#	Description	Min	Box
1829006	3'	1	6



**REGULAR
CLOSET AUGER**

W-R#	Description	Min	Box
1829002	3'	1	6
1829004	6'	1	6



BLOCKAGE BUSTER

W-R#	Description	Min	Box
1830002	10'	1	4
1830004	15'	1	4
1830006	25'	1	4



SINK CLEANER

W-R#	Description	Min	Box
1827502	1/4" x 1/32" x 25'	1	5



FLAT SEWER WIRE

W-R#	Description	Min	Box
1828002	25 Foot	1	4
1828004	50 Foot	1	2
1828006	75 Foot	1	2
1828008	100 Foot	1	1

- 1/2" wide x 1/16" thick
 - Oil tempered black flat spring steel. Complete with brass spear head and frame.



DRAIN AUGER

W-R#	Description	Min	Box
1831004	1/4" x 15'	1	6
1831006	1/4" x 25'	1	6



ZOOM AUGER

W-R#	Description	Min	Box
1831502	1/4" x 15'	1	4
1831504	1/4" x 25'	1	4

- One piece cork screw head. Tough plastic housing.

SPECIALTY TOOLS



**“MASTER” FORCE CUP
W/STICK**

W-R#	Description	Min	Box
1825004	W/ pullout sleeve	1	12

- 18" stick



**RUBBER FORCE CUP
W/STICK**

W-R#	Description	Min	Box
1826002	4" (9" stick)	1	12
1826004	5" (24" stick)	1	12
1826006	6" (24" stick)	1	12



**BALL-TYPE FORCE CUP
W/STICK**

W-R#	Description	Min	Box
1825002	With 24" stick	1	4



**HIGH-NECK VENT
PLUNGER W/STICK**

W-R#	Description	Min	Box
1825006	High-Neck	1	12

- Used to clear external house traps
- Popular for use in Michigan & Buffalo, NY



**GT WATERS
FLEXIBLE
MINI-SNAKE**



W-R#	Description	Min	Box
1829001	Mini-Snake	1	12

- Round polypropylene shaft won't kink or bend.



**GT WATERS
MASTER PLUNGER**



W-R#	Description	Min	Box
1825008	Blue Master	1	12

- For Toilets

1825010	Black “Shorty”	1	12
----------------	----------------	---	----

- For Sinks

SPECIALTY TOOLS



O-RING PULLER

W-R#	Description	Min	Box
1845002	5 1/4"	1	6

- For easy removal of all size "O" rings and washers.



STANDARD HANDLE PULLER

W-R#	Description	Min	Box
1824002	Standard	1	6



HAMMER-ACTION HANDLE PULLER

W-R#	Description	Min	Box
1824004	Deluxe (Hammer)	1	6

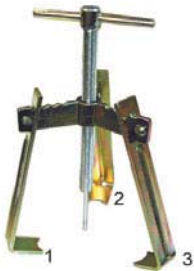
Sliding Handle provides "hammer" action



W-R "YANK-ALL" HANDLE PULLER

W-R#	Description	Min	Box
1824008	"Yank-All"	1	6

- Wider jaws fit over larger shower handles



W-R "TRI-JAW" HANDLE PULLER

W-R#	Description	Min	Box
1824010	"Tri-Jaw"	1	6

- 3 adjustable jaws to fit the most stubborn handles.



MOEN CARTRIDGE REMOVAL TOOL

W-R#	Description	Min	Box
1849000	Gold-Key	1	1

• The "Gold Key" is for the removal of both metal and plastic Moen faucet cartridges.

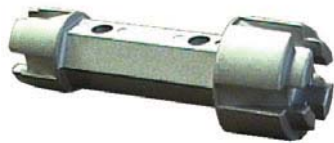


MOEN CARTRIDGE REMOVAL TOOL

W-R#	Description	Min	Box
1849001	T-handle	1	1

- An alternative to the gold key pattern for removal of plastic and brass Moen cartridges.

SPECIALTY TOOLS



CROWN TUB DRAIN WRENCH

W-R#	Description	Min	Box
1818400		1	6

- Cast Aluminum Body
- Fits most tub drains and spuds



P.O. PLUG WRENCH

W-R#	Description	Min	Box
1818004	Wrench	1	6



4-1 P.O. PLUG WRENCH

W-R#	Description	Min	Box
1818005	4 in 1 Wrench	1	6



INTERNAL SPUD WRENCH

W-R#	Description	Min	Box
1818000	Internal Wrench	1	6

- Non-Mar wrench, made of hardened steel with plastic protected shank, can be used for removal or installation of closet spuds, large and small sink strainers, waste and overflows, etc.



4-IN-1 LOCKNUT WRENCH

W-R#	Description	Min	Box
1818142	Wrench	1	6

- Fits all size closet spuds and duo locknuts.



ADJUSTABLE LOCKNUT WRENCH

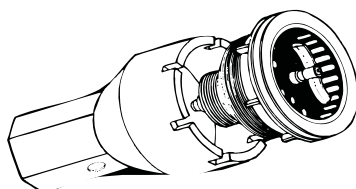
W-R#	Description	Min	Box
1818144	Locknut wrench	1	6



DUO STRAINER SPANNER WRENCH

W-R#	Description	Min	Box
1817002	Wrench	1	6

- For tightening locknut of duo strainer and sink plug. Cast Body.



CUP-TYPE DUO STRAINER WRENCH

W-R#	Description	Min	Box
1818146	Cup-Type Wrench	1	6

- High Impact Black Plastic

SPECIALTY TOOLS



SHOWER BODY SOCKET WRENCH SET

W-R#	Description	Min	Box
1818106	7 piece set	1	25

- Consists of 5 two size sockets. For use on shower valves, faucets, bibbs and basin cocks, etc. Total pieces = 7.



INDIVIDUAL SHOWER SOCKETS

W-R#	Description	Min
1818108	21/32" x 27/32"	1
1818110	29/32" x 31/32"	1
1818112	1 1/32" x 13/32"	1



HEAVY-DUTY DOUBLE-END SHOWER SOCKET WRENCH

W-R#	Description	Min
1818008	For Savoy	1
1818010	For Gerber	1
1818012	For Price Pfister	1

- For bonnet and packing bushings and behind the wall concealed bath and shower fixtures.



SEAT WRENCH

W-R#	Description	Min	Box
1818126	Straight	1	12
1818128	Angle	1	12

• A forged steel tool to exact most all sizes of faucet seats. Features smooth, tapered ends.



GERBER SEAT WRENCH

W-R#	Description	Min	Box
1818130	F/ Gerber seats	25	25



"CROWN" RATCHET SEAT WRENCH SET

W-R#	Description	Min	Box
1818134	Ratchet wrench	1	12

• A 4-piece tool that fits most faucet seats. Packed in a pouch. Features smooth, tapered ends.



TOILET SEAT NUT WRENCH

W-R#	Description	Min	Box
1817004	Nut wrench	1	6

- Fits all types of nuts used on toilet seat hinges, plastic or metal.

SPECIALTY TOOLS



**O'MALLEY
"DRIPSTOPPER"
FAUCET RESEATER**



W-R#	Description	Min	Box
------	-------------	-----	-----

1816010 Drip stopper 1 6
 • Drip stopper set includes four hardened steel cutters, faucet washers, and guide cone for repairing faucets without cap nuts.

1816011 Shower Reamer 1 6
 - Special Design for Shower seats
 - Longer shaft to enter shower body



**BRASS-CONE
BIBB REAMER**

W-R#	Description	Min	Box
------	-------------	-----	-----

1816002 Reamer 1 6
 - Furnished with extra cutting heads.



STRAP WRENCH

W-R#	Description	Min	Box
------	-------------	-----	-----

1817016 7" handle 1 6



**RUBBER STRAP
WRENCH**

W-R#	Description	Min	Box
------	-------------	-----	-----

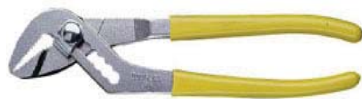
1817020 4" Rubber Strap Wrench 1 12
 - Rubber Wrench allows a firm grip and wont scratch specialty finishes.



**SOFT-JAW
WATER PUMP PLIERS**

W-R#	Description	Min	Box
------	-------------	-----	-----

1818610 10" Soft-Jaw 1 6
 - Replaceable plastic jaws do not mar chrome finish!
 - Furnished with spare set of jaws



**DOUGLAS® ANGLE
NOSE PLIERS
-YELLOW GRIPS-**



W-R#	Description	Min	Box
------	-------------	-----	-----

1818620 10" 1 6
1818630 10" Wide Jaw 1 6
 - Slip-Joint pliers with deep, self-gripping teeth

SPECIALTY TOOLS



BASIN WRENCH

W-R#	Description	Min	Box
1817006	11"	1	6
1817008	15"	1	6



**HEAVY-DUTY
ADJUSTABLE
BASIN WRENCH**

W-R#	Description	Min	Box
1817010	10" - 16"	1	6

- Display carded
- Similar to Rigid 1017!



**4-WAY
SILCOCK KEY**

W-R#	Description	Min	Box
0421004		1	10

- Fits popular make stop cocks with stems 1/4", 9/32", 5/16" and 11/32". Individually packed.



**WATER HEATER
ELEMENT WRENCH**

W-R#	Description	Min	Box
1817000	Element Wrench 1		6

- 3" length



**INSIDE DUO BASKET
WRENCH**

W-R#	Description	Min	Box
1817003	Inside Wrench	1	6

- 4" length



**RADIATOR
SPUD WRENCH**

W-R#	Description	Min	Box
1818120	Domestic	1	6
1818118	Imported	1	6



**4-1 COUNTERSUNK
PLUG WRENCH**

W-R#	Description	Min	Box
1818148	Wrench	1	6

- 3/4", 7/8", 1", 1 1/4" plugs

SPECIALTY TOOLS



NO-HUB TORQUE WRENCH

W-R#	Description	Min	Box
1818500	No-Hub Wrench 1 - 5/16" socket	1	6



CROWN DELUXE NO-HUB TORQUE WRENCH

W-R#	Description	Min	Box
1818560	60 psi Wrench 1 - 5/16" socket	1	1
1818580	80 psi Wrench 1 - 3/8" socket	1	1



NUT DRIVERS

W-R#	Description	Min	Box
1808450	1/4"	1	6
1808452	5/16"	1	6



4-1 SCREW DRIVER

W-R#	Description	Min	Box
1808402	4-1 Screwdriver 1	1	12
1808403	6 -1 Screwdriver 1	1	12

6-1 SCREW DRIVER



MAGNETIC ALUMINUM TORPEDO LEVEL



W-R#	Description	Min	Box
1858400	Level	1	12



AVIATION TIN SNIPS

W-R#	Description	Min	Box
1815002	Center Snip	1	6
1815004	Right Snip	1	6
1815006	Left Snip	1	6



TAPE MEASURES

W-R#	Description	Min	Box
1808602	1" x 25'	1	6

SPECIALTY TOOLS



**STEEL-FRAME
CAULKING GUN**

W-R#	Description	Min	Box
1840104	Steel Frame	1	12



**STANDARD
CAULKING GUN**

W-R#	Description	Min	Box
1840102	Barrel Style	1	12



POINTING TROWELS

W-R#	Description	Min	Box
1808900	7" Trowel	1	10
1808899	5" Trowel	1	10

- Philadelphia Pattern



**MILWAUKEE BLADE
CLAMP KIT**



W-R#	Description	Min	Box
1812400	Blade Clamp Kit 1		10

- OEM Part
- Contains Blade Clamp, Screw, and Hex Key
- For use with Sawzall 6507, 8, 11 and 12



NYLON CABLE TIES



W-R#	Description	Min	Box
1847004	4"	100	100
1847007	7"	100	100
1847011	11"	100	100



RUBBER TIE DOWNS



W-R#	Description	Min	Box
1846000	15"	1	20
1846002	21"	1	20
1846004	31"	1	20
1846006	41"	1	20



PAINT CRAYONS



W-R#	Description	Min	Box
1812500	Yellow	1	1

- Sold by the dozen only, no broken dozens

SPECIALTY TOOLS



INDUSTRIAL KRYPTON FLASHLIGHT

W-R#	Description	Min	Box
1804000	Flashlight	1	6

- 2 D Batteries not included



DROP LIGHTS



W-R#	Description	Min	Box
1802020	16/3 25 ft.	1	6
1802022	16/3 50 ft.	1	6

- Metal Cage
- U.L. Approved
- Orange rubber insulation



ROUGH SERVICE LIGHT BULBS

W-R#	Description	Min	Box
1802100	75 Watt	6	48
1802102	100 Watt	6	48



EXTENSION CORDS



W-R#	Description	Min	Box
1802000	16/3 50 ft.	1	6
1802002	16/3 25 ft.	1	6
1802004	12/3 25 ft.	1	6
1802006	12/3 50 ft.	1	4
1802008	12/3 100 ft.	1	2

- U.L. approved
- Orange rubber insulation



ALKALINE BATTERIES

W-R#	Description	Min	Box
1819002	"D"	12	12
1819004	"C"	12	12
1819006	"AA"	24	24
1819008	"AAA"	24	24

SPECIALTY TOOLS



CLEAR SPECTACLES

W-R#	Description	Min	Box
1839512	Clear	1	12

- 100% Impact resistant
- Absorbs 99% UV light



PROTECTIVE EYE GUARD

W-R#	Description	Min	Box
1839510	Vinyl Goggles	1	12



3" X 1000' CAUTION TAPE

W-R#	Description	Min	Box
2426006	3" x 1000'	1	12



DISPOSABLE DUST MASKS

W-R#	Description	Min	Box
1839502	5 per bag	5	50
1839503	50 per box	1 bx	12



LATEX GLOVES

W-R#	Description	Min	Box
1839006	Latex Gloves	50 pr	50 pr

- Size: Large



BLUE NITRILE GLOVES

W-R#	Description	Min	Box
1839010	Nitrile Gloves	50 pr	50 pr

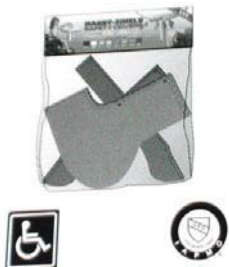
- Size: Large



**PLUMBEREX®
ADA-APPROVED
UNDERSINK
PROTECTIVE COVERS**

W-R#	Description	Min	Box
1863002	White Trap Gear 1		6

- "Trap Gear" set includes covers for trap, 2 stops, and 2 risers.
- Vinyl cover insulates P-trap & risers to make existing installation ADA compliant.



Easy to install Velcro closure