

Basic Digital Snow Melt Control II

Applications

The Viega Basic Digital Snow Melt Control II provides automatic snow melt system activation with slab high limit. This control senses low air temperature and precipitation to activate the snow-ice melting system. A slab sensor prevents overheating of the slab. Equipped with a timer switch for manual activation.

Features

- Snow melting by demand only
- Automatic snow melt activation
- Manual override
- Senses both temperature and precipitation
- Simple installation and programming
- Large digital LCD display
- Reliable, economical

Specifications

Digital Setpoint Control II

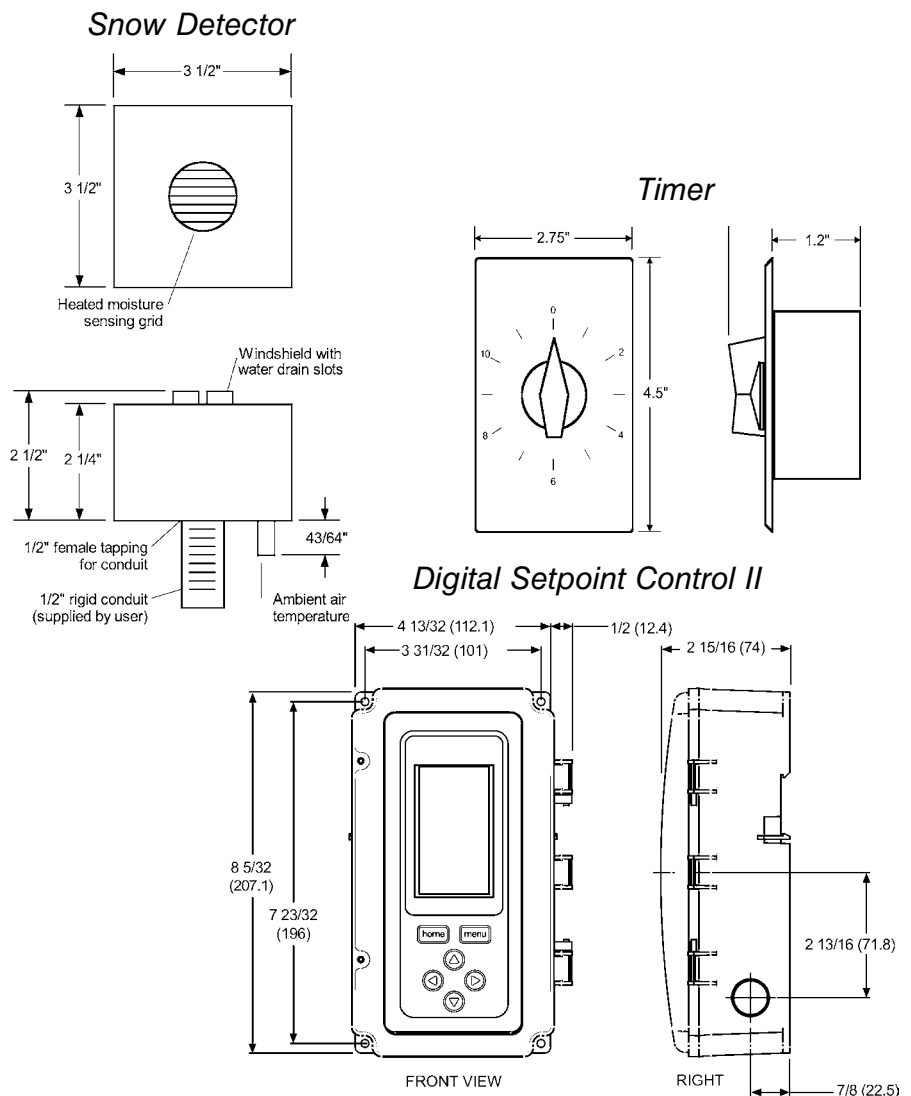
Input: 24VAC
Output: 2 sets of SPDT dry contacts, 1/2 hp @ 120VAC
9.8 FLA, 58.8 LRA
Environment: -40 - 140°F
5 to 95% rH, non-condensing
Power draw: 8 VA
Dimensions: 4.91 x 8.16 x 2.37 in.

Timer

Input: 12 to 120V, 20A
Range: 2 to 12 hours
Dimensions: 2.75 x 4.5 x 1.2 in.

Snow Detector

Input: 24VAC
Output: 24VAC signal to relay
Power draw: 2.5 watts (2.5VA)
Dimensions: 3.5 x 3.5 x 2.5 in.



Stock code # 17023

Viega... The global leader in plumbing, heating and pipe joining systems

301 N. Main, 9th Floor • Wichita, KS 67202 • Ph: 800-976-9819 • Fax: 316-425-7618 • www.viega.com

©2012, ProPress®, FostaPEX®, GeoFusion®, Seapress® MegaPress®, MegaPressG®, and Viega® are registered trademarks of Viega GmbH & Co. PureFlow®, Smart Connect®, Climate Panel®, Climate Mat®, Climate Trak®, MANABLOC®, Radiant Wizard®, S-no-Ice®, Snap Panel®, XL® and XL-C® are registered trademarks of Viega LLC. MiniBloc™, Rapid Grid™, ProRadiant™, PolyAlloy™, SmartLoop™ and Zero Lead™ are trademarks of Viega LLC; ProPressG™ and ViegaPEX™ are trademarks of Viega GmbH & Co. KG. RIDGID® is a registered trademark of RIDGID, Inc.

TD-PR-17023 0412 (Basic Digital Snow Melt Control II)