

For Residential and Commercial Applications

Job Name		Engineer / Architect	
Job Location		Wholesaler	
Submittal Date		Contractor	

1-**DL/ 3-**DL Copper Toilet Riser – One-Piece w/ Gasket Nosepiece

Use: For use in potable water distribution systems in accessible locations only.

Design Features:

- One-piece construction
- Cut to Length for professional finished appearance

Operating Specifications:

Temperature: 40° - 180° F

Pressure: 125 psi maximum

Tubing Diameter: 0.38" O.D. or 0.50" O.D.

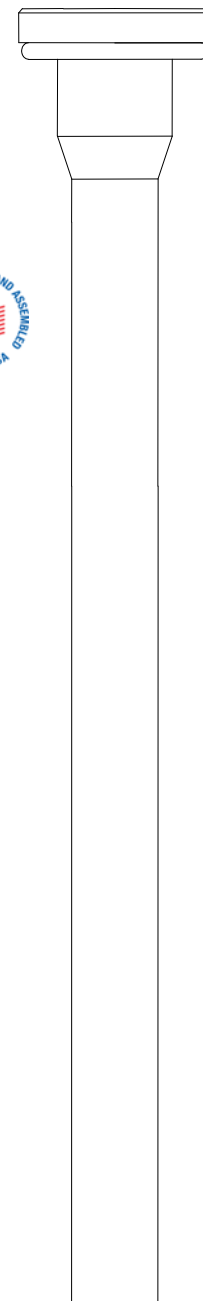


MATERIAL SPECIFICATIONS

Tube	C12200 copper per ASTM B-68
Nosepiece	POM

Part Listing:

- | | | |
|--------------------------|------------|--|
| <input type="checkbox"/> | 1-12DL C | 3/8" OD Tube x 11-1/2" Length, chrome plated |
| <input type="checkbox"/> | 1-12DL CBT | 3/8" OD Tube x 11-1/2" Length, chrome plated, plain label, bulk |
| <input type="checkbox"/> | 1-12DL CF | 3/8" OD Tube x 11-1/2" Length, chrome plated, flag label |
| <input type="checkbox"/> | 1-12DL C1 | 3/8" OD Tube x 11-1/2" Length, chrome plated, individually boxed |
| <input type="checkbox"/> | 1-12DL R | 3/8" OD Tube x 11-1/2" Length, rough finish |
| <input type="checkbox"/> | 1-12DL BZP | 3/8" OD Tube x 11-1/2" Length, oil rubbed bronze, bagged |
| <input type="checkbox"/> | 1-12DL NSP | 3/8" OD Tube x 11-1/2" Length, oil rubbed bronze, bagged |
| <input type="checkbox"/> | 1-15DL C | 3/8" OD Tube x 14-1/2" Length, chrome plated |
| <input type="checkbox"/> | 1-20DL C | 3/8" OD Tube x 19-1/2" Length, chrome plated |
| <input type="checkbox"/> | 1-20DL CBT | 3/8" OD Tube x 11-1/2" Length, chrome plated, plain label, bulk |
| <input type="checkbox"/> | 1-20DL CF | 3/8" OD Tube x 19-1/2" Length, chrome plated, flag label |
| <input type="checkbox"/> | 1-20DL C1 | 3/8" OD Tube x 19-1/2" Length, chrome plated, individually boxed |
| <input type="checkbox"/> | 1-20DL R | 3/8" OD Tube x 19-1/2" Length, rough finish |
| <input type="checkbox"/> | 1-20DL BZP | 3/8" OD Tube x 19-1/2" Length, oil rubbed bronze, bagged |
| <input type="checkbox"/> | 1-20DL NPP | 3/8" OD Tube x 19-1/2" Length, polished nickel, bagged |



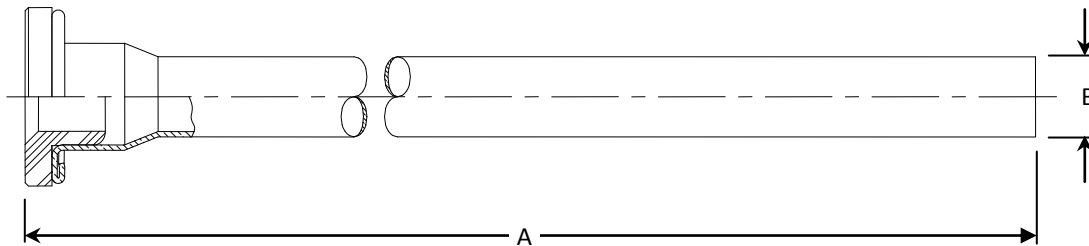
This specification and all information contained herein is the confidential and exclusive property of BrassCraft Manufacturing, and shall not be disclosed to others without the written consent of BrassCraft. This specification must be returned to BrassCraft if requested.

BrassCraft®

1-**DL/ 3-**DL Copper Toilet Riser – One-Piece w/ Gasket Nosepiece

Part Listing (con't):

<input type="checkbox"/>	1-20DL NSP	3/8" OD Tube x 19-1/2" Length, satin nickel, bagged
<input type="checkbox"/>	1-20DL PP	3/8" OD Tube x 19-1/2" Length, polished brass, bagged
<input type="checkbox"/>	1-30DL C	3/8" OD Tube x 29-1/2" Length, chrome plated
<input type="checkbox"/>	1-30DL C1	3/8" OD Tube x 29-1/2" Length, chrome plated, individually boxed
<input type="checkbox"/>	3-12DL C	1/2" OD Tube x 11-1/2" Length, chrome plated
<input type="checkbox"/>	3-12DL CBT	1/2" OD Tube x 11-1/2" Length, chrome plated, plain label, bulk
<input type="checkbox"/>	3-12DL C1	1/2" OD Tube x 11-1/2" Length, chrome plated, individually boxed
<input type="checkbox"/>	3-12DL RBT	1/2" OD Tube x 11-1/2" Length, rough finish, plain label, bulk
<input type="checkbox"/>	3-12DL-1 R	1/2" OD Tube x 11-1/2" Length, no gasket, rough finish
<input type="checkbox"/>	3-20DL C	1/2" OD Tube x 19-1/2" Length, chrome plated
<input type="checkbox"/>	3-20DL CBT	1/2" OD Tube x 19-1/2" Length, chrome plated, plain label, bulk
<input type="checkbox"/>	3-20DL C1	1/2" OD Tube x 19-1/2" Length, chrome plated, individually boxed
<input type="checkbox"/>	3-20DL-1 R	1/2" OD Tube x 19-1/2" Length, no gasket, rough finish



PART DIMENSIONS (Inches)		
Model	DIM. A	DIA. B
1-12DL	11.56	3/8
1-15DL	14.56	3/8
1-20DL	19.56	3/8

PART DIMENSIONS (Inches)		
Model	DIM. A	DIA. B
1-30DL	29.56	3/8
3-12DL	11.56	1/2
3-20DL	19.56	1/2

Listings & Certifications:

- IAPMO listed to ASME A112.18.1-2005 / CSA B125.1-2005 (File # 0645)



This specification and all information contained herein is the confidential and exclusive property of BrassCraft Manufacturing, and shall not be disclosed to others without the written consent of BrassCraft. This specification must be returned to BrassCraft if requested.

BrassCraft®