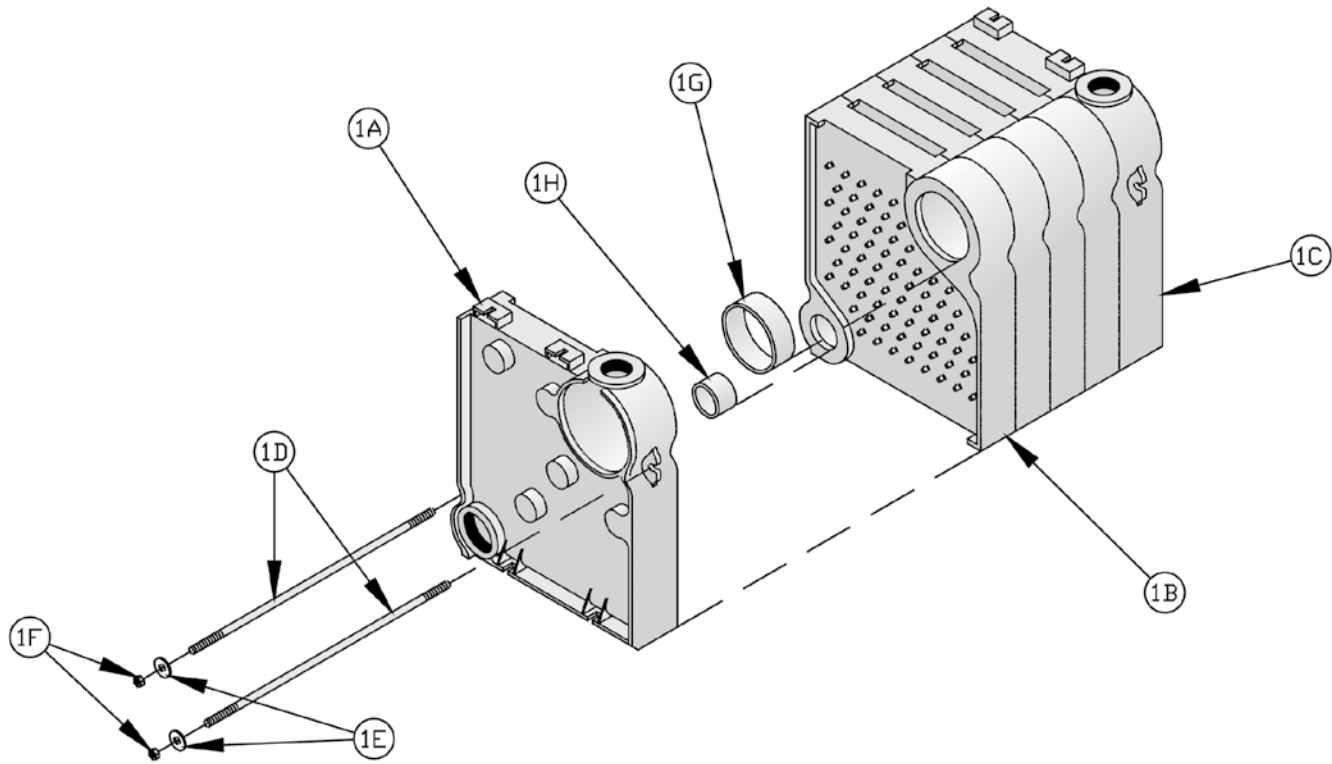

XI. Repair Parts

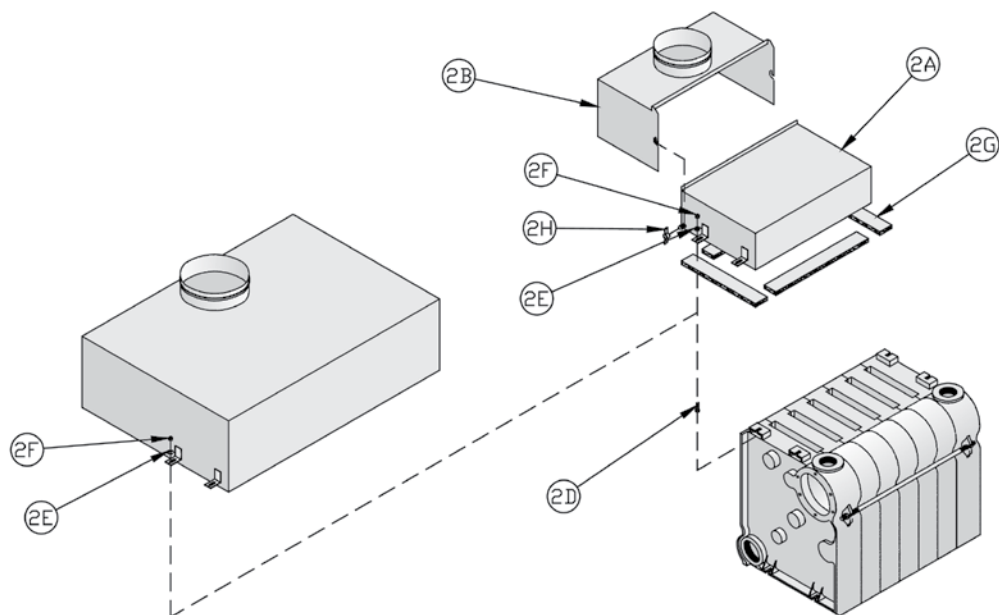
All Independence® Repair Parts may be obtained through your local Burnham product distributor. Should you require assistance in locating a Burnham product distributor in your area, or have questions regarding the availability of Burnham brand products or repair parts, please contact U.S. Boiler Company Customer Service at (717) 481-8400 or Fax (717) 481-8408.

XI. Repair Parts (continued)



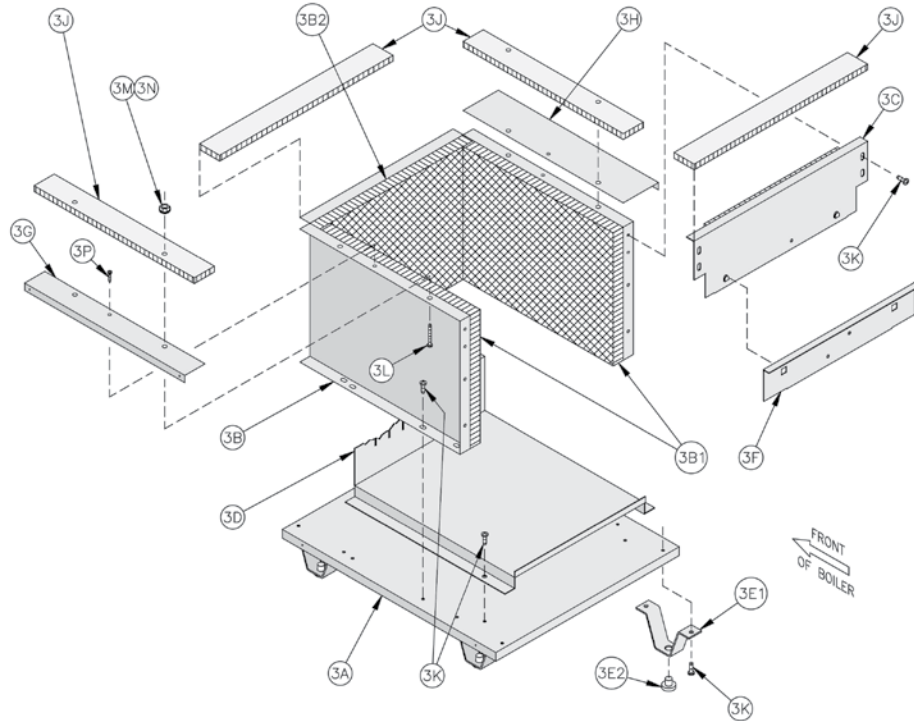
Key No.	Description	Part No.	Quantity									
			IN3	IN4	IN5	IN6	IN7	IN8	IN9	IN10	IN11	IN12
1. Section Assembly												
1A	Left End Section (less tankless heater)	717100022	1	1	1	1	1	1	1	1	1	1
	Left End Section (with tankless heater)	717100042	1	1	1	1	1	1	1	1	1	1
1B	Center Section	717100031	1	2	3	4	5	6	7	8	9	10
1C	Right End Section	717100011	1	1	1	1	1	1	1	1	1	1
1D	Tie Rod, 3/8-16 x 10"	80861071	2	---	---	---	---	---	---	---	---	---
	Tie Rod, 3/8-16 x 12-1/2"	80861010	---	2	---	---	---	---	---	---	---	---
	Tie Rod, 3/8-16 x 17"	80861011	---	---	2	---	---	---	---	---	---	---
	Tie Rod, 3/8-16 x 20-3/4"	80861012	---	---	---	2	---	---	---	---	---	---
	Tie Rod, 3/8-16 x 23"	80861049	---	---	---	---	2	---	---	---	---	---
	Tie Rod, 3/8-16 x 27-1/2"	80861014	---	---	---	---	---	2	---	---	---	---
	Tie Rod, 3/8-16 x 29"	80861034	---	---	---	---	---	---	2	---	---	---
	Tie Rod, 3/8-16 x 32-3/4"	80861035	---	---	---	---	---	---	---	2	---	---
	Tie Rod, 3/8-16 x 36-1/2"	80861036	---	---	---	---	---	---	---	---	2	---
	Tie Rod, 3/8-16 x 39"	80861020	---	---	---	---	---	---	---	---	---	2
1E	Washer, 3/8"	80860600	4	4	4	4	4	4	4	4	4	4
1F	Nut, 3/8-16	80860400	4	4	4	4	4	4	4	4	4	4
1G	Slip Nipple, 5"	7066003	2	3	4	5	6	7	8	9	10	11
1H	Slip Nipple, 22B	806600375	2	3	4	5	6	7	8	9	10	11

XI. Repair Parts (continued)



Key No.	Description	Part No.	Quantity									
			IN3	IN4	IN5	IN6	IN7	IN8	IN9	IN10	IN11	IN12
2. Canopy and Draft Hood Canopy/Draft Hood Parts												
2A	Canopy Assembly	6111003	1	---	---	---	---	---	---	---	---	---
		6111004	---	1	---	---	---	---	---	---	---	---
		6111005	---	---	1	---	---	---	---	---	---	---
		6111006	---	---	---	1	---	---	---	---	---	---
		6111007	---	---	---	---	1	---	---	---	---	---
		6111008	---	---	---	---	---	1	---	---	---	---
		6111009	---	---	---	---	---	---	1	---	---	---
2B	Rear Draft Hood Carton Assembly	61110033	1	---	---	---	---	---	---	---	---	---
		61110043	---	1	---	---	---	---	---	---	---	---
		61110053	---	---	1	---	---	---	---	---	---	---
		61110063	---	---	---	1	---	---	---	---	---	---
		61110073	---	---	---	---	1	---	---	---	---	---
		61110083	---	---	---	---	---	1	---	---	---	---
		61110093	---	---	---	---	---	---	1	---	---	---
2C	Canopy/Draft Hood Carton Assembly (complete)	61110102	---	---	---	---	---	---	---	1	---	---
		61110112	---	---	---	---	---	---	---	---	1	---
		61110122	---	---	---	---	---	---	---	---	---	1
2D	Carriage Bolt, ¼ -20 x 1"	80860115	4	4	4	4	4	4	4	4	4	4
2E	Flat Washer, ¼"	80860603	4	4	4	4	4	4	4	4	4	4
2F	Hex Nut, ¼ -20	80860407	4	4	4	4	4	4	4	4	4	4
2G	Gasket	6206001	1	1	1	1	1	1	1	1	1	1
2H	Wingnut, ¼ -20	80860900	2	2	2	2	2	2	2	---	---	---

XI. Repair Parts (continued)



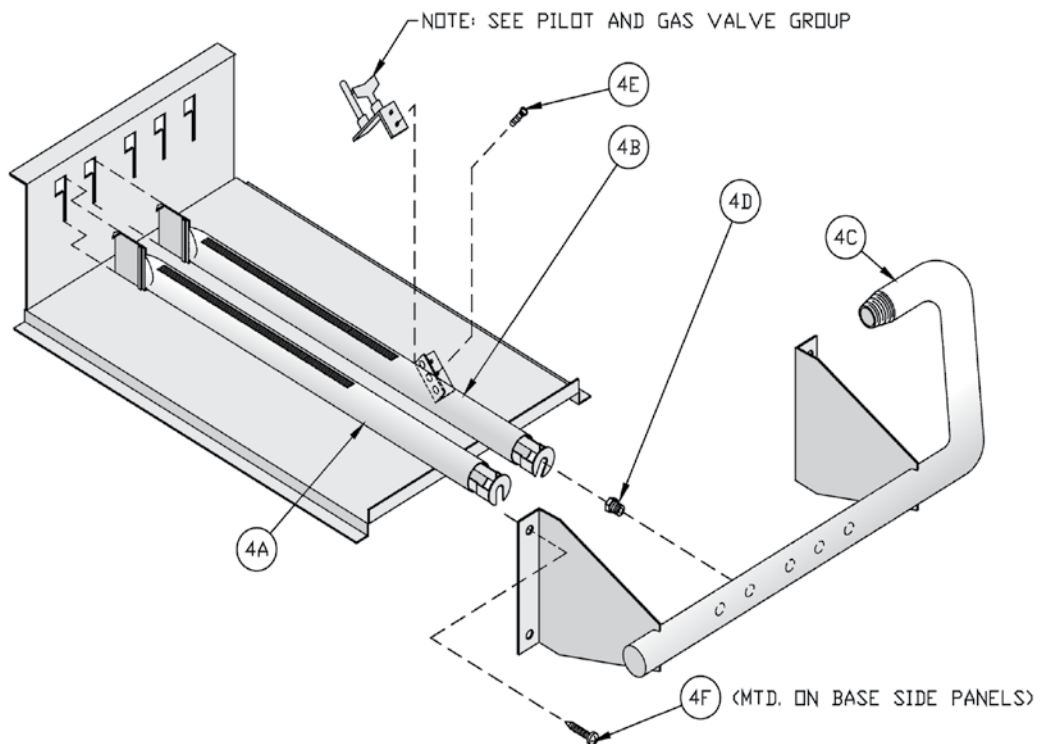
Key No.	Description	Part No.	Quantity									
			IN3	IN4	IN5	IN6	IN7	IN8	IN9	IN10	IN11	IN12
3. Base Assembly												
3A	Base Tray	718600391	1	---	---	---	---	---	---	---	---	---
		718600491	---	1	---	---	---	---	---	---	---	---
		718600591	---	---	1	---	---	---	---	---	---	---
		718600691	---	---	---	1	---	---	---	---	---	---
		718600791	---	---	---	---	1	---	---	---	---	---
		718600891	---	---	---	---	---	1	---	---	---	---
		718600991	---	---	---	---	---	---	1	---	---	---
		718601091	---	---	---	---	---	---	---	1	---	---
		718601191	---	---	---	---	---	---	---	---	1	---
		718601291	---	---	---	---	---	---	---	---	---	1
3B	Base Wrapper	718600311	1	---	---	---	---	---	---	---	---	---
		718600411	---	1	---	---	---	---	---	---	---	---
		718600511	---	---	1	---	---	---	---	---	---	---
		718600611	---	---	---	1	---	---	---	---	---	---
		718600711	---	---	---	---	1	---	---	---	---	---
		718600811	---	---	---	---	---	1	---	---	---	---
		718600911	---	---	---	---	---	---	1	---	---	---
		718601011	---	---	---	---	---	---	---	1	---	---
		718601111	---	---	---	---	---	---	---	---	1	---
		718601211	---	---	---	---	---	---	---	---	---	1
3B1	Base End Insulation	720601	2	2	2	2	2	2	2	2	2	

XI. Repair Parts (continued)

Key No.	Description	Part No.	Quantity									
			IN3	IN4	IN5	IN6	IN7	IN8	IN9	IN10	IN11	IN12
3. Base Assembly (Continued)												
3B2	Base Rear Insulation	72060035	1	---	---	---	---	---	---	---	---	---
		72060045	---	1	---	---	---	---	---	---	---	---
		72060055	---	---	1	---	---	---	---	---	---	---
		72060065	---	---	---	1	---	---	---	---	---	---
		72060075	---	---	---	---	1	---	---	---	---	---
		72060085	---	---	---	---	---	1	---	---	---	---
		72060095	---	---	---	---	---	---	1	---	---	---
		72060105	---	---	---	---	---	---	---	1	---	---
		72060115	---	---	---	---	---	---	---	---	1	---
		72060126	---	---	---	---	---	---	---	---	---	1
3C	Base Front Panel Assembly	618600341	1	---	---	---	---	---	---	---	---	---
		618600441	---	1	---	---	---	---	---	---	---	---
		618600541	---	---	1	---	---	---	---	---	---	---
		618600641	---	---	---	1	---	---	---	---	---	---
		618600741	---	---	---	---	1	---	---	---	---	---
		618600841	---	---	---	---	---	1	---	---	---	---
		618600941	---	---	---	---	---	---	1	---	---	---
		618601041	---	---	---	---	---	---	---	1	---	---
		618601141	---	---	---	---	---	---	---	---	1	---
		618601241	---	---	---	---	---	---	---	---	---	1
3D	Burner Tray (1 Inch Main Burners)	718600305	1	---	---	---	---	---	---	---	---	---
		718600405	---	1	---	---	---	---	---	---	---	---
		718600505	---	---	1	---	---	---	---	---	---	---
		718600605	---	---	---	1	---	---	---	---	---	---
		718600705	---	---	---	---	1	---	---	---	---	---
		718600805	---	---	---	---	---	1	---	---	---	---
		718600905	---	---	---	---	---	---	1	---	---	---
		718601005	---	---	---	---	---	---	---	1	---	---
		718601105	---	---	---	---	---	---	---	---	1	---
		718601205	---	---	---	---	---	---	---	---	---	1
	Burner Tray (40mm Main Burners)	71860037	1	---	---	---	---	---	---	---	---	---
		71860047	---	1	---	---	---	---	---	---	---	---
		71860057	---	---	1	---	---	---	---	---	---	---
		71860067	---	---	---	1	---	---	---	---	---	---
		71860077	---	---	---	---	1	---	---	---	---	---
		718600806	---	---	---	---	---	1	---	---	---	---
		718600906	---	---	---	---	---	---	1	---	---	---
3E	Base Leg Assembly	6186001	4	4	4	4	4	4	4	4	6	6
3E1	Base Leg [Included in Key No. 3E]	71860021	4	4	4	4	4	4	4	4	6	6
3E2	Nylon Glide [Included in Key No. 3E]	8186006	4	4	4	4	4	4	4	4	6	6

XI. Repair Parts (continued)

Key No.	Description	Part No.	Quantity									
			IN3	IN4	IN5	IN6	IN7	IN8	IN9	IN10	IN11	IN12
3. Base Assembly (Continued)												
3F	Burner Access Panel	718600361	1	---	---	---	---	---	---	---	---	---
		718600461	---	1	---	---	---	---	---	---	---	---
		718600561	---	---	1	---	---	---	---	---	---	---
		718600661	---	---	---	1	---	---	---	---	---	---
		718600761	---	---	---	---	1	---	---	---	---	---
		718600861	---	---	---	---	---	1	---	---	---	---
		718600961	---	---	---	---	---	---	1	---	---	---
		718601061	---	---	---	---	---	---	---	1	---	---
		718601161	---	---	---	---	---	---	---	---	1	---
		718601261	---	---	---	---	---	---	---	---	---	1
3G	Left End Jacket Attachment Bracket	7046011	1	1	1	1	1	1	1	1	1	1
3H	Right End Jacket Attachment Bracket	7046012	1	1	1	1	1	1	1	1	1	1
3J	Base Sealant	6206002	1	1	1	1	1	1	1	1	1	1
3K	Screw, Self Tapping, Type F, Phillips Pan Head, 1/4 -20 x 1/2", Plated	80860700	16	16	16	16	17	17	17	17	21	21
3L	Screw, Self Tapping, Type F, Hex Head, 5/16 -18 x 1-1/4", Plated	80860717	4	4	4	4	4	4	4	4	4	4
3M	Washer, 5/16, USS	80860601	4	4	4	4	4	4	4	4	4	4
3N	Hex Lock Nut, 5/16 -18	80860464	4	4	4	4	4	4	4	4	4	4
3P	Screw, Sheet Metal, #8 x 1/2"	80860000	2	2	2	2	2	2	2	2	2	2



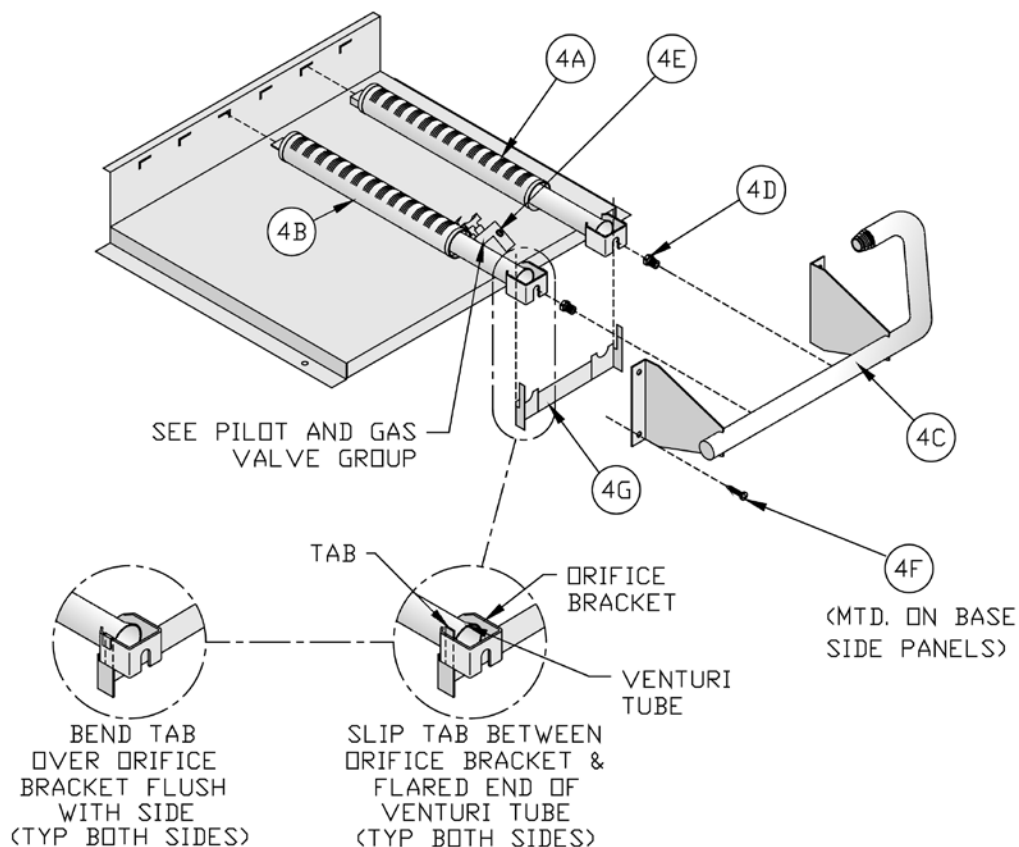
Manifold and 1" Main Burners

XI. Repair Parts (continued)

Key No.	Description	Part No.	Quantity									
			IN3	IN4	IN5	IN6	IN7	IN8	IN9	IN10	IN11	IN12
4. Manifold and Main Burners (1 Inch Main Burners Only)												
4A	Main Burner	8236099	2	4	6	8	11	13	15	17	20	22
4B	Main Burner with Pilot Bracket (Continuous Ignition) (Q350 Pilot)	8236097	1	1	1	1	1	---	---	---	---	---
	Main Burner with Pilot Bracket (Continuous Ignition) (Q327 Pilot)	8236098	---	---	---	---	---	1	1	1	1	1
	Main Burner with Pilot Bracket (Intermittent Ignition) (Q348 Pilot)	8236098	1	1	1	1	1	1	1	1	1	1
4C	Manifold	82260033	1	---	---	---	---	---	---	---	---	---
		82260043	---	1	---	---	---	---	---	---	---	---
		82260053	---	---	1	---	---	---	---	---	---	---
		82260063	---	---	---	1	---	---	---	---	---	---
		82260073	---	---	---	---	1	---	---	---	---	---
		82260083	---	---	---	---	---	1	---	---	---	---
		82260093	---	---	---	---	---	---	1	---	---	---
		82260103	---	---	---	---	---	---	---	1	---	---
		82260113	---	---	---	---	---	---	---	---	1	---
82260123	---	---	---	---	---	---	---	---	---	1		
4D Natural Gas Only	Main Burner Orifice, #45 Pink	822711	3	5	7	9	---	---	---	---	---	---
	Main Burner Orifice, #47 White	822710	---	---	---	---	12	14	16	18	21	23
4D LP Only	Main burner Orifice, #55 Green	822708	3	---	---	---	---	---	---	---	---	---
	Main Burner Orifice, 1.25 mm, Purple	822705	---	5	7	9	---	---	---	---	---	---
	Main Burner Orifice, 3/64", Blue	822704	---	---	---	---	12	14	16	---	---	---
4E	Screw, Machine, Slotted Round Head, 10-32 x 3/16"	80860800	2	2	2	2	2	2	2	2	2	2
4F	Screw, Self Tapping, Phillips Pan Head, 1/4 -20 x 1/2"	80860700	4	4	4	4	4	4	4	4	4	4

Note: Orifice Sizes shown for normal altitude (0-2000 feet). For High Altitude consult factory.

XI. Repair Parts (continued)



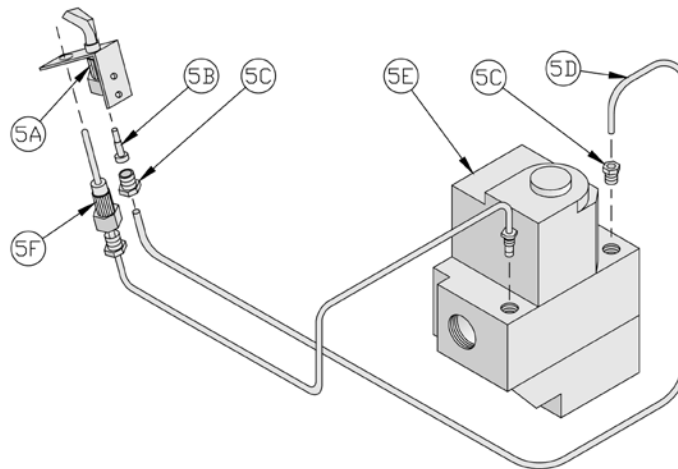
Manifold and 40mm Main Burners

Key No.	Description	Part No.	Quantity						
			IN3	IN4	IN5	IN6	IN7	IN8	IN9
4. Manifold and Main Burners (40MM MAIN BURNERS ONLY)									
4A	Main Burner	8236135	1	2	3	4	5	6	7
Intermittent Ignition Only									
4B	Main Burner with 41° Pilot Bracket	8236136	1	1	1	1	1	1	1
24-Volt Continuous Ignition (Standing Pilot) Natural Gas									
4B	Main Burner with 48° Pilot Bracket	8236143	1	1	1	1	---	---	---
	Main Burner with 41° Pilot Bracket	8236136	---	---	---	---	1	1	1
24-Volt Continuous Ignition (Standing Pilot) LP Gas									
4B	Main Burner with 41° Pilot Bracket	823136	1	1	1	1	1	1	1
4C	Manifold	82260038	1	---	---	---	---	---	---
		82260048	---	1	---	---	---	---	---
		82260058	---	---	1	---	---	---	---
		82260068	---	---	---	1	---	---	---
		82260078	---	---	---	---	1	---	---
		82260088	---	---	---	---	---	1	---
		82260098	---	---	---	---	---	---	1

XI. Repair Parts (continued)

Key No.	Description	Part No.	Quantity						
			IN3	IN4	IN5	IN6	IN7	IN8	IN9
4. Manifold and Main Burners (40MM MAIN BURNERS ONLY) Continued									
Natural Gas, High Altitude (2000-5000 Ft.) USA Only									
4D	Main Burner Orifice #39	822727	2	3	---	---	---	---	---
	Main Burner Orifice #38	822720	---	---	4	5	6	7	8
LP Gas, High Altitude (2000-5000 Ft.) USA Only									
4D	Main Burner Orifice #53	822722	2	3	4	5	6	7	8
Natural Gas, High Altitude (5000-9000 Ft.) USA Only									
4D	Main Burner Orifice #41	822729	2	3	---	---	---	---	---
	Main Burner Orifice #42	822728	---	---	4	5	6	7	8
LP Gas, High Altitude (5000-9000 Ft.) USA Only									
4D	Main Burner Orifice #54	822734	2	---	---	---	---	---	---
	Main Burner Orifice #53	822722	---	3	4	5	6	7	8
Natural Gas, High Altitude (2000-4500 Ft.) Canada Only									
4D	Main Burner Orifice #37	822719	2	---	---	---	---	---	---
	Main Burner Orifice #36	822771	---	3	4	5	6	7	8
LP Gas, High Altitude (2000-4500 Ft.) Canada Only									
4D	Main Burner Orifice #52	822721	2	3	4	5	6	7	8
4E	Screw, Machine, Slotted Round Head, #10-32 x 3/16"	80860800	2	2	2	2	2	2	2
4F	Screw, Self Tapping, Phillips Pan Head, 1/4 - 20 x 1/2"	80860700	4	4	4	4	4	4	4
4G	Injection Shield Assembly	718600362	1	---	---	---	---	---	---
		718600462	---	1	---	---	---	---	---
		718600562	---	---	1	---	---	---	---
		718600662	---	---	---	1	---	---	---
		718600762	---	---	---	---	1	---	---
		718600862	---	---	---	---	---	1	---
		718600962	---	---	---	---	---	---	1

XI. Repair Parts (continued)

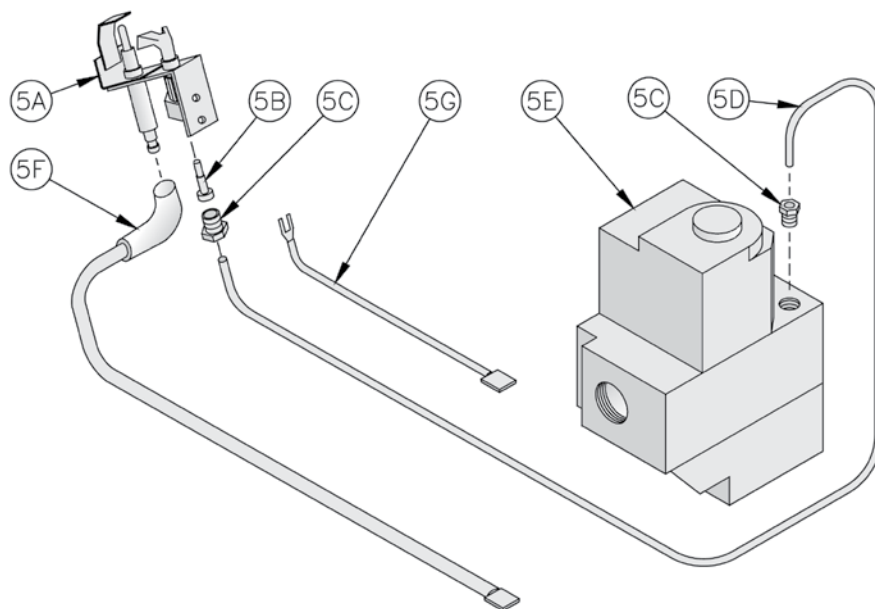


Key No.	Description	Part No.	Quantity									
			IN3	IN4	IN5	IN6	IN7	IN8	IN9	IN10	IN11	IN12
5. Pilot Burner and Gas Valve, Continuous Ignition (Standing Pilot), Natural Gas												
5A	Pilot Burner, Honeywell Q350A1321	8236065	1	1	1	1	1	---	---	---	---	---
	Pilot Burner, Honeywell Q327A1006	8236022	---	---	---	---	1**	1	1	1	1	1
5B	Pilot Orifice, Honeywell 390686-22	Included with 5A	1	1	1	1	1	---	---	---	---	---
	Pilot Orifice, Honeywell 388146AG		---	---	---	---	---	1	1	1	1	1
5C	Compression Nut/Fitting, 1/4" OD x 1/4 C.C. (Included with 5A)	8236109	2	2	2	2	2	2	2	2	2	2
5D	Pilot Tubing, 1/4" OD x 30"	8236122	1	1	1	1	1	---	---	---	---	---
	Pilot Tubing, 1/4" OD x 40"	8236123	---	---	---	---	---	1	1	1	1	1
5E	Gas Valve, Honeywell VR8200C3005	81660143	1	1	1	1	---	---	---	---	---	---
	Gas Valve, Honeywell VR8200C6065	100333-01	1**	1**	1**	1**	---	---	---	---	---	---
	Gas Valve, Honeywell VR8300C4027	81660154	---	---	---	---	1	1	1	---	---	---
	Gas Valve, Honeywell VR8300C4266	100334-01	---	---	---	---	1**	1**	1**	---	---	---
	Gas Valve, Robertshaw 7000ERHC-S7C	81660156	---	---	---	---	---	---	---	1	1	1
	Gas Valve, ITT K3A451	81660080	---	---	---	---	---	---	---	1	1	1
5F	Thermocouple, Honeywell Q309A	8236024	1	1	1	1	1	1	1	1	1	1
5. Pilot Burner and Gas Valve, Continuous Ignition (Standing Pilot), LP/Propane												
5A	Pilot Burner, Honeywell Q350A1339	8236066	1	1	1	1	1	---	---	---	---	---
	Pilot Burner, Honeywell Q327A1147	8236023	1**	1**	1**	1**	1**	1	1	---	---	---
5B	Pilot Orifice, Honeywell 390686-23	Included with 5A	1	1	1	1	1	---	---	---	---	---
	Pilot Orifice, Honeywell 388146KR		---	---	---	---	---	1	1	---	---	---
5C	Compression Nut/Fitting, 1/4" OD x 1/4 C.C. (Included with 5A and 5E)	8236109	2	2	2	2	2	2	2	---	---	---
5D	Pilot Tubing, 1/4" OD x 30"	8236122	1	1	1	1	1	---	---	---	---	---
	Pilot Tubing, 1/4" OD x 40"	8236123	---	---	---	---	---	1	1	---	---	---
5E	Gas Valve, Honeywell VR8200C3013	81660144	1	1	1	1	---	---	---	---	---	---
	Gas Valve, Honeywell VR8300C4035	81660163	---	---	---	---	1	1	1	---	---	---
5F	Thermocouple, Honeywell Q309A	8236024	1	1	1	1	1	1	1	---	---	---

Note: Gas Valve specifications shown for normal altitude (0-2000 feet). For High Altitude consult factory.

** 40mm Burners Only

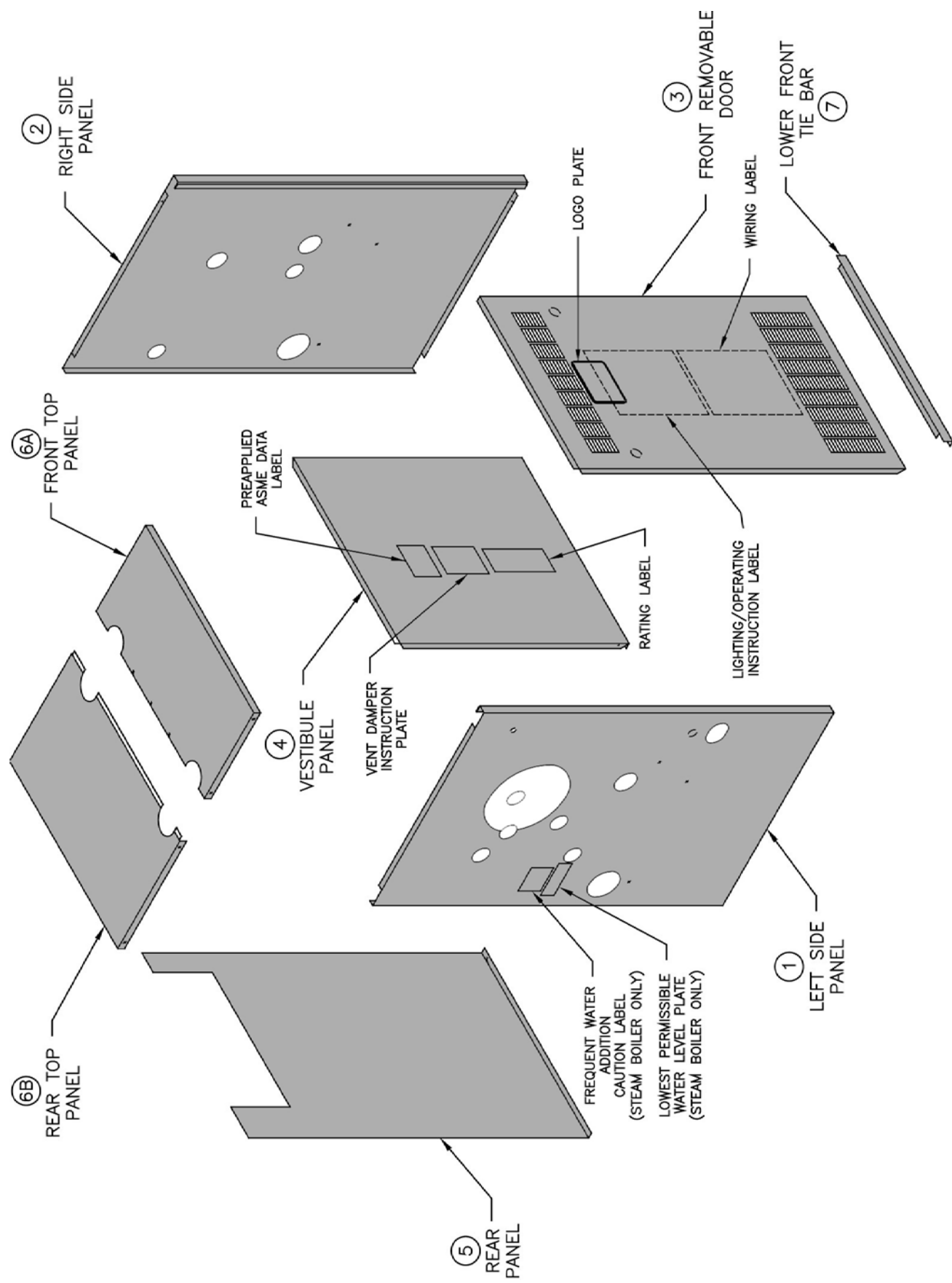
XI. Repair Parts (continued)



Key No.	Description	Part No.	Quantity									
			IN3	IN4	IN5	IN6	IN7	IN8	IN9	IN10	IN11	IN12
5. Pilot Burner and Gas Valve, Intermittent Ignition (EI), Natural Gas												
5A	Pilot Burner, Honeywell Q348A1002	8236072	1	1	1	1	1	1	1	1	1	1
5B	Pilot Orifice, Honeywell 388146NE	Included with 5A	1	1	1	1	1	1	1	1	1	1
5C	Compression Nut/Fitting, 1/4" OD x 1/4 C.C. (Included with 5A and 5E)	8236109	2	2	2	2	2	2	2	2	2	2
5D	Pilot Tubing, 1/4" OD x 30"	8236122	1	1	1	1	1	---	---	---	---	---
	Pilot Tubing, 1/4" OD x 40"	8236123	---	---	---	---	---	1	1	1	1	1
5E	Gas Valve, Honeywell VR8204C3007	81660145	1	1	1	1	---	---	---	---	---	---
	Gas Valve, Honeywell VR8304P4306	81660161	---	---	---	---	1	1	1	1	1	2
5F	Igniter/Sensor Cable, 36", Honeywell 394800-36	8236084	1	1	1	1	1	1	1	1	1	1
5G	Ground Wire Assembly	6136054	1	1	1	1	1	1	1	1	1	1
5. Pilot Burner and Gas Valve, Intermittent Ignition (EI), LP/Propane												
5A	Pilot Burner, Honeywell Q348A1010	8236081	1	1	1	1	1	1	1	---	---	---
5B	Pilot Orifice, Honeywell 388146KP	Included with 5A	1	1	1	1	1	1	1	---	---	---
5C	Compression Nut/Fitting, 1/4" OD x 1/4 C.C. (Included with 5A and 5E)	8236109	2	2	2	2	2	2	2	---	---	---
5D	Pilot Tubing, 1/4" OD x 30"	8236122	1	1	1	1	1	---	---	---	---	---
	Pilot Tubing, 1/4" OD x 40"	8236123	---	---	---	---	---	1	1	---	---	---
5E	Gas Valve, Honeywell VR8204C3015	81660146	1	1	1	1	---	---	---	---	---	---
	Gas Valve, Honeywell VR8304P4314	81660160	---	---	---	---	1	1	1	---	---	---
5F	Igniter/Sensor Cable, 36" Honeywell 394800-36	8236084	1	1	1	1	1	1	1	---	---	---
5G	Ground Wire Assembly	6136054	1	1	1	1	1	1	1	---	---	---

Note: Gas Valve specifications shown for normal altitude (0-2000 feet). For High Altitude consult factory.

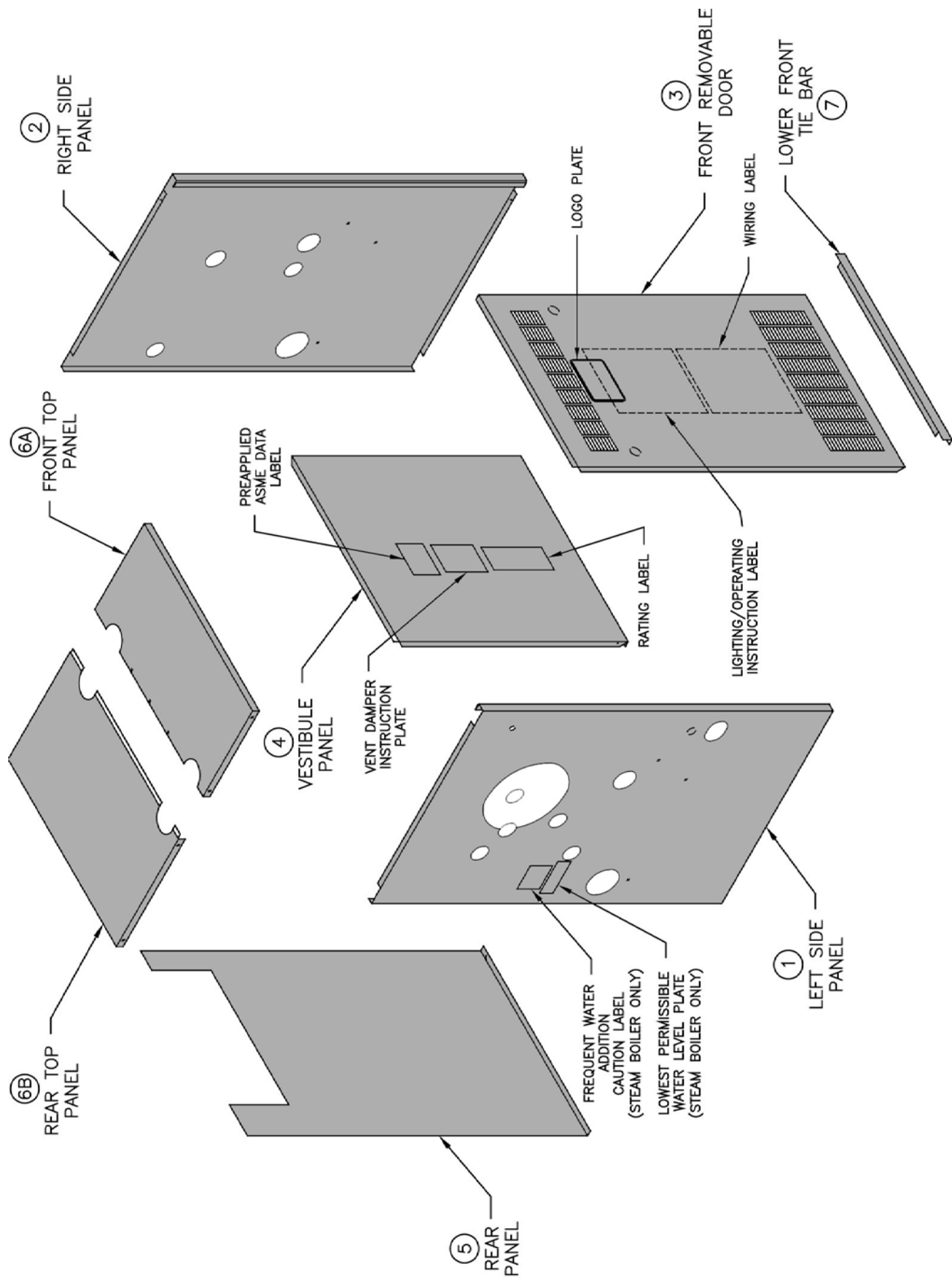
XI. Repair Parts (continued)



XI. Repair Parts (continued)

Key No.	Description	Part No.	Quantity									
			IN3	IN4	IN5	IN6	IN7	IN8	IN9	IN10	IN11	IN12
Jacket Assembly												
1	Left Side Panel	60410013	1	1	1	1	1	1	1	---	---	---
		60410023	---	---	---	---	---	---	---	1	1	1
2	Right Side Panel	60410012	1	1	1	1	1	1	1	---	---	---
		60410022	---	---	---	---	---	---	---	1	1	1
3	Front Removable Panel	60410033	1	---	---	---	---	---	---	---	---	---
		60410043	---	1	---	---	---	---	---	---	---	---
		60410053	---	---	1	---	---	---	---	---	---	---
		60410063	---	---	---	1	---	---	---	---	---	---
		60410073	---	---	---	---	1	---	---	---	---	---
		60410083	---	---	---	---	---	1	---	---	---	---
		60410093	---	---	---	---	---	---	1	---	---	---
		60410103	---	---	---	---	---	---	---	1	---	---
		60410113	---	---	---	---	---	---	---	---	1	---
		60410123	---	---	---	---	---	---	---	---	---	1
4	Vestibule Panel	60410034	1	---	---	---	---	---	---	---	---	---
		60410044	---	1	---	---	---	---	---	---	---	---
		60410054	---	---	1	---	---	---	---	---	---	---
		60410064	---	---	---	1	---	---	---	---	---	---
		60410074	---	---	---	---	1	---	---	---	---	---
		60410084	---	---	---	---	---	1	---	---	---	---
		60410094	---	---	---	---	---	---	1	---	---	---
		60410104	---	---	---	---	---	---	---	1	---	---
		60410114	---	---	---	---	---	---	---	---	1	---
		60410124	---	---	---	---	---	---	---	---	---	1
5	Rear Panel IN10, IN11 & IN12 require 5A and 5B (see page 83)	60410035	1	---	---	---	---	---	---	---	---	---
		60410045	---	1	---	---	---	---	---	---	---	---
		60410055	---	---	1	---	---	---	---	---	---	---
		60410065	---	---	---	1	---	---	---	---	---	---
		60410075	---	---	---	---	1	---	---	---	---	---
		60410085	---	---	---	---	---	1	---	---	---	---
		60410095	---	---	---	---	---	---	1	---	---	---
		60410105	---	---	---	---	---	---	---	1	---	---
		60410115	---	---	---	---	---	---	---	---	1	---
		60410125	---	---	---	---	---	---	---	---	---	1

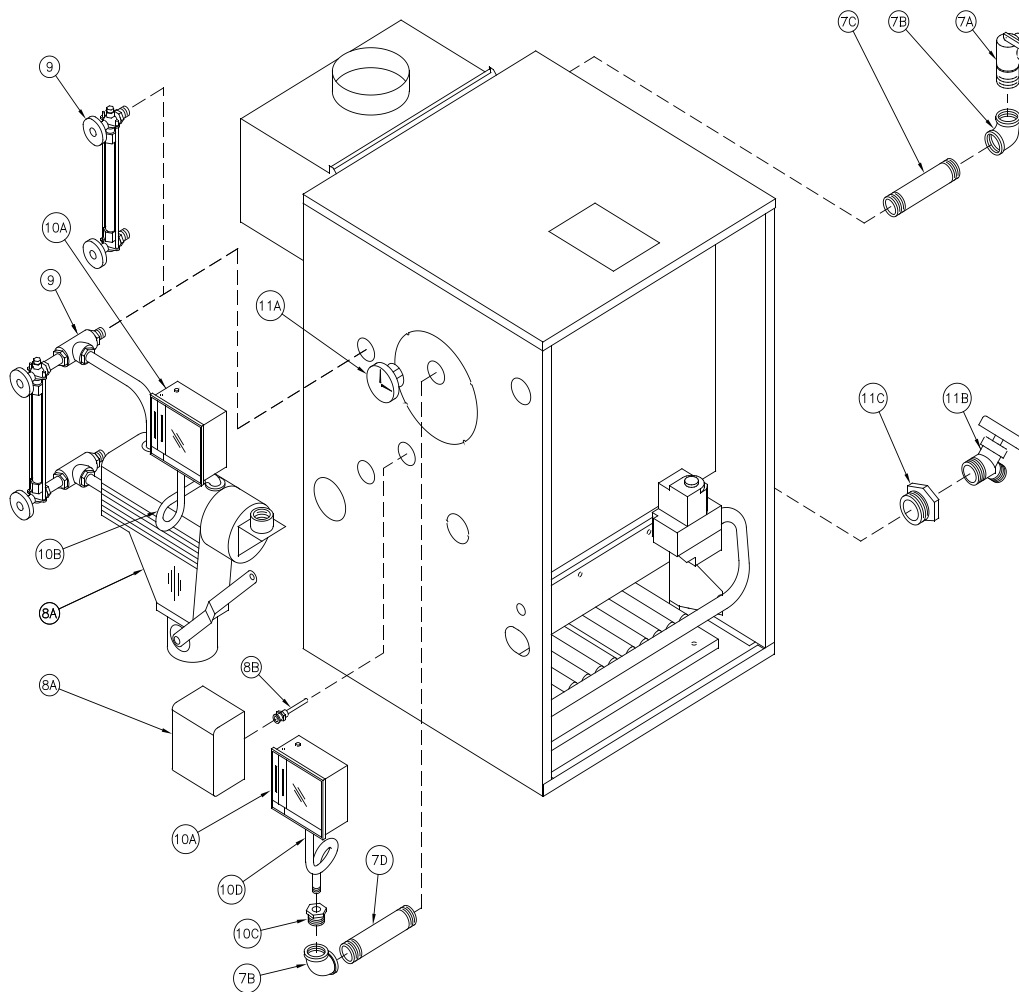
XI. Repair Parts (continued)



XI. Repair Parts (continued)

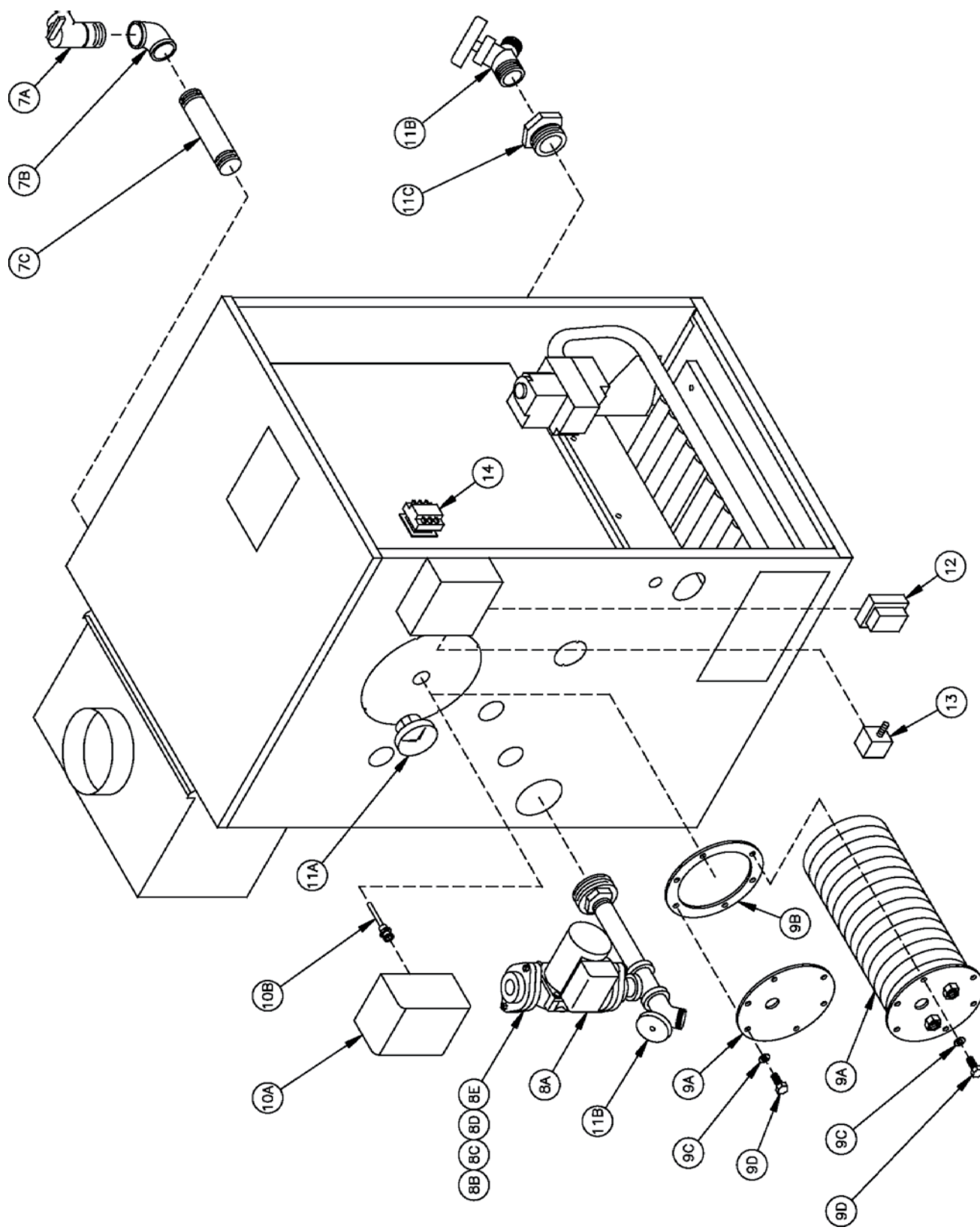
Key No.	Description	Part No.	Quantity									
			IN3	IN4	IN5	IN6	IN7	IN8	IN9	IN10	IN11	IN12
Jacket Assembly (Continued)												
5A	Upper Left Rear Panel (not shown)	604101051	---	---	---	---	---	---	---	1	1	1
5B	Upper Right Rear Panel (not shown)	604101052	---	---	---	---	---	---	---	1	1	1
6A	Front Top Panel	60410036	1	---	---	---	---	---	---	---	---	---
		60410046	---	1	---	---	---	---	---	---	---	---
		60410056	---	---	1	---	---	---	---	---	---	---
		60410066	---	---	---	1	---	---	---	---	---	---
		60410076	---	---	---	---	1	---	---	---	---	---
		60410086	---	---	---	---	---	1	---	---	---	---
		60410096	---	---	---	---	---	---	1	---	---	---
		60410106	---	---	---	---	---	---	---	1	---	---
		60410116	---	---	---	---	---	---	---	---	1	---
		60410126	---	---	---	---	---	---	---	---	---	1
6B	Rear Top Panel	604100361	1	---	---	---	---	---	---	---	---	---
		604100461	---	1	---	---	---	---	---	---	---	---
		604100561	---	---	1	---	---	---	---	---	---	---
		604100661	---	---	---	1	---	---	---	---	---	---
		604100761	---	---	---	---	1	---	---	---	---	---
		604100861	---	---	---	---	---	1	---	---	---	---
		604100961	---	---	---	---	---	---	1	---	---	---
		604101061	---	---	---	---	---	---	---	1	---	---
		604101161	---	---	---	---	---	---	---	---	1	---
		604101261	---	---	---	---	---	---	---	---	---	1
7	Lower Front Tie Bar	70410034	1	---	---	---	---	---	---	---	---	---
		70410044	---	1	---	---	---	---	---	---	---	---
		70410054	---	---	1	---	---	---	---	---	---	---
		70410064	---	---	---	1	---	---	---	---	---	---
		70410074	---	---	---	---	1	---	---	---	---	---
		70410084	---	---	---	---	---	1	---	---	---	---
		70410094	---	---	---	---	---	---	1	---	---	---
		70410104	---	---	---	---	---	---	---	1	---	---
		70410114	---	---	---	---	---	---	---	---	1	---
		70410124	---	---	---	---	---	---	---	---	---	1

XI. Repair Parts (continued)



Key No.	Description	Part No.	Quantity
Steam Trim			
7A	Safety Valve, 3/4 NPT, 15 psi, Conbraco 13-511-08	81660530	1
7B	Elbow, 3/4 NPT	806601502	2
7C	Nipple, 3/4 NPT x 3-1/2"	806600038	1
7D	Nipple, 3/4 NPT x 4"	806600014	1
8A	Low Water Cutoff, McDonnell & Miller PS-802-24 (Probe Included)	80160720	1
	Low Water Cutoff, Hydroleve CG400-2090 (Less Probe - See Key No. 8B)	80160725	
	Low Water Cutoff, McDonnell & Miller 67-BC-1 (Float Type)	80160517	
8B	Probe for CG400	80160629	1
9	Gauge Glass, Extended Shank (with Probe LWCO Only)	8056128	1
	Gauge Glass, Standard Shank (with Float LWCO Only)	8056020	
10A	Limit, Honeywell L404F1367	80160369	1
10B	Syphon, 1/4 NPT x 90°	806603010	1
10C	Bushing, 3/4 NPT x 1/4 NPT	806600508	1
10D	Syphon, 1/4 NPT x 180°	806603030	1
11A	Pressure Gauge	100325-01	1
11B	Drain Valve, Conbraco 31-612-02	806603012	1
11C	Bushing, 2 NPT x 3/4 NPT	806600515	1

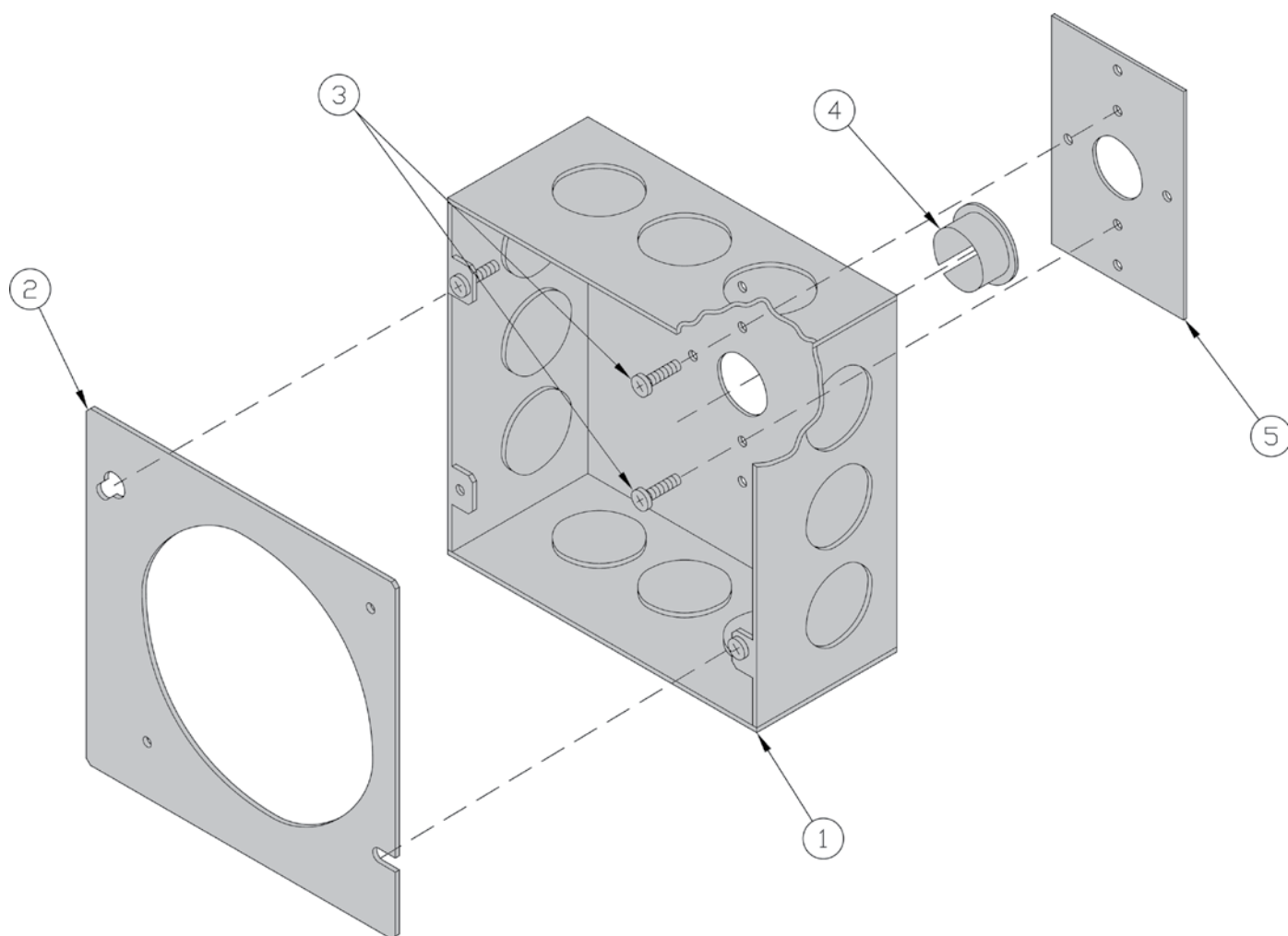
THIS PAGE LEFT BLANK INTENTIONALLY



XI. Repair Parts (continued)

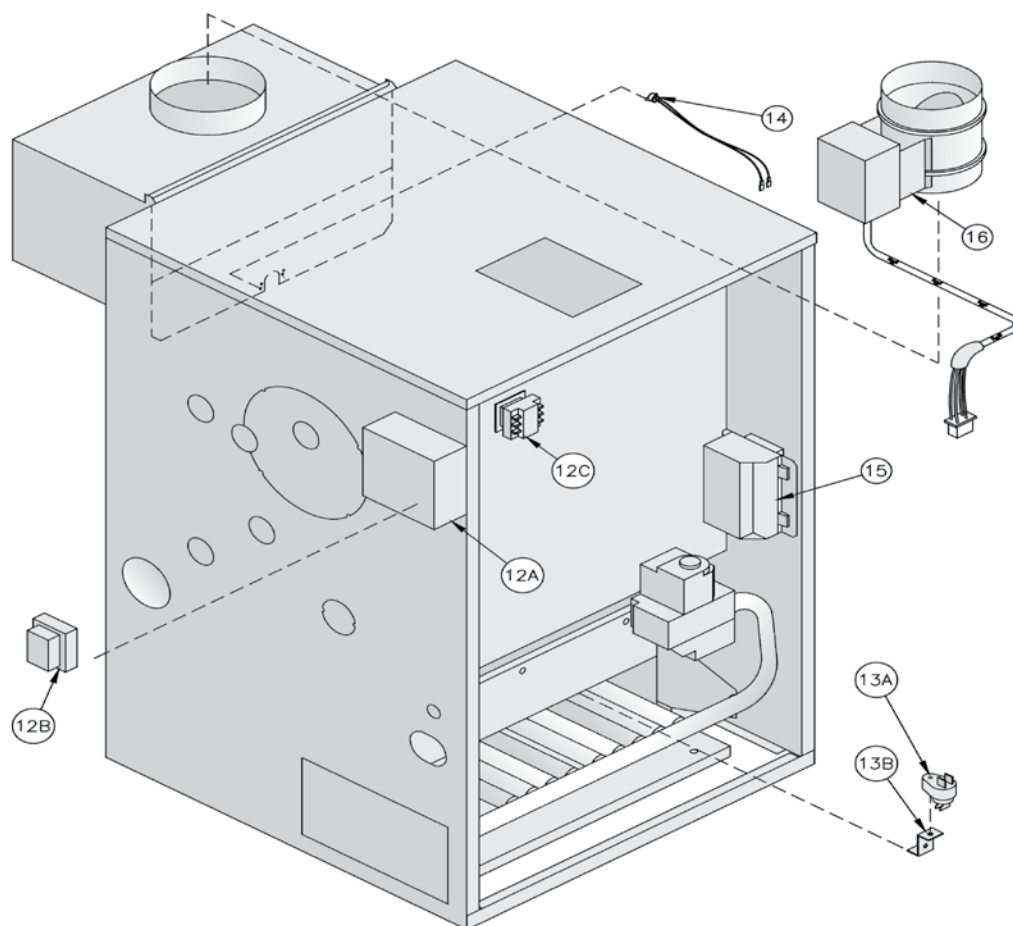
Key No.	Description	Part No.	IN3	IN4	IN5	IN6	IN7	IN8	IN9	IN10	IN11	IN12
Water Trim												
7A	Safety Relief Valve, 3/4 NPT, 30 psi, Conbraco 10-407-05	81660363	1	1	1	1	1	1	1	1	1	1
7B	Elbow, 3/4 NPT	806601520	1	1	1	1	1	1	1	1	1	1
7C	Nipple, 3/4 NPT x 3"	806600002	2	2	2	2	2	2	2	2	2	2
8A	Circulator, Bell & Gossett NRF-22 with Gaskets	8056174	1	1	1	1	1	1	1	1	1	1
	Circulator, Grundfos UP 15-42F	8056044										
	Circulator, Taco 007	8056007										
8B	Gasket, Bell & Gossett NRF-22	806602029	2	2	2	2	2	2	2	2	2	2
	Gasket, Grundfos 510179	806602016										
	Gasket, Taco '00' Series	806602006										
8C	Flange, 1-1/2 NPT	806602014	2	2	2	2	2	2	2	2	2	2
8D	Screw, Cap Hex Head, 7/16 -14 x 1-1/2"	80861301	4	4	4	4	4	4	4	4	4	4
8E	Nut, Hex, 7/16 -14	80860406	4	4	4	4	4	4	4	4	4	4
9A	Tankless Heater, #222	6036007	---	---	1	1	1	1	1	1	1	1
	Heater Cover Plate	7036001	1	1	1	1	1	1	1	1	1	1
9B	Gasket	8036068	1	1	1	1	1	1	1	1	1	1
9C	Washer, 3/8"	80860600	6	6	6	6	6	6	6	6	6	6
9D	Screw, Cap Hex Head, 3/8 -16 x 7/8"	80861337	6	6	6	6	6	6	6	6	6	6
10A	Limit, Honeywell L8148E1299 (Intermittent Circulation Only)	80160607	1	1	1	1	1	1	1	1	1	1
	Limit, Honeywell L6081A1010 (Tankless Heater Only)	80160469										
	Limit, Honeywell L4006A2015 (Gravity Circulation Only)	80160400U										
10B	Well, Honeywell 123871A (Tankless Heater Only)	80160452	1	1	1	1	1	1	1	1	1	1
	Well, Honeywell 123870A (Intermittent or Gravity Circulation Only)	80160426										
11A	Temperature/Pressure Gauge, ENFM 41042.5210	100282-01	1	1	1	1	1	1	1	1	1	1
11B	Drain Valve, Conbraco 31-612-02	806603012	1	1	1	1	1	1	1	1	1	1
11C	Bushing, 2 NPT x 3/4 NPT	806600515	1	1	1	1	1	1	1	1	1	1
12	Transformer, 50VA, Honeywell AT150D1019 (Tankless Heater or Gravity Circulation Only)	80160186	1	1	1	1	1	1	1	1	1	1
13	Relay, DPST, Honeywell R8225D1029 (Tankless Heater Only)	80160265	1	1	1	1	1	1	1	1	1	1
14	Relay, SPST, Honeywell R8222K1000 (Gravity Circulation Only)	80160127	1	1	1	1	1	1	1	1	1	1

XI. Repair Parts (continued)



Key No.	Description	Part No.	Quantity									
			IN3	IN4	IN5	IN6	IN7	IN8	IN9	IN10	IN11	IN12
Transformer/J-Box Adapter Plate												
1	Junction Box, 4-11/16" x 4-11/16" x 2-1/8"	81361761	1	1	1	1	1	1	1	1	1	1
2	Transformer/J-Box Adapter Plate	7011001	1	1	1	1	1	1	1	1	1	1
3	Sheet Metal Screw, #8 x 1/2, Type B, Phillips Head, Blunt	80860019	2	2	2	2	2	2	2	2	2	2
4	O/CL Bushing, Heyco OCB-875	8136066	1	1	1	1	1	1	1	1	1	1
5	J-Box Attachment Bracket	7131001	1	1	1	1	1	1	1	1	1	1

XI. Repair Parts (continued)



Key No.	Description	Part No.	Quantity									
			IN3	IN4	IN5	IN6	IN7	IN8	IN9	IN10	IN11	IN12
12. Transformer (Steam and Gravity Water Only)												
12A	Junction Box, 4-11/16" x 4-11/16" x 2-1/8"	Refer to Table on Page 88										
12B	Transformer, 50 VA, Honeywell AT150D1019	80160186	1	1	1	1	1	1	1	1	1	1
12C	Relay, SPST, Honeywell R8222K1000	80160127	1	1	1	1	1	1	1	1	1	1
13. Flame Rollout Switch												
13A	Flame Rollout Switch	80160044	1	1	1	1	1	1	1	1	1	1
13B	Flame Rollout Switch Bracket	7186018	1	1	1	1	1	1	1	1	1	1
14. Blocked Vent Switch												
14	Blocked Vent Switch	6016067	1	1	1	1	1	1	1	---	---	---
		6111001	---	---	---	---	---	---	---	1	1	1
15. Ignition Module (Intermittent Ignition Only)												
15	Ignition Module, Honeywell S8610M3009	100958-01	1	1	1	1	1	1	1	1	1	1
---	Ignition Module Support Bracket	7016001	1	1	1	1	1	1	1	1	1	1
16. Vent Damper												
16	4"	8116321	1	---	---	---	---	---	---	---	---	---
	5"	8116322	---	1	---	---	---	---	---	---	---	---
	6"	8116323	---	---	1	1	---	---	---	---	---	---
	7"	8116324	---	---	---	---	1	1	---	---	---	---
	8"	8116325	---	---	---	---	---	--	1	1	---	---
	9"	8116326	---	---	---	---	---	---	---	---	1	1