



Submittal Data Information

101-160

Potable Water Zone Sentry® Ball Valve Zone Valve

Effective: July 1, 2013

Supersedes: NEW

Job: _____ Engineer: _____ Contractor: _____ Rep: _____

ITEM NO.	MODEL NO.	

Product Specifications

Max. Operating Pressure
300 PSI (2100 kPa)

Max. Shutoff Pressure
125 PSI (875 kPa)

Fluid Temperature Range
33-240°F (6°-115°C)

Service.....Potable Water

Ball Rotation Speed.....(90° turn),
Approximately
5 seconds
(After charge time)

Electrical Rating.....24 VAC, 60Hz
0.48 Amps

Power Consumption...11.4 W, 0.48 Amps
(Charging)

Power Consumption...1.44W, 0.06 Amps
(Power On)

End Switch Rating1 Amp @ 24 VAC

Materials of Construction, Actuator:

Body....High Performance
Engineered Polymer

Gears...High Performance Internally
Lubricated Engineered Polymer

Materials of Construction, Valve:

Body.....Forged Brass

Stem.....Brass

Press Ring.....Brass

Ball.....Brass (Chrome Plated)

Seat.....Modified Teflon®

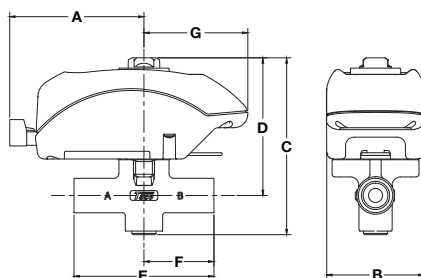
O-Rings.....Viton

Application:

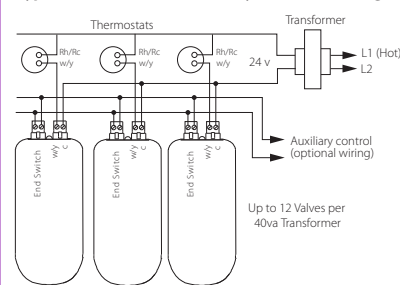
The Taco Potable Water Zone Sentry valve is available in a 2-way sweat configuration with either a normally open or normally closed actuator. Some typical installations would include a combination domestic water and hydronic heating system, culinary installation or water shut off to a potable system.

Ease of Installation / Operation:

The Taco Potable Water Zone Sentry is the most technologically advanced zone valve ever made. It's also simple to install and operate. The valve can be installed in any direction, in any orientation. We then went a step further, allowing the operator to be mounted to the 2-way valve body in either direction. Snap-in quick connects on the back of the valve make for a simple, secure and fast wiring hook-up. A green LED light shows full functionality of the valve's operation. Under a no power situation the manual override button located on the top of the valve allows the ball to be rotated up to 90° and is also marked with a slot to indicate the position of the valve.



Typical Potable Water Zone Sentry Zone Valve Wiring:



Valve Size	Cv (Kv) / Ft. of Pipe Equiv.**	Close-Off Pressure (kPa)
1/2"	4.9 (4.3) / 9.5	0-125 psi (0-862 kPa)
3/4"	10.3 (8.9) / 8.4	0-125 psi (0-862 kPa)

**At 4' per second (Max. recommended residential flow rate).

Potable Water Zone Sentry® Dimensions: (FOR REFERENCE PURPOSES)

Part Number	Valve Size	Valve Type	A		B		C		D		E		F		G	
			in.	mm	in.	mm	in.	mm	in.	mm	in.	mm	in.	mm	in.	mm
V050C2D2ZA024Q4A1 (Normally Closed)	1/2"	2-way Sweat	3"	76.2	2.375"	60.3	4.125"	104.7	3.06"	77.72	3.125"	79.3	1.562"	39.7	2.312"	58.7
V075C2D2ZA024Q4A1 (Normally Closed)	3/4"	2-way Sweat	3"	76.2	2.375"	60.3	4.125"	104.7	3.12"	79.25	3.125"	79.3	1.562"	39.7	2.312"	58.7
V050C2D2ZB024Q4A1 (Normally Open)	1/2"	2-way Sweat	3"	76.2	2.375"	60.3	4.125"	104.7	3.06"	77.72	3.125"	79.3	1.562"	39.7	2.312"	58.7
V075C2D2ZB024Q4A1 (Normally Open)	3/4"	2-way Sweat	3"	76.2	2.375"	60.3	4.125"	104.7	3.12"	79.25	3.125"	79.3	1.562"	39.7	2.312"	58.7



TACO INC., 1160 Cranston Street, Cranston, RI 02920 Telephone: (401) 942-8000 Fax: 942-2360
TACO (Canada), Ltd., 6180 Ordan Drive, Mississauga, Ontario L5T 2B3 Telephone: (905) 564-9422 Fax: (905) 564-9436
Visit our website at: www.taco-hvac.com

Printed in USA
Copyright 2013
TACO, Inc.