

# 86% Efficient!

# Burnham® MegaSteam™

## Oil Fired, Chimney Vented, Cast Iron Steam Boiler

### The Only 86% AFUE 3-pass Steam Boiler!

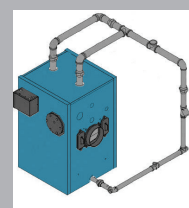


- Unique 3-pass cast iron sectional design
- Four sizes available, 0.75-1.65 GPH, 288-629 sq. ft. of steam
- Very stable waterline, high corrosion resistance
- Superior steam quality – 99% dry!
- Easy installation and servicing; Reversible swing away burner door, no target wall/blanket, removable rear plates provide direct access to flue passages
- **Unmatched steam boiler warranty** – 10 year limited warranty on heat exchanger, 5 year limited warranty against waterside corrosion
- Tankless heater available

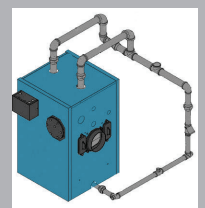


### Available With **EXCLUSIVE** Near Boiler Piping Kit

- Perfect piping EVERY TIME!
- Pre-cut, pre-threaded nipples
- All fittings and nipples included
- Left or right supply, standard or dropped header (10”), all from same kit
- Makes drier steam with a more stable waterline
- Saves installation time, no need to carry and/or use a pipe threading machine
- Includes Hartford loops with “Y” fittings for condensate return
- Works exclusively with Burnham MegaSteam boilers



Standard Header



Dropped Header

**Burnham®**  
by  
**U.S. Boiler Company**



# MegaSteam: Technical Information



## Standard Equipment

- 3-pass cast iron section assembly, 50-psi MAWP (maximum allowable working pressure)
- Deluxe, powder coated, removable jacket
- 3" jacket insulation
- Cast iron reversible swing door
- Vacuum formed burner door insulation
- Boiler drain valve
- Barometric draft regulator
- Safety valve
- Beckett AFG flange mounted oil burner w/easy connect power cord (Riello optional)
- Steam gauge
- L4006A (ST & SL models only)
- Gauge glass set
- Removable stainless steel flueway baffles
- Removable cast iron canopy covers
- Junction box w/ plug-in accessor connections
- Mounted spanner bar w/ adjustable legs
- Pressure limit
- LWCO - Hydrolevel CG450
- 222A Tankless heater (ST model only)

## MegaSteam Ratings & Specifications

Model	AFUE%	Burner Cap. (GPH) <sup>1</sup>	DOE Heating Cap. (MBH) <sup>2</sup>	Net AHRI (MBH)	Net AHRI (sq. ft.) <sup>3</sup>	Flue Collar Diameter (In.) <sup>4</sup>	Approx. Shipping Weight. (lbs.)
MST288	86	0.75	92	69	288	6	607
MST396	86	1.05	127	95	396	6	607
MST513	86	1.35	164	123	513	6	744
MST629	86	1.65	201	151	629	7	881

**Notes:** Maximum Working Pressure: 15 PSI Steam

1. Burner Capacity is based on oil having Higher Heating Value of 140,000 BTU/Gal.
2. DOE Heating Capacity and Annual Fuel Utilization Efficiency (AFUE) are based on US Government tests at 13.0% CO<sub>2</sub> with No. 1 maximum smoke and 0.00" draft in the breach on standard equipment package.
3. Net AHRI Ratings are based upon pick-up allowance of 1.333. Consult manufacturer with unusual piping and pickup requirements before selecting boiler.
4. Used for sizing flue connection materials.

Model	Dimensions (Inches)			Minimum Chimney Requirements			OPTIONAL 222A Tankless Heater	
	'A'	'B'	'C'	Round In. (Diam.)	Rectangle (In. x In.)	Height (Feet)	Rating (GPM)	Pressure Drop (PSI)
MST288	16-5/8	24	5	6	8 x 8	15	3.00	22.0
MST396	16-5/8	24	5	6	8 x 8	15	3.25	24.3
MST513	22-5/8	24	6	6	8 x 8	15	3.50	26.5
MST629	28-5/8	30	6	7	8 x 8	15	4.00	31.0

**Notes:** Tankless Heater Rating, GPM is based on 100° F temperature rise with 40° F inlet water (intermittent draw) with boiler water temperature of 190° F.

