

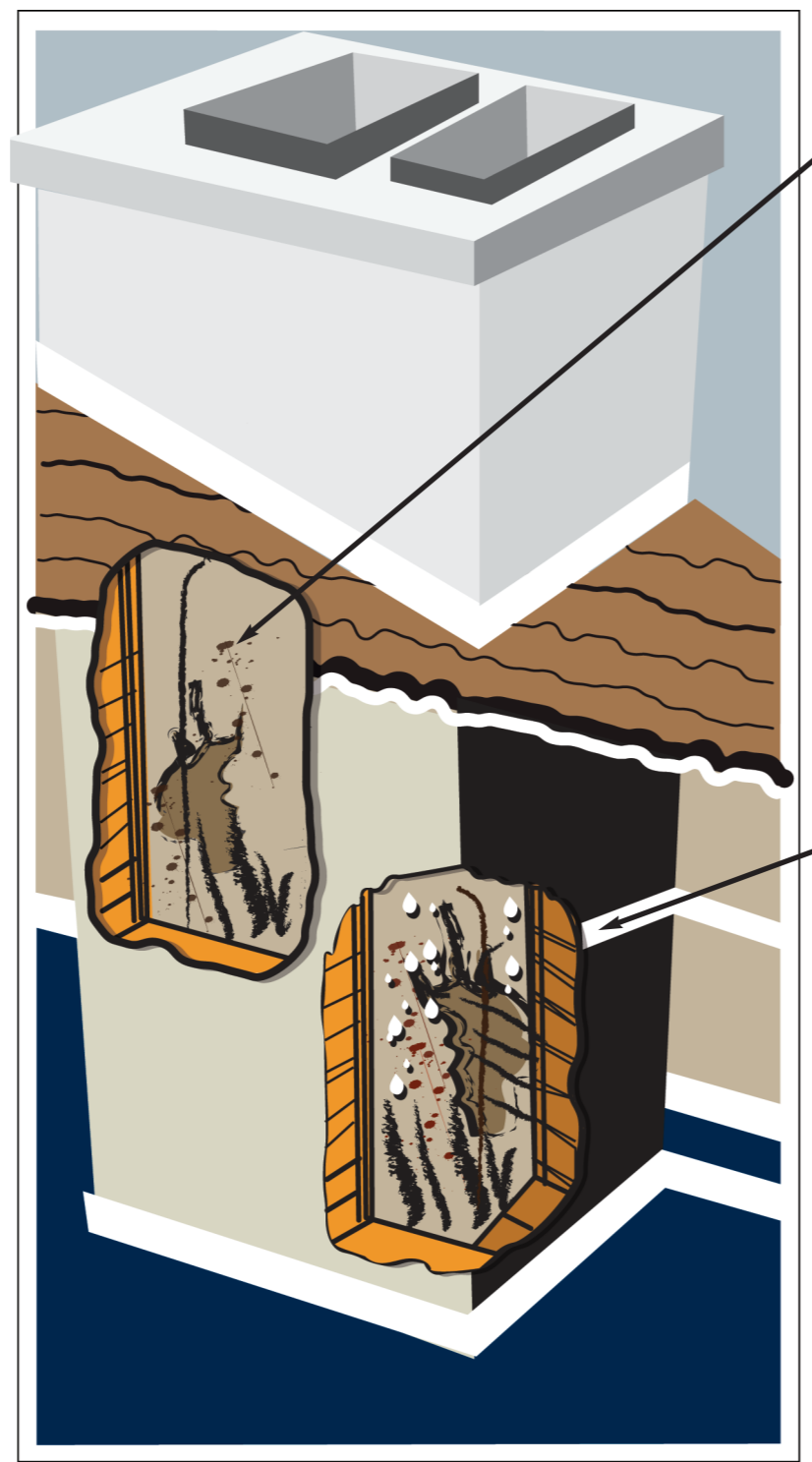


## At first glance your chimney looks fine

Chimneys often appear to be in good condition when looking at them from the outside. Inside it could tell a completely different story. Older chimneys were not designed to vent today's energy-efficient appliances. It is important to evaluate your chimney and your chimney professional will do just that.

## When we take a closer look the problems are revealed

Cracks may not be visible, and the original clay liner may be. Some chimneys may not even contain a clay liner. Deterioration may be marked with loose bricks and mortar.



In the top example image, creosote buildup, a cracked and missing liner, and eroded brick and mortar are illustrated. A flue fire, an improperly vented appliance, a misused woodstove, poor construction, or excessive moisture may create conditions that are less than desirable. The hazards to your home may include fire, or even worse, carbon monoxide poisoning to your unaware family. This potential source of danger is nothing to take lightly.

- Cracked or missing liner**
- Eroded brick and mortar**
- Excessive or glazed creosote**

In the lower example, moisture is leaching into the home. Missing or damaged tiles will also create a hazardous situation and again allow carbon monoxide to seep into your home.

- Flaking plaster, peeling wallpaper**
- Eroded or missing clay liner**
- Excessive moisture in gas flues**
- Excessive soot in oil flues**

## Chimney deterioration may cause loss of lives and illness to many unsuspecting families

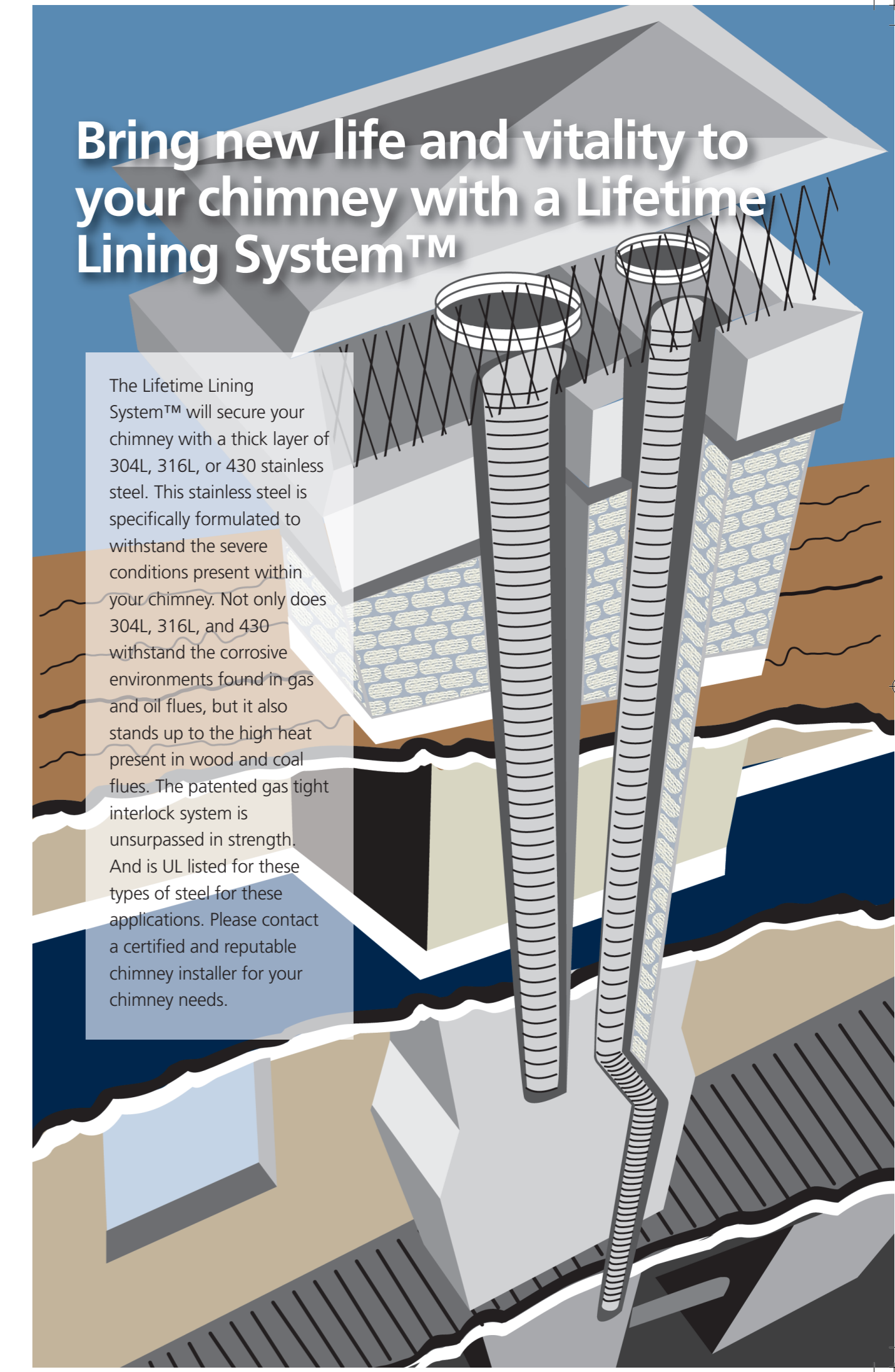
Defects in a chimney may result in family injury or even worse, death from fire or carbon monoxide poisoning. Carbon monoxide, or CO, an odorless gas, is deadly and is often associated with malfunctioning or obstructed exhaust systems.

Unfortunately a house fire is easy to start. A spark through an opening, or a fireplace can instigate a chimney fire. Excessive heat is then conducted through the chimney walls. When there is a missing or damaged tiles, this excessive heat can engulf the chimney walls and spread throughout the home quickly. Tile deterioration in a flue allows deadly flue gases to travel into your home. A partial or complete collapse of the flue liner will send deadly fumes bellowing throughout your home. The good news is correcting these issues can be done effectively without completely rebuilding the chimney.



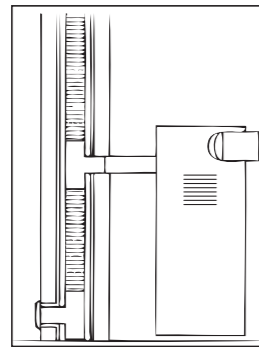
## Bring new life and vitality to your chimney with a Lifetime Lining System™

The Lifetime Lining System™ will secure your chimney with a thick layer of 304L, 316L, or 430 stainless steel. This stainless steel is specifically formulated to withstand the severe conditions present within your chimney. Not only does 304L, 316L, and 430 withstand the corrosive environments found in gas and oil flues, but it also stands up to the high heat present in wood and coal flues. The patented gas tight interlock system is unsurpassed in strength. And is UL listed for these types of steel for these applications. Please contact a certified and reputable chimney installer for your chimney needs.

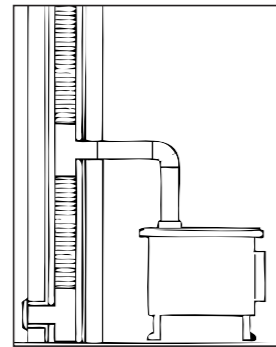


## Lifetime Lining System™ is flexible and meet many chimney configurations.

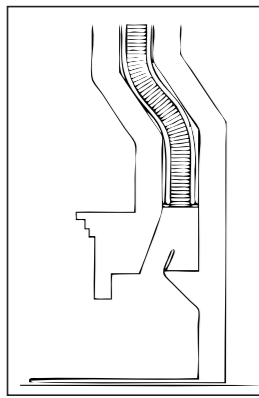
Every Lifetime Lining System™ is tested and listed by Underwriters Laboratories, and it has a lifetime warranty that transfers to the next owner.



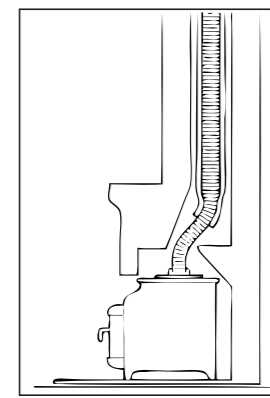
Furnaces, boilers, and water heaters



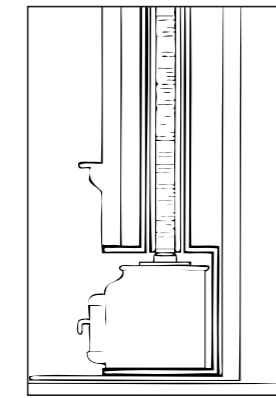
Woodstoves and wood pellet stoves



**Fireplaces**  
Lifetime Lining System is flexible so it can go through flue bends. Wood and coal installations require insulation.



**Fireplaces Inserts**  
Lifetime Lining System can be ovalized to fit through tight damper spaces. Wood and coal installations require insulation.



**Fireplace inserts in factory-built fireplaces**  
Wood and coal installations require insulation.

### Lifetime Lining System™ is available in oval shapes enabling them to fit through tight damper spaces.

Rely on Lifetime Lining System™ for safety and longevity, invest in a strong chimney liner . . . Lifetime. Its corrugation is engineered to prevent distortion during installation and to restrain chimney fires.

For installation and warranties please refer to Lifetime Chimney Supply warranty pamphlet.



132 Dupont Street  
Plainview, NY 11803-1603  
877.234.PIPE ■ 516.576.8144  
[www.LifetimeChimneySupply.com](http://www.LifetimeChimneySupply.com)

The solution – replace the lining of the chimney with the Lifetime Lining System™. The effective system helps water vapors vent efficiently and maximum safety will be maintained.

## Water in a gas appliance flue

Years ago, low-efficiency gas-heating appliances wasted heat and sent it up and out of our chimneys and very little went into our homes. Utility bills elevated continuously and unfortunately our natural resources were wasted. High-efficiency gas heating appliances of today replaced those dinosaurs. They are designed to extract more heat during the burning process and as a result less heat escapes through the flue. The newly designed furnaces offer more effective use of heat but regrettably present excessive moisture problems in the flue that has to be dealt with.

Water, a by-product of burning, does not easily evaporate in this scenario. The water is not escaping through the chimney flue. The resulting water vapor created during burning has no power to push it up and out the flue. Instead it remains on the walls of your chimney as it condenses. The Acid-laden water on the flue and continually deteriorates the chimney from the constant moisture bath.

## Sulfur compounds create problems in an oil appliance flue

Sulfur-rich soot is formed on the inner wall of your chimney when oil heat is burned.

Combined with flue moisture, this sulfur soot mixes to form an acid corrosive that attacks your chimney walls, and erodes your flue tiles and mortar joints.

The remaining gaps allow the sulfuric acid mixture to attack the brickwork, and penetrate the sulfur dioxide and carbon monoxide poisoning into your home. Chimney debris or soot falls to the bottom of your chimney and creates additional dangers. The build-up can clog your chimney and again revert dangerous gases into your home.

Installing new, a Lifetime Lining System™ will vent this dangerous sulfuric soot efficiently and with maximum safety.

Masonry chimneys, thought of as a permanent structure, are not practically insusceptible to damage. Without a proper chimney liner that is cared for annually, the damage can be substantial.



## Protect Your Chimney

Lifetime Chimney Supply  
132 Dupont Street Plainview, NY 11803-1603  
877.234.PIPE ■ 516.576.8144  
■ [www.LifetimeChimneySupply.com](http://www.LifetimeChimneySupply.com)

