

For Commercial & Residential Applications

Job Name _____

Contractor _____

Job Location _____

Approval _____

Engineer _____

Contractor's P.O. No. _____

Approval _____

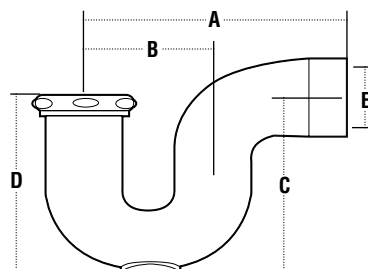
Representative _____

Regulation Traps

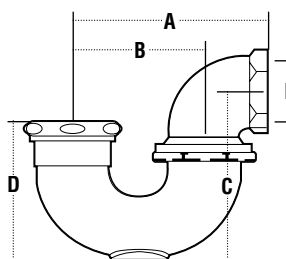
- Cast Brass
- Brass Nuts



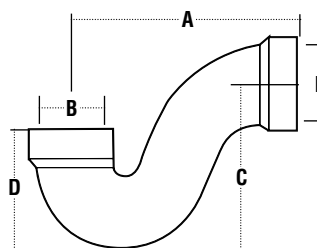
Model 1-5-3



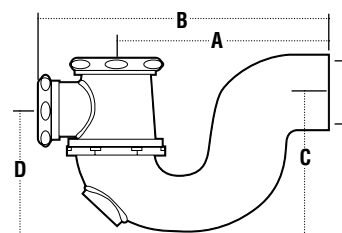
New York



L.A.



Low Seal



Swing Tee

MODEL	✓ TO SUBMIT	DESCRIPTION	CLEANOUT	DIMENSIONS										FINISH
			Y/N	A		B		C		D		E		
				in	mm	in	mm	in	mm	in	mm	in	mm	
New York Regulation Type - Cast Brass Body														
1-2-1 H		1½ x 1¼ IPS	Yes	4 ⁵ / ₈	117.5	2 ⁵ / ₈	66.7	3 ³ / ₄	95.3	4 ¹ / ₈	104.8	THD 1½	THD 38	Rough Brass
1-2-3 H		1½ x 1¼	Yes	4 ⁵ / ₈	117.5	2 ⁵ / ₈	66.7	3 ³ / ₄	95.3	4 ¹ / ₈	104.8	THD 1½	THD 38	Rough Brass
1-5-1 H		2 x 1½	Yes	4 ¹⁹ / ₃₂	116.7	2 ¹⁵ / ₁₆	74.6	4	101.6	4 ³ / ₈	111.1	THD 2	THD 51	Rough Brass
1-5-3		2 x 1½	No	4 ¹⁹ / ₃₂	116.7	2 ¹⁵ / ₁₆	74.6	4	101.6	4 ³ / ₈	111.1	THD 2	THD 51	Chrome Plated
L.A. Regulation Type - Cast Brass Body														
1-10-1 H		1½ x 1½ IPS	No	3 ¹⁵ / ₁₆	100.0	2 ⁵ / ₈	66.7	4 ¹ / ₈	104.8	3 ³ / ₆₄	77.4	THD 1½	THD 38	Rough Brass
1-10-3 H		1½ x 1¼ IPS	No	3 ¹⁵ / ₁₆	100.0	2 ⁵ / ₈	66.7	4 ¹ / ₈	104.8	3 ³ / ₆₄	77.4	THD 1½	THD 38	Chrome Plated
1-11-1		1½ x 1½ IPS	Yes	3 ¹⁵ / ₁₆	100.0	2 ⁵ / ₈	66.7	4 ¹ / ₈	104.8	3 ¹ / ₄	82.5	THD 1½	THD 38	Chrome Plated
1-11-3		1½ x 1¼ IPS	Yes	3 ¹⁵ / ₁₆	100.0	2 ⁵ / ₈	66.7	4 ¹ / ₈	104.8	3 ¹ / ₄	82.5	THD 1½	THD 38	Chrome Plated
1-12-1 H		1½ x 1½ Copper	No	3 ¹⁵ / ₁₆	100.0	2 ⁵ / ₈	66.7	4 ¹ / ₈	104.8	3 ³ / ₆₄	77.4	CXC 1½	CXC 38	Rough Brass
1-13-1 H		2 x 1½ IPS	No	6	152.4	3 ¹⁵ / ₁₆	100.0	5 ⁷ / ₈	149.2	4 ⁵ / ₁₆	109.5	THD 2	THD 51	Rough Brass
1-15-1		2 x 1½ Copper	No	5 ²¹ / ₃₂	143.7	3 ⁹ / ₁₆	90.5	5 ⁷ / ₁₆	138.1	4 ¹ / ₄	108.0	CXC 2	CXC 51	Rough Brass
Low Seal Bath Trap														
1-14-1		1½ x 1½ IPS	No	5½	140.0	-	-	3 ¹¹ / ₁₆	93.7	2 ²⁵ / ₃₂	70.6	THD 1½	THD 38	Rough Brass
Swing Tee - Cast Brass Body														
1-21-1 H		2 x 1½	Yes	5 ²⁹ / ₃₂	150.0	7 ⁵ / ₈	193.7	4 ¹⁹ / ₃₂	116.7	4 ¹¹ / ₃₂	110.3	THD 2	THD 51	Rough Brass



815 Chestnut St., No. Andover, MA 01845
www.wattsbrass-tubular.com

Watts product specifications in U.S. customary units and metric are approximate and are provided for reference only. For precise measurements, please contact Watts Technical Service. Watts reserves the right to change or modify product design, construction, specifications, or materials without prior notice and without incurring any obligation to make such changes and modifications on Watts products previously or subsequently sold.