



WELLXTROL®

Next Generation Well Tanks



Well Above The Rest®



WELLXTROL®

AMTROL Inc. has a long tradition of innovative product design, uncompromisingly high quality and outstanding customer service. Well-X-Trol has been the industry's most trusted brand of well tanks for over 45 years. Today, AMTROL is proud to introduce the Next Generation of well tanks featuring higher performance and the industry's only 7 year warranty. All Well-X-Trol tanks are Made in the USA at our ISO 9001:2008 registered facilities. The Best Just Got Better.



The Best Just Got Better.

NEW The Industry's Longest Warranty: 7 Years

- Installer research identified the desire for a longer warranty.
- A redesign was required that included a number of product enhancements.

NEW High Strength Steel (HSS) Construction

- Deep-drawn dome for double the strength of rolled steel.
- Multi-dome construction for internal bracing.

Projection Welded Air Valve

- Eliminates threaded valve leak paths.
- Tamper-evident warning label for added safety.

Positive Hoop Ring and Groove Seal

- Secures diaphragm and liner for added strength and reliability.
- Exclusive welding process eliminates rough spots and sharp edges that can damage the diaphragm and liner.

Seamless Heavy Duty Butyl Diaphragm

- The Industry's thickest diaphragm for extra strength and flexibility.
- Conforms exactly to the shell without stretching, creasing or forming bubbles that could trap water or sediment.
- Meets stringent FDA requirements for potable water.

Polypropylene Tank Liner

- Provides a 100% corrosion resistant, non-metallic water reservoir.
- NSF® International Standard 61 listed for clean, safe water storage with no taste or odor.

NEW Turbulator™ Water Circulation Device

- Patent pending design agitates water as it enters tank.
- Helps reduce sediment build-up and extends tank life.

Stainless Steel System Connection

- Withstands aggressive water conditions.

NEW Best-in-Class 150 psig Pressure Rating

- 20% higher working pressure performance.
- Each tank is pressure tested for added safety.
- Pre-pressurized to the most common pump cut-in pressure.

NEW Tuf-Kote™ HG Indoor/Outdoor Coating Technology

- Now standard on all models in AMTROL blue, tan or gray.
- Stands up to the most severe environments.

NEW DuraBase™ Composite Tank Stand

- Patent pending design is engineered for strength; allows tank to be rolled into place.
- UV resistant material is rugged and will never corrode.
- Available separately as a spacer for Well-X-Trol® models.



Dome



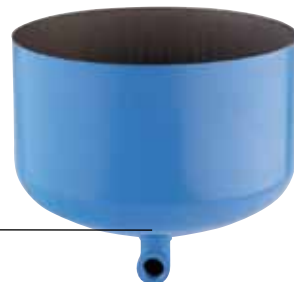
Hoop



Butyl Diaphragm



Polypropylene Liner



Dome



Turbulator™

Stainless Steel Connection with optional Pro Access®



DuraBase™ Composite Stand



Tank Base Options

Steel Stand with Protective Edging

In-Line Models



Model Number	Tank Volume (Gallons)	Max. Accept. Volume (Gallons)	Diameter (Inches)	Height (Inches)	System Connection (NPTM)	System Drawdown (gallons)			Shipping Weight (lbs.)
						30/50	40/60	50/70	
WX-101	2.0	0.9	8	13	¾	0.6	0.6	0.5	5
WX-102	4.4	2.4	11	15	¾	1.4	1.2	1.0	9
WX-103	7.6	3.2	11	22	¾	2.4	2.0	1.8	15
WX-104	10.3	10.3	15	18	1	3.2	2.8	2.4	20
WX-200	14.0	11.3	15	22	1	4.3	3.8	3.3	22

Stainless Steel System Connection.

Maximum Operating Temperature: 200° F. Maximum Working Pressure: 150 psig. Factory Pre-charge: 38 psig.

Gray: Available on all models. Use suffix G.

Stand Models



Model Number	Tank Volume (Gallons)	Max. Accept. Volume (Gallons)	Diameter (Inches)	Height (Inches)	System Connection (NPTF)	System Drawdown (gallons)			Shipping Weight (lbs.)
						30/50	40/60	50/70	
WX-201	14.0	11.3	15	25	1	4.3	3.8	3.3	25
WX-202	20.0	11.4	15	32	1	6.2	5.4	4.7	33
WX-202XL	26.0	11.4	15	39	1	8.0	7.0	6.1	36
WX-203	32.0	11.2	15	47	1	9.9	8.6	7.6	43
WX-205	34.0	34.0	22	30	1¼	10.5	9.1	8.0	61
WX-250	44.0	33.9	22	36	1¼	13.6	11.8	10.4	69
WX-251	62.0	34.1	22	47	1¼	19.2	16.6	14.6	92
WX-255	81.0	33.2	22	57	1¼	25.0	21.7	19.1	103
WX-252	86.0	33.5	22	62	1¼	26.6	23.0	20.3	114
WX-302	86.0	46.4	26	47	1¼	26.6	23.0	20.3	123
WX-350	119.0	46.4	26	62	1¼	36.8	31.9	28.1	166

Stainless Steel System Connection.

Maximum Operating Temperature: 200° F. Factory Pre-charge: 38 psig.

Maximum Working Pressure all models except WX-252: 150 psig; WX-252: 100 psig.

Pro Access®: Available on all models except WX-201 and WX-252. Use suffix PA.

DuraBase™: Available on all models except WX-252. Use suffix D.

Tan and Gray: Available on all models except WX-252. Use suffix T or G.

Pro Access® not available with DuraBase™.

Underground Models



Model Number	Tank Volume (Gallons)	Max. Accept. Volume (Gallons)	Diameter (Inches)	Height (Inches)	System Connection (NPTF)	System Drawdown (gallons)			Shipping Weight (lbs.)
						30/50	40/60	50/70	
WX-200UG	14.0	11.3	15	22	1	4.3	3.8	3.3	22
WX-202UG	20.0	11.4	15	30	1	6.2	5.4	4.7	30
WX-250UG	44.0	33.9	22	33	1¼	13.6	11.8	10.4	60
WX-251UG	62.0	34.1	22	44	1¼	19.2	16.6	14.6	83

Stainless Steel System Connection.

Maximum Operating Temperature: 200° F. Maximum Working Pressure: 150 psig. Factory Pre-charge: 38 psig.

Note: System Drawdown can be affected by various ambient and system conditions, including temperature and pressure.

Model Specifications & Sizing

Wall Hung Model for VFD Systems

Model Number	Tank Volume (Gallons)	Max. Accept. Volume (Gallons)	Dimensions			System Connection (NPTM)	System Drawdown (gallons)			Shipping Weight (lbs.)
			Length (Inches)	Width (Inches)	Height (Inches)		30/50	40/60	50/70	
WX-102VFD	4.4	2.4	15	11	12	¾	1.4	1.2	1.0	13

Stainless Steel System Connection.

Maximum Operating Temperature: 200° F. Maximum Working Pressure: 150 psig. Factory Pre-charge: 38 psig. Includes Universal Mounting Bracket.



Pump Stand Models

Model Number	Tank Volume (Gallons)	Max. Accept. Volume (Gallons)	Dimensions			System Connection (NPTM)	System Drawdown (gallons)			Shipping Weight (lbs.)
			Length (Inches)	Width (Inches)	Height (Inches)		30/50	40/60	50/70	
WX-102PS	4.4	2.4	15	11	12	¾	1.4	1.2	1.0	13
WX-105PS	5.3	4.2	18	11	12	¾	1.6	1.4	1.3	15
WX-110PS	7.4	4.1	23	11	12	¾	2.3	2.0	1.8	18
WX-200PS	14.0	11.3	22	15	16	1	4.3	3.8	3.3	29
WX-202PS	20.0	11.4	30	15	16	1	6.2	5.4	4.7	35

Stainless Steel System Connection.

Maximum Operating Temperature: 200° F. Maximum Working Pressure: 150 psig. Factory Pre-charge: 38 psig.



Horizontal Model

Model Number	Tank Volume (Gallons)	Max. Accept. Volume (Gallons)	Dimensions			System Connection (NPTM)	System Drawdown (gallons)			Shipping Weight (lbs.)
			Length (Inches)	Width (Inches)	Height (Inches)		30/50	40/60	50/70	
WX-202H	20.0	11.4	30	15	16	1	6.2	5.4	4.7	33

Stainless Steel System Connection.

Maximum Operating Temperature: 200° F. Maximum Working Pressure: 150 psig. Factory Pre-charge: 38 psig.



Sizing: Choose the amount of system protection you need.

The Effective System Protection (ESP) sizing procedure covers modern residential water-use habits, heavy demands and the general increase in water use that has occurred in recent years. ESP sizing is designed to reduce system wear and lower energy consumption by keeping pump starts to a minimum.

ESP Sizing Table

Pump Discharge Rate (Approx. GPM)	Pumps Up To ¾ hp & 1 Minute Run Time			Pumps Over ¾ hp & 2 Minute Run Time		
	30/50 PSIG	40/60 PSIG	50/70 PSIG	30/50 PSIG	40/60 PSIG	50/70 PSIG
5	WX-202	WX-202	WX-202	WX-205	WX-205	WX-250
7	WX-202XL	WX-203	WX-203	WX-250	WX-251	WX-251
10	WX-205	WX-205	WX-250	WX-251	WX-255	WX-302
12	WX-250	WX-250	WX-251	WX-255	WX-255	WX-350
15	WX-250	WX-251	WX-251	WX-302	WX-350	WX-350
20	WX-251	WX-255	WX-302	WX-350	WX-255 (2)	WX-302 (2)
25	WX-255	WX-302	WX-350	WX-255 (2)	WX-302 (2)	WX-350 (2)
30	WX-302	WX-350	WX-350	WX-302 (2)	WX-350 (2)	WX-302 (3)
35	WX-350	WX-350	WX-255 (2)	WX-350 (2)	WX-350 (2)	WX-350 (3)
40	WX-350	WX-255 (2)	WX-302 (2)	WX-350 (2)	WX-302 (3)	WX-350 (3)

Larger Tank = Fewer Cycles for Longer Tank and Pump Life

The Well-X1 system combines city-like water pressure utilizing an existing pump. It's the perfect alternative to complicated, expensive and difficult to install VFD systems.

Pre-assembled and ready-to-run, it's the ultimate combination of quality, savings and performance.



The VFD Alternative

- City-like water pressure from existing submersible or jet pumps.
- Maintains 10 psig differential for smooth, consistent flow.
- Pump does not run constantly which saves energy.

Well-X-Trol® Well Tank

- Features include high strength steel, 150 psig, Tuf-Kote™ HG, Turbulator and DuraBase stand.
- Provides supplemental storage for peak demands.
- 7 year warranty.

Guardian CP™ Digital Control

- Digital pressure gauge. Adjustable up to 80 psig.
- Real time system diagnostics.
- 2 year warranty.

Fast, Easy Installation

- Simple 4-wire setup.
- Auto adjusts to 115 or 230 VAC.
- Remains idle if wired improperly.
- Pre-assembled with:
 - Guardian CP Control
 - Compression Fittings
 - Decorative Cap
 - Relief Valve
 - Mounting Bracket
 - Drain Assembly
 - Brass Tank Tee
 - Press Sleeves
 - Copper Tubing



Pump Protection



RAPID CYCLE:

Alerts user before pump damage occurs.



LOW WATER CUTOFF:

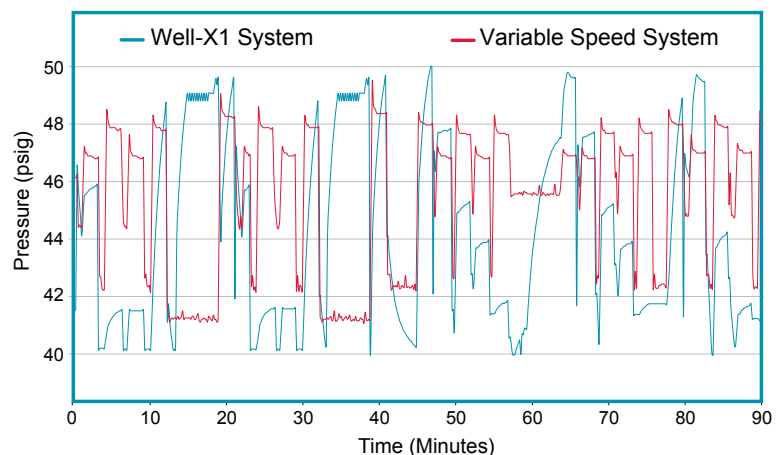
Shuts off pump when below 10 psig; automatically restarts every 60 minutes.



IMPROPER VOLTAGE:

Shuts off pump; automatically restarts with proper voltage.

Comparable Pressure Performance



1. Well-X1 System: Guardian CP set at 40/50 psig with 1/2 HP submersible pump and 44 gal. well tank.
2. Variable Speed System: 3/4 Variable Speed pump set at 47 psig with a 2 gal. in line tank.

The Simple Solution.

Specifications

Model Number	Tank Volume (Gallons)	Diameter (Inches)	Height (Inches)	Shipping Weight (lbs.)	Voltage (VAC)	Maximum Pump Horsepower	Relief Valve (Included)	Pressure Range (psig)	Differential Range (psig)
WX1-250	44	22	44	80	115/230	2	100 psig	10-80	10-55
WX1-251	62	22	55	103	115/230	2	100 psig	10-80	10-55
WX1-302	86	26	55	134	115/230	2	100 psig	10-80	10-55

All models: Water Connections 1" NPTF and 1-1/4" NPTM

System Drawdown (Gallons)

Model Number	Standard Differential				Model Number	10 psig Differential			
	30/50	40/60	50/70	60/80		40/50	50/60	60/70	70/80
WX1-250	13.6	11.8	10.4	9.3	WX1-250	6.8	5.9	5.2	4.7
WX1-251	19.2	16.6	14.6	13.1	WX1-251	9.6	8.3	7.3	6.6
WX1-302	26.6	23.0	20.3	18.2	WX1-302	13.3	11.5	10.2	9.1

WELL-X1® Sizing

Traditional Submersible Pump Installation										Jet Pump Systems				
20 psig Differential					10 psig Differential					10 psig Differential				
PUMP GPM	30/50	40/60	50/70	60/80	PUMP GPM	40/50	50/60	60/70	70/80	PUMP GPM	20/30	30/40	40/50	50/60
10	WX1-250	WX1-250	WX1-250	WX1-250	5	-	-	WX1-250	WX1-250	5	WX1-250	WX1-250	WX1-250	WX1-250
12	WX1-250	WX1-250	WX1-251	WX1-251	7	WX1-250	WX1-250	WX1-251	WX1-251	6	WX1-250	WX1-250	WX1-250	WX1-250
15	WX1-251	WX1-251	WX1-251	WX1-302	10	WX1-251	WX1-251	WX1-302	WX1-302					
18	WX1-251	WX1-302	WX1-302	WX1-302	12	WX1-251	WX1-302	WX1-302	WX1-302					
20	WX1-251	WX1-302	WX1-302	WX1-251	15	WX1-302	WX1-302	-	-					



Well Above The Rest®

Not all well tanks are created equal and we can prove it. The Amtrol Tanks on Tour™ mobile education center is traveling throughout the United States and Canada demonstrating the very real differences that make Well-X-Trol® *Well Above The Rest*®. All models are Amtrol Rewards™ eligible. Visit www.amtrolrewards.com



AMTROL Tanks on Tour™ mobile education center.



1400 Division Road, West Warwick, RI USA 02893 T: 401.884.6300
www.amtrol.com