



PLUMBING SYSTEMS

**EP BRANCH
MULTI-PORT
TEES AND ELBOWS**

LAUNCH SHEET

Fewer Connections with New Commercial EP Multi-port Tees and Elbows

Uponor's advanced Engineered Plastic (EP) Multi-port Tee and Elbow configurations feature 7 to 12 outlets to better serve the demanding applications of commercial plumbing. This approach reduces the total number of connections needed, resulting in greater design and installation flexibility. Multi-port Tees and Elbows install fast and easy with standard 1¼" copper pipe mounting brackets.

The many options provided by these new molded one-piece tees and elbows, which are available with ¾" and 1" inlets, can greatly enhance flow performance. In addition, this far more compact approach fits inside a 16-inch wall cavity and eliminates the need for an access panel.

Uponor's EP Multi-Port Tees and Elbows design provides not only the highest level of performance, but also peace of mind. Unaffected by aggressive water issues, they provide the corrosion-free, non-pitting and non-scaling performance that is not possible with copper or brass. They also address all NSF lead-content initiatives.

These advanced molded, one-piece connections are yet another example of Uponor Logic at work and one more reason to choose Wirsbo AQUAPEX® tubing and its ProPEX® fitting system for multi-family and commercial projects (both high-rise or slab-on-grade), as well as zone and home-run residential applications.

Industry Standards, Listings and Codes Met by ProPEX EP Multi-port Tees and Elbows:

Hydrostatic Temperature and Pressure Ratings:

- 180°F at 100 psi

Applicable Codes:

- UPC
- IPC
- NSPC
- NPC of Canada

Manufacturing Standards:

- ASTM F877
- ASTM F1960
- CSA B-137.5

Product Listings:

- NSF 14 and 61
- IAPMO or UPC Code
- ICC ESR 1099

Fire-rated Assemblies:

- UL V444, U372

Features and Benefits

- Designed for all commercial or large residential applications
- Reduces number of connections
- Mounts with standard brackets
- Lower costs versus metal options
- Does not require an access panel

Uponor EP Commercial Product Family Additions



¾" EP Branch Multi-port Elbow,
7 outlets (Q2077550)



¾" EP Branch Multi-port Elbow,
8 outlets (Q2087550)



1" EP Branch Multi-port Elbow,
10 outlets (Q2101000)



¾" EP Branch Multi-port Tee,
7 outlets (Q2277550)



¾" EP Branch Multi-port Tee,
8 outlets (Q2287550)

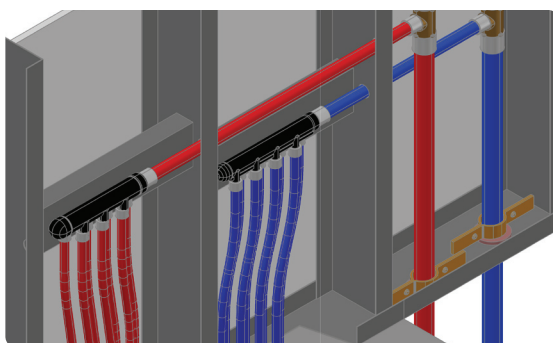


1" EP Branch Multi-port Tee,
10 outlets (Q2101051)

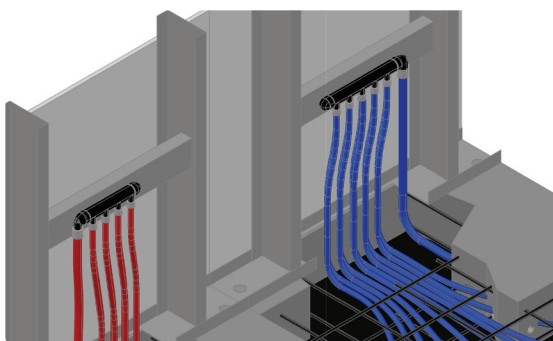


1" EP Branch Multi-port Tee,
12 outlets (Q2121051)

Part No.	Description	Pkg. Qty.	Application (optional)	List Price (ea.)
Q2077550	¾" EP Branch Multi-port Elbow, 7 outlets	5	Commercial/Slab	\$45.05
Q2087550	¾" EP Branch Multi-port Elbow, 8 outlets	5	Commercial/Slab	\$49.00
Q2101000	1" EP Branch Multi-port Elbow, 10 outlets	5	Commercial/Slab	\$52.15
Q2277550	¾" EP Branch Multi-port Tee, 7 outlets	5	Commercial/Slab	\$45.00
Q2287550	¾" EP Branch Multi-port Tee, 8 outlets	5	Commercial/Slab	\$49.20
Q2101051	1" EP Branch Multi-port Tee, 10 outlets	5	Commercial/Slab	\$52.00
Q2121051	1" EP Branch Multi-port Tee, 12 outlets	5	Commercial/Slab	\$55.75



Application drawing showing
EP Branch Multi-port Tee,
(Q2277550) and EP Branch
Multi-port Tee, (Q2287550).



Application drawing showing
EP Branch Multi-port Elbow,
(Q2087550) and EP Branch
Multi-port Elbow, (Q2101000).

Uponor, Inc.
5925 148th Street West
Apple Valley, MN 55124 USA

Tel: (800) 321-4739
Fax: (952) 891-1409
Web: www.uponor-usa.com

uponor