



Submittal Data Information

101-125

3-Speed Cartridge Circulators

Effective: December 6, 2011

Supersedes: June 24, 2011

Job: _____ Engineer: _____ Contractor: _____ Rep: _____

ITEM NO.	MODEL NO.	IMP. DIA.	G.P.M.	HEAD/FT.	H.P.	ELEC. CHAR.

Features

- Multi-Speed performance
- Fine tune to system requirements
- Highest performance & starting torque in class
- Heavy duty construction for longer life
- 4-bolt universal flange (0010 only)
- Removable high-flow Integral Flow Check (IFC*)
 - Prevents gravity flow
 - Reduces installation costs
 - Improves pump performance
- Replaceable cartridge design
- Quiet, efficient operation
- Self lubricating, no mechanical seal
- Wide range of applications
- Cast Iron, flanged construction

Materials of Construction

Casing: Cast Iron
 Integral Flow Check (IFC*):
 Body, Plunger.....Acetal
 O-ring Seal.....EPDM
 Spring.....Stainless Steel
 Stator Housing:.....Steel
 Cartridge:.....Stainless Steel
 Impeller:Non-Metallic
 Shaft:.....Ceramic
 Bearings:.....Carbon
 O-Ring & Gaskets:.....EPDM

Model Nomenclature

F – Cast Iron, Flanged
 MS – Multi-Speed
 IFC – Integral Flow Check

Performance Data

	00R	0010
Flow Range (GPM):	0-18	0-29
Head Range (FT):	0-21	0-10.5
Minimum Fluid Temperature:	40°F (4°C)	
Maximum Fluid Temperature:	230°F (110°C)	
Maximum Working Pressure:	125 psi	
Connection Sizes:	3/4", 1", 1-1/4", 1-1/2" Flanged	



FOR INDOOR USE ONLY

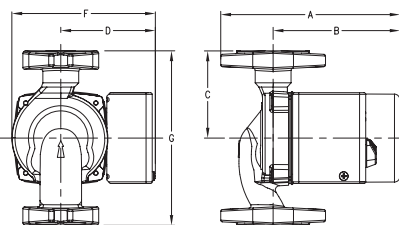
Application

The 00R 3-Speed Radiant pump is specifically designed for the flow and head requirements of today's radiant heat systems yet is adaptable for hydronic baseboard systems as well. Its 3-Speed switching capability provides fine tuning control to match a wide combination of tube diameters and length of runs. The 00R 3-Speed Radiant pump is a direct replacement for the Grundfos UPS 15-58 3-Speed. The 00R delivers the highest starting torque in its class and a removable, high-flow Integral Flow Check (IFC*) that prevents gravity flow, reduces installation costs and improves pump performance.

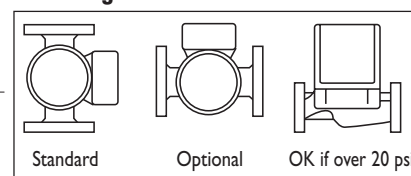
The 0010 3-Speed Service pump is designed as an ideal replacement circulator for service contractors to use on any emergency "no-heat" call. The 0010 3-Speed replaces most commonly used circulators. Simply install it and set the speed to match the original pump performance. The handy new four bolt flange matches up to any pump regardless of style, type or age.

Pump Dimensions & Weights

Cast Iron Models	A		B		C		D		F		G		Ship Wt.	
	in.	mm	in.	mm	in.	mm	in.	mm	in.	mm	in.	mm	lbs.	Kg
00R-MSF2 IFC	6-1/2	165	4-5/8	118	3-3/16	81	3-7/16	78	5-3/8	137	6-3/8	162	8	3.5
00R-MSF2-1 IFC	6	152	4-5/8	118	3-3/16	81	3-7/16	78	5-3/8	137	6-3/8	162	8	3.5
0010-MSF1-IFC	6-11/16	170	4-3/4	120	3-3/16	81	3-7/16	78	5-3/8	137	6-3/8	162	10	4.5



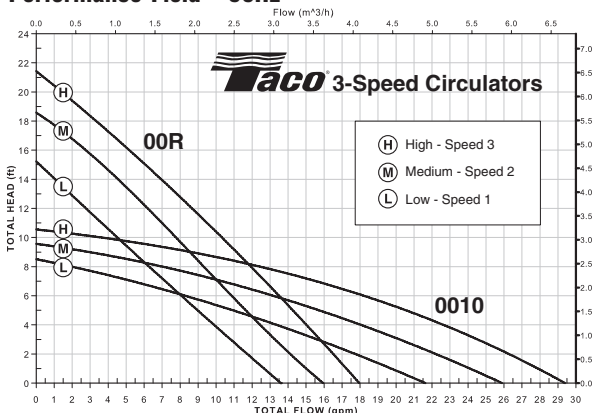
Mounting Positions



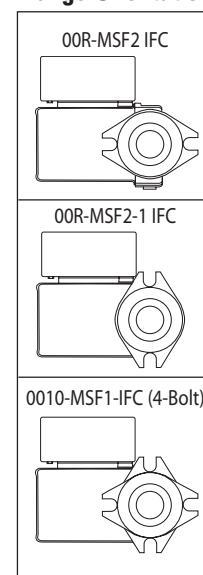
Electrical Data

Model	Volts	Hz	Ph	Amps			RPM (Speed 3)	HP
				Speed 1	Speed 2	Speed 3		
All Models	115	60	1	.71	.82	.98	3250	1/20
Motor Type	Permanent Split Capacitor Thermally Protected							

Performance Field - 60Hz



Flange Orientation



Do it Once. Do it Right.®

TACO INC., 1160 Cranston Street, Cranston, RI 02920
 TACO (Canada), Ltd., 6180 Ordan Drive, Mississauga, Ontario L5T 2B3

Telephone: (401) 942-8000

Fax: 942-2360

Telephone: (905) 564-9422

Fax: (905) 564-9436

Printed in USA

Copyright 2011

TACO, Inc.