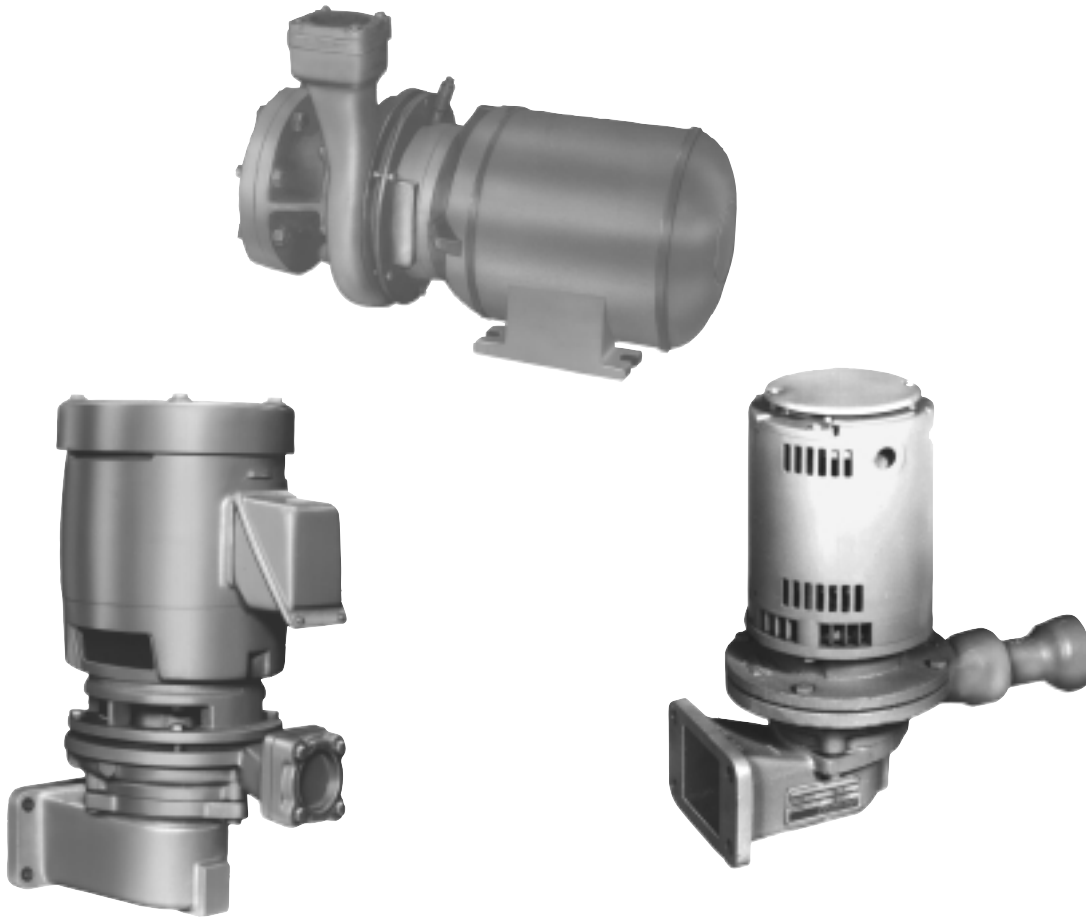




## PARTS LIST

D421P-F



# SERIES B-35

Replacement Parts for  
**Domestic Series B35**  
2 ft. NPSH Centrifugal Pumps  
Styles PF and PVF and HB-35

Domestic Pump®



# Index

How To Use This Parts List .....	3
A Word About Obsolete Pumps .....	4
Typical Assembly for 1/3 HP thru 3 HP Pumps .....	5
Typical Assembly for 5 HP thru 15 HP Pumps .....	6
Typical Assembly for <u>Horizontal</u> B-35 Pumps .....	7
613B .....	8
613HB .....	8
614B .....	9
614HB .....	9
616B .....	10
617B .....	10
618B .....	11
618HB .....	12
620B .....	13
620HB .....	14
625B .....	15
625HB .....	16
626B .....	16
627B .....	17
Footed Suction Flange Pump Components .....	18

# How to use this PARTS LIST

The unit nameplate identifies the pump by its pump combination number. Specific pump information is determined by identifying both the pump combination and the motor horsepower which is noted on the motor nameplate.

<b>DOMESTIC™</b>		
SERIES	<b>CB™</b>	
MODEL	<b>23 CB 9-20</b>	
SERIAL	<b>XXXXXX-XXXXXX</b>	
GPM	<b>9</b>	PSI <b>20</b> PUMP <b>616B</b>
POWER V.	<b>460</b>	PH. <b>3</b> HZ <b>60</b>
CONTROL V.	<b>115</b>	PH. <b>1</b> HZ <b>60</b>
TOTAL F.L. AMP.	LARGEST MOTOR F.L. AMP.	
<b>ITT Bell &amp; Gossett</b> <small>ITT Fluid Technology Corporation</small>		

<b>DOMESTIC™</b>		
SERIES	<b>616B™</b>	GPM <b>9</b>
SERIAL	<b>XXXXXX</b>	PSI <b>20</b>
<b>ITT Bell &amp; Gossett</b> <small>ITT Fluid Technology Corporation</small>		

The nameplates identify the pump in the examples as a 616B (Domestic Series B-35) rated for 9 GPM at 20 PSI. The larger nameplate notes that this pump has been furnished on a Series CB Condensate unit, Model Number 23 CB 9-20. The smaller nameplate identifies a pump that has been furnished separately.

The following procedure will result in proper parts selection:

1. Determine from the nameplate the pump combination and its capacity.
2. Refer to the motor nameplate to determine the correct motor horsepower.
3. Refer to the index to identify the appropriate page for parts selection.
4. For pumps that are available in multiple horsepower find the correct column on the pump combination page.
5. Using the referenced drawing for the pump, select the appropriate parts.
6. When ordering impellers, be sure to specify the required diameter on the order. If a diameter is not specified, a full size impeller will be furnished. (*Caution: Trimmed impellers may not be returned to the factory for credit.*) For impeller trims consult the appropriate full unit parts list.

# A Word About Obsolete Pumps

During the time that Domestic & Hoffman Pump Products have been offered, a number of design changes have occurred that necessitate the obsoleting of certain pump combinations. The following list attempts to address the more frequently requested pump identifications.

612 PF-B pumps were discontinued in 1984. The 616 PF-B is a direct replacement. Parts from the current 616 PF-B pump are dimensionally interchangeable with the 612 PF-B parts.

613 PF-B pumps in 2 and 3 HP were discontinued in 1984. At this printing, limited parts may still be obtained. Consult the factory or your representative for availability.

614 PF-B pumps in 3 HP and 10 HP were discontinued in 1984. At this printing, limited parts may still be obtained. Consult the factory or your representative for availability.

614 HB pumps in 10 HP were discontinued in 1984. At this printing, limited parts may still be obtained. Consult the factory or your representative for availability.

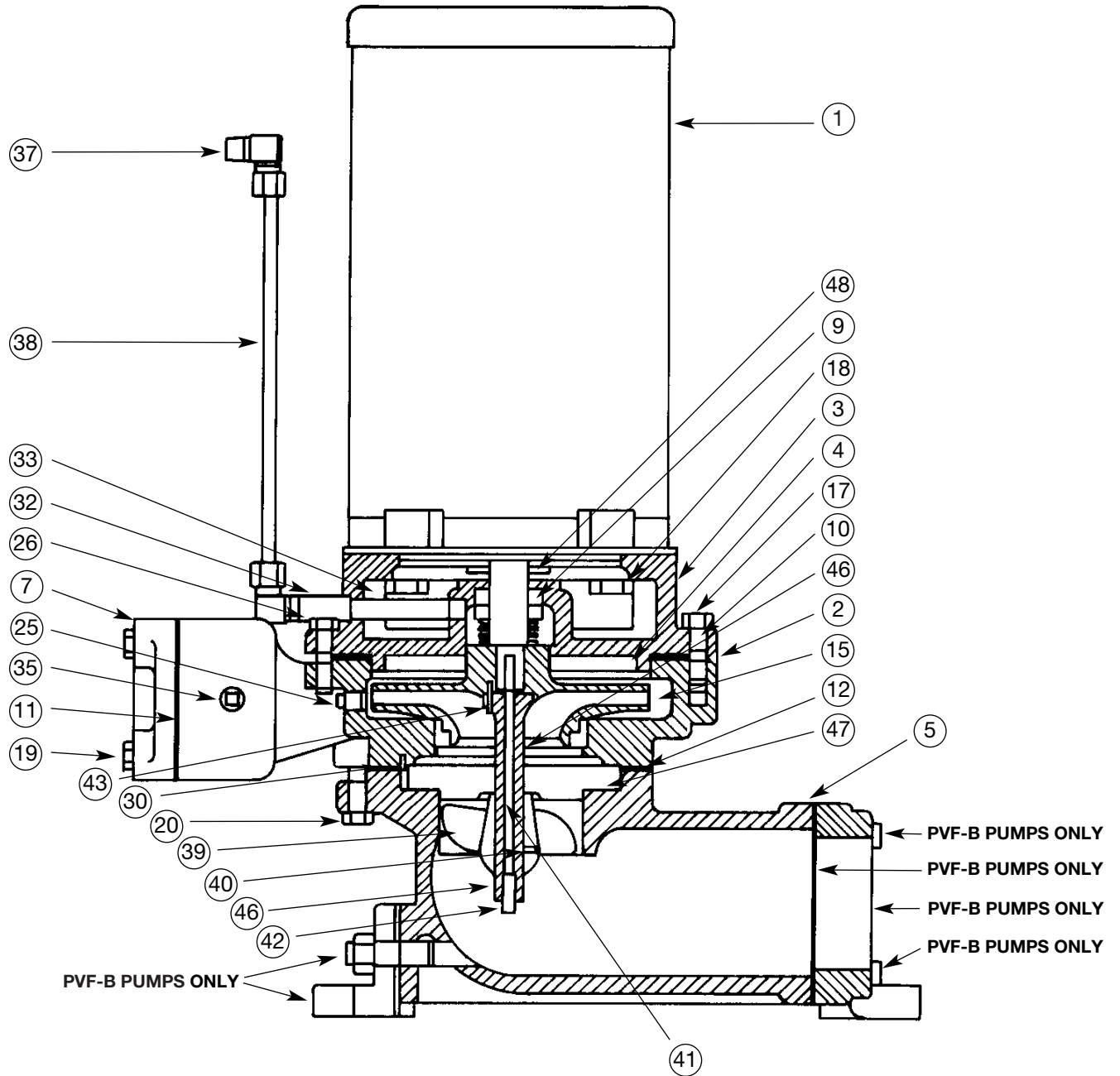
620 PF-B pumps in 2 HP were discontinued in 1984. At this printing, limited parts may still be obtained. Consult the factory or your representative for availability.

625 PF-B pumps in 7½ HP were discontinued in 1984. At this printing, limited parts may still be obtained. Consult the factory or your representative for availability.

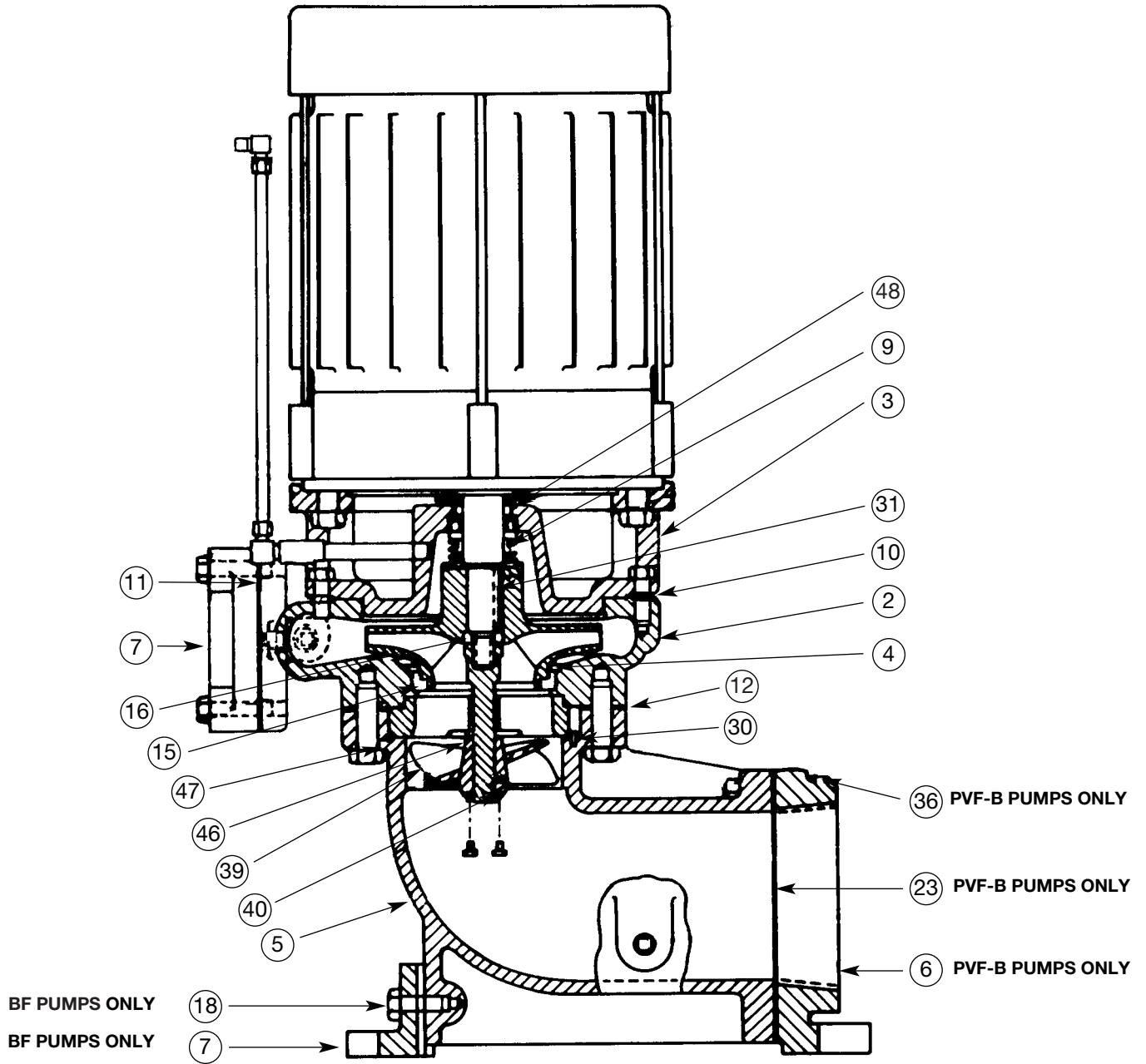
625 HB pumps in 7½ HP were discontinued in 1984. At this printing, limited parts may still be obtained. Consult the factory or your representative for availability.

627 PF-B pumps in 1½ and 2 HP were discontinued in 1984. At this printing, limited parts may still be obtained. Consult the factory or your representative for availability.

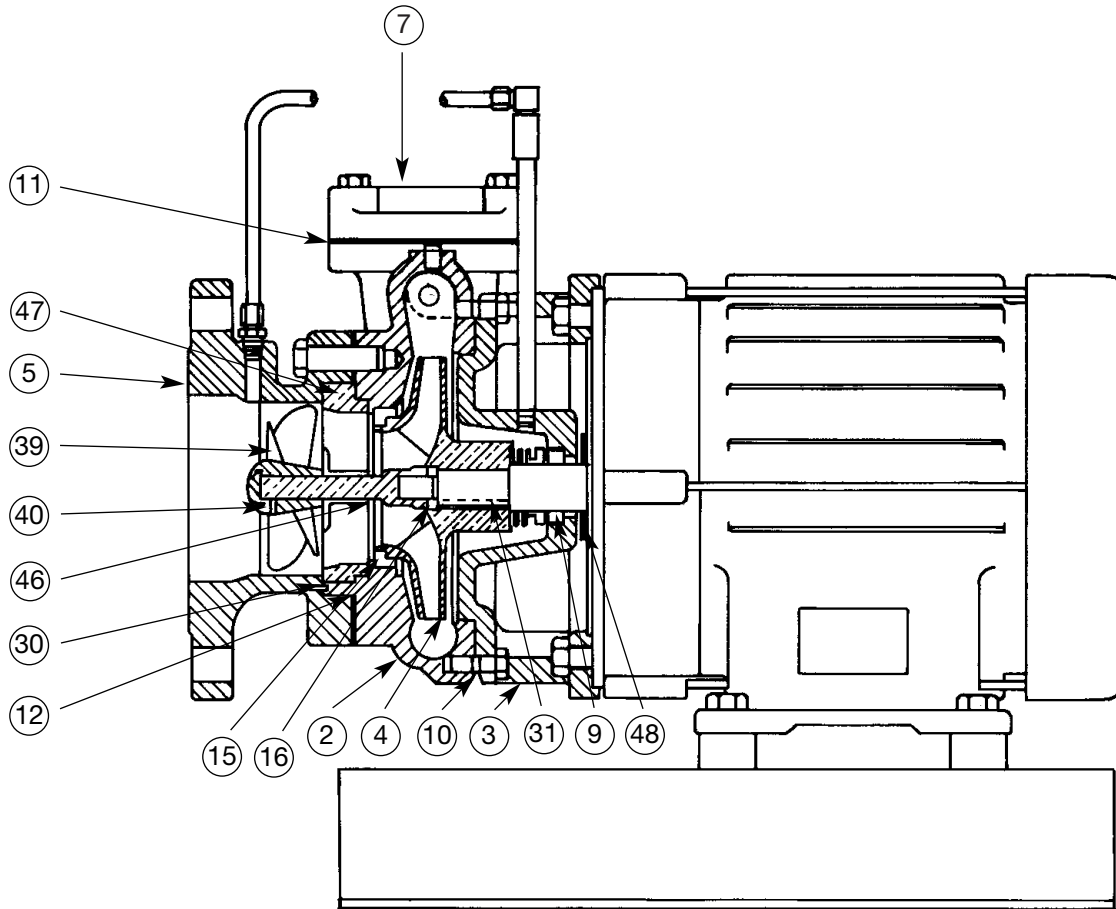
### Typical Assembly for 1/3 HP thru 3 HP Pumps



Typical Assembly for 5 HP thru 15 HP Pumps



### Typical Assembly for Horizontal B-35 Pumps



<b>613B (Style PF-B)</b>		<b>5 &amp; 7½ HP</b>
<b>Item #</b>	<b>Description</b>	<b>Part Number</b>
2	Volute with Wearing Ring	DP1627
3	Motor Bracket	DP0212
4	Impeller	DP0314
5	Suction Housing	DP0688
7	Companion Flange	DF0678
9	Seal & Gasket Kit	180011
10	Head Gasket	DG0087
11	Companion Flange Gasket	DG0141
12	Suction Housing Gasket	DG0072
46	Propeller Stem	DP0716
15	Wearing Ring	DP0483
16	Shaft Washer	DJ0280
30	Locking Pin	DJ0448
31	Impeller Key	DP0586
39	Propeller	DP0622
40	Propeller Set Screw	DJ0201
47	Diffuser	DP0828
48	Slinger	DP0851

<b>613B (Style HB)</b>		<b>5 HP</b>
<b>Item #</b>	<b>Description</b>	<b>Part Number</b>
2	Volute with Wearing Ring	DP1627
3	Motor Bracket	DP0212
4	Impeller	DP0314
5	Suction Housing	DP0686
7	Companion Flange	DF0678
9	Seal & Gasket Kit	180011
10	Head Gasket	DG0087
11	Companion Flange Gasket	DG0141
12	Suction Housing Gasket	DG0072
46	Propeller Stem	DP0716
15	Wearing Ring	DP0483
16	Shaft Washer	DJ0280
30	Locking Pin	DJ0448
31	Impeller Key	DP0586
39	Propeller	DP0622
40	Propeller Set Screw	DJ0201
47	Diffuser	DP0828
48	Slinger	DP0851



— Factory recommended spare parts



<b>614B (Style PF-B)</b>		<b>5 &amp; 7½ HP</b>
<b>Item #</b>	<b>Description</b>	<b>Part Number</b>
2	Volute with Wearing Ring	DP1632
3	Motor Bracket	DP0212
4	Impeller	DP0326
5	Suction Housing	DP0696
7	Companion Flange	DF0483
9	Seal & Gasket Kit	180011
10	Head Gasket	DG0087
11	Companion Flange Gasket	DG0142
12	Suction Housing Gasket	DG0165
46	Propeller Stem	DP0720
15	Wearing Ring	DP0484
16	Shaft Washer	DJ0280
30	Locking Pin	DJ0448
31	Impeller Key	DP0586
39	Propeller	DP0626
40	Propeller Set Screw	DJ0201
47	Diffuser	DP0822
48	Slinger	DP0851

<b>614B (Style HB)</b>		<b>5 &amp; 7½ HP</b>
<b>Item #</b>	<b>Description</b>	<b>Part Number</b>
2	Volute with Wearing Ring	DP1632
3	Motor Bracket	DP0212
4	Impeller	DP0326
5	Suction Housing	DP0984
7	Companion Flange	DF0483
9	Seal & Gasket Kit	180011
10	Head Gasket	DG0087
11	Companion Flange Gasket	DG0142
12	Suction Housing Gasket	DG0165
46	Propeller Stem	DP0720
15	Wearing Ring	DP0484
16	Shaft Washer	DJ0280
30	Locking Pin	DJ0448
31	Impeller Key	DP0586
39	Propeller	DP0626
40	Propeller Set Screw	DJ0201
47	Diffuser	DP0822
48	Slinger	DP0851

— Factory recommended spare parts

<b>616B (Style PF-B)</b>		<b>1/3 - 2 HP</b>
<b>Item #</b>	<b>Description</b>	<b>Part Number</b>
2	Volute with Wearing Ring	DP1606
3	Motor Bracket	DP0208
4	Impeller	DP0336
5	Suction Housing	DP0692
9	Seal & Gasket Kit	180014
10	Head Gasket	DG0086
12	Suction Housing Gasket	DG0166
46	Propeller Stem	DP0708
15	Wearing Ring	DP0482
30	Locking Pin	DJ0448
39	Propeller	DP0618
40	Propeller Set Screw	DJ0201
41	Locking Stud	DP0890
42	Propeller Lock Nut	DJ0225
43	Stem Locking Pin	DJ0448
47	Diffuser	DP0824
48	Slinger	DP0848


<b>617B (Style PF-B)</b>		<b>1/2 - 2 HP</b>	<b>3 HP</b>
<b>Item #</b>	<b>Description</b>	<b>Part Number</b>	<b>Part Number</b>
2	Volute with Wearing Ring	DP1607	DP1607
3	Motor Bracket	DP0216	DP0214
4	Impeller	DP0346	DP0348
5	Suction Housing	DP0692	DP0692
9	Seal & Gasket Kit	180014	180010
10	Head Gasket	DG0087	DG0087
12	Suction Housing Gasket	DG0166	DG0166
46	Propeller Stem	DP0708	DP0708
15	Wearing Ring	DP0482	DP0482
30	Locking Pin	DJ0448	DJ0448
39	Propeller	DP0618	DP0618
40	Propeller Set Screw	DJ0201	DJ0201
41	Locking Stud	DP0890	DP0887
42	Propeller Lock Nut	DJ0225	DJ0225
43	Stem Locking Pin	DJ0448	DJ0448
47	Diffuser	DP0824	DP0824
48	Slinger	DP0848	DP0849

— Factory recommended spare parts

<b>618B (Style PF-B)</b>		<b>5 &amp; 7½ HP</b>	<b>10 &amp; 15 HP</b>
<b>Item #</b>	<b>Description</b>	<b>Part Number</b>	<b>Part Number</b>
2	Volute with Wearing Ring	DP1633	DP1633
3	Motor Bracket	DP1663	DP1663
4	Impeller	DP0354	DP0352
5	Suction Housing	DP0696	DP0696
7	Companion Flange	DF0678	DF0678
9	Seal & Gasket Kit	180011	180011
10	Head Gasket	DG0089	DG0089
11	Companion Flange Gasket	DG0141	DG0141
12	Suction Housing Gasket	DG0165	DG0165
46	Propeller Stem	DP0722	DP0718
15	Wearing Ring	DP0484	DP0484
**	Propeller Washer	not req.	DJ0281
16	Shaft Washer	DJ0280	DJ0290
30	Locking Pin	DJ0448	DJ0448
31	Impeller Key	DP0586	DP0587
39	Propeller	DP0626	DP0626
40	Propeller Set Screw	DJ0201	DJ0201
47	Diffuser	DP0822	DP0822
48	Slinger	DP0851	DP0851

 — Factory recommended spare parts


<b>618B (Style HB)</b>		<b>5 &amp; 7½ HP</b>	<b>10 &amp; 15 HP</b>
<b>Item #</b>	<b>Description</b>	<b>Part Number</b>	<b>Part Number</b>
2	Volute with Wearing Ring	DP1633	DP1633
3	Motor Bracket	DP1663	DP1663
4	Impeller	DP0354	DP0352
5	Suction Housing	DP0984	DP0984
7	Companion Flange	DF0678	DF0678
9	Seal & Gasket Kit	180011	180011
10	Head Gasket	DG0089	DG0089
11	Companion Flange Gasket	DG0141	DG0141
12	Suction Housing Gasket	DG0165	DG0165
46	Propeller Stem	DP0722	DP0718
15	Wearing Ring	DP0484	DP0484
**	Propeller Washer	not req.	DJ0281
16	Shaft Washer	DJ0280	DJ0290
30	Locking Pin	DJ0448	DJ0448
31	Impeller Key	DP0586	DP0587
39	Propeller	DP0626	DP0626
40	Propeller Set Screw	DJ0201	DJ0201
47	Diffuser	DP0822	DP0822
48	Slinger	DP0851	DP0851

 — Factory recommended spare parts

<b>620B (Style PF-B)</b>		<b>3 HP</b>	<b>5 &amp; 7½ HP</b>
<b>Item #</b>	<b>Description</b>	<b>Part Number</b>	<b>Part Number</b>
2	Volute with Wearing Ring	DP1628	DP1628
3	Motor Bracket	DP1660	DP1661
4	Impeller <sup>1</sup>	DP3363	DP3364
5	Suction Housing	DP0688	DP0688
7	Companion Flange <sup>2</sup>	DF0676	DF0676
9	Seal & Gasket Kit	180010	180011
10	Head Gasket	DG0089	DG0089
11	Companion Flange Gasket	DG0141	DG0141
12	Suction Housing Gasket	DG0072	DG0072
46	Propeller Stem	DP0712	DP0716
15	Wearing Ring <sup>1</sup>	DP3365	DP3365
16	Shaft Washer	not req.	DJ0280
30	Locking Pin	DJ0447	DJ0448
31	Impeller Key	not req.	DP0586
39	Propeller	DP0622	DP0622
40	Propeller Set Screw	DJ0201	DJ0201
41	Locking Stud	DP0888	not req.
42	Propeller Lock Nut	DJ0225	not req.
43	Stem Locking Pin	DJ0448	not req.
47	Diffuser	DP0828	DP0828
48	Slinger	DP0849	DP0851

<sup>1</sup>For units manufactured before May 1991, replace impeller and wear ring.

<sup>2</sup>Some duty points may require DF0678 Flange – Consult serial card or factory.

 — Factory recommended spare parts

<b>620B (Style HB)</b>		<b>5 &amp; 7½ HP</b>
<b>Item #</b>	<b>Description</b>	<b>Part Number</b>
2	Volute with Wearing Ring	DP1628
3	Motor Bracket	DP1661
4	Impeller <sup>1</sup>	DP3364
5	Suction Housing	DP0686
7	Companion Flange <sup>2</sup>	DF0676
9	Seal & Gasket Kit	180011
10	Head Gasket	DG0089
11	Companion Flange Gasket	DG0141
12	Suction Housing Gasket	DG0072
46	Propeller Stem	DP0716
15	Wearing Ring <sup>1</sup>	DP3365
16	Shaft Washer	DJ0280
30	Locking Pin	DJ0448
31	Impeller Key	DP0586
39	Propeller	DP0622
40	Propeller Set Screw	DJ0201
47	Diffuser	DP0828
48	Slinger	DP0851

<sup>1</sup>For units manufactured before May 1991, replace impeller and wear ring.

<sup>2</sup>Some duty points may require DF0678 Flange – Consult serial card or factory.



— Factory recommended spare parts

<b>625B (Style PF-B)</b>		<b>1½ &amp; 2 HP</b>	<b>3 HP</b>	<b>5 HP</b>
<b>Item #</b>	<b>Description</b>	<b>Part Number</b>	<b>Part Number</b>	<b>Part Number</b>
2	Volute with Wearing Ring	DP1634	DP1634	DP1634
3	Motor Bracket	DP0208	DP0210	DP0226
4*	Impeller*	DP0380	DP0382	DP0384*
5	Suction Housing	DP0696	DP0696	DP0696
7	Companion Flange	DF0678	DF0678	DF0678
9	Seal & Gasket Kit	180014	180010	180011
10	Head Gasket	DG0086	DG0086	DG0086
11	Companion Flange Gasket	DG0141	DG0141	DG0141
12	Suction Housing Gasket	DG0165	DG0165	DG0165
46	Propeller Stem	DP0710	DP0710	DP0724
15	Wearing Ring	DP0484	DP0484	DP0484
30	Locking Pin	DJ0447	DJ0447	not req.
31	Impeller Key	not req.	not req.	DP0586
39	Propeller	DP0626	DP0626	DP0626
40	Propeller Set Screw	DJ0201	DJ0201	DJ0201
41	Locking Stud	DP0892	DP0888	not req.
42	Propeller Lock Nut	DJ0225	DJ0225	not req.
43	Stem Locking Pin	DJ0448	DJ0448	DJ0448
47	Diffuser	DP0822	DP0822	DP0822
48	Slinger	DP0848	DP0849	DP0851
Misc.*	Seal Spring Holder	Not Req.	Not Req.	DP3583*

\* Required for units manufactured before November 1992, when replacing impeller.  
All units manufactured after November 1992, use seal spring holder.

 — Factory recommended spare parts

<b>625B (Style HB)</b>		<b>5 HP</b>
<b>Item #</b>	<b>Description</b>	<b>Part Number</b>
2	Volute with Wearing Ring	DP1634
3	Motor Bracket	DP0226
4*	Impeller*	DP0384*
5	Suction Housing	DP0984
7	Companion Flange	DF0678
9	Seal & Gasket Kit	180011
10	Head Gasket	DG0086
11	Companion Flange Gasket	DG0141
12	Suction Housing Gasket	DG0165
46	Propeller Stem	DP0724
15	Wearing Ring	DP0484
31	Impeller Key	DP0586
39	Propeller	DP0626
40	Propeller Set Screw	DJ0201
43	Stem Locking Pin	DJ0448
47	Diffuser	DP0822
48	Slinger	DP0851
Misc.*	Seal Spring Holder	DP3583*

<b>626B (Style PF-B)</b>		<b>1 - 2 HP</b>	<b>3 HP</b>
<b>Item #</b>	<b>Description</b>	<b>Part Number</b>	<b>Part Number</b>
2	Volute with Wearing Ring	DP1629	DP1629
3	Motor Bracket	DP0208	DP0210
4	Impeller	DP0390	DP0392
5	Suction Housing	DP0688	DP0688
7	Companion Flange	DF0678	DF0678
9	Seal & Gasket Kit	180014	180010
10	Head Gasket	DG0086	DG0086
11	Companion Flange Gasket	DG0141	DG0141
12	Suction Housing Gasket	DG0072	DG0072
46	Propeller Stem	DP0712	DP0712
15	Wearing Ring	DP0483	DP0483
30	Locking Pin	DJ0447	DJ0447
39	Propeller	DP0622	DP0622
40	Propeller Set Screw	DJ0201	DJ0201
41	Locking Stud	DP0892	DP0888
42	Propeller Lock Nut	DJ0225	DJ0225
43	Stem Locking Pin	DJ0448	DJ0448
47	Diffuser	DP0828	DP0828
48	Slinger	DP0848	DP0849

\* Required for units manufactured before November 1992, when replacing impeller.  
All units manufactured after November 1992, use seal spring holder.

— Factory recommended spare parts



<b>627B (Style PF-B)</b>		<b>3 HP</b>
<b>Item #</b>	<b>Description</b>	<b>Part Number</b>
2	Volute with Wearing Ring	DP1612
3	Motor Bracket	DP0214
4	Impeller	DP0400
5	Suction Housing	DP0688
7	Companion Flange	DF0678
9	Seal & Gasket Kit	180010
10	Head Gasket	DG0087
11	Companion Flange Gasket	DG0141
12	Suction Housing Gasket	DG0072
46	Propeller Stem	DP0712
15	Wearing Ring	DP0486
30	Locking Pin	DJ0447
39	Propeller	DP0622
40	Propeller Set Screw	DJ0201
41	Locking Stud	DP0888
42	Propeller Lock Nut	DJ0225
43	Stem Locking Pin	DJ0448
47	Diffuser	DP0828
48	Slinger	DP0849



— Factory recommended spare parts

## Footed Suction Flange Components (2")

Description	Part #	Qty
Suction Flange Gasket	DG0060	1
Stud	DJ0478	1
Capscrew	P01260	4
Hex Nut	F11400	5
Support Foot	DM0416	1
Suction Flange	DP0998	1

## Footed Suction Flange Components (2 1/2")

Description	Part #	Qty
Suction Flange Gasket	DG0060	1
Stud	DJ0478	1
Capscrew	P01260	4
Hex Nut	F11400	5
Support Foot	DM0416	1
Suction Flange	DP0992	1

## Footed Suction Flange Components (4")

Description	Part #	Qty
Suction Flange Gasket	DG0157	1
Capscrew	P19480	1
Capscrew	F11400	4
Support Foot	DM0416	1
Suction Flange	DP0950	1



**Domestic Pump**

© COPYRIGHT 1984, 2004 BY ITT INDUSTRIES, INC.

PRINTED IN U.S.A. 8-04

**USA**  
Bell & Gossett  
8200 N. Austin Avenue  
Morton Grove, IL 60053  
Phone: (847) 966-3700  
Facsimile: (847) 966-9052  
<http://www.domesticpump.com>



**ISO 9001  
Certified**