

The Quick Connect ICE MAKER KIT

**ONLY
\$25.99**



Fast and Secure Installations

- No tools required
- Utilizes John Guest® Quick-Connect Technology with 50 years of proven performance

Superior Design

- Installs in minutes onto existing plumbing
- High Corrosion Resistant Material

Built in Shut-off Valve

- Eliminates the use of a self piercing valve
- 1/4 turn shut-off provides simple ability to service installation without interrupting water flow

Part Number: ICE MAKER KIT \$25.99

**Easy to follow instructions
on packaging**

Also for use in:

- Under Counter Water Filtration Systems
- Under Counter Chillers or Ice Makers
- Counter Top Water Filters/Faucets
- Reverse Osmosis Systems

For ordering or additional information contact

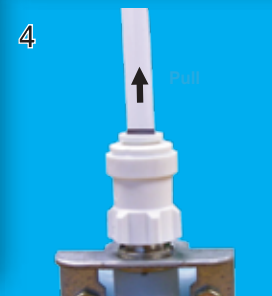
JG John Guest®

1.800.94 JG USA • 973.808.5600
info@jgusa.com • www.johnguest.com

Easy, Quick to install, and Affordable.

Part Number: ICE MAKER KIT

Refrigerator Hookup



TO DISCONNECT

To disconnect, ensure that the system is depressurized, push the collet square against the fitting. With the collet held in this position the tube can be removed.



Lead Free

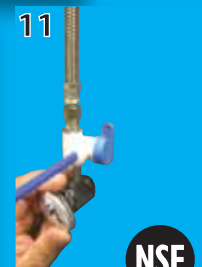
Ice Maker Kit Includes:

- (1) 1/4" O.D. Angle Stop Valve
- (1) 1/4" O.D. Connector
- (25') 1/4" Polyethylene Tubing



Scan this code to view our entire Potable Water Line of Quick Connect fittings

Water Supply Hookup



NSF

NSF 51
NSF 61/9-G