

NSF CONSTRUCTION COMMERCIAL GAS WATER HEATER

INSTALLATION INSTRUCTIONS

THE MANUFACTURER OF THIS WATER HEATER WILL NOT BE LIABLE FOR ANY DAMAGE RESULTING FROM FAILURE TO COMPLY WITH THESE INSTRUCTIONS. READ THESE INSTRUCTIONS THOROUGHLY BEFORE STARTING.

For safety and convenience, the NSF construction components must be installed and serviced by a qualified technician.

The water heater must be as close to the desired installation location as possible before proceeding with the following instructions.

Refer to the installation instructions provided with this water heater before proceeding with the following instructions.

ATTENTION: The installation of NSF construction material requires two (2) individuals capable of supporting the water heater.

NSF Kit Required		
Model	No. of Legs	NSF Kit Part No.
38, 65, 75, 80, 100	3	265-44541-01
80, 100	4	265-44541-02

Tools and Materials Required:

- Three (3) or four (4) leg extensions (provided)
- Three (3) or four (4) leg extension backing plates (provided)
- Two (2) Control box seals (provided)
- Four (4) sheet metal screws (provided)
- Six (6) or eight (8) 3/8" x 1" bolts (provided)
- Six (6) or eight (8) 3/8" lock washers (provided)
- Six (6) or eight (8) 3/8" flat washers (provided)
- NSF label (provided) attached to these instructions
- 1/4" nut driver and/or drive tool
- 9/16" socket and ratchet and/or open-end wrench
- Two (2) or three (3) 12" high load-bearing object (example: 12" tall cement block)

Installation Procedure:

1. Balance the water heater on two (2) legs lifting the remaining leg(s) sufficiently to allow for the assembly of the leg extensions (**see Figure 1**).

WARNING: Make certain the water heater is balanced and supported properly when conducting these steps. Damage and/or injury may result if failure to comply.

2. Place the backing plate on the inside of the leg (**see Figure 2**).
3. Place the leg extension on the outside of the leg (**see Figure 2**).
4. Place the lock washer and flat washer on the bolt.
5. Thread the bolt and washers through the leg extension, leg, and into the backing plate, Tighten with socket and/or wrench (**see Figure 2**).

WARNING: Be sure bolts are tightened properly. Damage and/or injury may result if failure to comply.

6. Repeat steps 1 through 5 for the remaining leg(s). Use two (2) or three (3) 12" high load-bearing objects for supporting the water heater when assembling the remaining leg extensions (**see Figure 3 & 4**).
Note: load-bearing objects must be located between the legs but must not be placed under the burner assembly or burner box.
7. When all leg extensions have been assembled to legs, attached control box covers to control using sheet metal screws. Two (2) covers are required. Attached one (1) to topside of box and One (1) to bottom side of box (**see Figure 5**).
8. Place NSF label on or adjacent to rating plate.

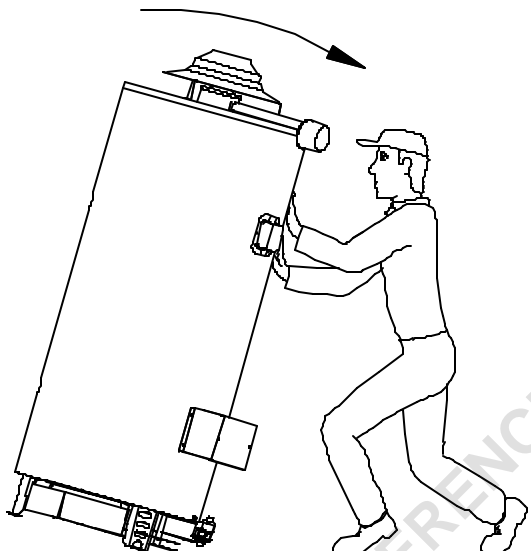


Figure 1

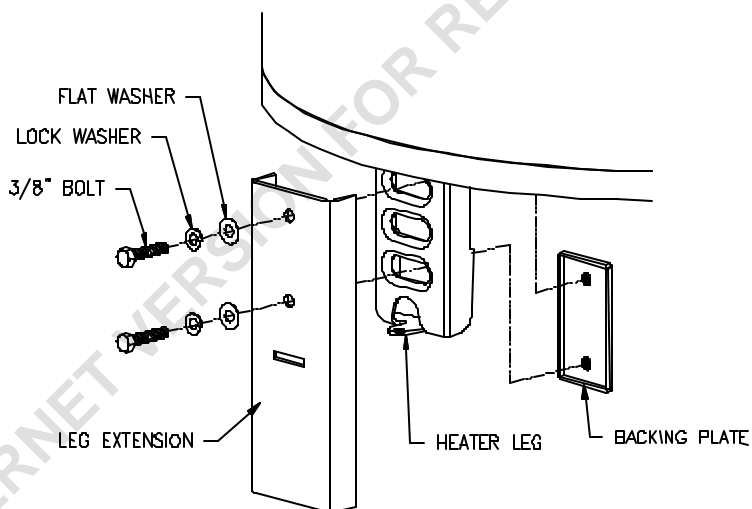


Figure 2

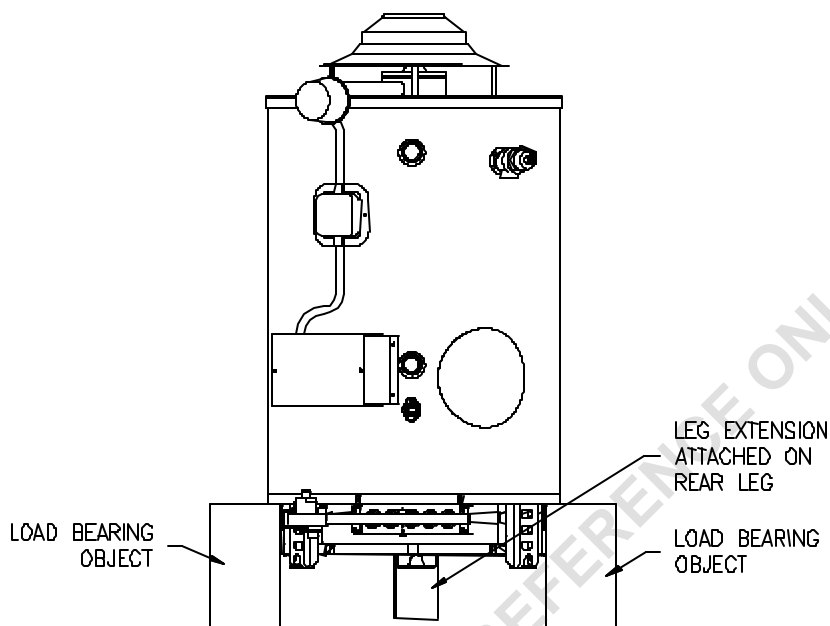


Figure 3
Commercial gas models with three (3) legs

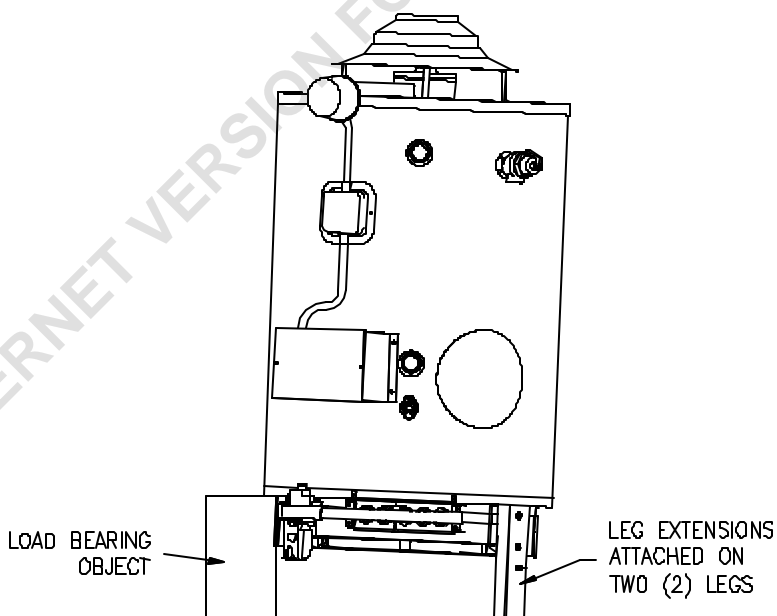


Figure 4
Commercial gas models with four (4) legs

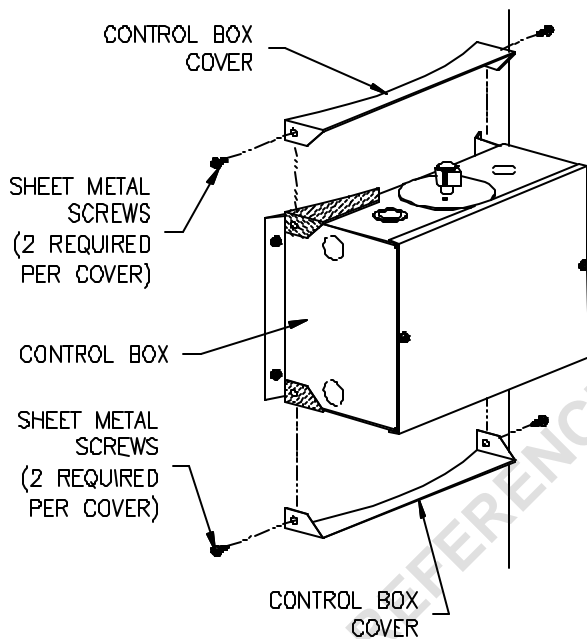


Figure 5

NOTES

INTERNET VERSION FOR REFERENCE ONLY

NOTES

INTERNET VERSION FOR REFERENCE ONLY

NOTES

INTERNET VERSION FOR REFERENCE ONLY