

CLWTM Series

High Efficiency Oil-Fired Water Boiler



 **New Yorker[®]**
RESIDENTIAL HEATING BOILERS

Why Hydronic Heat by New Yorker?



New Yorker has produced a variety of boilers for a wide range of applications with simple installation and service. As part of the New Yorker family of products, the CLW oil-fired cast iron boiler delivers the proven features that have made New Yorker the choice of heating professionals nationwide.



For Years of Comfort

New Yorker cast iron boilers combine the economy and durability of cast iron with the reliability of high quality components.

An Economical Choice

The CLW cast iron heat exchanger and boiler design maximize heat transfer for the most efficient use of fuel—saving valuable heating dollars. With an optional built-in tankless domestic water heater, it can also provide abundant hot water for your household. Add an Annual Fuel Utilization Efficiency (AFUE) up to 83.2% and the CLW Series is an economical choice in home heating.

Durable

The CLW Series' cast iron heat exchanger, with cast iron section connectors, resists petroleum based chemicals such as anti-freeze which can deteriorate rubber seals used by some competitors. What this means to you is increased longevity of your boiler's life.

Reliable

The New Yorker CLW Series Boiler uses only name brand controls and accessories, giving you years of comfortable, reliable heating. The heat exchanger construction also meets the requirements of the ASME Boiler and Pressure Vessel Code which ensures the quality and safety of your boiler.

New Yorker stands behind the heat exchanger of the CLW Series with a Lifetime Limited Warranty. See your installing contractor for more warranty information.

Easy to Own

- The cast iron heat exchanger is designed to allow cleaning access from the top or side — cutting time and cost on yearly service calls.
- A burner swing door provides easy access to the combustion chamber for fast and thorough servicing.
- The CLW Series is available as a completely packaged boiler which saves time and money when installing.
- The CLW heat exchanger has a high water capacity making it ideal for radiant floor heat and cast iron radiators.
- Adding a boiler powered hot water storage tank provides abundant hot water for domestic use, hot tubs, spas, and whirlpools.

Advantages of the CLW

ADVANTAGES

Top Quality Components

are standard, including Beckett burners, Taco circulators, and Honeywell controls.

The Cast Iron Heat Exchanger
provides long life and dependability.

Flame Retention Burner
and natural draft firing ensure
high efficiency combustion.

Cast Iron Section Connectors
are resistant to chemicals and
increases the longevity of your boiler.

**Steel Insulated
Burner Swing Door**
allows easy access to the
combustion chamber for ease
of service.

Dual Firing Rates
allow you to match your specific
household heating demands.

Deluxe Insulated Jacket
increases efficiency by reducing
stand-by heat losses.

**Built-in Tankless Domestic
Water Heater (optional)**
combines your home heating and
hot water into one heat source —
the CLW boiler.

Cast Iron Wet Base Design

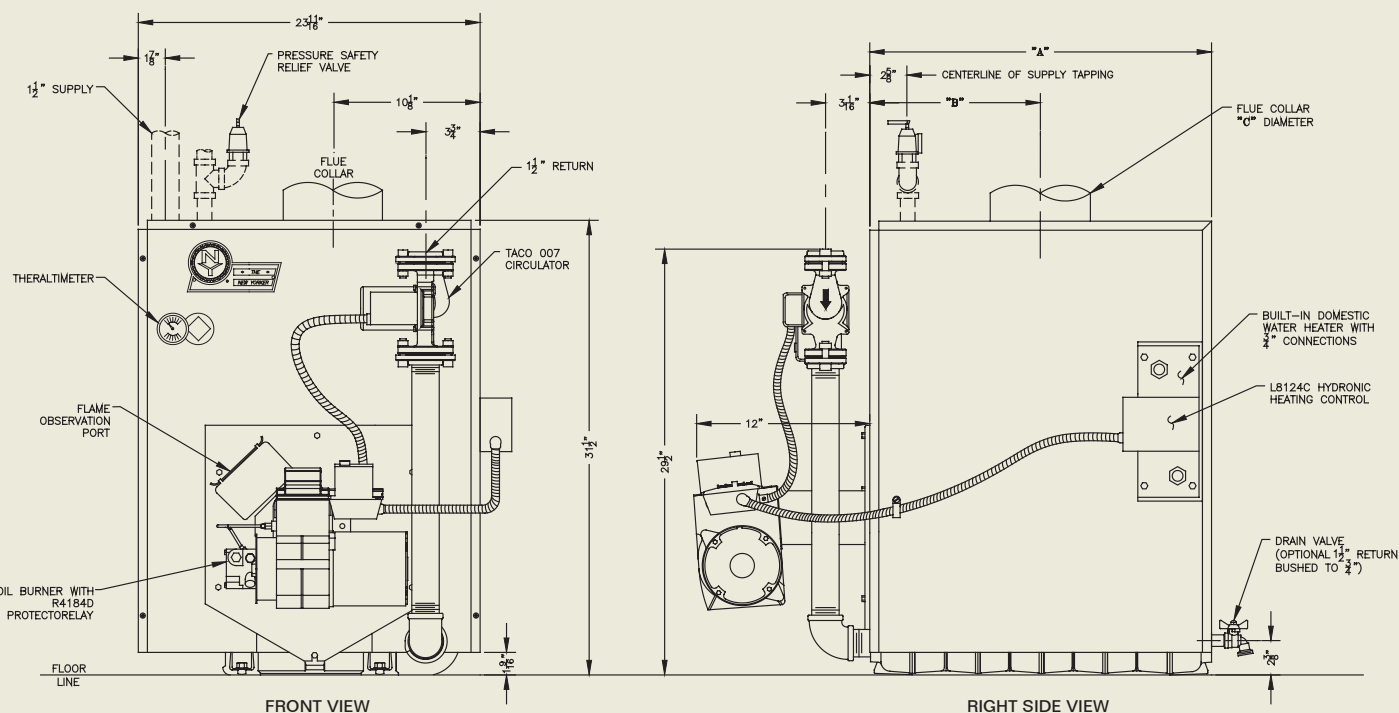
provides more heat transfer, for
increased heating efficiency, by
surrounding the flame with water-
backed surfaces.



Ratings & Specifications

Model	CLW-3	CLW-4	CLW-5	CLW-6
DOE Heating Capacity MBH	88 114	118 154	148 189	178 230
Net IBR Water MBH	77 99	103 134	129 164	155 200
IBR Firing Rate GPH	.75 1.00	1.00 1.35	1.25 1.65	1.50 2.00
AFUE %	83.1 80.2	83.1 80.3	83.2 80.4	83.2 80.5
Chimney Requirements	8" x 8" x 15'	8" x 8" x 15'	8" x 8" x 15'	8" x 8" x 15'
Tankless Heater Capacity GPM	3-1/4	3-1/2	4	4-1/2
Jacket Depth - 'A'	15-7/8"	19-7/8"	23-7/8"	27-7/8"
Jacket Rear to Centerline of Flue - 'B'	7-1/4"	9-1/4"	11-1/4"	13-1/4"
Flue Collar Diameter - 'C'	6"	6"	7"	7"
Shipping Weight (lbs.)	494	550	655	760

IBR firing rate based on 140,000 BTU/gal. #2 fuel oil.
Design working pressure: 30 PSIG, water only



*Boiler shipped with circulator not mounted.



© 2005 New Yorker Boiler Company, Inc.
Hatfield, PA
(215) 855-8055
www.newyorkerboiler.com
PL81420101000-12/05-5Ms

