

# CLS<sup>TM</sup> CLS Series

High Efficiency Oil-Fired Steam Boiler



**New Yorker<sup>®</sup>**  
RESIDENTIAL HEATING BOILERS

# NEW YORKER

## Why Hydronic Heat by New Yorker?



New Yorker has produced a variety of boilers for a wide range of applications with simple installation and service. As part of the New Yorker family of products, the CLS oil-fired cast iron boiler delivers the proven features that have made New Yorker the choice of heating professionals nationwide.



### For Years of Comfort

New Yorker cast iron boilers provide years of home heating comfort by combining economical efficiency, durable construction, and reliability.

### An Economical Choice

The CLS cast iron heat exchanger and boiler design maximize heat transfer for the most efficient use of fuel—saving valuable heating dollars. With an optional built-in tankless domestic water heater, it can also provide abundant hot water for your household. Add annual fuel efficiencies up to 81.8% and the CLS Series is an economical choice in home heating.

### Durable

The CLS Series' cast iron heat exchanger, with metal section connectors, is immune to petroleum based chemicals such as anti-freeze, which can deteriorate rubber seals used by some competitors. This means a longer boiler life and peace of mind for you.

### Reliable

The New Yorker CLS Series Boiler uses only name brand controls and accessories, giving you years of comfortable, reliable heating. The heat exchanger construction also meets the requirements of the ASME boiler and pressure vessel code which ensures the quality and safety of your boiler.

New Yorker stands behind the heat exchanger of the CLS Series with a 10-year Limited Warranty. See your installing contractor for more warranty information.

### Easy to Own

- The New Yorker CLS Series cast iron heat exchanger is accessible from the top and sides for easy cleaning and maintenance.
- A burner swing door provides easy access to the combustion chamber for fast and easy servicing.
- The CLS Series is available completely factory assembled and wired for ease of installation which saves time and money.
- The CLS is designed with all the necessary tappings and controls to make steam replacements easy.
- Adding a boiler powered indirect water heater provides abundant hot water for domestic use, hot tubs, spas, and whirlpools.

# Advantages of the CLS

# ADVANTAGES

## Top Quality Components

are standard, including Beckett burner, Taco circulator, and Honeywell controls.

- 15 PSI safety valve
  - PA404A pressuretrol
  - Gauge glass set
  - MM PS801 Probe LWCO
- are also standard.



## The Cast Iron Heat Exchanger

provides long life and dependability.

## Flame Retention Burner

and natural draft firing ensure high efficiency combustion.

## Metal Section Connectors

are resistant to chemicals and increases the longevity of your boiler.

## Steel Insulated Burner Swing Door

allows easy access to the combustion chamber for ease of service.

## Built-in Tankless Domestic Water Heater (optional)

combines your home heating and hot water into one heat source — the CLS boiler.

## Available in 6 sizes,

with heating capacities from 120 to 263 MBH, so your specific household needs can be met.

## Deluxe Insulated Jacket

increases efficiency by reducing stand-by heat losses.

# Ratings & Specifications

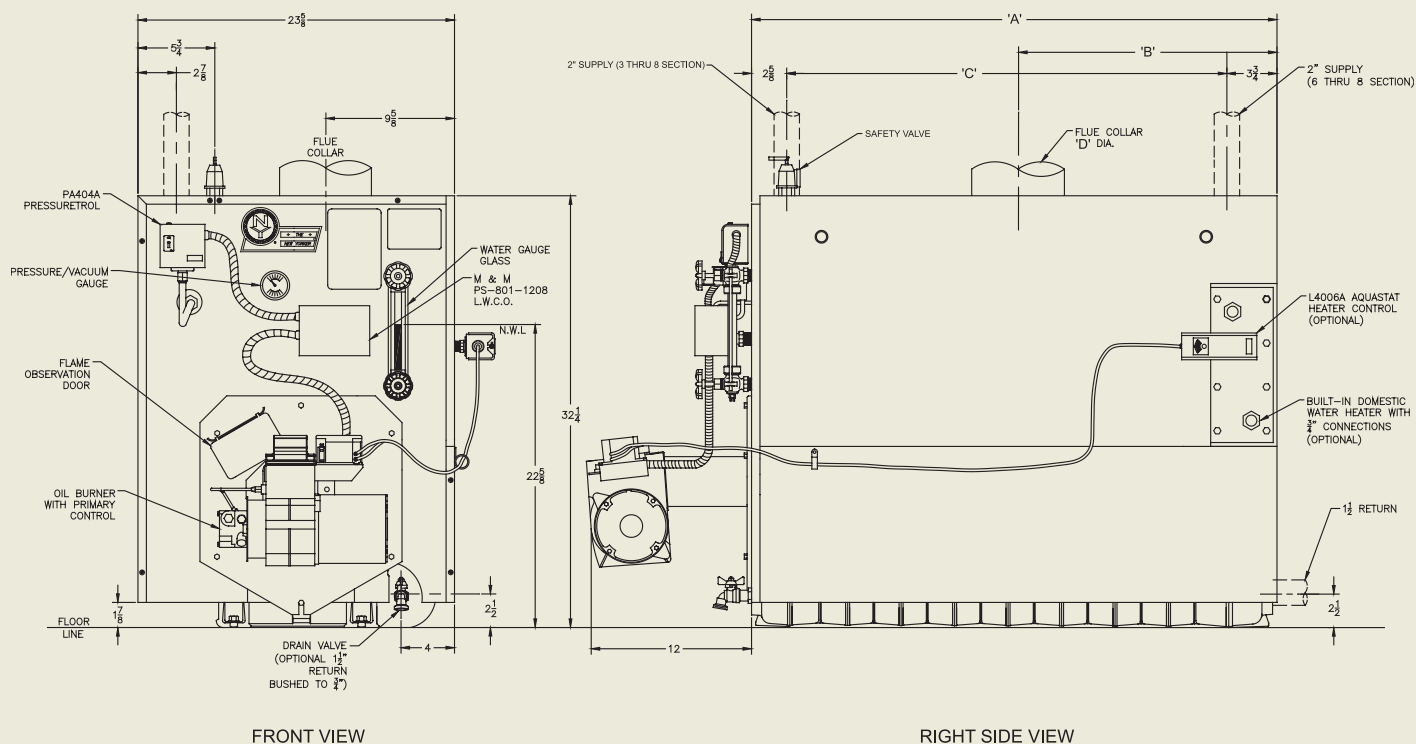
Model	CLS-3	CLS-4	CLS-5	CLS-6	CLS-7	CLS-8
<b>DOE Heating Capacity MBH</b>	120	154	189	219	242	263*
<b>Net IBR Steam MBH</b>	90	116	142	164	182	197
<b>IBR Firing Rate GPH</b>	1.05	1.35	1.65	1.90	2.10	2.35
<b>Net IBR Steam (sq. ft.)</b>	375	483	592	683	758	822
<b>AFUE %</b>	81.4	81.3	81.2	81.5	81.8	84.2**
<b>Chimney Requirements</b>	8" x 8" x 15'	8" x 8" x 15'	8" x 8" x 15'	8" x 8" x 15'	8" x 8" x 15'	8" x 12" x 15'
<b>Tankless Heater Capacity GPM</b>	2-3/4"	3"	3-1/4"	3-3/4"	3-3/4"	4"
<b>Jacket Depth - 'A'</b>	15-3/8"	19-3/8"	23-3/8"	27-3/8"	31-3/8"	35-3/8"
<b>Jacket Rear to Centerline of Flue - 'B'</b>	8-3/8"	10-3/8"	12-3/8"	14-3/8"	16-3/8"	18-3/8"
<b>Flue Collar - 'C'</b>	6"	6"	7"	7"	8"	8"
<b>Shipping Weight (lbs.)</b>	448	545	644	743	842	941

IBR firing rate based on 140,000 BTU/gal. #2 fuel oil (not nozzle size.)

Design working pressure 15 PSIG, steam only.

\* IBR gross output

\*\*Combustion Efficiency



\*Boiler shipped with circulator not mounted.



© 2006 New Yorker Boiler Company, Inc.

Hatfield, PA

(215) 855-8055

www.newyorkerboiler.com

PL81420101001-4/06-5Ms

MADE IN



U. S. A.