



RADIANT HEAT

A WARM FLOOR MAKES A WARM HOME

DISCOVER THE COMFORT

Your home provides an escape from this busy world. It's a place to build memories with family and friends. A shelter from the storm.

As you build a new home or renovate your current one, give careful thought to your home heating system. Radiant heating provides warm, gentle heat unmatched in comfort, efficiency and flexibility.

REHAU's radiant heating system works by circulating warm water through a network of pipes placed in the floor, wall, or ceiling. Heat is gently radiated upward, warming the objects in the room to create a comfortable environment.

Radiant heat is the healthy, clean choice

- Does not dry air like conventional systems
- Keeps floors warm and dry, inhibiting growth of mold and mildew
- No noisy fans or blown air to distribute dust and other allergens
- Makes hard surface flooring comfortable

The power of possibility

Radiant heating can be installed in a single room or throughout your home. There are no heaters, radiators or vents—giving you more design freedom and open space. It's a great choice for today's open floor plans, especially in areas with high ceilings. A variety of warm-water heat sources can be used, including boilers, geothermal heat pumps, solar collection systems and water heaters.

Energy efficient

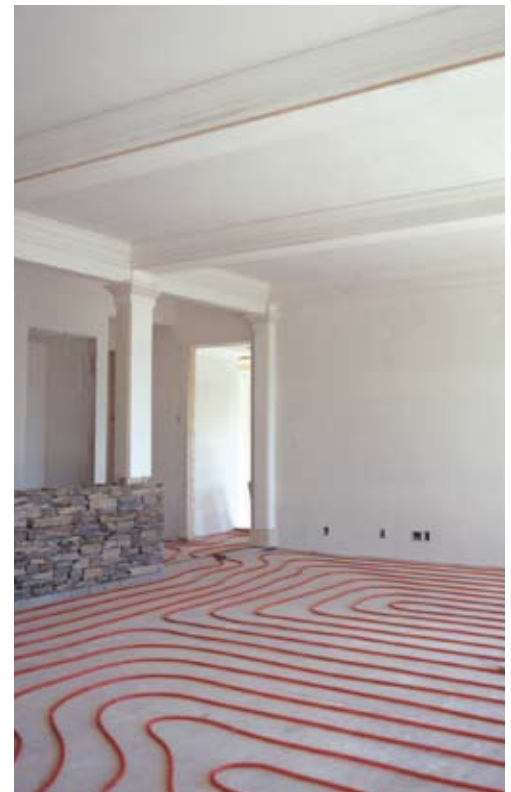
Radiant heating warms the objects in the room. This allows thermostats to be lowered as much as 4°F (2°C) without sacrificing comfort levels. These lower operating temperatures can reduce fuel consumption, typically saving between 20 and 30 percent per year in heating expenses.

Room-to-room control

It's easy to zone the system using multiple thermostats. This allows you to adjust temperatures in a single room or a group of rooms, based on activity and usage levels. For example, a guest room over the garage can be kept at a lower temperature when not in use.

Delivering outstanding performance

- Economical
- Safe
- Low maintenance
- Comfortable





INSTALLATION OPTIONS

AN EFFECTIVE SOLUTION FOR EVERY PROJECT

Whether you are building a new home or renovating your current home, professional installers can design a radiant system that provides maximum comfort and efficiency.

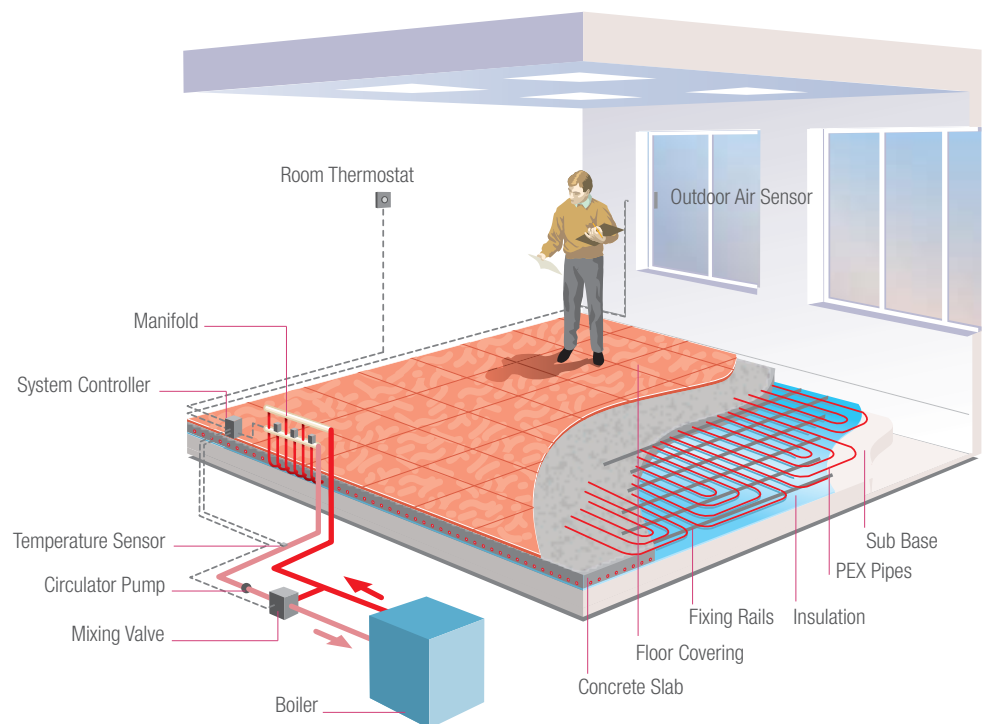
Radiant floors

Most common in new homes, poured installations involve either pouring gypsum-based concrete over pipes, or encasing pipes in a concrete slab. When the system is activated, warm water circulates through the pipes and the concrete is warmed. The floor retains the heat and evenly distributes the warmth throughout the room.

When a poured floor just isn't practical, such as when remodeling an existing room, pipes can be installed under a suspended wood floor, with pipes placed in the joist space. Heat transfer plates are then used to evenly distribute the heat. For the ultimate radiant solution, the RAUPANEL™ system installs directly over subfloors and provides the most efficient heat transfer.

Other radiant surfaces

Floors are not the only possibilities for radiant. Don't overlook other "panels," such as walls and ceilings, which make ideal radiant surfaces. With the proper design techniques, you'll enjoy a highly effective radiant system when pipes are placed within a stud wall or ceiling. These other surfaces can provide a perfect solution for retrofit radiant systems and rooms with floor areas that are too small to provide sufficient heat.



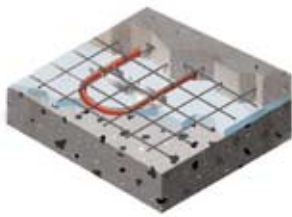
This illustration demonstrates how a typical system works.

FLOOR COVERINGS

FROM HARDWOOD TO TILE, WE'VE GOT IT COVERED

REHAU's radiant heating system is compatible with a variety of floor coverings, including hardwood, carpet, vinyl, ceramic tile and marble.

It's important to let your contractor know what type of floor covering you plan on installing so that you can achieve the maximum benefit from your radiant system.



Pipes can be installed in a normal concrete slab, either on or below grade, usually with no design changes to the slab.



Pipes can also be installed above suspended wood floors and encased in a thin slab overpour, usually 1.5\"



In some structures, it is more convenient to install pipes in the joist space under a suspended wood floor.

REHAU's radiant heating system can be installed using a variety of techniques, depending on the construction method.

Get into the groove with RAUPANEL

Whether you're renovating a single room or building a new home, REHAU's innovative RAUPANEL system is ideal because it is installed without a concrete overpour. The system is placed directly on top of the subfloor and the pipe snaps into grooves in the panels. RAUPANEL is compatible with all commonly used floor coverings, including carpet, hardwood and ceramic tile. This patented system offers optimal performance and responds quickly to heating requirements.



RAUPANEL is a great option for retrofit and new construction applications because it is installed without the concrete overpour. RAUPANEL can work with all types of flooring.



LEADING THE FIELD FOR OVER 35 YEARS

YOUR FAMILY DESERVES THE BEST

RAUPEX® is REHAU's trade name for its specially formulated cross-linked polyethylene (PEXa) pipe, manufactured using the high-pressure peroxide (Engel) method.



We pioneered PEX

REHAU has an established history of quality based on more than 35 years of experience in the design and manufacture of radiant heating systems.

The main component of REHAU's radiant heating system is RAUPEX cross-linked polyethylene (PEXa) pipe. In 1968, REHAU pioneered PEX with the introduction of the first PEXa pipes. This means when you're dealing with REHAU, you're dealing with an industry leader.

A proven product

With RAUPEX pipe, you'll have the comfort of knowing that there are over a billion feet already installed in homes just like yours. In addition, REHAU offers a 25-year limited warranty on our pipe and fittings.

The EVERLOC® connection

REHAU's EVERLOC fitting system provides a reliable, long term connection. EVERLOC is well known for its strength, dependability and ease of use.

Installation seals the deal

Installing a radiant heating system is definitely not a weekend "do-it-yourself" project. The proper installation of these systems requires the help of a professional installer. REHAU strongly recommends working with a contractor experienced in the design and installation of radiant heating systems.

Feel the warmth

For more information, visit us online at www.na.rehau.com/heating. For a dealer in your area, go to www.na.rehau.com/dealers.





MORE INNOVATIVE SOLUTIONS

FOR A COMFORTABLE, HEALTHY HOME

The quality products and innovative technology used in our radiant heating systems are also the foundation of these smart solutions.



Snow and ice melting

Imagine never having to shovel snow again. Snow and ice melting systems provide a safe and reliable way to keep outdoor areas clear of snow and ice. They're configured much like radiant heating systems, except they are installed underneath driveways, sidewalks, patios and carports. With proper design and installation, REHAU's systems provide long-term performance and reliability.



PEX plumbing

REHAU's PEX plumbing system is economical and durable, and is certified by NSF International and CSA International. Your family will enjoy the benefits of a quiet, dependable system that delivers clean, pure drinking water.



Residential fire protection

REHAU's FIREPEX™ residential fire protection sprinkler system improves protection against injury, loss of life and property damage. Residential fire protection can be integrated with the home's cold water plumbing system, or installed as a stand alone system.



PLASTICS PIPE INSTITUTE™



DIN 4726

The information contained herein is believed to be reliable, but no representations, guarantees or warranties of any kind are made as to its accuracy, suitability for particular applications or the results to be obtained therefrom. Before using, the user will determine suitability of the information for user's intended use and shall assume all risk and liability in connection therewith. To the extent permitted by law, REHAU EXPRESSLY DISCLAIMS ALL IMPLIED WARRANTIES, INCLUDING BUT NOT LIMITED TO, ANY IMPLIED WARRANTIES OF MERCHANTABILITY OR OF FITNESS FOR A PARTICULAR PURPOSE.

© REHAU Incorporated 2007 Printed in Canada