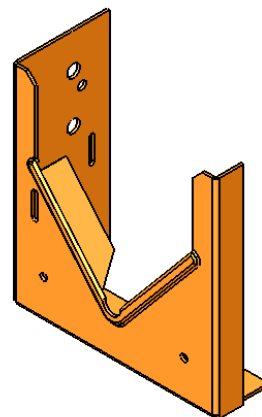
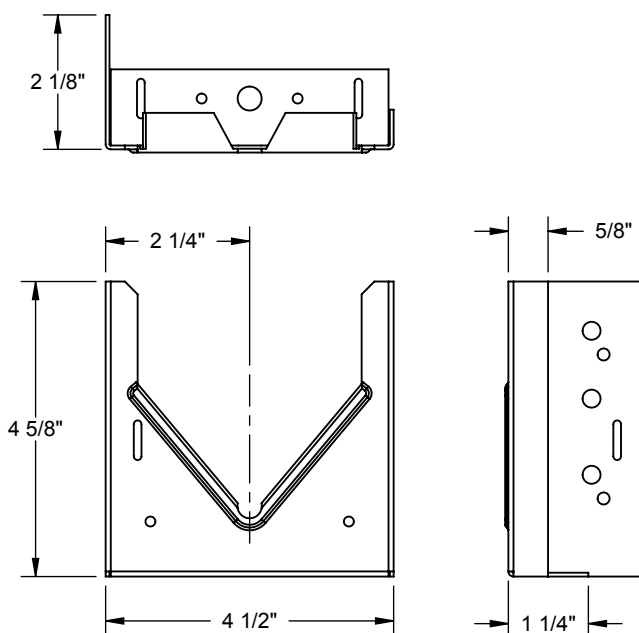


# PRODUCT SPECIFICATION DRAWING

## HOLDRITE® #V-2

Supports copper water piping off the building's structure or other piping



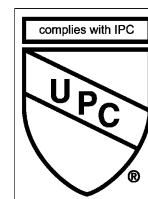
5" Stainless Steel Band

ALL DIMENSIONS IN INCHES

The HOLDRITE® #V-2 is a Copper-Bonded™ steel bracket designed to saddle horizontal water headers, with a load rating of 250 pounds, in tubing sizes ranging from 1/2" through 3". The #V-2 comes pre-assembled with isolating felt and a 5" self-locking stainless steel band attached. Ideal for pre-fab installations. Simply attach the #V-2 to adjacent surface or piping and position the horizontal water header. Solder the tubing to the #V-2 bracket. Heat the pipe, not the bracket.

### Product Information:

- Material: 16 gage CRS, Copper-Bonded™
- UPC / IPC / IAPMO listed



THIS INFORMATION IS PROPRIETARY TO HUBBARD ENTERPRISES AND IS SUBJECT TO CHANGE WITHOUT NOTICE. ANY REPRODUCTION IN PART OR WHOLE WITHOUT THE WRITTEN PERMISSION OF HUBBARD ENTERPRISES IS PROHIBITED.

••••HUBBARD ENTERPRISES••••  
**HOLDRITE®**  
"Converting Makeshift Methods into Engineered Solutions"

Product Submittal	
Job Name:	
Date:	
Part Number:	Qty:
Architect / Owner:	
Contractor:	
Notes:	