



# WELLXTROL®

Next Generation Well Tanks &  
Constant Pressure Systems

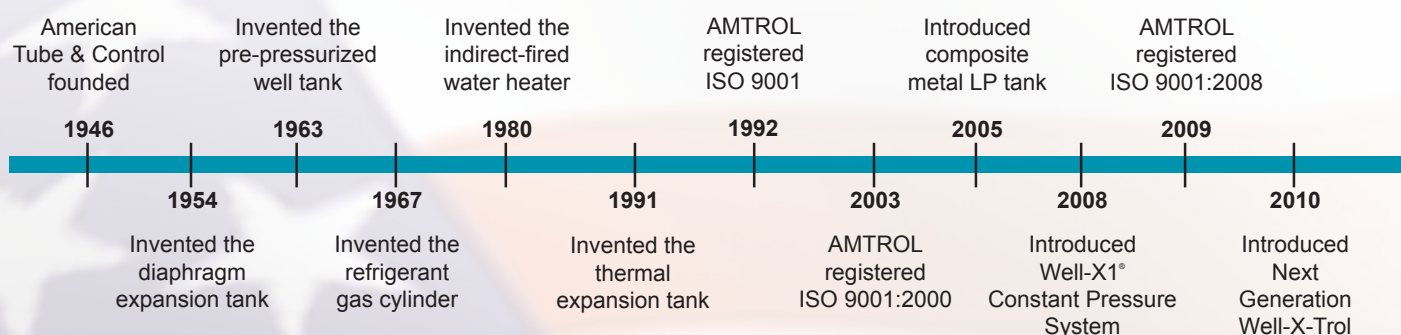


Well Above The Rest®



# WELLXTROL®

AMTROL Inc. has a long tradition of innovative product design, uncompromisingly high quality and outstanding customer service. Well-X-Trol has been the industry's most trusted brand of well tanks for over 45 years. Today, AMTROL is proud to introduce the Next Generation of well tanks featuring higher performance and the industry's only 7 year warranty. All Well-X-Trol tanks are Made in the USA at our ISO 9001:2008 registered facilities. The Best Just Got Better.



# The Best Just Got Better.

## **NEW** The Industry's Longest Warranty: 7 Years

### **Projection Welded Air Valve**

- Eliminates threaded valve leak paths.
- Tamper-evident warning label for added safety.

## **NEW** High Strength Steel (HSS) Construction

- Deep-drawn dome for double the strength of rolled steel.
- Multi-dome construction for internal bracing.

### **Positive Hoop Ring and Groove Seal**

- Secures diaphragm and liner for added strength and reliability.
- Exclusive welding process eliminates interior rough spots and sharp edges that can damage the diaphragm and liner.

### **Seamless Heavy Duty Butyl Diaphragm**

- The Industry's thickest diaphragm for extra strength and flexibility.
- Conforms exactly to the shell without stretching, creasing or forming bubbles that could trap water or sediment.
- Meets stringent FDA requirements for potable water.

### **Polypropylene Tank Liner**

- Provides 100% corrosion resistant, non-metallic water reservoir.
- NSF® International Standard 61 listed for clean, safe water storage with no taste or odor.

### **Stainless Steel System Connection**

- Withstands aggressive water conditions.

## **NEW** Turbulator™ Water Circulation Device

- Patent pending design agitates water as it enters tank.
- Helps reduce sediment build-up and extends tank life.

## **NEW** Best-in-Class 150 psig Pressure Rating

- 20% higher working pressure performance.
- Each tank is pressure tested for added safety.
- Pre-pressurized to the most common pump cut-in pressure.

## **NEW** Tuf-Kote™ Indoor/Outdoor Coating Technology

- Now standard on all models in AMTROL blue, tan or gray.
- Stands up to the most severe environments.

## **NEW** DuraBase™ Composite Tank Stand

- Patent pending design is engineered for strength; allows tank to be rolled into place.
- UV resistant material is rugged and will never corrode.
- DuraBase available separately as spacer for Well-X-Trol models with steel stands.



*Dome*



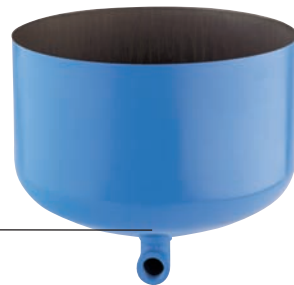
*Hoop*



*Diaphragm*



*Liner*



*Dome*

*Connection*



*Turbulator™*



*DuraBase™  
Composite Stand*



*Tank Base  
Options*

*Steel Stand with  
Protective Edging*



## In-Line Models



| Model No. | Dimensions<br>Diameter (ins) | Height (ins) | Total Volume (gals) | Max. Accept. Factor | System Drawdown |              |              | Shipping Wt. (Vol.) lbs (cu ft) |
|-----------|------------------------------|--------------|---------------------|---------------------|-----------------|--------------|--------------|---------------------------------|
|           |                              |              |                     |                     | 20/40 (gals)    | 30/50 (gals) | 40/60 (gals) |                                 |
| WX-101    | 8                            | 12 5/8       | 2.0                 | 0.45                | .8              | .7           | .6           | 5 (0.6)                         |
| WX-102    | 11                           | 15           | 4.4                 | 0.55                | 1.8             | 1.5          | 1.3          | 9 (1.2)                         |
| WX-103    | 11                           | 22 1/4       | 7.6                 | 0.42                | 3.1             | 2.6          | 2.2          | 15 (1.8)                        |
| WX-104    | 15 3/8                       | 17 3/4       | 10.3                | 1.00                | 4.1             | 3.5          | 3.0          | 20 (2.6)                        |
| WX-200    | 15 3/8                       | 22           | 14.0                | 0.81                | 5.6             | 4.8          | 4.1          | 22 (3.3)                        |

Precharge Pressure for WX-101, WX-102 & WX-103 is 38 PSIG and Sys. Conn. is 3/4" NPTM.  
Precharge Pressure for WX-104 and WX-200 is 38 PSIG and Sys. Conn. is 1" NPTM.  
Maximum Working Pressure is 150 PSIG and Maximum Working Temperature is 200° F.

## Stand Models



| Model No. | Dimensions<br>Diameter (ins) | Height (ins) | Total Volume (gals) | Max. Accept. Factor | System Drawdown |              |              | Shipping Wt. (Vol.) lbs (cu ft) |
|-----------|------------------------------|--------------|---------------------|---------------------|-----------------|--------------|--------------|---------------------------------|
|           |                              |              |                     |                     | 20/40 (gals)    | 30/50 (gals) | 40/60 (gals) |                                 |
| WX-201    | 15 3/8                       | 25 1/8       | 14.0                | 0.81                | 5.6             | 4.8          | 4.1          | 25 (3.8)                        |
| WX-202    | 15 3/8                       | 31 5/8       | 20.0                | 0.57                | 8.0             | 6.8          | 5.9          | 33 (4.9)                        |
| WX-202XL  | 15 3/8                       | 38 1/4       | 26.0                | 0.44                | 10.5            | 8.8          | 7.6          | 36 (5.2)                        |
| WX-203    | 15 3/8                       | 46 1/2       | 32.0                | 0.35                | —               | 10.9         | 9.4          | 43 (7.0)                        |
| WX-205    | 22                           | 29 5/8       | 34.0                | 1.00                | 13.7            | 11.6         | 10.0         | 61 (9.5)                        |
| WX-250    | 22                           | 36           | 44.0                | 0.77                | 17.7            | 15.0         | 12.9         | 69 (11.0)                       |
| WX-251    | 22                           | 46 3/4       | 62.0                | 0.55                | 24.9            | 21.1         | 18.2         | 92 (13.9)                       |
| WX-255    | 22                           | 56 3/8       | 81.0                | 0.41                | 32.6            | 27.5         | 23.8         | 103 (15.8)                      |
| WX-252    | 22                           | 62 1/4       | 86.0                | 0.39                | 34.6            | 29.2         | 25.3         | 114 (18.1)                      |
| WX-302    | 26                           | 47 1/4       | 86.0                | 0.54                | 34.6            | 29.2         | 25.3         | 123 (18.9)                      |
| WX-350    | 26                           | 61 7/8       | 119.0               | 0.39                | 43.6            | 40.5         | 35           | 166 (24.5)                      |

Precharge Pressure for WX-201 thru WX-203 is 38 PSIG and Sys. Conn. is 1" NPTF.  
Precharge Pressure for WX-205 thru WX-350 is 38 PSIG and Sys. Conn. is 1 1/4" NPTF.  
Maximum Working Temperature is 200° F.  
Maximum Working Pressure for all models is 150 PSIG except WX-252.  
Maximum Working Pressure for WX-252 is 100 PSIG.  
All models except WX-201 and WX-252 are available with Pro-Access®.

## Underground Models



| Model No. | Dimensions<br>Diameter (ins) | Height (ins) | Total Volume (gals) | Max. Accept. Factor | System Drawdown |              |              | Shipping Wt. (Vol.) lbs (cu ft) |
|-----------|------------------------------|--------------|---------------------|---------------------|-----------------|--------------|--------------|---------------------------------|
|           |                              |              |                     |                     | 20/40 (gals)    | 30/50 (gals) | 40/60 (gals) |                                 |
| WX-200-UG | 15 3/8                       | 22           | 14.0                | 0.81                | 5.6             | 4.8          | 4.1          | 22 (3.8)                        |
| WX-202-UG | 15 3/8                       | 30           | 20.0                | 0.57                | 8.0             | 6.8          | 5.9          | 30 (4.9)                        |
| WX-250-UG | 22                           | 33 3/8       | 44.0                | 0.77                | 17.7            | 15.0         | 13.0         | 60 (9.8)                        |
| WX-251-UG | 22                           | 44 1/8       | 62.0                | 0.55                | 24.9            | 21.1         | 15.3         | 83 (13.9)                       |

Precharge Pressure for WX-202-UG is 38 PSIG and Sys. Conn. is 1" NPTF Coupling.  
Precharge Pressure for WX-250-UG and WX-251-UG is 38 PSIG and Sys. Conn. is 1 1/4" NPTF Coupling.  
Maximum Working Pressure is 150 PSIG and Maximum Working Temperature is 200° F.

# Model Specifications & Sizing

## Pump Stand Models

| Model No. | Height (ins) | Dimensions Width (ins) | Length (ins) | Total Volume (gals) | Max. Accept. Factor | System Drawdown |              |              | Shipping Wt. (Vol.) lbs (cu ft) |
|-----------|--------------|------------------------|--------------|---------------------|---------------------|-----------------|--------------|--------------|---------------------------------|
|           |              |                        |              |                     |                     | 20/40 (gals)    | 30/50 (gals) | 40/60 (gals) |                                 |
| WX-105-PS | 11           | 10 9/16                | 18 1/4       | 5.3                 | 0.80                | 2.1             | 1.8          | 1.6          | 13 (1.5)                        |
| WX-200-PS | 16           | 15 3/8                 | 20 7/8       | 14.0                | 0.81                | 5.6             | 4.8          | 4.1          | 29 (4.0)                        |
| WX-102-PS | 12 1/2       | 9 1/4                  | 14 1/4       | 4.4                 | 0.55                | 1.8             | 1.5          | 1.3          | 13 (1.4)                        |

Precharge Pressure is 38 PSIG and Sys. Conn. is 3/4" NPTM Fit ing for 102-PS and 105-PS; and 1" NPTF Coupling for 200-PS.

Precharge Pressure for WX-200-PS is 38 PSIG.

Maximum Working Pressure is 150 PSIG and Maximum Working Temperature is 200° F.

WX-102-PS includes Universal Mounting Bracket.



## Horizontal Model

| Model No. | Height (ins) | Dimensions Width (ins) | Length (ins) | Total Volume (gals) | Max. Accept. Factor | System Drawdown |              |              | Shipping Wt. (Vol.) lbs (cu ft) |
|-----------|--------------|------------------------|--------------|---------------------|---------------------|-----------------|--------------|--------------|---------------------------------|
|           |              |                        |              |                     |                     | 20/40 (gals)    | 30/50 (gals) | 40/60 (gals) |                                 |
| WX-202-H  | 28 5/8       | 15 3/8                 | 15 1/4       | 20.0                | 0.57                | 8.0             | 6.8          | 5.9          | 33 (4.9)                        |

Precharge Pressure is 38 PSIG. System connection is 1" NPTF (straight coupling connection).

Maximum Working Pressure is 150 PSIG. Maximum Working Temperature is 200° F.



## Sizing: Choose the amount of system protection you need.

The Effective System Protection (ESP) sizing procedure covers modern residential water-use habits, heavy demands and the general increase in water use that has occurred in recent years. ESP sizing is designed to reduce pump and tank wear and tear, and reduce energy consumption by keeping pump starts to a minimum.

**ESP I:** Tank selection is based on approximately one minute minimum pump running time. This is recommended for pumps up to 3/4 H.P.

**ESP II:** Tank selection is based on approximately two minute minimum pump running time. This is recommended for pumps over 3/4 H.P.

### ESP Sizing Table

| PUMP DISCHARGE RATE GPM (Approx.) | PRESSURE SWITCH OPERATING RANGE - PSIG |          |            |            |            |            |
|-----------------------------------|--|----------|------------|------------|------------|------------|
|                                   | ESP I                                  |          |            | ESP II     |            |            |
|                                   | 20/40                                  | 30/50    | 40/60      | 20/40      | 30/50      | 40/60      |
| 5                                 | WX-202                                 | WX-202   | WX-202     | WX-203     | WX-205     | WX-205     |
| 7                                 | WX-202                                 | WX-202XL | WX-203     | WX-205     | WX-250     | WX-251     |
| 10                                | WX-203                                 | WX-205   | WX-205     | WX-251     | WX-251     | WX-255     |
| 12                                | WX-205                                 | WX-250   | WX-250     | WX-251     | WX-255     | WX-255     |
| 15                                | WX-250                                 | WX-250   | WX-251     | WX-255     | WX-302     | WX-350     |
| 20                                | WX-251                                 | WX-251   | WX-255     | WX-350     | WX-350     | (2) WX-255 |
| 25                                | WX-251                                 | WX-255   | WX-302     | (2) WX-251 | (2) WX-255 | (2) WX-302 |
| 30                                | WX-255                                 | WX-302   | WX-350     | (2) WX-255 | (2) WX-302 | (2) WX-350 |
| 35                                | WX-302                                 | WX-350   | WX-350     | (2) WX-302 | (2) WX-350 | (2) WX-350 |
| 40                                | WX-350                                 | WX-350   | (2) WX-255 | (2) WX-350 | (2) WX-350 | (3) WX-302 |

**Larger Tank = Fewer Tank Cycles for Longer Tank and Pump Life**

## Step up to Constant Pressure

Well-X1 combines the proven reliability of a Well-X-Trol® well tank with the convenience of constant pressure; all at a fraction of the cost of a Variable Frequency Drive (VFD) system. Pre-assembled and ready to run, it's the ultimate in quality, savings and performance.



### Constant Pressure Performance

- The most cost effective system solution.
- Works with existing pump and wiring.
- Easy to install - No special training needed.



### Guardian CP™ Digital Controller

- Protects pump against rapid cycle, low suction, voltage variation and improper wiring.
- Flexible wire leads for easy connection.



### Factory Assembled and Individually Tested

- Ready to run; simply plumb, wire and start.
- Pre-installed control, tank tee, relief valve and drain saves time and installation cost.
- Every unit is pressure tested and digitally verified for uniform reliability.



## Built-In Diagnostics



**E1 RAPID CYCLE** senses short cycling and alerts the user before a water logged tank causes pump damage.

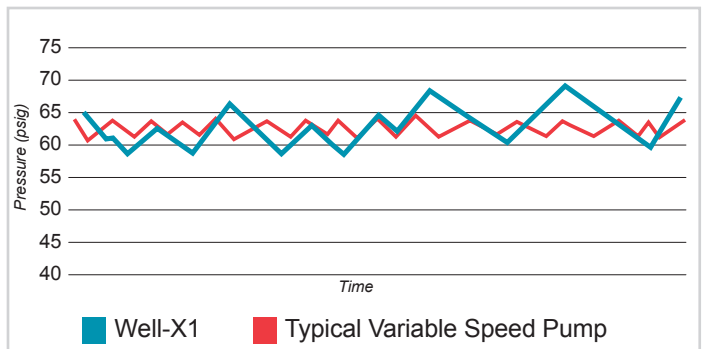


**E2 LOW SUCTION** shuts the pump off if a dry-run situation occurs. The pump restarts every 60 minutes to allow time for a low yield well to recover.



**E3 VOLTAGE PROTECTION** protects motor from improper voltage conditions and restarts automatically when proper voltage is restored.

## Constant Pressure Performance



# Constant Pressure System

## Specifications

| Model   | Volume (Gallons) | Height (Inches) | Diameter (Inches) | Weight (lbs.) | Voltage (VAC) | Max. Pump Horsepower | Relief Valve (Included) | Pressure Range | Differential Range |
|---------|------------------|-----------------|-------------------|---------------|---------------|----------------------|-------------------------|----------------|--------------------|
| WX1-202 | 20               | 40 1/4          | 15 3/8            | 44            | 115/230       | 2                    | 100 psig                | 10-80 psig     | 10-55 psig         |
| WX1-203 | 32               | 54 1/2          | 15 3/8            | 54            | 115/230       | 2                    | 100 psig                | 10-80 psig     | 10-55 psig         |
| WX1-250 | 44               | 44              | 22                | 80            | 115/230       | 2                    | 100 psig                | 10-80 psig     | 10-55 psig         |
| WX1-251 | 62               | 54 3/4          | 22                | 103           | 115/230       | 2                    | 100 psig                | 10-80 psig     | 10-55 psig         |
| WX1-302 | 86               | 55 1/4          | 26                | 134           | 115/230       | 2                    | 100 psig                | 10-80 psig     | 10-55 psig         |

All models: Water Connections 1" NPTF and 1-1/4" NPTM

## System Drawdown (Gallons)

| MODEL   | STANDARD DIFFERENTIAL                   |       |       |       | CONSTANT PRESSURE MODE                  |       |       |       |
|---------|---|-------|-------|-------|---|-------|-------|-------|
|         | Pressure Range (cut-in/cut-out in psig) |       |       |       | Pressure Range (cut-in/cut-out in psig) |       |       |       |
|         | 30/50                                   | 40/60 | 50/70 | 60/80 | 40/50                                   | 50/60 | 60/70 | 70/80 |
| WX1-202 | 6.8                                     | 5.9   | 5.2   | 4.6   | 3.8                                     | 3.2   | 2.8   | 2.6   |
| WX1-203 | 10.9                                    | 9.4   | 8.3   | 7.4   | 6.1                                     | 5.1   | 4.5   | 4.2   |
| WX1-250 | 15.0                                    | 13.0  | 11.4  | 10.1  | 8.4                                     | 7.0   | 6.2   | 5.7   |
| WX1-251 | 21.1                                    | 18.3  | 16.1  | 14.4  | 11.8                                    | 9.9   | 8.7   | 8.1   |
| WX1-302 | 29.2                                    | 25.4  | 22.4  | 20.0  | 16.3                                    | 13.8  | 12.0  | 11.2  |

## WELL-X1® Sizing (Select Your Well-X1 Application)

| TRADITIONAL SUBMERSIBLE PUMP INSTALLATION  |    |         |         |         |   |          |   |         |         | JET PUMP SYSTEMS  |         |          |  |         |         |         |         |  |  |  |  |  |  |
|--|----|---------|---------|---------|---|----------|---|---------|---------|---|---------|----------|--|---------|---------|---------|---------|--|--|--|--|--|--|
| Traditional System<br>20 psig differential |    |         |         |         | Constant Pressure for Submersible Pumps<br>10 psig differential |          |   |         |         | Constant Pressure for Jet Pumps<br>10 psig differential |         |          |  |         |         |         |         |  |  |  |  |  |  |
| 30/50      40/60      50/70      60/80     |    |         |         |         | 40/50      50/60      60/70      70/80                          |          |   |         |         | 20/30      30/40      40/50      50/60                  |         |          |  |         |         |         |         |  |  |  |  |  |  |
| Pressure Range (cut-in/cut-out)            |    |         |         |         | Pressure Range (cut-in/cut-out)                                 |          |   |         |         | Pressure Range (cut-in/cut-out)                         |         |          |  |         |         |         |         |  |  |  |  |  |  |
| PUMP GPM                                   | 4  | WX1-202 | WX1-202 | WX1-202 | WX1-202   | PUMP GPM | 5   | -       | -       | WX1-250   | WX1-250 | PUMP GPM | 4  | WX1-202 | WX1-202 | WX1-203 | WX1-203 |  |  |  |  |  |  |
|  | 5  | WX1-202 | WX1-202 | WX1-202 | WX1-203   |          | 7   | WX1-250 | WX1-250 | WX1-251   | WX1-251 |          | 5  | WX1-202 | WX1-203 | WX1-203 | WX1-250 |  |  |  |  |  |  |
|  | 7  | WX1-203 | WX1-203 | WX1-203 | WX1-203   |          | 10  | WX1-251 | WX1-251 | WX1-302   | WX1-302 |          | 6  | WX1-203 | WX1-203 | WX1-250 | WX1-250 |  |  |  |  |  |  |
|  | 10 | WX1-203 | WX1-250 | WX1-250 | WX1-250   |          | 12  | WX1-251 | WX1-302 | WX1-302   | WX1-302 |          | Jet pumps can now provide city-like water pressure. Choose a Well-X1 from this table to create a constant pressure system with a jet pump! |         |         |         |         |  |  |  |  |  |  |
|  | 12 | WX1-250 | WX1-250 | WX1-251 | WX1-251   |          | 15  | WX1-302 | WX1-302 | -   | -       |          |  |         |         |         |         |  |  |  |  |  |  |
|  | 15 | WX1-251 | WX1-251 | WX1-251 | WX1-302   |          | Select a Well-X1 from this chart to take advantage of the 10 psig differential and create a constant pressure system with a submersible pump. |         |         |   |         |          |  |         |         |         |         |  |  |  |  |  |  |
|  | 18 | WX1-251 | WX1-302 | WX1-302 | WX1-302   |          |   |         |         |   |         |          |  |         |         |         |         |  |  |  |  |  |  |
|  | 20 | WX1-251 | WX1-302 | WX1-302 |   |          |   |         |         |   |         |          |  |         |         |         |         |  |  |  |  |  |  |

Well-X1 sizing based on model availability.



# Well Above The Rest®

Not all well tanks are created equal. Watch as plumbing expert, Richard Trethewey explains the very real differences that make Well-X-Trol *Well Above the Rest*®.

All models are Well-X-Rewards™ eligible. Visit [www.well-x-rewards.com](http://www.well-x-rewards.com)



*AMTROL Tanks on Tour™ educational vehicle.*

**AMTROL Headquarters**  
1400 Division Road  
West Warwick, RI USA 02893  
Telephone: 401.884.6300



**AMTROL Canada, Ltd.**  
275 Shoemaker Street  
Kitchener, Ontario N2E 3B3  
Telephone: 519.748.1138