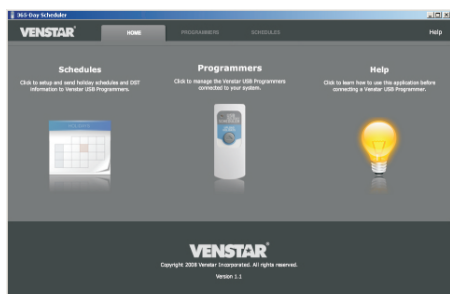


Be sure to have the 365-Day Scheduler application installed on your computer before proceeding. Follow the installation instructions below if you have not already installed the program.

Installation: Insert the bundled Mini CD into your computer to begin installation. On computers running the Windows operating system, a welcome window will appear with an option to begin the installation process. If your system is set to disallow CD auto-run you will not see the welcome window and you must launch the installer manually by browsing the CD contents in "My Computer".

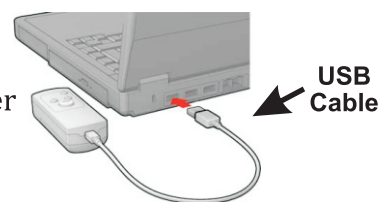
Follow all instructions given by the installer and complete the program installation.

1. Launch the installed program:



2. Connect the USB Programmer to one of your computer's USB ports using the included USB cable as shown here:

The program should automatically recognize your connected programmer and list it under the "Programmers" tab.



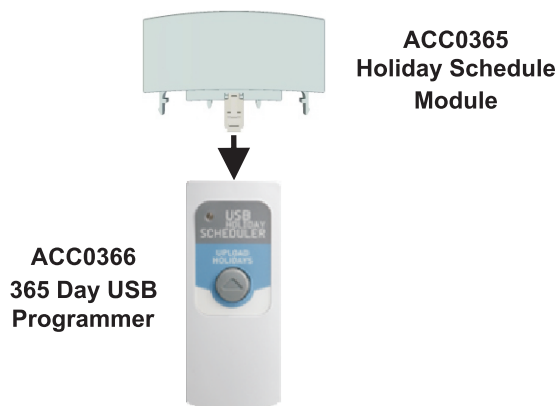
Important: The two supplied AA batteries must be installed in the USB Programmer for proper operation.

3. Program a holiday schedule:

Click on the "Schedules" tab to setup and send holiday schedules to the USB Programmer. (Follow instructions in the 365-Day Scheduler application for programming help.)

4. Uploading a holiday schedule to the Holiday Schedule Module:

(A) After the schedule has been sent and the USB Programmer is safely ejected, connect the Holiday Schedule Module to the USB Programmer as shown:



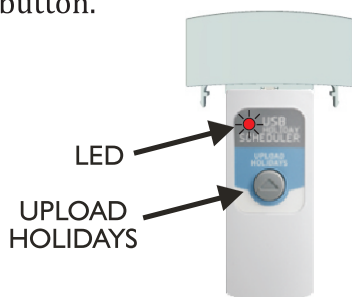
(B) Once connected, the USB Programmer LED will flash **green** 5 times. A **red** flash indicates an error has occurred. Try reconnecting the module.



(Over ➡)

4. Uploading a holiday schedule to the Holiday Schedule Module (cont):

- (C) Next, press the **UPLOAD HOLIDAYS** button on the USB Programmer. The LED on the USB Programmer will turn solid red during programming, then flash **green** 5 times to indicate programming is complete. If it flashes red an error has occurred. Try reconnecting the Module before again pressing the **UPLOAD HOLIDAYS** button.



- (D) It is now safe to disconnect the module from the USB Programmer.



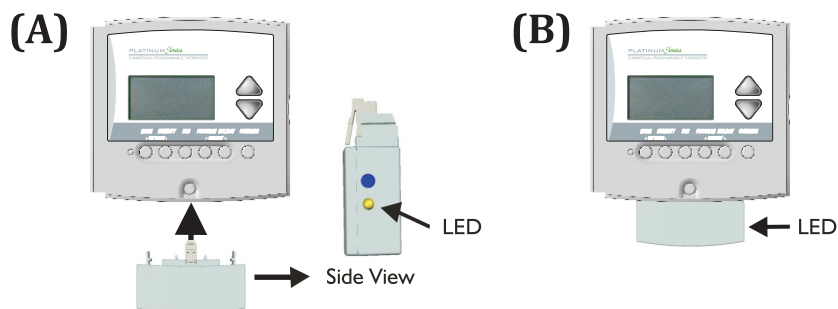
5. Connect the Holiday Schedule Module to the Thermostat as shown below:

**The Holiday Schedule Module is compatible only with the T2900 Commercial Thermostat.*

To Connect the Holiday Schedule Module

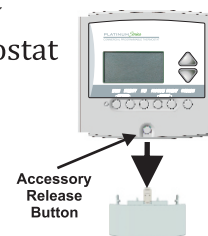
Insert the Holiday Schedule Module plug into the accessory jack of the thermostat. The Holiday Schedule Module has two tabs that fit into the ventilation slots of the thermostat for added stability. The LED on the module will flash 5 times when successfully connected. The holiday schedule will take effect at 12:00am of the next day.

In order for the holiday schedule to take effect the thermostat must be in the PROGRAM ON mode.



To Remove the Holiday Schedule Module

Press and hold the accessory release button on the thermostat while removing the Holiday Schedule Module from the thermostat's accessory jack.



Error Codes

When programming Module:

2 Flashes RED on Programmer = Clock has been lost
Remedy: Resend the schedule to the Programmer.

4 Flashes RED on Programmer = Communication error
Remedy: Reconnect the Module to the programmer.

When connecting Module to thermostat:

2 Flashes RED on Module = Module not programmed
Remedy: Use the Programmer to program the Module.

Solid RED on Module = Non-Compatible Thermostat
Remedy: Connect Module to a T2900 thermostat.

6. Re-synchronizing the Holiday Schedule Module clock:

The Holiday Schedule Module is equipped with it's own clock that sends periodic updates to the thermostat. If the time displayed on the thermostat is inaccurate, the module clock may need to be reset. To re-synchronize the clock in the module, set the correct time on the thermostat and press the Clock Reset button on the module for up to 5 seconds. The LED on the module will flash when the clock has been reset.

