

Product information presented here reflects conditions at time of publication. Consult factory regarding discrepancies or inconsistencies.

visit our web site:
www.zoeller.com

Notice to Installer: Instructions must remain with installation.

“A-PAK” ALARM SYSTEM INSTALLATION INSTRUCTIONS

Installer must provide proper length of *two conductor wires which connects the control switch to the alarm panel and parts necessary to make cable splice. (*When used underground, wire must be approved for underground use. For example: 14-2 type UF). Wire size 16-22 AWG.

FOR YOUR PROTECTION ALWAYS DISCONNECT FROM POWER SOURCE BEFORE HANDLING. The “A-Pak” unit is supplied with a 3-prong grounded plug to help protect you against the possibility of electrical shock. **DO NOT UNDER ANY CIRCUMSTANCES REMOVE THE GROUND PIN.** The 3-prong plug must be inserted into a mating 3-prong grounded receptacle. If the installation does not have such a receptacle, it must be changed to the proper type, wired and grounded in accordance with the National Electrical Code and all applicable local codes and ordinances. The “A-Pak” has a double insulated plastic enclosure for your protection.

SPECIFICATIONS

This alarm system monitors liquid levels in lift pump chambers, sump pump basins, holding tanks, sewage, agricultural and other non-potable water applications. It features a red warning light, green “power on” light, alarm test switch and horn silence switch. “A-Pak” primary voltage is 120 VAC, 60 Hz, 2.4 watts max (alarm condition) (circuit is not supervised). Secondary voltage is 9 VDC (circuit is not supervised). Battery backup power is 9 VDC.

NOTE: The alarm panel plugs into a standard household 120 VAC socket. **DO NOT** plug “A-Pak” Alarm System into the same circuit as the pump. The “A-Pak” Alarm System should be connected to a circuit separate from the pump circuit. Push test button to check alarm panel for operation.

ALARM PANEL INSTALLATION

- 1) Mount the alarm panel indoors with screws provided. **NOTE:** The mounting screw is to be located over a wall stud or used with a wall anchor sized for a #8 x 1.25 self tapping screw.
- 2) Hang the panel by the keyhole in the back of the alarm enclosure and install the second screw between the tabs located on bottom of the enclosure.
- 3) Using the provided cable clamp, secure the power cord to the outlet as shown (see Figure B). Use existing receptacle faceplate screw and supplied washer.

CONTROL SWITCH MOUNTING CLAMP INSTALLATION

- 1) Place cord into clamp and secure to discharge pipe as shown in clamp detail (see Figure E). **NOTE:** Do not install the cord under the hose clamp.
- 2) Tighten the hose clamp with a screwdriver. **NOTE:** Do not over tighten; over tightening may cause damage to the plastic clamp.
- 3) Make sure the float cable is not allowed to touch the excess hose clamp band during operation.

NOTE: All hose clamp components are made of 18-8 stainless steel. See your local supplier for replacements.

CONTROL SWITCH INSTALLATION

- 1) The control switch must be suspended seven inches below the desired alarm level (see Figure D). **NOTE:** When installing the control switch, a cable strain relief must be used to secure the control switch cord on entry into tank.
- 2) Connect the two conductors from the control switch to either of the terminations on the bottom of the alarm panel (see Figure A). The control switch operates on low voltage and is isolated from the 120 VAC power line to reduce shock hazards.

TEST

Check and test your installation by tipping the float manually. The alarm panel should indicate an alarm condition. The Zoeller Company cannot be responsible for damages caused by the faulty or negligent installation of this device. We respectfully suggest you engage the services of a qualified licensed electrician or service person. Push Test button once per week to verify proper operation.

LIFT PUMP HIGH LEVEL FLOAT APPLICATION

Suspend control switch above pump turn-on level. If a pump failure causes a high level condition, the “A-Pak” Alarm System will activate (see Figure C).

SEWAGE HOLDING TANK HIGH LEVEL FLOAT APPLICATION

Suspend control switch into tank seven inches below desired alarm level. “A-Pak” Alarm System will activate if float ascends to alarm level (see Figure D).

▲ WARNING All electrical systems must be installed by a qualified licensed electrician according to the National Electrical Code.

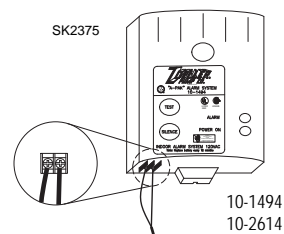


Figure A

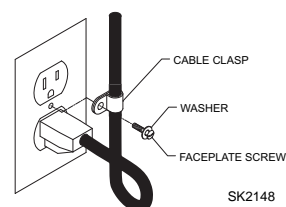


Figure B

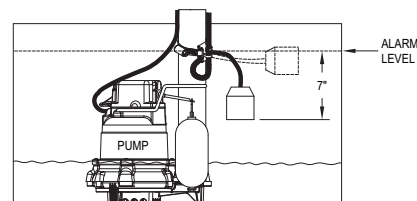


Figure C

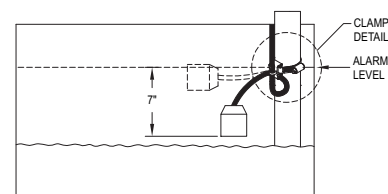


Figure D

CLAMP DETAIL (Tether Length non-adjustable)

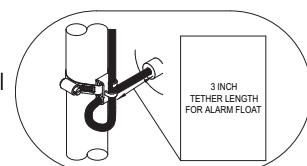


Figure E

WARNING: All wiring shall be installed in accordance with the National Electrical Code (NEC) and all other applicable codes.

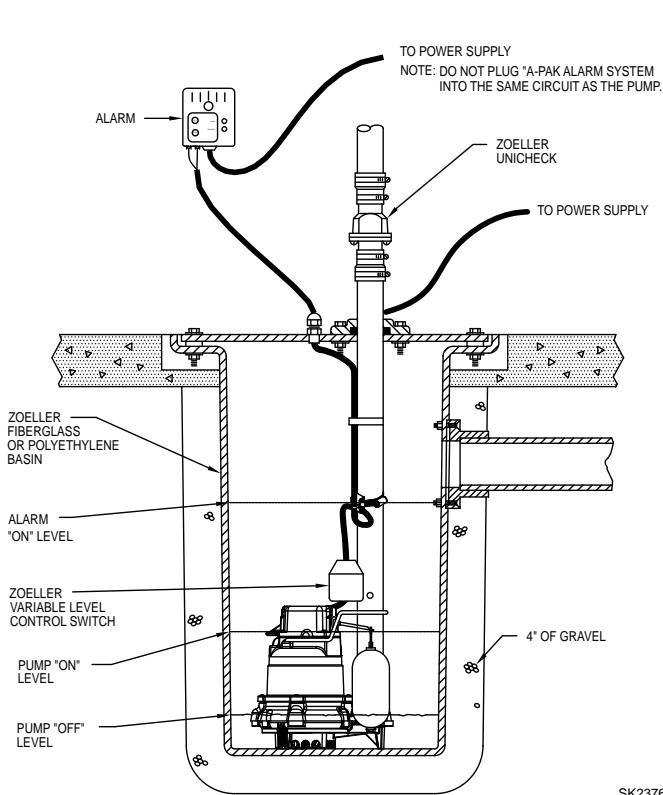
TYPICAL INSTALLATION AND WIRING INSTRUCTIONS FOR "A-PAK" (115V OR 230V)

NOTICE: * P/N 10-0015 "A-Pak" 115V/1Ph and P/N 10-0016 "A-Pak" 230V/1Ph includes bell and transformer. Utility box, cordage and float switch must be purchased separately.

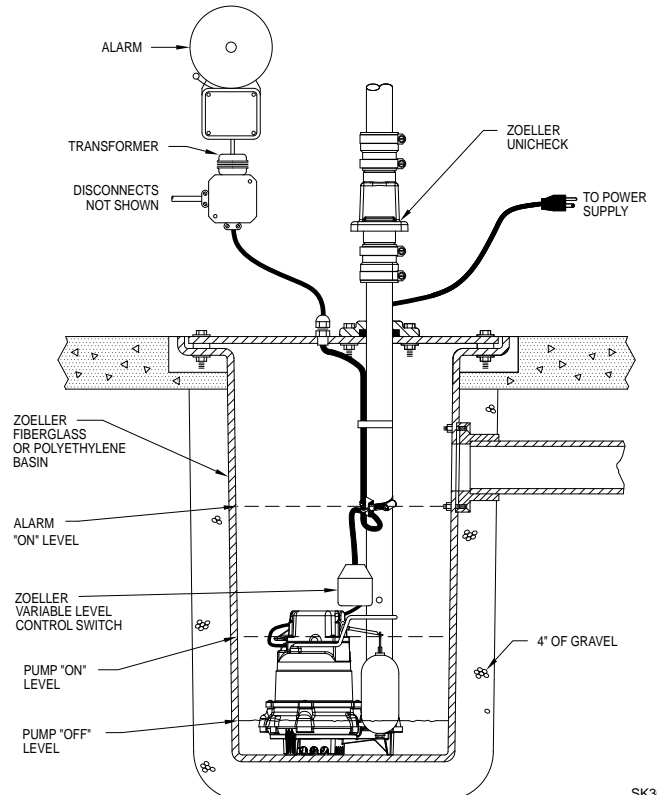
NOTICE: * P/N 10-0028 Residential "A-Pak" 115V/1Ph includes bell, transformer and float switch. Utility box and cordage must be purchased separately.

NOTICE: P/N 10-1494 and 10-2614 "A-Pak" Alarm Systems 120V/1Ph includes all components. (See other side).

*TYPICAL SIMPLEX SYSTEMS WITH A-PAK - ALARM SYSTEM



SK2376



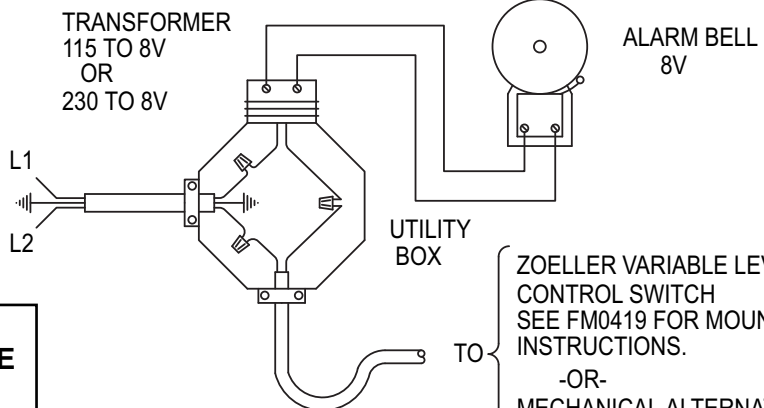
SK367

WIRING DIAGRAM

(10-0015)
(10-0016)
(10-0028)

DISCONNECT
NOT SHOWN

POWER
SUPPLY



NOTE:
**ALARM SYSTEM SHOULD BE
ON A SEPARATE CIRCUIT
FROM PUMPS.**

ZOELLER VARIABLE LEVEL
CONTROL SWITCH
SEE FM0419 FOR MOUNTING
INSTRUCTIONS.
-OR-
MECHANICAL ALTERNATOR
(10-0075) WITH ALARM
CONTACTS.

SK313