

ULTRA-ZONE™

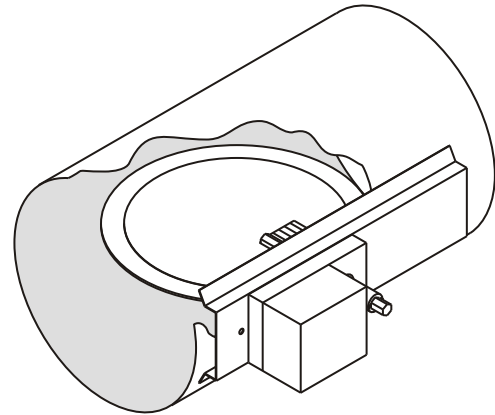
Forced Air Zone Controls

SUBMITTAL SHEET

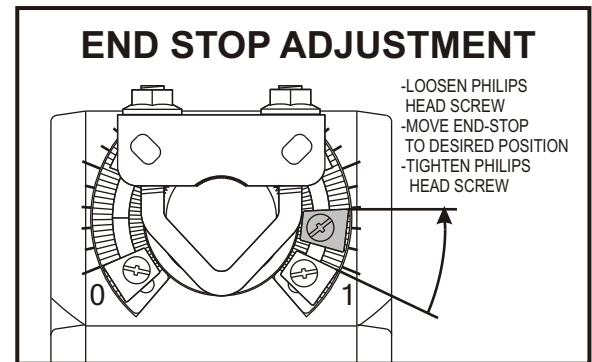
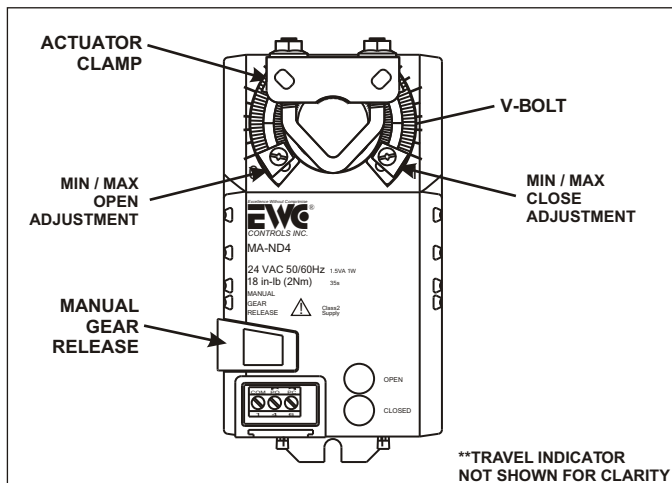
Model SID -- Retro-fit Damper
w/ MA-ND4 Motor Actuator

MODEL SID Series Dampers

The SID Series of round motorized dampers are designed for the Retro-Fit market. The SID damper easily slips into a 1 1/4" slot cut into the existing round duct. The damper has a double layered blade design with an integrated cellular foam sealing gasket. The superior design insures long life and no maintenance. SID dampers are easy to install, easy to wire, and come with a 5 year warranty. It is designed to operate at static pressures up to 1" w.c. @ < 5% leakage. The UL Listed Motor Actuator is a 24vac 3 wire power open / power close type rated at 18" in lbs. of torque. It includes an integrated terminal block, and NEMA1 rated housing. The motor also includes End-Stops for Min/Max position capability to allow adjustment of the design CFM flow into a particular zone or area. A travel Indicator and OPEN/CLOSE LED's are included that provide visual indication of damper position. The damper can be installed to orient motor at any angle.



MODEL #	ROUND DUCT SIZE	MODEL #	ROUND DUCT SIZE
SID - 4	4.00"	SID - 8	8.00"
SID - 5	5.00"	SID - 9	9.00"
SID - 6	6.00"	SID - 10	10.00"
SID - 7	7.00"		



INSTALLATION INSTRUCTIONS

1. Determine the installation location in desired round pipe.
2. Apply the Template to the desired location. (It is NOT recommended to install the damper on the bottom of the duct.)
3. Drill a pilot hole in the center of the template.
4. Cut along the Template to the size of the round duct that the damper is being installed in.
5. Make sure damper blade is Parallel with the mounting bracket (Inline with -- above graphic). Use the manual gear release if it is not Parallel.
6. Slip damper into slot in the round duct. Position bracket so it is level with the duct. Secure to the duct with the sheet metal screws provided.
7. Wire the damper, use the diagrams on the back of this sheet.

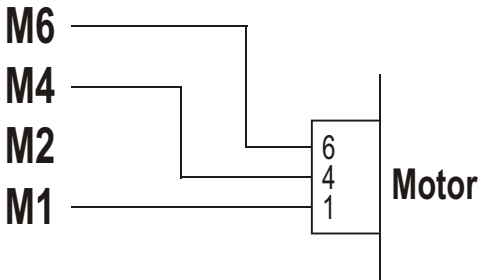


385 Hwy. 33 Englishtown, NJ 07726
Ph: 800-446-3110 - Fx: 732-446-5362

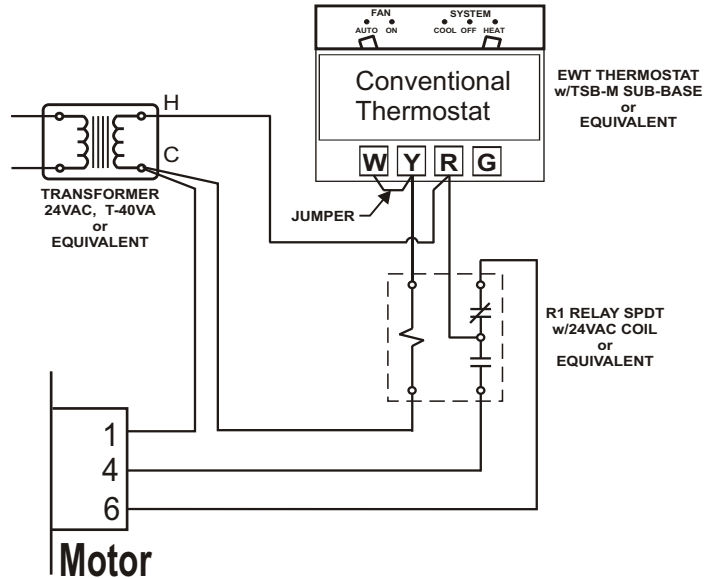
WIRING SOLUTIONS

ZONE CONTROL PANEL
MOTOR Terminal Output
M6 - power to close
M4 - power to open
M2 - constant power
M1 - common

Wiring to a Control Panel



Wiring a Thermostat to Control a Single Damper



Wiring in Parallel

