

Braeburn®

Model 2200

Multi-Stage 2 Heat / 1 Cool

Conventional or Heat Pump Thermostat

Builder Series 5-2 Day Programmable



Features

- Dual Powered—Hardwired or Battery
- 5-2 Day Separate Weekday / Weekend Programming
- Large Display with Bright Blue Backlight
- Non-Volatile Memory to Retains User Settings
- Filter Check Monitor
- Adaptive Recovery Mode (ARM™)
- Adjustable 1st and 2nd Stage Temperature Differential
- ESD Guard™ Electronic Circuitry
- Compressor Short Cycle Protection
- Separate Heating and Cooling Set Point Program Times and Temperatures
- Temporary Program Override for 4 Hours or Until Next Set Point
- Programmable Extended Hold Mode
- Front Access Reset Button
- F° / C° Switch
- Auxiliary Heat Status Indicator
- Mount to Horizontal Box
- Three Level Low Battery Indication
- Easy Access Front Battery Door
- Separate O & B Terminals
- Meets ENERGY STAR® and California Title 24 Guidelines

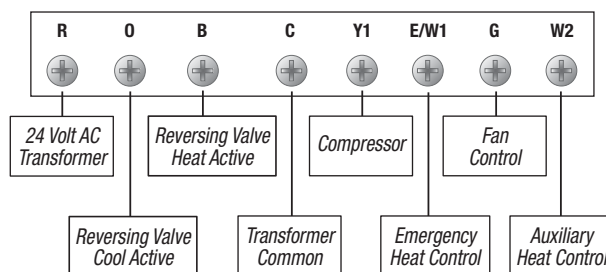
The
brighter
choice®



Builder Series

FREE Contractor Branding! Visit www.braeburnonline.com

Model 2200 Terminal Designations



Architectural Specifications

The digital programmable thermostat shall be a Braeburn®, model number 2200, 3.75" high x 4.94" wide x 1.19" deep, powered independently with either 24 Volt AC or with two "AA" alkaline batteries (3.0 Volt DC). The thermostat shall be compatible with multi-stage conventional or heat pump systems with up to two stages of heating and one stage of cooling. The thermostat shall have a bright blue backlight display, front loading battery door and separate sub-base for trouble free installation. Temperature control range shall be between 45° and 90° F (7° and 32° C), accuracy of +/- 1° F (+/- .5° C), humidity range between 5% and 95% relative humidity. The thermostat shall include non-volatile memory to retain user settings, filter check monitor, adaptive recovery mode (ARM™), separate heating and cooling set point program times and temperatures, and auxiliary heat indicator. Thermostat shall have three level low battery indication and a front reset button will return user settings to default values when pressed. The thermostat can be mounted to a horizontal junction box.

Product Specifications

Dimensions:	3.75" x 4.94" x 1.19"
Electric Rating:	24 Volt AC (18-30 Volt AC) 1 amp maximum load per terminal 3 amp total maximum load (all terminals)
AC Power:	18-30 Volt AC
DC Power:	3.0 Volts DC (2 "AA" Alkaline batteries included)
Compatibility:	Multi-stage conventional or heat pump systems with up to two stages of heating and one stage of cooling
Control Range:	45° to 90° F (7° to 32° C)
Display Range:	40° to 99° F (4° to 37° C)
Accuracy:	+/- 1° F (+/- .5° C)
Temperature Differential:	1st Stage - .5°, 1°, or 2° F (.25°, .5°, or 1° C) 2nd Stage - 2°, 3°, 4°, 5°, or 6° F (1°, 1.5°, 2°, 2.5°, or 3° C)
Storage Temperature:	14° to 140° F (-10° to 60° C)
Operating Humidity:	5% to 95% Relative Humidity
Terminations:	R, O, B, C, Y1, E/W1, G, W2

Shipping Information

INDIVIDUAL CARTON	MASTER CARTON
Dimensions: 4.33" x 5.63" x 1.86"	Quantity: 6
Weight: .58 lbs.	Dimensions: 5.94" x 11.81" x 4.80"
	Cubic Feet: .19
	Weight: 3.7 lbs.

Braeburn 2200 Replaces

Honeywell®	TH2210*, TH4210, T8011*, T8024
White-Rodgers®	1F72-151*, 1F73-174*
Robertshaw®	RS3210*, 8625*, 8625-1*, 9615*, 9620*
ICM®	SC3201*
LuxPro®	PSPH521L*

*Verify specific multi-stage heat pump application requirements.
All trademarks are the property of their respective owners.

Accessories

2950	Universal Wall Plate (6.5" x 6.5" x .125")
5970	Universal Thermostat Guard

FREE Contractor Branding Available!

Visit our website (www.braeburnonline.com) for more information, contact your local distributor or call our sales department toll-free at 866.268.5599 (U.S.), +1.630.844.1968 (Outside the U.S.).

Date: _____
Job Name: _____
Location: _____
Contractor: _____

Engineer: _____
Model No.: _____
Submitted By: _____
Submitted For Approval: _____ **Record:** _____