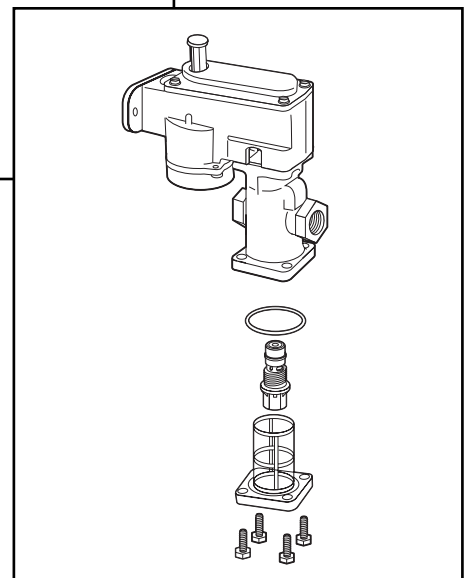
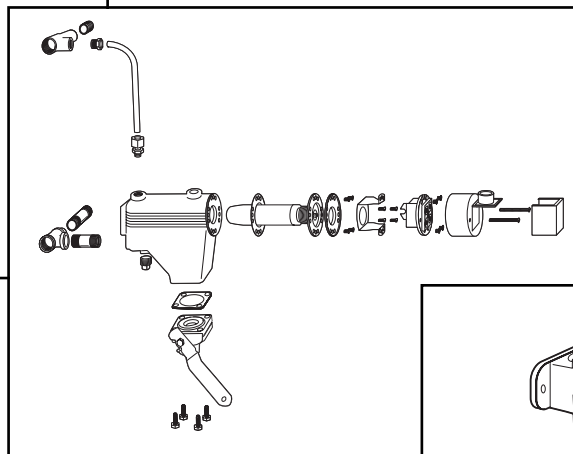
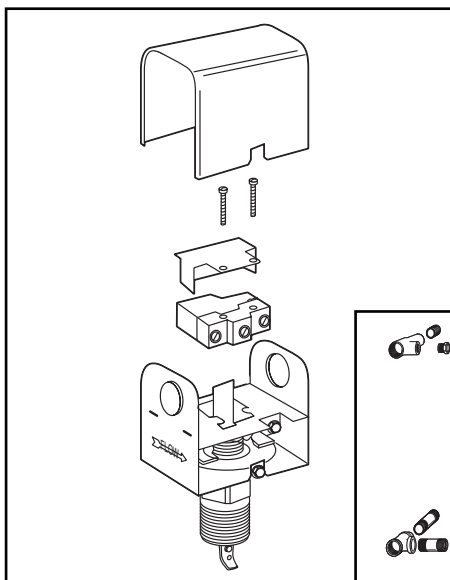




ITT

MM-718

# McDonnell & Miller Residential Replacement Parts



*Engineered for life*

ITT McDonnell & Miller – the industry leader. Delivering reliable performance and safety in boiler and level control products for over 80 years.

Whether it's ease of serviceability, continuous improvement, product enhancements or interchangeability, ITT McDonnell & Miller is continually doing more to give you the best performing residential, commercial and industrial liquid level and flow control products found anywhere.

## **BOILER CONTROLS FLOW SWITCHES LIQUID LEVEL CONTROLS**

**ITT McDONNELL & MILLER IS AN  
INTERNATIONALLY CERTIFIED  
ISO 9001**












ITT McDonnell & Miller is the recipient of the highly coveted "ISO 9001 certification. Recognized by more than 50 countries, this worldwide standard provides a uniform measure of quality procedures in manufacturing and service organizations.

Participation in the rigid and demanding ISO 9001 certification process is one of our most important activities. Our customers – both in the United States and abroad – should know that we are dedicated to designing, producing and marketing the very highest quality products available anywhere.





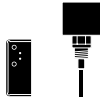




The ITT McDonnell & Miller web site provides 24-hour a day access to information on our products and services. Bookmark it and visit regularly to learn about new products, download installation instructions and service bulletins, order literature, find your nearest representative, or send us an e-mail.

**VISIT OUR WEB SITE  
[www.mcdonnellmiller.com](http://www.mcdonnellmiller.com)**

## FLOW SWITCH PRODUCTS

<u>LIQUID FLOW</u>	<u>FOR SERIES</u>	<u>PAGE</u>
• <i>General Purpose</i>	FS4-3 	4
	FS5 	5
	FS8-W 	6
	FS251 	7
	FS254 	7
• <i>High Sensitivity</i>	FS1 	8
	FS1-W 	8
	FS6 	9
	FS6-W 	9

## BOILER CONTROL REPLACEMENT PARTS

<u>LOW WATER CUT-OFFS</u>	<u>SERIES</u>	<u>PAGE</u>
• <i>For Hot Water Boilers</i> Replacement Probes		
	PS-850 Series 	10
	RB Series 	11
	750 Series 	11
• <i>For Steam Boilers</i>		
	67 	12
<b><u>WATER FEEDERS</u></b>		
• <i>Electric</i>		
	Uni-Match® WF2 	14
	101-A 	15
• <i>Mechanical</i>		
	47/47-2 	16

## GENERAL INFORMATION

### *Maintenance & Replacement*

Interval Guidelines .....	18
---------------------------	----



## Flow Switches – Liquid

### Series FS4-3

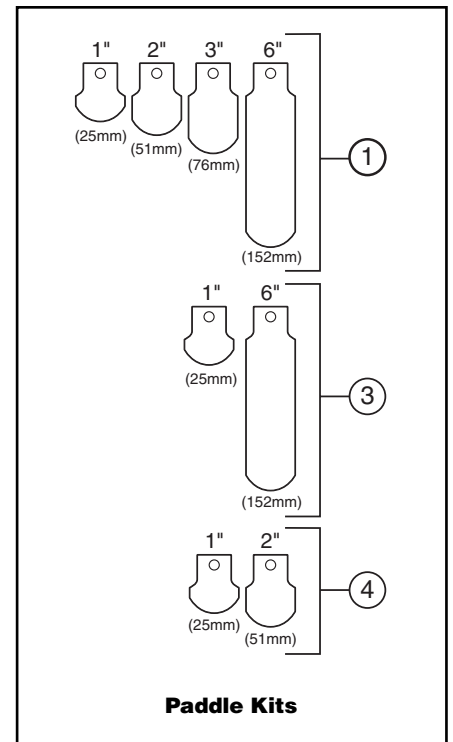
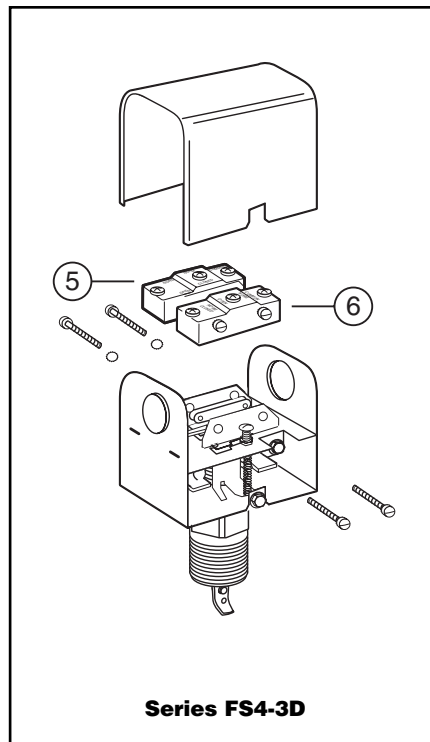
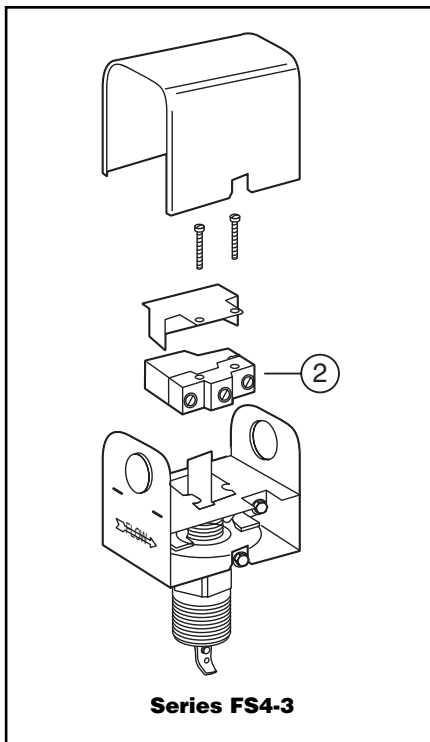
#### General Purpose Liquid Flow Switches

#### Components

For Model	Item Number	Part Number	Model Number	Description	Weight lbs. (kg)
All models (except those below)					
	1	310451	FS4-15SS	Stainless steel paddle kit	0.1 (.05)
	2	305200	FS4-33	SPDT switch	0.3 (.14)
FS4-3RP	3	336101	FS4-15RP	Stainless Steel paddle kit	0.1 (.04)
FS4-3F	4	336801	FS4-15F	Paddle kit	0.1 (.05)
FS4-3D	5	305512	FS4-3D-17	SPDT switch	0.3 (.14)
	6	304300	FS1-17	SPDT switch (next to adjustment screw)	0.3 (.14)



Note: Paddle kits include screws and washers.





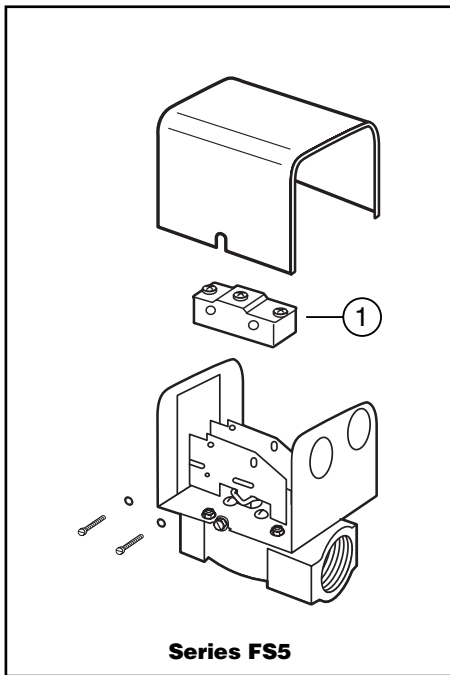
## Flow Switches – Liquid

### Series FS5

#### General Purpose Liquid Flow Switches

#### Components

Item Number	Part Number	Model Number	Description	Weight lbs. (kg)
1	304300	FS1-17	Switch	0.3 (.14)





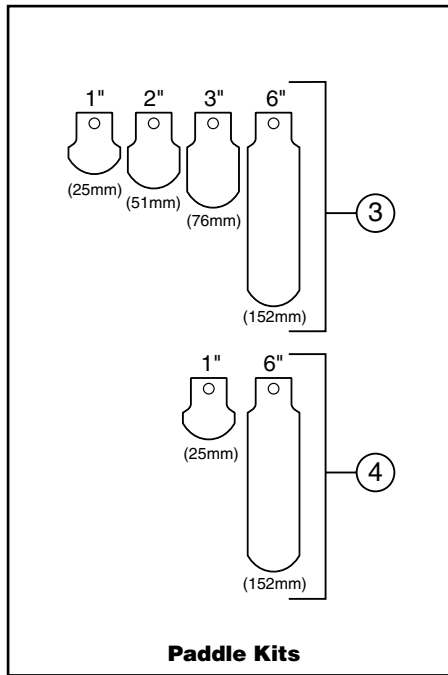
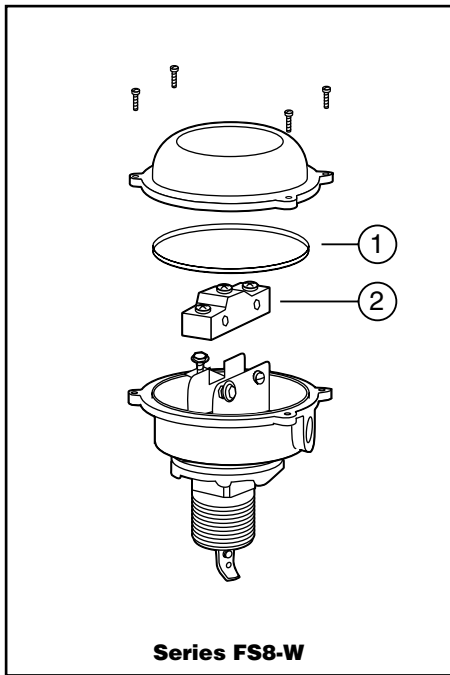
## Series FS8-W General Purpose Liquid Flow Switches

### Components

Item Number	Part Number	Model Number	Description	Weight lbs. (kg)
1	307400	GSKT-FS8W	O-ring	0.1 (.05)
2	310478	FS8-33	Switch	0.3 (.14)
3	310451	FS4-15SS	Stainless steel paddle kit	0.1 (.05)
4	336101	FS4-15RP	Stainless steel paddle kit	.08 (0.4)



Note: Paddle kits include screws and washers.





## Series FS250 General Purpose Liquid Flow Switches

### Components

Item Number	Part Number	Model Number	Description	Weight lbs. (kg)
1	310801	GSKT-FS254	O-ring	0.1 (0.05)
2	310802	SW-FS250	Switch	0.3 (0.1)
3	310451	FS4-15SS	Stainless steel paddle kit	0.1 (0.05)
4	336101	FS4-15RP	Stainless steel paddle kit	.08 (0.4)

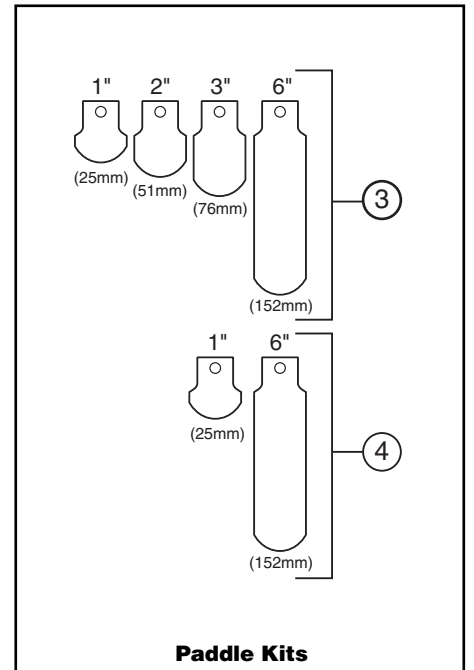
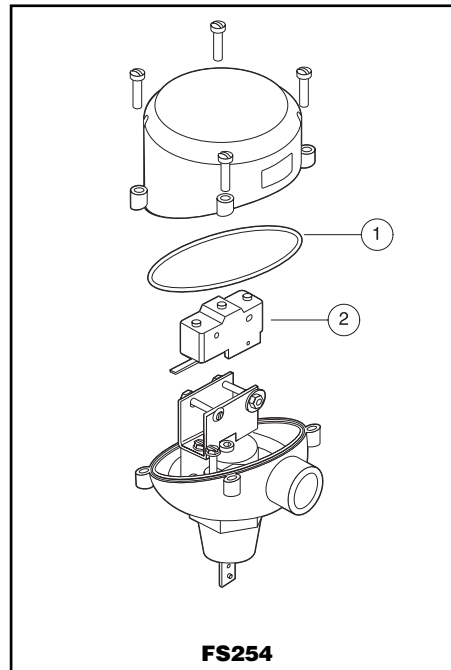
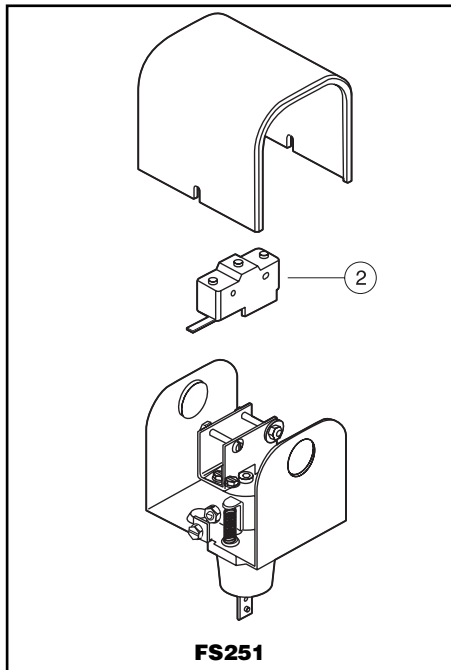


**FS251**



**FS254**

Note: Paddle kits include screws and washers.



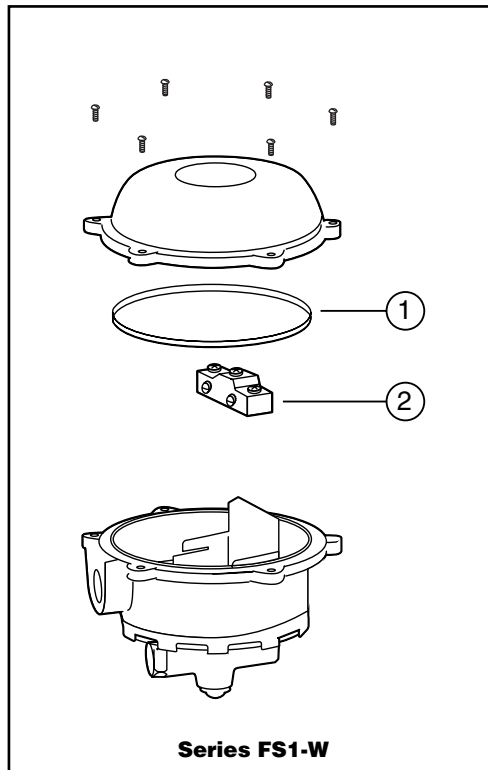
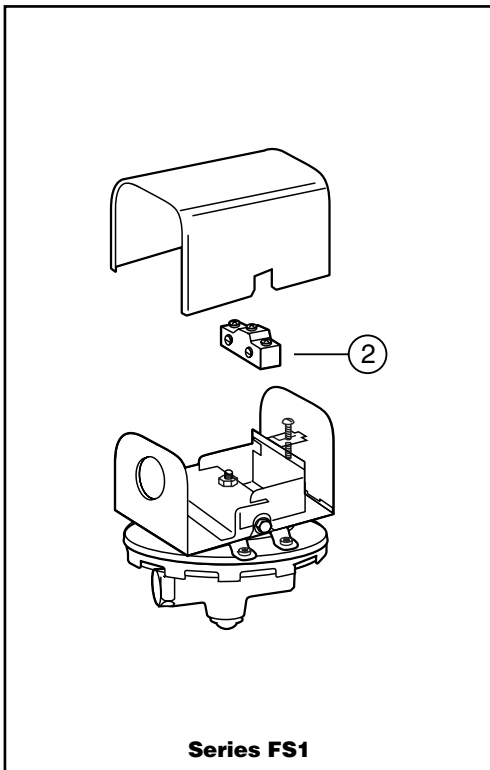


## Flow Switches – Liquid

### Series FS1 & FS1-W High Sensitivity Liquid Flow Switches

#### Components

Item Number	Part Number	Model Number	Description	Weight lbs. (kg)
1	300311	GSKT-FS1/6W	O-ring	0.3 (.14)
2	304300	FS1-17	Switch	0.1 (.05)





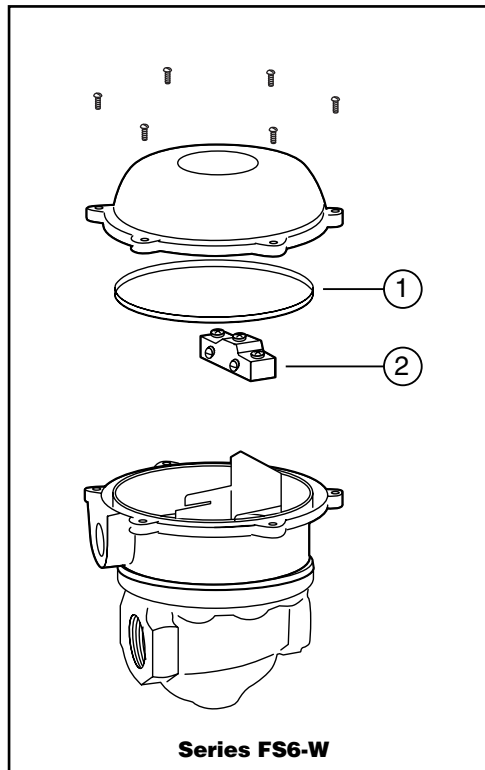
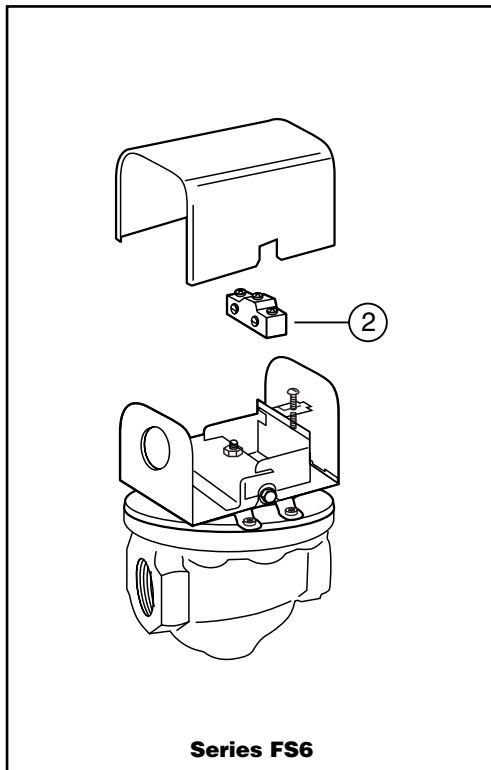


## Flow Switches – Liquid

### Series FS6 & FS6-W High Sensitivity Liquid Flow Switches

#### Components

Item Number	Part Number	Model Number	Description	Weight lbs. (kg)
1	300311	GSKT-FS1/6W	O-ring	0.1 (.05)
2	304300	FS1-17	Switch	0.3 (.14)



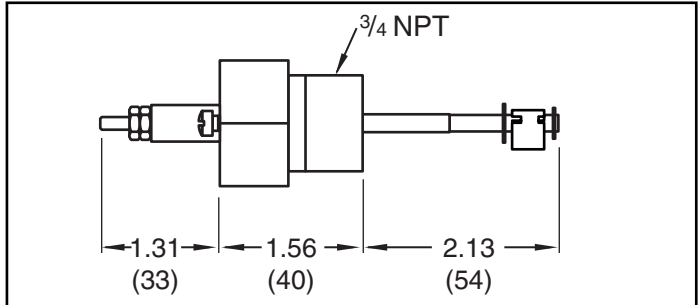


## Replacement Probes

### PA-800

For Model	Repl. Probe Model No.	Part Number	Description	Weight lbs. (kg)
PS-801-120	PA-800	354081	Probe	0.5 (.23)
PS-851-120				
PS-802-24				
PS-852-24				
RS-1-LP				
PS-851-M-120				
PS-852-M-24				
PS-801-M-120				
PS-802-M-24				
750P-MT-120				

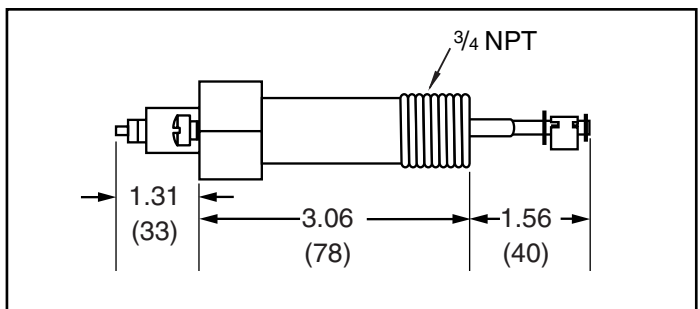
Dimensions, in. (mm)



### PA-800-U

For Model	Repl. Probe Model No.	Part Number	Description	Weight lbs. (kg)
PS-801-U-120	PA-800-U	354141	Probe	0.5 (.23)
PS-802-U-24				
PS-851-M-U-120				
PS-851-U-120				
PS-802-M-U-24				
PS-801-M-U-120				
750P-MT-U-120				

Dimensions, in. (mm)



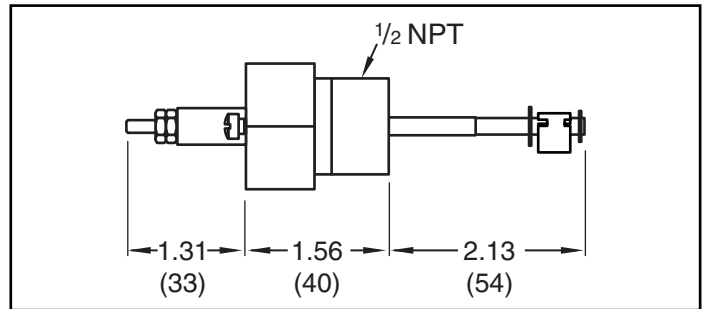


## Replacement Probes

### PA-800-RX2

For Model	Repl. Probe Model No.	Part Number	Description	Weight lbs. (kg)
PS-801-RX2-24	PA-800-RX2	354140	Probe	0.5 (.23)
PS-802-RX2-24				
PS-851-RX2-120				

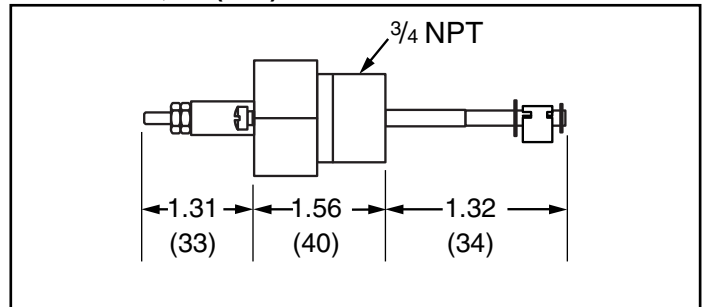
Dimensions, in. (mm)



### PA-RB-122

For Model	Repl. Probe Model No.	Part Number	Description	Weight lbs. (kg)
RB-122	PA-RB-122	354083	Probe	0.5 (.23)
RS-1-LP-S				
PS-851-SP-120				
PS-852-SP-24				
RB-120				
PS-851-M-SP-120				
PS-852-M-SP-24				

Dimensions, in. (mm)





## Low Water Cut-Offs – Float Type For Steam Boilers

### Series 67

Low Water Cut-Offs



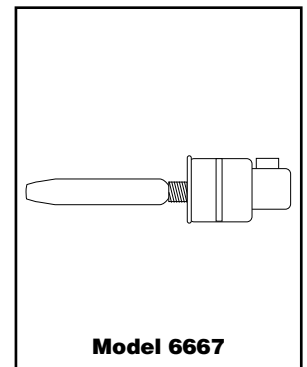
**Series 67**



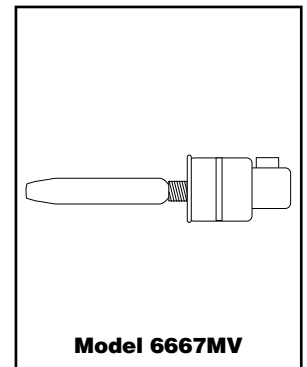
**Model 67-LQHU  
(without quick  
hook-up fittings)**

### Replacement Head Mechanisms

For Model	Repl. Head Model No.	Part Number	Description	Weight lbs. (kg)
67				
67-LQHU	6667	153825	Head mechanism	1.5 (0.7)
67-G	6667MV	153850	6667 for Millivolt service	1.5 (0.7)



**Model 6667**



**Model 6667MV**

### Components (shown on page 11)

Item Number	Part Number	Model Number	Description	Weight lbs. (kg)
1	344100	SA66-35	Upper tube assembly	1.0 (0.5)
2	334600	MA559	Quick hook-up fittings	2.5 (1.1)
3	318800	67-12	Gasket	0.1 (.05)
4	344200	SA67-2	Float and bellows assembly	1.0 (0.5)
5	309100	11	Switch	0.5 (.23)
6	309151	11-M	Switch w/manual reset	0.5 (.23)
7	309200	11-MV	No. 11 for Millivolt service	0.5 (.23)
8	310447	14-B	Blow-down valve	0.5 (.23)
9	313200	37-39	Blow-down valve gasket	0.1 (.05)

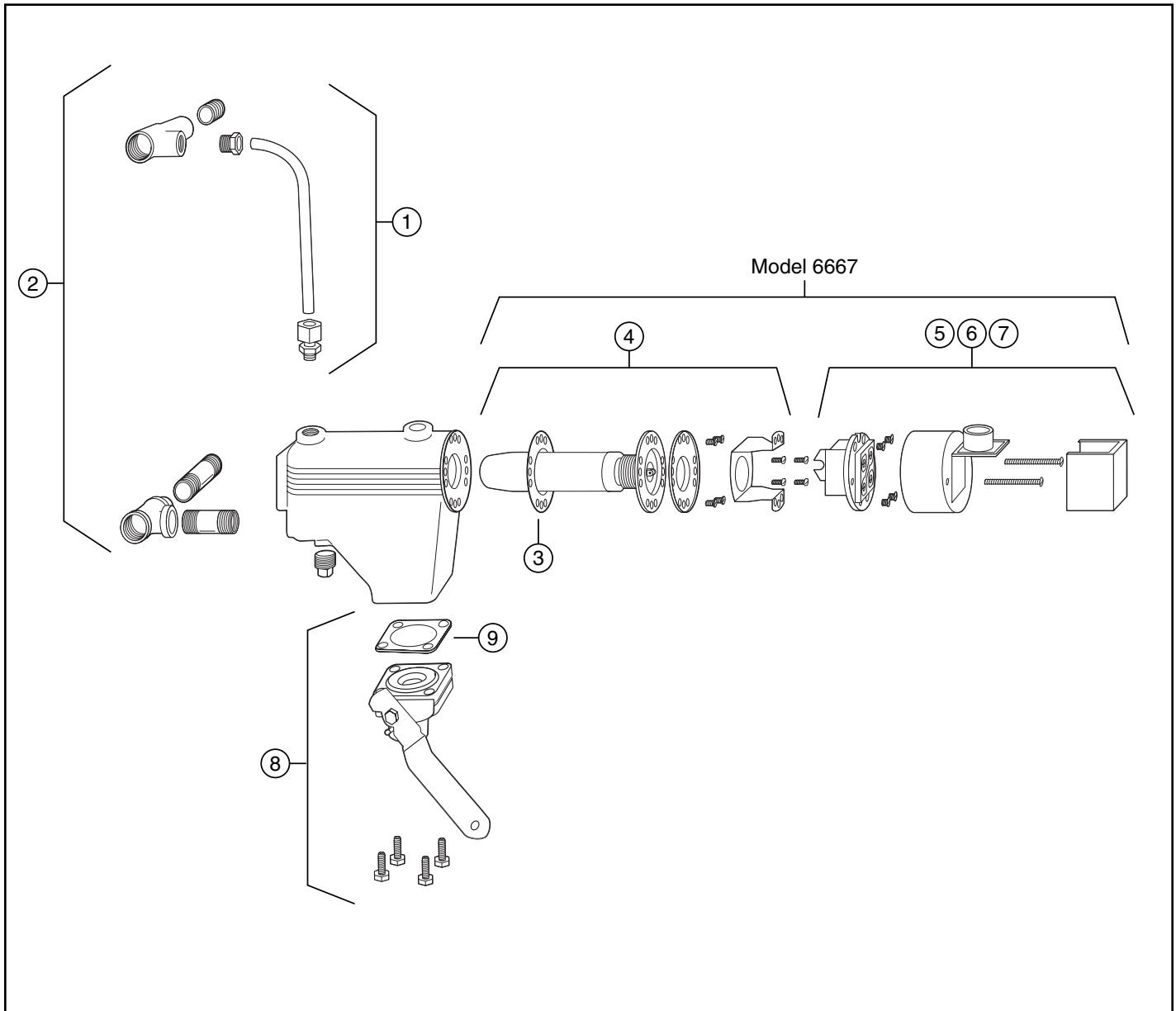


## Low Water Cut-Offs – Float Type For Steam Boilers

### Series 67 (continued)

#### Low Water Cut-Offs

#### Components





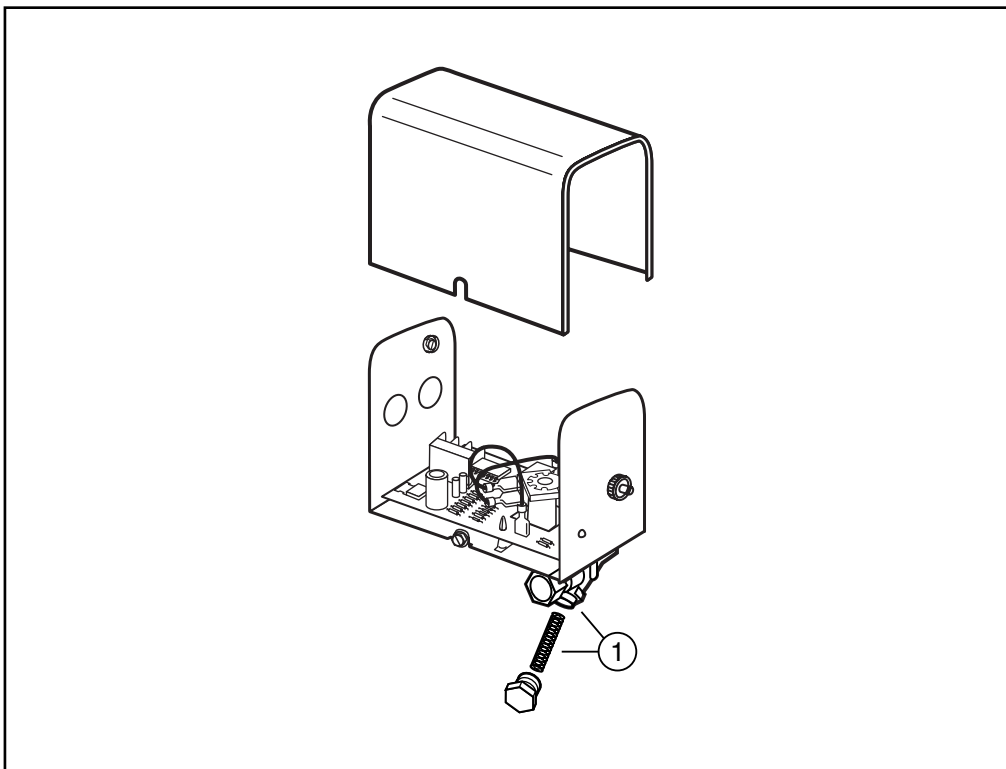
## Water Feeders – Electric

### Series WF2 Uni-Match® Electric Water Feeders



#### Components

Item Number	Part Number	Model Number	Description	Weight lbs. (kg)
1	310473	STR-WF2	Strainer/orifice kit	0.1 (.05)



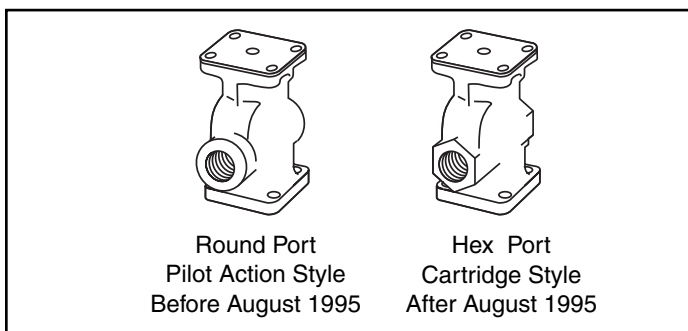
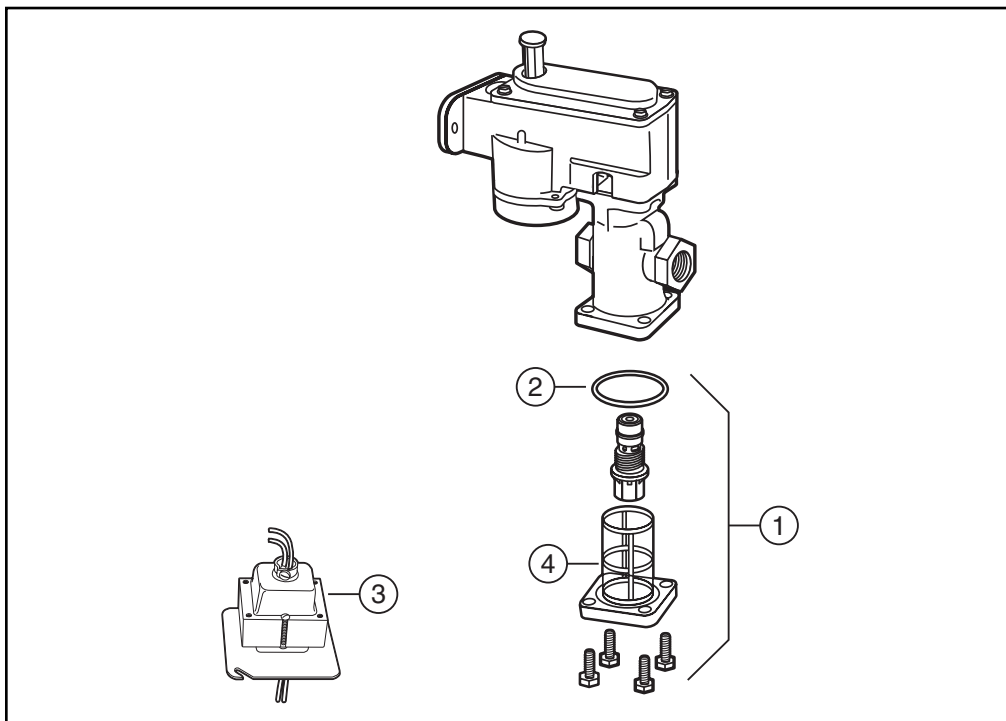


## Water Feeders – Electric

### Series 101-A Electric Water Feeders

#### Components

Item Number	Part Number	Model Number	Description	Weight lbs. (kg)
1	310453	CTRD-101	Cartridge & strainer kit	0.8 (.36)
2	324435	37-101	Tetraseal O-ring	0.1 (.05)
3	324100	101-24V-48	Transformer (24V)	3.5 (1.6)
4	347100	SA-101-38	Strainer (includes item 2)	0.7 (.32)





## Combination Mechanical Water Feeder/ Low Water Cut-Offs


### Series 47/47-2

### Mechanical Water Feeder/Low Water Cut-Offs

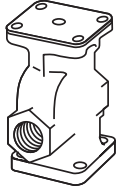
Components (shown on page 15)

Item Number	Part Number	Model Number	Description	Weight lbs. (kg)
1	310453	CTRD-101	Cartridge and strainer kit	.35 (.16)
2*	341600	SA47-101-102	Valve, cartridge & strainer assembly kit	3.0 (1.4)
3	324435	37-101	Tetraseal o-ring	0.1 (.05)
4	347100	SA101-38	Strainer for hex port valves (includes item 3)	0.7 (.32)
5	341500	SA47-4	Bellows and bracket assembly (includes item 15)	1.5 (0.7)
6	312800	37-27	Gasket	0.1 (.05)
7	302900	CO-106	Cam assembly	0.1 (.05)
8	110000	2	Switch	1.0 (0.5)
9	110100	2-M	Switch with manual reset	1.0 (0.5)
10	332800	MA-259	Quick hook-up fittings (includes item 11, 12, 13)	4.5 (2.0)
11	349400	SA159-17	Black "Y" assembly	2.3 (1.0)
12	351800	SA259-24	Upper quick hook-up fittings	1.7 (.77)
13	349500	SA159-24	Lower quick hook-up fittings	1.7 (.77)
14	340600	SA37-30	Float assembly	2.0 (0.9)
15	312700	37-26	Gasket	0.1 (.05)
16	310447	14-B	Blow-down valve (includes item 17)	1.5 (0.7)
17	313200	37-39	Blow-down valve gasket	1.0 (0.5)





Round Port  
Pilot Action Style  
Before August 1995



Hex Port  
Cartridge Style  
After August 1995

\* Units manufactured prior to August 1995 have a round port pilot valve and a strainer assembly. These valve and strainer assemblies can be replaced with the current hex port cartridge valve and strainer assembly.



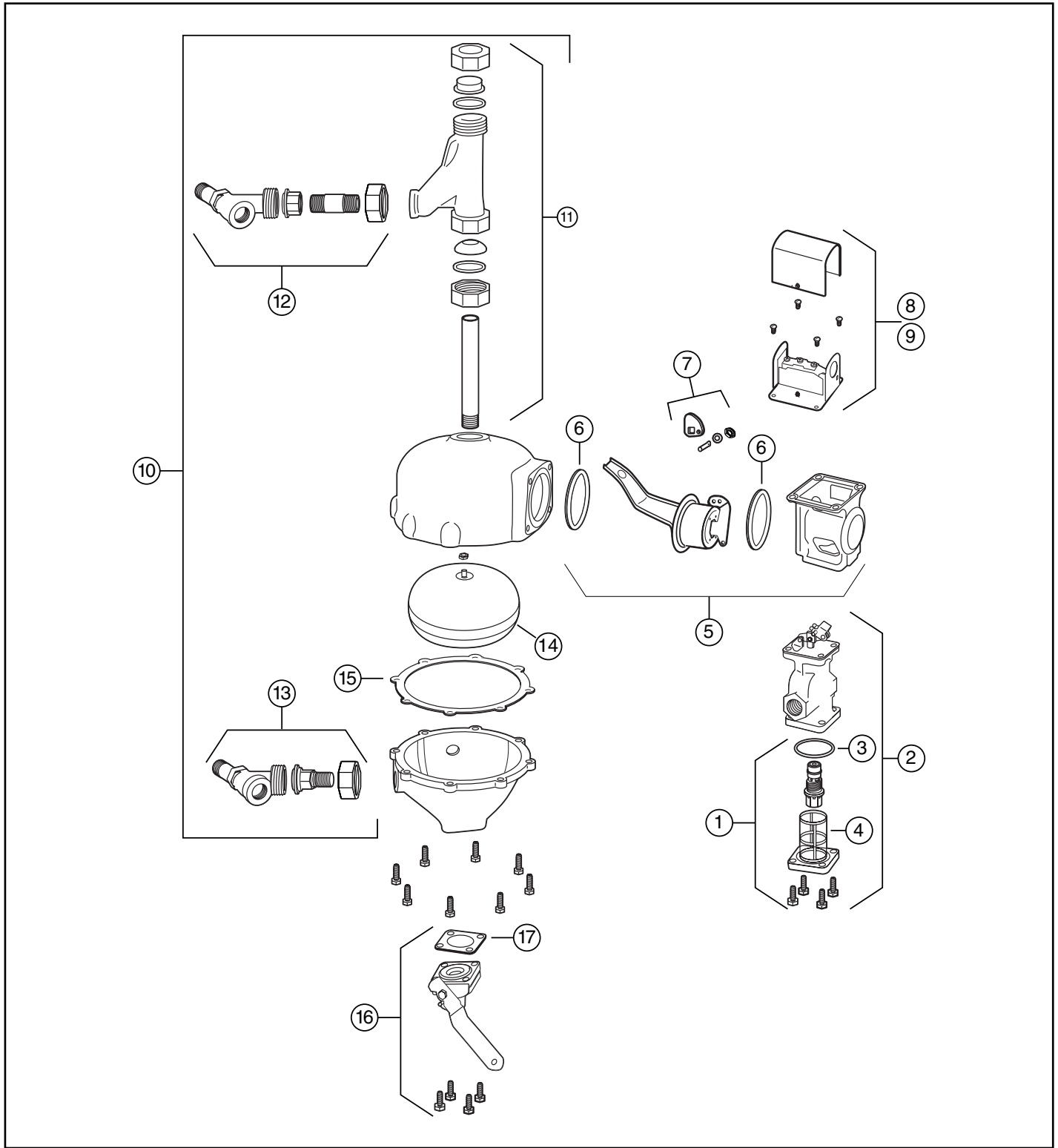


## Combination Mechanical Water Feeder/ Low Water Cut-Offs

### Series 47/47-2 (continued)

#### Mechanical Water Feeder/Low Water Cut-Offs

#### Components





**IMPORTANT**

- Product repairs made with non-McDonnell & Miller parts will invalidate our warranty as well as any agency recognitions. Without this recognition the product would no longer be eligible for use in listed end-use equipment.
- Previously used controls should never be installed on a new system. Always install new controls on a new boiler or system.
- A more frequent replacement interval may be necessary based on the condition of the unit at time of inspection. ITT McDonnell & Miller's warranty is one (1) year from date of installation or two (2) years from the date of manufacture.
- Use of water treatment can diminish product life. In such cases, components should be replaced on a more frequent basis.
- Visually inspect the inside of the float chamber during the annual inspection. Partial disassembly may be required.

**Inspect all controls annually, and replace, repair or clean, as needed.** All chambered units are to be blown down per manufacturers instructions and local code requirements. These requirements are to be determined by the local service company, and are based on water quality and system operation variables.

Refer to the installation instructions provided with the product for specific assembly and test procedures.  
**McDonnell & Miller products must also be maintained in accordance with the following ASME Code.**

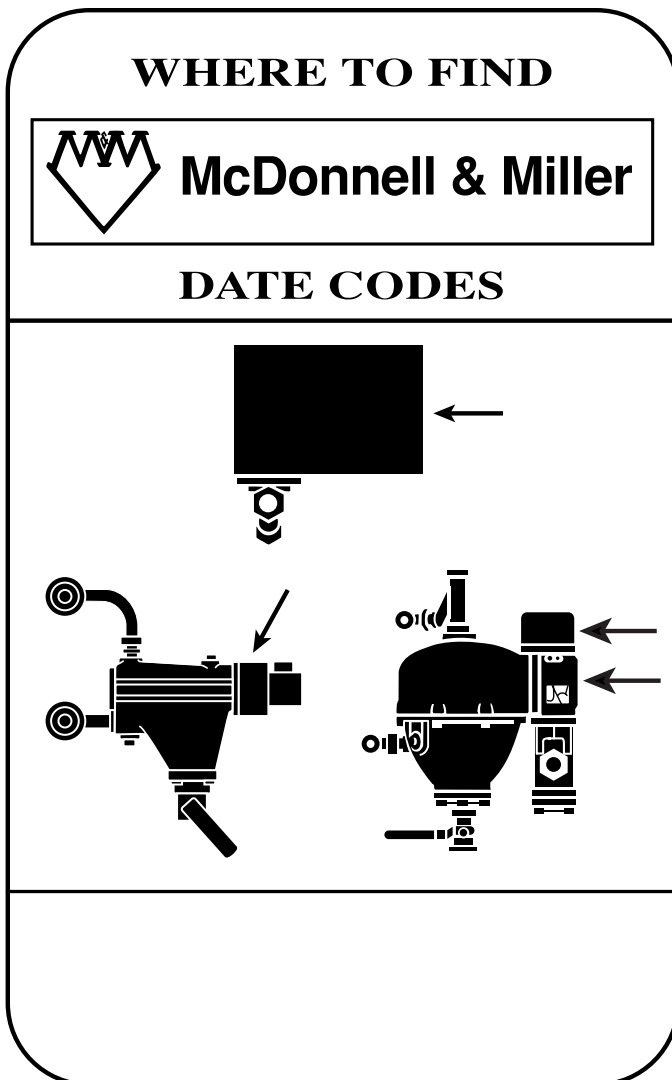
**ASME Boiler and Pressure Vessel Code – Section VI Paragraph 7.07 G**


**Low-Water Fuel Cut-Off and Water Feeder Maintenance.** Low-water fuel cut-offs and water feeders should be dismantled annually, by qualified personnel, to the extent necessary to insure freedom from obstructions and proper functioning of the working parts., Inspect connecting lines to boiler for accumulation of mud, scale, etc., and clean as required. Examine all visible wiring for brittle or worn insulation and make sure electrical contacts are clean and that they function properly. Give special atten-

tion to solder joints on bellows and float when this type of control is used. Check float for evidence of collapse and check mercury bulb (where applicable) for mercury separation or discoloration. Do not attempt to repair mechanisms in the field. Complete replacement mechanisms, including necessary gaskets and installation instructions are available from the manufacturer. After reassembly, test as per 7.05H.

ITT McDonnell & Miller controls manufactured after 1972 feature a stamped date code, so you can easily check the life expectancy and recommended replacement intervals. **If a control has no date stamp or does not have the ITT logo on it – replace it!**

See the chart (next page) for more specific information on maintenance and replacement intervals. Below are guides to help you quickly locate and translate the date code on McDonnell & Miller controls.




**McDonnell & Miller**

**Product Date Code Translation**

Month	Year	Example
A = January	W = 1979 X = 1980	<b>K09</b> Translates to <b>October 1990</b>
B = February	Y = 1981 Z = 1982	
C = March	38 = 1983 48 = 1984	
D = April	58 = 1985 68 = 1986	
E = May	78 = 1987 88 = 1988	
F = June	98 = 1989	
G = July	09 = 1990	
H = August	19 = 1991 29 = 1992	
J = September	39 = 1993 49 = 1994	
K = October	59 = 1995	
L = November	96 = 1996 97 = 1997	Beginning 1996 the year is no longer reversed. <b>96K</b> Translates to <b>October 1996</b>
M = December	98 = 1998 99 = 1999	
	00 = 2000	
	01 = 2001	
	02 = 2002	
	03 = 2003	
	04 = 2004	
	05 = 2005	
	06 = 2006	
	07 = 2007	
	08 = 2008	
	09 = 2009	

## Recommended Replacement Intervals

Product	Series	Recommended Maintenance	Recommended Replacement Interval (Maximum)
Low Water Cut-Offs	150, 157, 158, 159, 150S, 157S, 158S, 159S	Blow down and test daily inspect annually.	15 years
	69, 169, 269, 369, 469	Inspect and test annually.	10 years
	67, 767 70, 70-B	Blow down weekly. Inspect and test annually.	10 years
	61, 63, 64, 764	Blow down weekly. Inspect and test annually.	10 years
	42	Blow down daily. Inspect and test annually.	10 years
	93, 94, 193, 194	Blow down and test daily. Inspect and test annually.	15 years
	750, PS-800, PA-850, 900, RB-120	Inspect and test annually.	15 years
	RB-24	Inspect and test annually.	10 years
Water Feeders	WF2/Uni-Match®	Inspect and test annually. Replace filter annually.	10 years
	101-A	Inspect, test, and replace cartridge valve annually.	10 years
	21, 221, 25-A, 53, 551-S, 847, 3155	Inspect and test annually.	15 years
	47, 51, 53, 247	Blow down weekly. Inspect and replace cartridge valve annually.	10 years
Liquid Level Controls	LPC-2000, PS-850, PCH PCL, PFC, VFC, VFS	Inspect and test annually.	15 years
	18, 18-SS, 27-W	Inspect and test annually.	5 years
Replacement Blow Down Valves	14-B	Inspect and test annually.	10 years
	14	Replace with 14-B blow down valve.	3 years
Replacement Probes	750, PS-800, PS-850, 900, RB-120, PCH, PCL	Inspect annually.	10 years
Replacement Head Mechanisms for Commercial/Industrial Applications	25-A, 42, 51, 51-S, 53, 61, 63, 64, 67, 70, 93 94, 150, 150S, 157, 157S, 193, 194	Inspect and test annually.	5 years





# ITT

## MCDONNELL & MILLER PRODUCTS

### Stocked ... Sold ... Serviced EVERYWHERE!

FOR MORE DETAILS CALL YOUR LOCAL MCDONNELL & MILLER REPRESENTATIVE

#### ALABAMA

Mangham & Associates, Inc.  
Irontdale (Birmingham)  
Phone: 205/956-2362

#### ALASKA

Columbia Hydronics Co.  
Anchorage  
Phone: 907/563-3327  
907/563-3337

#### ARIZONA

J & B Sales Company  
Phoenix  
Phone: 602/258-1545

#### ARKANSAS

Johnson & Scott, Inc.  
Little Rock  
Phone: 501/803-9520  
Hydronic Technology Inc.  
Shreveport, LA  
Phone: 318/797-1500  
Boone & Boone Sales Co., Inc.  
Tulsa, OK  
Phone: 918/664-9756

#### CALIFORNIA

California Hydronics Corp.  
Hayward (San Francisco)  
Phone: 510/293-1993  
Rocklin (Sacramento)  
Phone: 510/293-1993  
San Jose  
Phone: 408/295-5874  
Dawson Co.  
Altadena (Los Angeles)  
Phone: 626/797-9710  
San Diego  
Phone: 858/541-7867

#### COLORADO

McNevin Company  
Aurora (Denver)  
Phone: 303/322-0165

#### CONNECTICUT

F.I.A., Inc.  
Middleton  
Phone: 781-938-8900  
Woburn (Boston) MA  
Phone: 781/938-8900

#### DELAWARE

R. D. Bitzer Co., Inc.  
Bensalem, PA  
Phone: 215/604-6600  
Cummins-Wagner Co., Inc.  
Annapolis Junction, MD  
Phone: 800/966-1277  
301/490-9007

#### FLORIDA

George A. Israel Jr., Inc.  
Jacksonville  
Phone: 904/355-7867  
Miami  
Phone: 305/592-5343  
Orlando  
Phone: 407/423-5078  
Tampa  
Phone: 813/839-2161  
79 Holly Circle  
Tequesta, FL 33469  
Phone: 561/248-3556

#### GEORGIA

James M. Pleasants Co., Inc.  
Duluth  
Phone: 678/507-1091  
Norcross  
Phone: 800/522-1861  
678/507-1091  
George A. Israel Jr., Inc.  
Jacksonville, FL  
Phone: 904/355-7867

#### HAWAII

CBC Inc.  
Kailua  
Phone: 808/263-8838

#### IDAHO

Gritton & Associates, Inc.  
Salt Lake City, UT  
Phone: 801/486-0767  
Columbia Hydronics Co.  
Boise  
Phone: 208/345-2744

#### ILLINOIS

Bornquist, Inc.  
Chicago  
Phone: 773/774-2800  
Blackmore & Glunt, Inc.  
Maryland Hgts. (St. Louis) MO  
Phone: 314/878-4313  
Sandberg Co., Inc.  
East Moline  
Phone: 309/796-2371  
Hydronic & Steam Equip. Co., Inc.  
Indianapolis, IN  
Phone: 800/669-4926  
317/577-8326

#### INDIANA

Hydronic & Steam Equip. Co., Inc.  
Indianapolis  
Phone: 800/669-4926  
317/577-8326  
Evansville  
Phone: 800/473-2753  
812/473-0330  
Ft. Wayne  
Phone: 260/489-5785  
South Bend  
Phone: 800/932-6490  
574/234-6005

#### Bornquist, Inc.

Chicago, IL  
Phone: 773/774-2800  
Blackmore & Glunt, Inc.  
Cincinnati, OH  
Phone: 513/489-5225

#### IOWA

Products, Inc.  
Des Moines  
Phone: 515/288-5738  
Sandberg Co., Inc.  
East Moline, IL  
Phone: 309/796-2371  
Verne Simmonds Co.  
Omaha, NE  
Phone: 402/592-3131

#### KANSAS

Blackmore & Glunt, Inc.  
Lenexa (Kansas City)  
Phone: 913/469-5715

#### KENTUCKY

Blackmore & Glunt, Inc.  
Cincinnati, OH  
Phone: 513/489-5225  
Hydronic & Steam Equip. Co., Inc.  
Evansville, IN  
Phone: 800/473-2753  
812/473-0330

#### Johnson & Scott, Inc.

Nashville, TN  
Phone: 615/254-5454

#### LOUISIANA

Hydronic Technology Inc.  
New Orleans  
Phone: 800/365-6746  
504/827-1163  
Shreveport  
Phone: 800/673-5737  
318/797-1500

#### MAINE

F.I.A., Inc.  
Woburn (Boston) MA  
Phone: 781/938-8900

#### MARYLAND

Cummins-Wagner Co., Inc.  
Annapolis Junction  
Phone: 800/966-1277  
301/490-9007  
Thermoflo Equipment Co., Inc.  
Pittsburgh, PA  
Phone: 412/366-2012

#### MASSACHUSETTS

F.I.A., Inc.  
Woburn (Boston)  
Phone: 781/938-8900

#### MICHIGAN

R. L. Deppmann Co.  
Southfield (Detroit)  
Phone: 248/354-3710  
Grand Rapids  
Phone: 616/656-0821  
Bridgeport  
Phone: 989/652-3049  
Hydro-Flo Products, Inc.  
Brookfield (Milwaukee), WI  
Phone: 262/781-2810

#### MINNESOTA

Mulcahy Company  
Eagan  
Phone: 651/686-8580

#### MISSISSIPPI

Hydronic Technology Inc.  
New Orleans, LA  
Phone: 800/365-6746  
504/827-1163

#### Johnson & Scott, Inc.

Little Rock, AR  
Phone: 501/803-9520

#### MISSOURI

Blackmore & Glunt, Inc.  
Lenexa (Kansas City) KS  
Phone: 913/469-5715  
Maryland Hgts. (St. Louis)  
Phone: 314/878-4313

#### MONTANA

Columbia Hydronics Co.  
Spokane, WA  
Phone: 509/242-1118

#### NEBRASKA

Verne Simmonds Co.  
Omaha  
Phone: 402/592-3131

#### NEVADA

California Hydronics Corp.  
Rocklin, CA (Northwest NV)  
Phone: 510/293-1993

#### Gritton & Associates, Inc.

Salt Lake City, UT  
Phone: 801/486-0767

#### NEW HAMPSHIRE

F.I.A., Inc.  
Woburn (Boston) MA  
Phone: 781/938-8900

#### NEW JERSEY

Wallace-Eannace Assoc., Inc.  
Franklin Lakes  
Phone: 201/891-9550

#### R. D. Bitzer Co., Inc.

Bensalem, PA  
Phone: 215/604-6600

#### NEW MEXICO

Boyd Engineering Co., Inc.  
Albuquerque  
Phone: 505/275-1250

#### NEW YORK

Wallace-Eannace Assoc., Inc.  
Plainview (NYC)  
Phone: 516/454-9300  
Frank P. Langley Co., Inc.  
E. Rochester  
Phone: 585/248-5010  
Amherst (Buffalo)  
Phone: 716/691-7575  
Johnston City  
Phone: 607/766-9950  
Albany  
Phone: 518/459-1060

#### Syracuse Thermal Products, Inc.

East Syracuse  
Phone: 315/437-7321

#### NORTH CAROLINA

James M. Pleasants Co., Inc.  
Greensboro  
Phone: 800/365-9010  
336/378-9911

#### Charlotte

Phone: 704/545-0145  
Raleigh  
Phone: 919/845-1960  
Wilmington  
Phone: 910/794-5447

#### NORTH DAKOTA

Mulcahy Company  
Eagan, MN  
Phone: 651/686-8580

#### OHIO

Blackmore & Glunt, Inc.  
Cincinnati  
Phone: 513/489-5225  
R. L. Deppmann Co.  
Richfield  
Phone: 330/468-1102

#### OHIO (Cont'd.)

Steffens-Shultz, Inc.  
Columbus  
Phone: 614/274-5515  
Dayton, Ohio  
Phone: 937/454-4980  
Thermoflo Equipment Co., Inc.  
Pittsburgh, PA  
Phone: 412/366-2012

#### OKLAHOMA

Boone & Boone Sales Co., Inc.  
Oklahoma City  
Phone: 405/525-7475  
Tulsa  
Phone: 918/664-9756

#### OREGON

Columbia Hydronics Co.  
Vancouver, WA  
Phone: 360/883-2600

#### PENNSYLVANIA

R. D. Bitzer Co., Inc.  
Bensalem  
Phone: 215/604-6600  
Thermoflo Equipment Co., Inc.  
Pittsburgh  
Phone: 412/366-2012

#### Frank P. Langley Co., Inc.

Amherst (Buffalo) NY  
Phone: 716/691-7575

#### RHODE ISLAND

F.I.A., Inc.  
Woburn (Boston) MA  
Phone: 781/938-8900

#### SOUTH CAROLINA

James M. Pleasants Co., Inc.  
Greensboro, NC  
Phone: 800/365-9010  
336/378-9911

#### Columbia

Phone: 803/798-1405  
Greenville  
Phone: 864/232-0200

#### SOUTH DAKOTA

Mulcahy Company  
Eagan, MN  
Phone: 651/686-8580

#### Verne Simmonds Co.

Omaha, NE  
Phone: 402/592-3131

#### TENNESSEE

Johnson & Scott, Inc.  
Nashville  
Phone: 615/254-5454  
Cordova (Memphis)  
Phone: 901/388-2919  
James M. Pleasants Co., Inc.  
Greensboro, NC  
Phone: 800/365-9010  
336/378-9911  
Knoxville  
Phone: 865/584-5054

#### TEXAS

Boyd Engineering Co., Inc.  
Albuquerque, NM  
Phone: 505/275-1250  
Oslin Nation Co.  
Dallas  
Phone: 214/631-5650  
Ft. Worth  
Phone: 817/590-2500

#### TEXAS (Cont'd.)

Oslin Nation Co. (Cont'd)  
Houston  
Phone: 713/699-3500  
San Antonio  
Phone: 800/243-7756  
210/342-5544

#### UTAH

Gritton & Associates, Inc.  
Salt Lake City  
Phone: 801/486-0767

#### VERMONT

F.I.A., Inc.  
Woburn (Boston) MA  
Phone: 781/938-8900

#### VIRGINIA

TLA, Inc.  
Richmond  
Phone: 804/321-4444  
Virginia Beach  
Phone: 757/497-3567  
Cummins-Wagner Co., Inc.  
Annapolis Junction, MD  
Phone: 800/966-1277  
301/490-9007

#### WASHINGTON

Columbia Hydronics Co.  
Renton  
Phone: 425/271-5870  
Spokane  
Phone: 509/242-1118  
Vancouver  
Phone: 360/883-2600

#### WASHINGTON, DC

Cummins-Wagner Co., Inc.  
Annapolis Junction, MD  
Phone: 800/966-1277  
301/490-9007

#### WEST VIRGINIA

Blackmore & Glunt, Inc.  
Cincinnati, OH  
Phone: 513/489-5225

#### TLA, Inc.

Richmond, VA  
Phone: 804/321-4444

#### Thermoflo Equipment Co., Inc.

Pittsburgh, PA  
Phone: 412/366-2012

#### WISCONSIN

Hydro-Flo Products, Inc.  
Brookfield (Milwaukee)  
Phone: 262/781-2810

#### Mulcahy Company

Eagan, MN  
Phone: 651/686-8580

#### WYOMING

Gritton & Associates, Inc.  
Salt Lake City, UT  
Phone: 801/486-0767

#### J. E. McNevin Co.

Aurora (Denver), CO  
Phone: 303/322-0165

#### INTERNATIONAL:

Visit our website or contact our office at the address shown below.

© COPYRIGHT 2007 BY  
ITT CORPORATION  
PRINTED IN U.S.A. 12-07

THE ITT ENGINEERED BLOCKS SYMBOL AND  
ENGINEERED FOR LIFE ARE REGISTERED  
TRADEMARKS OF ITT CORPORATION

ITT

2800 N. Austin Avenue  
Morton Grove, IL 60053  
Phone: (847) 966-3700  
Fax: (847) 966-9052  
www.mcdonnellmiller.com

