

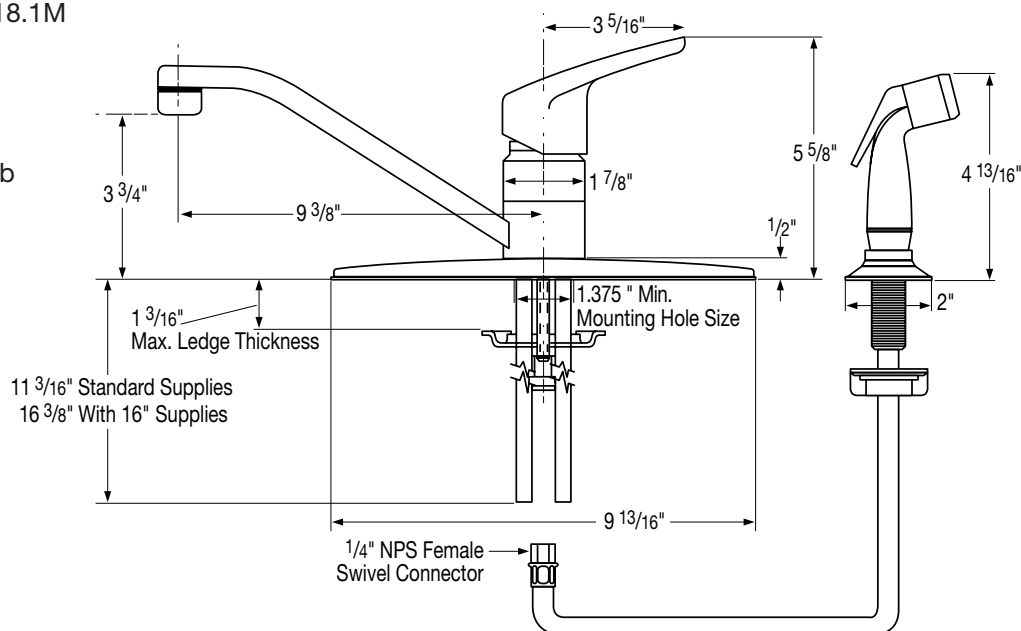
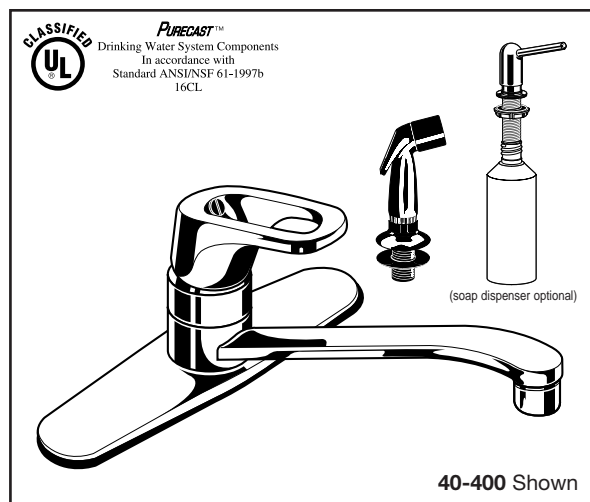
Single Handle Kitchen Faucet

Features:

- Ceramaflow™ ceramic disc cartridge
- Exposed parts have heavy chrome plated finish
- Working parts can be easily replaced
- 2.2 gpm (8.3 L/min) @ 60 psi maximum aerator
- Supplied with 1/4" nominal copper tubes and 1/2" I.P.S. compression adapters
- Brass escutcheon plate
- Loop style zinc metal chrome plated handle
- ADA compliant handle operates with less than 5 lbs. force
- Optional soap/lotion dispenser

Technical Specifications:

- ANSI/ASME A112.18.1M
- ASSE 1025
- ANSI A117.1 (ADA)
- CSA B125
- ANSI/NSF 61-1997b



Catalog Numbers:

Number	Less spray Less soap disp 3 hole inst	Less spray With soap disp 3 hole inst	With spray Less soap disp 4 hole inst	With spray With soap disp 4 hole inst
Chrome	40-100	40-103	40-400	40-403
Almond	AL-100	AL-103	AL-400	AL-403
White	WH-100	WH-103	WH-400	WH-403

Prefixes Available:

None

Suffixes Available

- 16 16" Copper Supplies
- 45 Almond spray hose and holder (std on AL-units)
- 46 White spray hose and holder (std on WH-units)
- 50 1/2" soldered male adapters on copper
- 67 Vandal proof aerator- .5 gpm
- 68 Vandal proof aerator- 2.2 gpm
- 69 Vandal resistant handle screw

GERBER

PROFESSIONALLY MADE • PROFESSIONALLY SOLD • PROFESSIONALLY INSTALLED

Gerber Plumbing Fixtures Corp., 4600 W. Touhy Avenue, Chicago IL 60646

(847) 675-6570, FAX 1-800-5GERBER (Illinois FAX (847) 675-5192)

©1998 Gerber Plumbing Fixtures Corp. www.gerberonline.com

