

Order Plumbing, Heating & HVAC Supplies Online!

PexSupply.com

T O P S E L L E R S C A T A L O G



FREE SHIPPING Guaranteed
On Orders over **\$300** **LOWEST PRICES**

www.pexsupply.com • 888.757.4774



PexSupply.com has over 25,000 products available for plumbing, heating & HVAC.

We offer high quality products from the best manufacturers in the industry. While this catalog features many of our most popular items, we couldn't fit them all. Visit **www.pexsupply.com** to shop from our full catalog with detailed specifications, product manuals, videos and more. If you have any questions or need an item you can't find, give our Customer Service Team a call at **(888) 757-4774**.

Placing an Order

- Go to **www.pexsupply.com**
- Search for items by Brand, Category, or SKU #
- Type in desired quantity and "Add to Cart"
- Estimate shipping costs (**FREE shipping** on orders over \$300)
- Make your Secure Payment

If you have any questions, or would like to place a phone order, feel free to contact one of our Customer Service Representatives at **(888) 757-4774**.

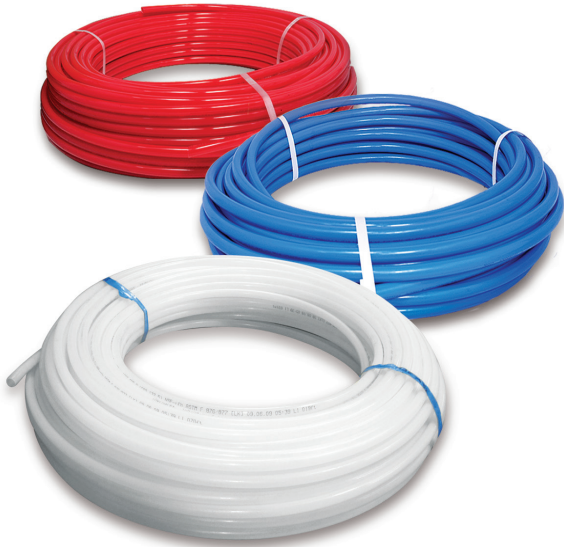
For the latest prices, go to www.pexsupply.com.

Table of Contents

PEX Plumbing.....	1	Other Thermostats.....	9
Oxygen Barrier Tubing	2	Circulator Pumps.....	10
Radiant Heat Manifolds & Panels.....	3	Aquastats, Zone & Mixing Valves.....	11
ProPEX Tools & Fittings	4	Baseboard Heaters	12
PEX Crimp Tools & Fittings.....	5	Expansion Tanks & Air Valves	13
Other Tools & Fittings	6	Water Heaters.....	14
Boilers.....	7	Plumbing Specialties.....	15
Honeywell Thermostats	8	HVAC	16-17

PEX Plumbing

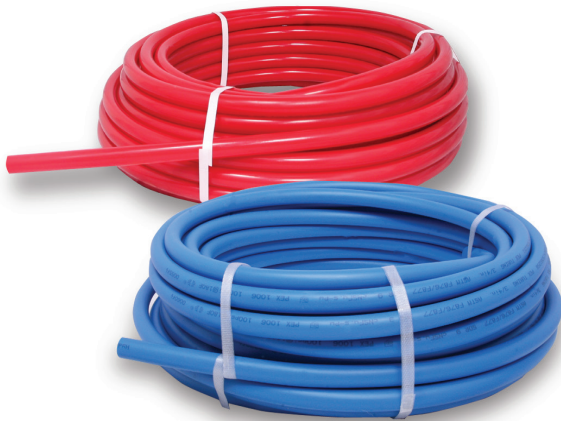
The PEX tubing on this page is designed for use in potable plumbing systems. It is available in red and blue to designate hot & cold water lines (also available in white).



AquaPEX Tubing

- Meets ASTM F876/877 & SDR 9 standards
- Pressure tested to 180° at 100 psi
- PEX-a tubing
- Manufactured by Uponor (Wirsbo)

SKU	Description
F1040500	1/2" AquaPEX White Tubing (100 ft. Coil)
F2040500	1/2" AquaPEX Red Tubing (100 ft. Coil)
F3040500	1/2" AquaPEX Blue Tubing (100 ft. Coil)
F1060500	1/2" AquaPEX White Tubing (300 ft. Coil)
F2060500	1/2" AquaPEX Red Tubing (300 ft. Coil)
F3060500	1/2" AquaPEX Blue Tubing (300 ft. Coil)
F1120500	1/2" AquaPEX White Tubing (1000 ft. Coil)
F2120500	1/2" AquaPEX Red Tubing (1000 ft. Coil)
F3120500	1/2" AquaPEX Blue Tubing (1000 ft. Coil)
F1040750	3/4" AquaPEX White Tubing (100 ft. Coil)
F2040750	3/4" AquaPEX Red Tubing (100 ft. Coil)
F3040750	3/4" AquaPEX Blue Tubing (100 ft. Coil)
F1060750	3/4" AquaPEX White Tubing (300 ft. Coil)
F2060750	3/4" AquaPEX Red Tubing (300 ft. Coil)
F3060750	3/4" AquaPEX Blue Tubing (300 ft. Coil)
F1041000	1" AquaPEX White Tubing (100 ft. Coil)
F2041000	1" AquaPEX Red Tubing (100 ft. Coil)
F3041000	1" AquaPEX Blue Tubing (100 ft. Coil)



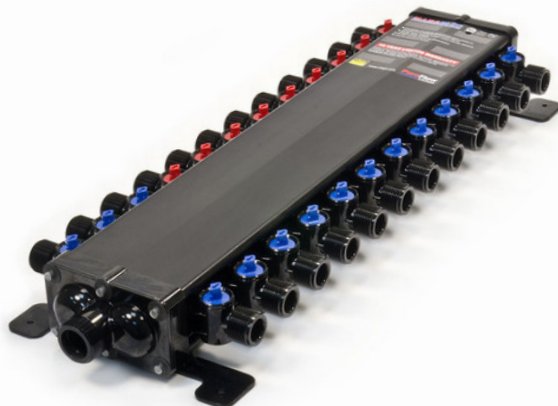
Rifeng Tubing

- Meets ASTM F876/877 & SDR 9 standards
- Pressure tested to 180° at 100 psi
- PEX-b tubing

SKU	Description
050-100-B	1/2" Blue PEX Tubing (100 ft. Coil)
050-100-R	1/2" Red PEX Tubing (100 ft. Coil)
050-300-B	1/2" Blue PEX Tubing (300 ft. Coil)
050-300-R	1/2" Red PEX Tubing (300 ft. Coil)
050-1000-B	1/2" Blue PEX Tubing (1,000 ft. Coil)
050-1000-R	1/2" Red PEX Tubing (1,000 ft. Coil)
075-100-B	3/4" Blue PEX Tubing (100 ft. Coil)
075-100-R	3/4" Red PEX Tubing (100 ft. Coil)
075-300-B	3/4" Blue PEX Tubing (300 ft. Coil)
075-300-R	3/4" Red PEX Tubing (300 ft. Coil)
100-100-B	1" Blue PEX Tubing (100 ft. Coil)
100-100-R	1" Red PEX Tubing (100 ft. Coil)

MANABLOC

The 24-port Crimp MANABLOC is our most popular model. MANABLOCs are available in crimp, compression, or press style, with 14 to 30 ports.



SKU	Description
41243	1/2", 24 Port Crimp Manabloc
46414	3/4" PEX Crimp x Manabloc Supply Adapter
53601	Manabloc Supply End Cap
45716	Set of 2 Mounting Straps
50601	Valve T-Handle

Oxygen Barrier Tubing (Radiant Heat)

Oxygen Barrier PEX tubing is designed for use in heating systems such as radiant heat, hydronic heat, and snow melt systems. It has an extra layer that ensures no oxygen can enter the system, which helps to prevent the components from rusting. Oxygen Barrier PEX is intended for heating applications and has not been approved for plumbing or drinking water applications.



ThermaPEX

ThermaPEX is PEX-a tubing with an oxygen barrier, and is manufactured by LK PEX, the second largest manufacturer of PEX in Europe.

- Meets ASTM F876, F877 & DIN 4726
- Certified by the NSF
- Rated by the PPI: 200°F at 80 psi, 180°F at 100 psi, 73.4°F at 160 psi

SKU	Description
T050-300	1/2" ThermaPEX Oxygen Barrier PEX Tubing (300 ft. coil)
T050-500	1/2" ThermaPEX Oxygen Barrier PEX Tubing (500 ft. coil)
T050-1000	1/2" ThermaPEX Oxygen Barrier PEX Tubing (1000 ft. coil)
T050-1200	1/2" ThermaPEX Oxygen Barrier PEX Tubing (1200 ft. coil)
T075-300	3/4" ThermaPEX Oxygen Barrier PEX Tubing (300 ft. coil)
T100-300	1" ThermaPEX Oxygen Barrier PEX Tubing (300 ft. coil)



hePEX Oxygen Barrier PEX Tubing

hePEX Oxygen Barrier Tubing is a PEX-a tubing manufactured by Uponor (Wirsbo).

- Meets ASTM F876, F877 & DIN 4726
- Certified by the NSF
- Rated by the PPI: 200°F at 80 psi, 180°F at 100 psi, 73.4°F at 160 psi

SKU	Description
A1180313	5/16" hePEX plus (250 ft. coil)
A1220313	5/16" hePEX plus (1000 ft. coil)
A1250500	1/2" hePEX plus (300 ft. coil)
A1220500	1/2" hePEX plus (1000 ft. coil)
A1250750	3/4" hePEX plus (300 ft. coil)
A1251000	1" hePEX plus (300 ft. coil)



Rifeng Oxygen Barrier PEX Tubing

This is a PEX-b tubing manufactured by Rifeng, the largest producer of plastic pipe in the world.

- Rated by the PPI: 200°F at 80 psi
- Meets ASTM F876 & F877
- 25-Year warranty
- Meets CTS-OD & SDR9

SKU	Description
050-300-OXY	3/4" Oxygen Barrier PEX Tubing (300 ft. Coil)
050-1000-OXY	1/2" Oxygen Barrier PEX Tubing (1,000 ft. Coil)
062-1000-OXY	5/8" Oxygen Barrier PEX Tubing (1,000 ft. Coil)
062-400-OXY	5/8" Oxygen Barrier PEX Tubing (400 ft. Coil)
075-300-OXY	3/4" Oxygen Barrier PEX Tubing (300 ft. Coil)



Rifeng PEX-Aluminum-PEX

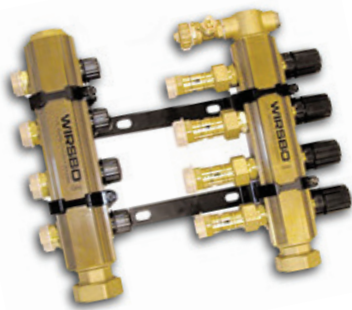
- Composite PEX tubing with 100% aluminum core layer
- Holds its shape when bent

SKU	Description
050-300-PAP	1/2" PEX-AL-PEX Tubing (300 ft. coil)
050-1000-PAP	1/2" PEX-AL-PEX Tubing (1000 ft. coil)
075-300-PAP	3/4" PEX-AL-PEX Tubing (300 ft. coil)

Radiant Heat Manifolds & Panels

Uponor (Wirsbo) TruFLOW Manifolds

Uponor's TruFLOW brass manifolds are reliable, widely-used, and, best of all, require no assembly. They can be mounted on the wall right out of the box. They feature loop isolation capability with an electronic balancing system that reads both the temperature and the flow per loop.



SKU	Description
A2610200	TruFLOW Manifold, 2-loop S&R
A2610300	TruFLOW Manifold, 3-loop S&R
A2610400	TruFLOW Manifold, 4-loop S&R
A2610500	TruFLOW Manifold, 5-loop S&R
E6122000	Pressure Test Kit



Uponor (Wirsbo) Quik Trak Panels

- For use with Uponor (Wirsbo) 5/16" hePEX tubing only
- The 1/2" inch Wirsbo Quik Trak plywood panels are attached to an aluminum heat transfer sheet
- Quik Trak sealant is 100% silicone and adheres to PEX tubing in the Quik Trak groove to provide good thermal transfer (Approx. 1 bottle should be used for each loop)



SKU	Description
A5060701	Quik Trak 7" x 48" Trak
A5060702	Quik Trak 7" x 48" Return Trak
E6050010	Quik Trak Sealant



Joist Trak Panels

- Excellent heat transfer through thick aluminum alloy panels
- Panels are attached beneath the wood subfloor in radiant heat systems
- When installing Joist Trak, leave 1"-2" between panels

SKU	Description
A5080500	Wirsbo Joist Trak 1/2" Heat Transfer Panel

Radiant Heat Controls

- These devices control the flow of water in a radiant heat system
- This radiant heat thermostat has differential settings and pulse-width modulation
- Four-wire slow-opening thermal actuator (24VAC) mounts directly onto 1-1/4" brass and TruFLOW valved manifolds
- The motorized valve actuator features a quick-opening motorized valve head that mounts directly onto 1-1/4" brass and TruFLOW valved manifolds



SKU	Description
A3030101	Wirsbo Radiant Thermostat (WT 1), Heat-Only, Two-Wire
A3010522	Thermal Actuator, Four-Wire
A3020522	Motorized Valve Actuator (MVA), Four-Wire

ProPEX Tools & Fittings

The ProPEX System may only be used with PEX-a tubing, including AquaPEX, hePEX (both manufactured by Uponor), and ThermaPEX. This is because PEX-a is the most flexible tubing and will shrink back to size after it is expanded to create a secure fitting.

- **The Expander Tool requires ProPEX fittings & rings**
- **The Cinch Clamp Tool requires Rifeng fittings & stainless steel clamps**
- **The Viega Press Tool requires PEX press fittings & PEX press sleeves**
- **The Crimp Tool requires Rifeng crimp fittings & copper crimp rings**



ProPEX Expansion Tool

The ProPEX Expansion Tool, manufactured by Milwaukee, features a built-in auto rotate mechanism for easy one-handed use, an LED light to illuminate the work space in dark locations, and a battery fuel gauge that displays remaining run time. The tool has a compact right angle design for use in tight locations and is built with a durable all-metal frame and gears. ProPEX Rings are manufactured from PEX-a material and are available in 3/8", 1/2", 5/8", 3/4" and 1". Rings are required to make a proper ProPEX connection and work only with the ProPEX Expander Tool and PEX-a Tubing.

SKU	Description
2432-20	M12 ProPEX Expansion Tool (Tool Only)
2432-22	M12 ProPEX Expansion Tool Kit (w/ 3/8" - 1" heads)
2632-22	M18 ProPEX Expansion Tool Kit (w/ 1" - 1 1/2" heads)
Q4690512	ProPEX Ring with Stop 1/2"
Q4690756	ProPEX Ring with Stop 3/4"
Q4691000	ProPEX Ring with Stop 1"



ProPEX EP & Brass Fittings

These ProPEX expansion style fittings are manufactured by Uponor (Wirsbo). They are widely used throughout the US and Europe for PEX connections. Each connection requires the use of a ProPEX Expansion Tool and a ProPEX ring.

SKU	Description
Q4760500	ProPEX EP Elbow 1/2" PEX x 1/2" PEX
Q4760750	ProPEX EP Elbow 3/4" PEX x 3/4" PEX
Q4761000	ProPEX EP Elbow 1" PEX x 1" PEX
Q4775050	ProPEX EP Coupling 1/2" PEX x 1/2" PEX
Q4777575	ProPEX EP Coupling 3/4" PEX x 3/4" PEX
Q4771010	ProPEX EP Coupling 1" PEX x 1" PEX
Q4755050	ProPEX EP Tee, 1/2" PEX x 1/2" PEX x 1/2" PEX
Q4757575	ProPEX EP Tee, 3/4" PEX x 3/4" PEX x 3/4" PEX
Q4751010	ProPEX EP Tee 1" PEX x 1" PEX x 1" PEX
LF4525050	ProPEX Male Adapter 1/2" PEX x 1/2" PEX NPT
LF4527575	ProPEX Male Adapter 3/4" PEX x 3/4" PEX NPT
LF4521010	ProPEX Male Adapter 1" PEX x 1" PEX NPT
LF4575050	ProPEX Female Adapter 1/2" PEX x 1/2" PEX NPT
LF4577575	ProPEX Female Adapter 3/4" PEX x 3/4" PEX NPT
LF4571010	ProPEX Female Adapter 1" PEX x 1" PEX NPT
LF4515050	ProPEX Pipe Adapter 1/2" PEX x 1/2" PEX
LF4517575	ProPEX Pipe Adapter 3/4" PEX x 3/4" PEX
LF4511010	ProPEX Pipe Adapter 1" PEX x 1" PEX

PEX Crimp Tools & Fittings



Rifeng Crimp Tool Kit

The Rifeng Crimp Tool makes connections for 3/8", 1/2", 5/8" and 3/4" PEX tubing with black copper rings. The complete PEX Tool Kit includes the Crimp Tool with the four jaw set sizes, adjustment tools, a "go/no-go" gauge to test your fittings, and a rugged tool case.

SKU	Description
CRIMPTOOL	3/8" - 3/4" PEX Crimp All Tool Kit
HCRIMP03	3/8" PEX Crimp Ring
HCRIMP05	1/2" PEX Crimp Ring
HCRIMP06	5/8" PEX Crimp Ring
HCRIMP07	3/4" PEX Crimp Ring
HCRIMP10	1" PEX Crimp Ring



PEX Clamp Tool & Stainless Steel Rings

The Clamp Tool makes connections for 3/8", 1/2", 5/8" and 1" PEX tubing with stainless steel clamp rings. This a great option for one-time jobs. (Note: Rings are only sold only in bags.)

SKU	Description
CLAMPTOOL	PEX Ratchet Clamp Tool
HCL0375	3/8" Stainless Steel Clamp
HCL0500	1/2" Stainless Steel Clamp
HCL0625	5/8" Stainless Steel Clamp
HCL0750	3/4" Stainless Steel Clamp
HCL1000	1" Stainless Steel Clamp



Rifeng PEX Crimp Fittings

- Meet ASTM F1087 standards
- Designed for PEX plumbing & radiant heat systems
- Can be used with the stainless steel clamping system or the copper crimp ring system
- Can be used with AquaPEX, hePEX, ThermaPEX, Zurn PEX, Watts PEX and ViegaPEX tubing
- Other available fittings include: tees, copper pipe adapters, male and female threaded adapters, drop ear elbows and plugs

SKU	Description
H000500	1/2" PEX x 1/2" PEX Brass Elbow
H000750	3/4" PEX x 3/4" PEX Brass Elbow
H001000	1" PEX x 1" PEX Brass Elbow
H010500	1/2" PEX x 1/2" PEX Brass Coupling
H010750	3/4" PEX x 3/4" PEX Brass Coupling
H011000	1" PEX x 1" PEX Brass Coupling
H020500	1/2" PEX x 1/2" Copper Pipe Brass Adapter
H020750	3/4" PEX x 3/4" Copper Pipe Brass Adapter
H021000	1" PEX x 1" Copper Pipe Brass Adapter
H030500	1/2" PEX x 1/2" NPT Brass Male Adapter
H030750	3/4" PEX x 3/4" NPT Brass Male Adapter
H031000	1" PEX x 1" NPT Brass Male Adapter
H040500	1/2" PEX x 1/2" NPT Brass Female Adapter
H040750	3/4" PEX x 3/4" NPT Brass Female Adapter
H041000	1" PEX x 1" NPT Brass Female Adapter

Other Tools & Fittings



SharkBite Push-Fit Fittings (Lead Free)

- No tool required
- Certified to 200 psi and 200°F
- Fits OD controlled copper, CPVC and PEX pipe
- Body composed of solid DZR brass
- Available in boxes

SKU	Description
U008LF	1/2" x 1/2" SharkBite Coupling
U016LF	3/4" x 3/4" SharkBite Coupling
U248LF	1/2" x 1/2" SharkBite Elbow
U260LF	1" x 1" SharkBite Elbow
U362LF	1/2" x 1/2" x 1/2" SharkBite Tee
U370LF	3/4" x 3/4" x 3/4" SharkBite Tee
U120LF	1/2" x 1/2" Pipe to Male Pipe Thread Connector
U072LF	1/2" x 1/2" Pipe to Female Pipe Thread Connector
22222-0000LF	1/2" SharkBite Ball Valve
22185-0000LF	3/4" SharkBite Ball Valve



PEX-to-Wood Attachment Tools & Clips

Peter Mangone clip guns allow for fast and easy attachment of PEX tubing to wood in a radiant heat or plumbing application or to the top of a subfloor.

SKU	Description
RB-5	Manual Clip Gun
RB-6	Pneumatic Clip Gun
P4BK	Box of 100 Stand-off-clips for 1/2" PEX
P6BK	Box of 100 Stand-off-clips for 3/4" PEX



PEX Tubing Cutters

There are three types of tube cutters available from Uponor (Wirsbo). These plastic, ratchet-style and metal tube cutters cut up to 1" PEX. Cutters for larger tubing are available online.

SKU	Description
E6081128	Plastic Tube Cutter up to 1" PEX
E6081501	Ratchet-Style Tube Cutter, up to 1" PEX
E6081125	Metal Tube Cutter, up to 1" PEX



Viega PEX Press Connection Tools

Viega press sleeves are required to make press connections.

SKU	Description
50020	PEX Press Tool, 1/2" yellow
50040	PEX Press Tool, 3/4" blue
50060	PEX Press Tool, 1" orange
56000	Starter PEX Press Tool Set (1/2" & 3/4" Press Tools)
61020	1/2" PEX Press Sleeves (Bag of 100)
61040	3/4" PEX Press Sleeves (Bag of 100)
61060	1" PEX Press Sleeves (Bag of 100)

Boilers



Weil McLain Ultra Boilers

- Gas-fired water boiler
- Cast aluminum heat exchanger
- Venturi mixing body mixes air and gas, increasing efficiency
- Designed to operate in low-temperature condensing applications
- Comes standard w/outdoor reset and domestic hot water priority
- 93% AFUE rating

SKU	Description
383-500-700	Ultra 80 - 62,000 BTU Output High Efficiency Boiler (Nat Gas)
383-500-701	Ultra 80 - 62,000 BTU Output High Efficiency Boiler (Propane)
383-500-702	Ultra 105 - 81,000 BTU Output High Efficiency Boiler (Nat Gas)
383-500-703	Ultra 155 - 123,000 BTU Output High Efficiency Boiler (Nat Gas)
383-500-704	Ultra 230 - 183,000 BTU Output High Efficiency Boiler (Nat Gas)



Weil McLain CGA Boilers

- Standing pilot, natural gas & water models
- Control module and ignition control
- Diagnostic indicator lights
- Gas-fired water boiler w/cast iron sections
- Compact design
- Stainless steel burners for quieter ignition and improved combustion
- Accessible controls, vertical flueways top-cleaning for easy & quick servicing
- 83% AFUE rating

SKU	Description
381-357-802	CGA-25 Gas Boiler, Standing Pilot, 38,000 BTU
381-357-804	CGA-3 Gas Boiler, Standing Pilot, 51,000 BTU
381-357-806	CGA-4 Gas Boiler, Standing Pilot, 77,000 BTU
381-357-808	CGA-5 Gas Boiler, Standing Pilot, 102,000 BTU
381-357-800	CGA-6 Gas Boiler, Standing Pilot, 127,000 BTU



Triangle Tube Prestige Boilers

The Prestige is a wall-mounted boiler with the capability to modulate the firing rate to 25% of its rated input. This modulation means fewer cycles, resulting in lower operating costs.

- Stainless steel heat exchanger
- 95% AFUE rating

SKU	Description
PT110LP	76,000 BTU Output Prestige Solo Boiler
PT110	86,000 BTU Output Prestige Solo Boiler
PT60	47,000 BTU Output Prestige Solo Boiler
PT110LP	76,000 BTU Output Prestige Solo Boiler
PT175	134,000 BTU Output Prestige Solo Boiler
PT250	194,000 BTU Output Prestige Solo Boiler
PSNEU01	Condensate Neutralizer Kit For Prestige Solo Boiler



Burnham Alpine Boilers

The Alpine's cast iron construction and unique condensing design ensures maximum heat transfer as water flows through a series of stainless steel coils that capture heat from the combustion chamber.

- Stainless steel heat exchanger
- 95% AFUE rating

SKU	Description
101867-01	Condensate Neutralizer Kit for Burnham Alpine Boiler

Honeywell Thermostats

We have the best prices on the web for these thermostats. They are in stock and ready to ship the same day for orders placed before 1pm EST.



Why Programmable?

- Don't worry about adjusting your thermostat anymore!
- Customize your settings to maximize efficiency based on your schedule.
- Save energy while you're at work or sleeping.
- Start warming the home an hour before you wake up or return from work for maximum comfort.



VisionPRO 8000 Series

- 7-day programmable
- Large touchscreen display
- Automatically updates for daylight savings
- Maintains clock & programming settings in the event of a power failure
- Accurate within 1 degree

SKU	Description
TH8110U1003	VisionPRO Thermostat (1 Heat-1 Cool)
TH8321U1006	VisionPRO Programmable, 2H/2C, Touchscreen & Dehumid Control
TH8320U1008	VisionPro Programmable, 2H/2C, Touchscreen Thermostat)
TH8321U1097	VisionPRO Thermostat (2 Heat-2 Cool)
TB8220U1003	Commercial VisionPRO Thermostat



Sensors & Covers

SKU	Description
C7089U1006	VisionPRO Outdoor Temperature Sensor
C7189U1005	VisionPRO Remote Indoor Sensor
32003796-001	Premier White Cover Plate for VisionPRO Thermostats



FocusPRO Series

- Largest backlit screen in its class
- Easy-to-read digital display
- Push-button programming
- Accurate within 1 degree

SKU	Description
TH6110D1005	FocusPRO Programmable Thermostat (1H/1C)
TH6110D1021	FocusPRO Programmable Thermostat (1H/1C Lg. Display)
TH5110D1006	FocusPRO Non-Programmable Thermostat (1H/1C)
TH5110D1022	FocusPRO Non-Programmable Thermostat (1H/1C Lg. Display)
TH6220D1002	FocusPRO Programmable Thermostat (2H/2C)



Honeywell Round Thermostats

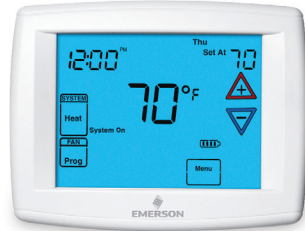
The T87 round Honeywell thermostat is affordable, reliable, and has been keeping homes comfortable for over 50 years.

SKU	Description
T8775C1005	Round Non-Programmable, 1H/1C, Digital Thermostat
T8775A1009	Round Non-Programmable, Heat Only, Digital Thermostat



ATTENTION CONTRACTORS...
 Visit our site to see
Special Box Prices!

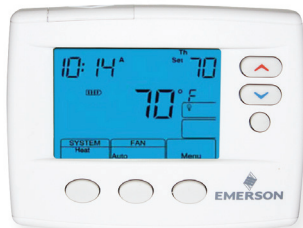
Other Thermostats



White-Rodgers 90 Series Blue Touchscreen Thermostats

- 7-day programmable
- Easy-to-read, easy-to-program
- Touchscreen security settings to limit access
- Temporary and vacation override
- Automatic reminders to change air filters

SKU	Description
1F95-1277	Universal Staging, 7-Day or 5+1+1 Day Programmable Thermostat, 24 Volt or Millivolt System (Blue Screen)
1F95-1291	Universal Staging, 4 Heat/2 Cool 7-Day or 5+1+1 Day Thermostat, Humidity/Dehumidity Control, 24 Volt or Millivolt System (Blue Screen)
1F97-1277	7-Day or 5+1+1 Day Programmable Thermostat, 24 Volt or Millivolt System (Blue Screen)
F145-1378	Outdoor Remote Sensor (for 90 Series Thermostats)



White-Rodgers 80 Series Push-Button Thermostats

- Programs saved during power loss
- Long battery life with a battery power monitor soft key push-button interface
- Hard-wired or battery powered with battery power monitor
- Accurate within 1 degree

SKU	Description
1F80-0471	Single Stage, 5+1+1, 5+2 Day Programmable or Non-Programmable Thermostat, 24 Volt or Millivolt System (Blue Screen)
1F86-0471	Single Stage, Non-Programmable Thermostat 24 Volt or Millivolt System (Blue Screen)
1F80-361	5+1+1 Day Programmable Thermostat, Hardwired or Battery Powered
1F85-277	7-Day or 5+1+1 Day Programmable or Non-Programmable Thermostat, 24 Volt or Millivolt System

Other Thermostats & Controls

Brand	Common Uses	Top Seller
RobertShaw Thermostats	Residential Thermostats	RS3110 970112
Lux Thermostats	Residential Thermostats	PSP511LC TX9000TS
Totaline Thermostats	Residential Thermostats	P330-1220
Tekmar	Radiant Heat; Web-based system control capabilities	509
Wirsbo Radiant Thermostats	Radiant Heat	A3030101
Johnson Controls	Single- or Multi-stage applications, i.e. heat pumps, unitary roof-top equipment with economizers, cabinet unit heater, perimeter heating/cooling, zoning and fan coil units.	A419ABC-1C A419GBF-1C
Braeburn Thermostats	Residential, economy thermostat Premier Series programmable thermostat	1000NC 5220
BAYweb Network Thermostats	Residential or commercial; accessible anytime, and anywhere access via the internet or web-enabled mobile phones.	BW-WT1-W BW-WT2-B

Circulator Pumps

We stock all the popular Taco circulator pumps including the industry standard 007-F5.

- **This page lists our popular cast iron pumps**
- **Stainless steel and bronze circulator pumps are also available as listed on our website**
- **Bronze pumps are typically used in open systems where all non-ferrous components are required because they are more resistant to rust and corrosion than cast iron pumps are.**



Taco Pumps

Taco circulator pumps have been an industry standard for years. They are self-lubricating and built with a high capacity output design.

SKU	Description
005-F2	005 Cast Iron Circulator
007-F5	007 Cast Iron Circulator
009-F5	009 Cast Iron Circulator
0011-F4	0011 Cast Iron Circulator
0012-F4	0012 Cast Iron Circulator (HV Equivalent)
0012-F4-1	0012 Cast Iron Circulator (2" Equivalent)
0013-F3	0013 Cast Iron Circulator
0014-F1	0014 Cast Iron Circulator
007-F5-IFC	007 Cast Iron Circulator with Integral Flow Check
00R-MSF1-IFC	00R 3-Speed Cast Iron Circulator with Integral Flow Check
HEC-2	Bumble Bee Variable Speed Circulator with Integral Flow Check

*Other IFC models are listed on our website



Grundfos Pumps

Grundfos Series UP circulator pumps feature a ceramic shaft, a steel motor can and bearing plate, and an impeller in corrosion-resistant material.

SKU	Description
59896341	UPS15-58FC, 115 Volt, 3-Speed Suber Brute Circulator
59896343	UPS15-58FRC, 115 Volt, 3-Speed Rotated Flanged Circulator Pump
59896155	UP15-42F, 115 Volt, 1/25 HP Circulator Pump
52722513	UPS26-99FC, 230 Volt, 1/6 HP Circulator Pump



Bell & Gossett Pumps

Bell & Gossett Series 100 circulator pumps provide dependable operation and require minimal annual lubrication.

SKU	Description
103251	NRF-22, 1/25 HP, Red Fox Circulator Pump
106189	Series 100 Cast Iron Circulating Pump



Wilo Pumps

Wilo Star pumps are built for durability and efficiency, featuring a stainless steel motor shaft and exclusive motor cam.

SKU	Description
4105032	Star S 21F, 1/12 HP, 3-Speed Cast Iron Star Series Circulator
4090768	Star 21FX, 1/12 HP, 1-Speed Cast Iron Star Series Circulator

We have flanges available for all pumps available on our website, including cast iron and bronze flanges in several sizes.



Aquastats, Zone Valves & Mixing Valves

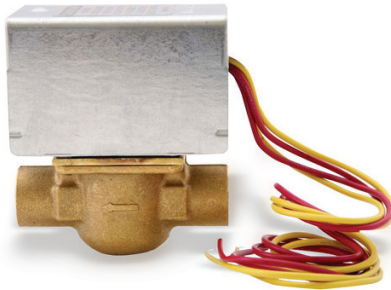


Taco 570 Zone Valves

Taco's 570 Gold Series zone valves feature an open lever and twist-off head that makes installation and service easy. They are available in 1/2" – 1-1/4" sweat connections.

- Quiet and dependable operation
- Easy installation & service

SKU	Description
571-2	3/4" 571 Sweat Zone Valve
572-2	1" 572 Sweat Zone Valve
555-050RP	Zone Valve Power Head



Honeywell Zone Valves

Honeywell zone valves have a unique ball seal that ensures a new sealing surface every time the valve operates. They are available in a range of models to meet all system requirements.

- Designed for hydronic heating systems
- 2-way on/off low voltage

SKU	Description
V8043E1004	1/2" Sweat Zone Valve (Connection = 18" Leads)
V8043E1012	3/4" Sweat Zone Valve (Connection = 18" Leads)
V8043E1020	1" Sweat Zone Valve (Connection = 18" Leads)



Taco Mixing Valves

Taco mixing valves have set new standards for performance and serviceability in the industry. They provide reliable, flexible control throughout your system.

- High flow/low headloss
- Ideal for domestic water and radiant heat applications

SKU	Description
5002-C2	1/2" Sweat 5002 Mixing Valve
5003-C2	3/4" Sweat 5002 Mixing Valve
5004-C2	1" Sweat 5002 Mixing Valve



Honeywell Aquastats

Aquastats are commonly used in hydronic heating systems and plumbing systems for controlling water temperature. They have high and low temperature limits, which ensure efficiency and safety by preventing the heat source (i.e. boiler) from firing too often.

- Large selection
- Competitive prices
- High quality, reliable brand

SKU	Description
L6006C1018	High/Low Limit & Circ. Strap-On, 65-200°F range, 5-30°F Adj. Differential
L8148A1017	High Limit Horizontal Mount Relay, 8°F differential
L4006A1967	High/Low Limit 100-240°F range, 5-30°F Adj. Differential
L4006E1091	High Limit, 130-270°F range, Manual Reset
L8148E1265	High Limit Vertical Mount Relay, 15°F differential
L4006A2007	High/Low Limit Aquastat, 100-240°F range, 5-30°F Adj. Differential
L6006A1145	High/Low Limit & Circ. Horizontal Mount, 100-240°F range, 5-30°F Adj. Differential

Baseboard Heaters



Fine/Line 30A Baseboard

Fine/Line 30A is ideal for high quality installations in homes, apartments and many light commercial applications, providing gentle full room convection heating that blocks drafts from the outside walls. This line features a high performance heating element, a super strong galvanized steel enclosure with rust-resistant Nu-White enamel finish, and high quality accessories. Fine/Line 30A baseboard is manufactured in lengths up to 14 ft. and is shipped fully assembled for fast, easy installation.

SKU	Description
101401020	2' 30A Fine/Line Baseboard
101401030	3' 30A Fine/Line Baseboard
101401040	4' 30A Fine/Line Baseboard
101401050	5' 30A Fine/Line Baseboard
101401060	6' 30A Fine/Line Baseboard
101401070	7' 30A Fine/Line Baseboard
101401080	8' 30A Fine/Line Baseboard



Base/Line 2000 Baseboard

Base/Line 2000 is ideal for heating in tract housing, apartments and renovations. It provides gentle full room convection heating that blocks drafts from the outside walls. It is manufactured with contractor-friendly features for quick, trouble free installation. It features a strong enclosure, high strength support brackets, no-noise expansion cradles, a fully modulating damper to control individual room temperatures, a high performance heating element and precision accessories. It comes in a Nu-White baked enamel finish and is fully assembled, ready for box-to-wall installation.

SKU	Description
104002020	2' Baseline 2000 Baseboard (3/4")
104002030	3' Baseline 2000 Baseboard (3/4")
104002040	4' Baseline 2000 Baseboard (3/4")
104002050	5' Baseline 2000 Baseboard (3/4")
104002060	6' Baseline 2000 Baseboard (3/4")
104002070	7' Baseline 2000 Baseboard (3/4")
104002080	8' Baseline 2000 Baseboard (3/4")



Runtal Baseboard

Runtal is a great option whether your project is a one radiator renovation or a whole house installation. These units carry a 5-year warranty and can be simply mounted onto the wall. Uniform fittings allow each radiator to be piped in eight different ways. Runtal Baseboard comes in white or can be special ordered by our Customer Service Team in other standard colors, such as cream white.

SKU	Description
UF-2-24	6" x 24" (2 ft.) Baseboard Radiator 1200 BTUH
UF-2-48	6" x 48" (4 ft.) Baseboard Radiator 2400 BTUH
UF-3-30	9" x 30" (2.5 ft.) Baseboard Radiator 1925 BTUH
UF-4-36	12" x 36" (3 ft.) Baseboard Radiator 2790 BTUH
UF-4-72	12" x 72" (6 ft.) Baseboard Radiator 5580 BTUH
UF-6-36	18" x 36" (3 ft.) Baseboard Radiator 4290 BTUH

Expansion Tanks & Air Valves



Expansion Tanks

Expansion tanks are designed for use in commercial and residential closed loop hydronic heating systems. They control the thermal expansion of hot water and maintain system pressure below the relief setting of the relief valve.

EXTROL Tanks

Amtrol designed the first expansion tank in 1954 and is now a market leader. EXTROL has become the world's leading expansion tank with its pre-pressurized technology. It has a unique diaphragm design that will not stretch or fold and maintains a closed system for optimal efficiency and longevity.

SKU	Description
101-1	#15 EXTROL Expansion Tank (2 Gallon Volume)
102-1	#30 EXTROL Expansion Tank (4.4 Gallon Volume)
103-1	#60 EXTROL Expansion Tank (7.6 Gallon Volume)
112-1	#90 EXTROL Expansion Tank (14 Gallon Volume)

FILL-TROL Tanks

The AMTROL FILL-TROL system consists of a specially adapted EXTROL pre-pressurized, diaphragm-type expansion tank, and the FILL-TROL automatic, fill valve.

SKU	Description
109-9	Model 109 FILL-TROL w/ Valve (2 Gallon Volume)
110-1	Model 110 FILL-TROL w/ Valve (4.4 Gallon Volume)

Radiant EXTROL Tanks

Radiant EXTROL tanks are specifically designed for high-efficiency radiant systems. They come with a plastic liner and are compatible with barrier and non-barrier systems. The radiant EXTROL tanks are suitable for use in glycol applications and offer a non-ferrous system connection for corrosion resistance.

SKU	Description
140-705	RX-15 Radiant EXTROL Expansion Tank (2 Gallon Volume)
141-305	RX-30 Radiant EXTROL Expansion Tank (4.4 Gallon Volume)

Hoffman Air Valves

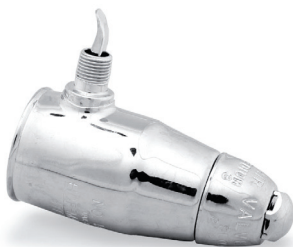
Hoffman Air Valves are designed for use in steam heating systems. The most popular models of the Hoffman Air Valves are the Hoffman 1A Air Valve and the Hoffman 40 Air Valve.

SKU	Description
401422	1A Adjustable Angle Air Valve
401440	#40 Angle Air Valve
401455	#41 Straight Air Valve
401458	#43 1/4" Straight Air Valve
401461	#45 3/4" x 1/2" Straight Air Valve

Spirovent Junior Air Eliminators

Spirovent Junior air eliminators remove air from your system, which saves energy and improves overall system performance and heat transfer. This helps to make sure the fluid is distributed evenly and protects your system components.

SKU	Description
VJR075	3/4" Spirovent Jr. Air Eliminator (Threaded)
VJR100	1" Spirovent Jr. Air Eliminator (Threaded)
VJR125	1-1/4" Spirovent Jr. Air Eliminator (Threaded)
VJR150	1-1/2" Spirovent Jr. Air Eliminator (Threaded)



Water Heaters



Weil McLain Indirect Water Heaters

These heaters feature a tank-within-a-tank design, a corrugated stainless steel inner tank, a steel outer tank and a negligible stand-by loss of less than 1/2° F per hour. The square surface of the heat exchanger increases with capacity, allowing it to outperform coil tanks, which use the same size coil regardless of capacity. These units also feature a unique self-cleaning design that resists liming.

SKU	Description
633-500-001	Ultra Plus 40 Indirect Water Heater
633-500-002	Ultra Plus 60 Indirect Water Heater
633-500-000	Gold Plus 30 Indirect Water Heater
633-500-008	Gold Plus 40 Indirect Water Heater
633-500-003	Gold Plus 80 Indirect Water Heater



Bradford White Residential Water Heaters

These boilers are rugged, durable and known for their high output. Their patented Defender Safety System technology drastically reduces carbon monoxide emissions and the chance of fire.

SKU	Description
M-4-5036FBN	50 Gallon - 40,000 BTU Defender Safety System High EF Residential Water Heater (Nat Gas)
M-I-5036FBN	50 Gal. 40,000 BTU Defender Safety System Atmospheric Vent Energy Saver Residential Water Heater (Nat Gas)
M-I-40T6FBN	40 Gal. 40,000 BTU Defender Safety System Atmospheric Vent Energy Saver Residential Water Heater (Nat Gas)



AO Smith Residential Water Heaters

- ProMax heaters help lower your energy bills and have innovative C3 Safety Technology that protects against accidental ignition of flammable vapors.
- Vertex power-vent and power direct-vent gas heaters offer up to 96% thermal efficiency with performance that rivals much larger heaters.

SKU	Description
GDHE-50-NG	50 Gal. 100,000 BTU Vertex 100 Power Direct Vent Residential Gas Water Heater (Nat Gas)
GPHE-50	50 Gal. 76,000 BTU Vertex Power-Vent Residential Gas Water Heater
GDHE-50-LP	50 Gal. 100,000 BTU Vertex 100 Power Direct Vent Residential Gas Water Heater (LP Gas)
EJCS-20	19 Gal. ProMax Compact Residential Electric Water Heater
GCV-50	50 Gal. ProMax 6 Yr. Warranty Residential Gas Water Heater Tall Model

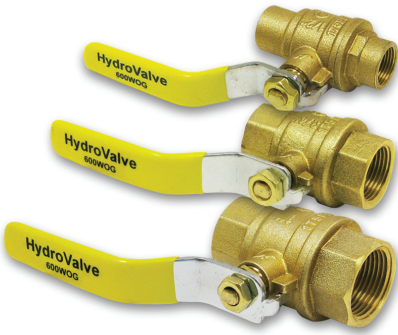


Takagi Tankless Water Heaters

Takagi tankless water heaters provide hot water on demand. They heat your water only as it is needed, which saves energy. All the heaters listed below are natural gas units; propane models are available on our website.

SKU	Description
T-KJr2-IN-NG	T-KJr2-IN Takagi Tankless Indoor Water Heater
T-KJr2-OS-NG	T-KJr2-OS Takagi Tankless Outdoor Water Heater
T-K4-IN-NG	TK-4-IN Takagi Tankless Indoor Water Heater
T-K4-OS-NG	TK-4-OS Takagi Tankless Outdoor Water Heater
T-D2-IN-NG	T-D2-IN Takagi Tankless Indoor Water Heater
T-D2-OS-NG	T-D2-OS Takagi Tankless Outdoor Water Heater

Plumbing Specialties



Ball Valves

HydroValve 600 WOG full port brass ball valves feature a chrome-plated ball, yellow plastic sleeve, and a blowout-proof stem. Threaded and solder ends are available.

SKU	Description
HV050T	1/2" Full Port Threaded Ball Valve
HV075T	3/4" Full Port Threaded Ball Valve
HV100T	1" Full Port Threaded Ball Valve
HV050S	1/2" Full Port Sweat Ball Valve
HV075S	3/4" Full Port Sweat Ball Valve
HV100S	1" Full Port Sweat Ball Valve



Chemicals & Compounds

We have all the common products you need to get the job done. Visit our website to see our full selection of soldering paste, cements, sealants, caulk, primer, putty, tape and cleansers.

SKU	Description
15164	TFE Pipe Joint Tape
10619	9 oz. Climate Smooth Soldering Paste
OE2	Orange-Eco Paste Flux (2 oz.)
50400	5-3/4" Solder Flux & Acid Brush
15615	Real Tuff Thread Sealant - 1/4 pt.
POLYTAPE	Poly Tape (Indoor/Outdoor Use)



THERM-X-TROL Expansion Tanks

THERM-X-TROL tanks keep water pressure at a safe level, preventing relief valve discharge and other potentially unsafe conditions. These tanks satisfy manufacturers requirements for expansion control devices in domestic supply lines.

- *Stainless steel system connections*
- *Molded, polypropylene liner for maximum corrosion resistance*
- *NSF 61 approved*
- *Meets CA and VT low lead laws*

SKU	Description
140N43	THERM-X-TROL ST-5 Expansion Tank
141N43	THERM-X-TROL ST-12 Expansion Tank
140735	THERM-X-SPAN T-5 Expansion Tank (2 Gallon Volume)

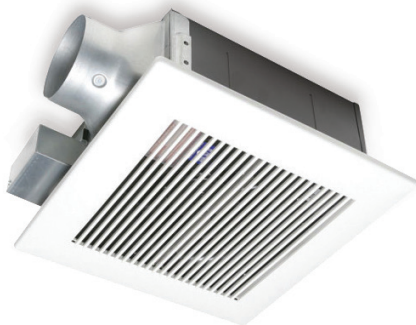
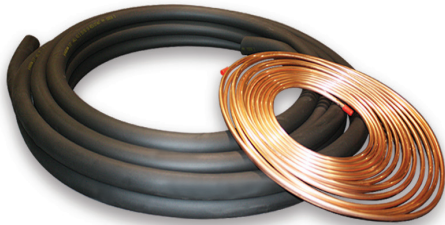
Ox Box Outlet Boxes

- *Outlet boxes separate supply and drainage systems into two stud bays*
- *Boxes mount securely to stud*
- *Separate boxes offer flexible layout*
- *Durable ABS stands up to job site abuse*
- *Drain knockout is easy to remove with pliers*
- *Debris covers are included to protect boxes from drywall, mud and paint*
- *High-quality quarter-turn ball valves*
- *3/4" male hose-thread outlet connections*



SKU	Description
696-2313MF	Ox Box Washing Machine Outlet Box
696-2001MF	Ox Box Lavatory Outlet Box
696-1001MF	Ox Box Toilet/Dishwasher Outlet Box
696-1000MF	Ox Box Ice Maker Outlet Box

HVAC



LG Mini-Split Air Conditioners

Cool your home with LG's attractive, wall-mounted units, which are effective, economical, and quiet. The lightweight indoor section of the LG Ductless Air Conditioner simply mounts on the wall and connects to the outdoor unit through the wall.

SKU	Description
LSN122HE	11,500 BTU Ductless Single Zone Heat Pump & AC - Indoor Unit
LAN126HNP	11,500 BTU Art Cool Picture Frame Ductless Single Zone AC/Heat Pump - Indoor Unit
LSU122HE	11,500 BTU Ductless Single Zone Heat Pump & AC - Outdoor Unit
LMN096HVT	9,000 BTU Ductless Multi-Split AC/Heat Pump - Indoor Unit (Compatible w/ Wired Wall Thermostat)
LMN126HVT	12,000 BTU Ductless Multi-Split AC/Heat Pump - Indoor Unit (Compatible w/ Wired Wall Thermostat)
LMU247HV	24,000 BTU 3-Zone Multi-Split AC/Heat Pump - Outdoor Unit

Panasonic Mini-Split Air Conditioners

Panasonic ductless mini-split air conditioners have a unique design that operates quietly while cooling your home. Indoor units can be wall or ceiling-mounted. They are available in a variety of colors and finishes to compliment any décor.

SKU	Description
E12NKUA	11,900 BTU Wall-Mounted 1-Zone Mini-Split AC Package (Heat Pump)
E18NKUA	17,100 BTU Wall-Mounted 1-Zone Mini-Split AC Package (Heat Pump)
CS-MKS12NKU	11,900 BTU Ductless Mini-Split AC Indoor Unit
CS-MKS9NKU	9,000 BTU Ductless Mini-Split AC Indoor Unit
CS-MKS7NKU	7,500 BTU Ductless Mini-Split AC Indoor Unit
CS-S12NKUW-1	11,900 BTU Wall-Mounted Ductless Mini-Split AC Indoor Unit (Cool Only)
CS-S22NKU-1	21,000 BTU Wall-Mounted Ductless Mini-Split AC Indoor Unit (Cool Only)

Line Sets

Flared refrigerant line sets are required for every mini-split system to connect the indoor and outdoor units. We carry a large selection of sizes and lengths.

SKU	Description
LS143850F	1/4" LL x 3/8" SL x 50 ft. Refrigerant Line Set for Mini-Split, Flared
LS143825F	1/4" LL x 3/8" SL x 25 ft. Refrigerant Line Set for Mini-Split, Flared
LS143815F	1/4" LL x 3/8" SL x 15 ft. Refrigerant Line Set for Mini-Split, Flared
LS143835F	1/4" LL x 3/8" SL x 35 ft. Refrigerant Line Set for Mini-Split, Flared
LS141225F	1/4" LL x 1/2" SL x 25 ft. Refrigerant Line Set for Mini-Split, Flared

Panasonic Ventilation Fans

Panasonic offers a wide range of powerful ventilation fans featuring contemporary flush-mount grilles and ultra-quiet operation. Select models are ENERGY STAR-rated.

SKU	Description
FV-08VQ5	WhisperCeiling 80 CFM Ceiling Ventilation Fan
FV-11VQ5	WhisperCeiling 110 CFM Ceiling Ventilation Fan
FV-08WQ1	WhisperWall 70 CFM Through-the-Wall Ventilation Fan
FV-08VF2	WhisperFit 80 CFM Ceiling Ventilation Fan
FV-11VF2	WhisperFit 110 CFM Ceiling Ventilation Fan
FV-10VS1	WhisperValue 100 CFM Super Low Profile Ceiling/Wall Ventilation Fan
FV-11VH2	WhisperWarm 110 CFM Ceiling Ventilation Fan/Heater
FV-11VHL2	WhisperWarm 110 CFM Ceiling Ventilation Fan/Heater & Light

HVAC



Fantech Exhaust Fans

Fantech manufactures innovative residential and commercial ventilation products designed to solve air movement problems and improve indoor air quality in homes and buildings.

SKU	Description
FR100	FR Series Round Inline Exhaust Fan, 4" Duct (137 CFM)
FR150	FR Series Round Inline Exhaust Fan, 6" Duct (263 CFM)
FG6	FG Series Round Inline Exhaust Fan, 6" Duct (303 CFM)
DBF4XLT	Dryer Booster Exhaust Fan w/ FG4XL Fan
DBF110	Dryer Booster Exhaust Fan w/ FR110 Fan



Honeywell TrueSTEAM Humidifiers

The Honeywell TrueSTEAM direct-injection humidifier provides the high performance and efficiency of steam humidification with easier maintenance than traditional humidifiers. It also requires less water, reducing usage up to 70% compared to flow-through humidifiers.

SKU	Description
HM512H8908	TrueSTEAM 12-gallon Humidifier with H8908 Manual Humidity Control
HM509H8908	TrueSTEAM 9-gallon Humidifier w/ H8908 Manual Humidistat
DG115EZIAQ	TrueIAQ Digital IAQ Control w/ Outdoor Sensors
HM506H8908	TrueSTEAM 6-gallon Humidifier w/ H8908 Manual Humidistat
DR65A2000	TrueDRY DR65 65-pint Whole House Dehumidifier
HM512VPIAQ	TrueSTEAM 12-gallon Humidifier w/ VisionPRO IAQ Control



DiversiTech Condensate Removal Pumps

These DiversiTech pumps are designed for use with condensate from high efficiency condensing furnaces and boilers which produce acidic condensate. They have colored indicator lights to show the pump status and a pan tablet dispenser included free with every pump.

- Shatterproof stainless steel hang tabs
- Rubber feet to dampen vibration
- Four inlets versus two or three on other pumps
- Removable check valve for easy cleaning

SKU	Description
CP-22	DiversiTech Condensate Pump, 120V
CP-22T	DiversiTech Condensate Pump, 120V with 20' 3/8" Tube
CP-16	DiversiTech Economy Condensate Pump (120V, 16' Lift)



Little Giant Condensate Removal Pumps

The VCMA Series is Little Giant's newest generation of condensate removal pumps. These are vertical units, which are suitable for high-efficiency gas furnace condensate. They feature a stainless steel motor shaft and a built-in check valve. They also have a 1/2 gallon leakproof, rustproof, ABS tank with mounting tabs.

554405	Little Giant VCMA-15ULS, 65 GPH Automatic Condensate Removal Pump w/ Safety Switch
554425	Little Giant VCMA-20ULS, 80 GPH Automatic Condensate Removal Pump w/ Safety Switch
554415	Little Giant VCMA-15ULST, 65 GPH Automatic Condensate Removal Pump w/ Safety Switch & Tubing

Place Your Order Now!



[View Website for Pricing](#)
[Contact Us](#)



PexSupply.com

www.pexsupply.com • **888.757.4774**